



Sent via e-mail

July 28, 2020

Cynthia Sans
U.S. Environmental Protection Agency – Region 7
Water, Wetlands and Pesticides Division
11201 Renner Boulevard
Lenexa, KS 66219
sans.cynthia@epa.gov

RE: SSO Order of Compliance – Docket No. CWA-07-2015-0022
Compliance Actions – City of Leavenworth
Timeframe: January 1, 2020 - June 30, 2020

Ms. Sans:

Pursuant to Paragraphs 37 and 38 of the Order of Compliance on Consent, Docket No. CWA-07-2015-0022, the City of Leavenworth, Kansas is providing the following:

Paragraph 37. Attached is a listing of SSO “Transparency Report” notifications on the City of Leavenworth webpage at www.leavenworthks.org. These are related to SSO events that reached the Waters of the United States. Additional notifications of these events were made by the City Public Information Officer (PIO) via Social Media and on the City’s webpage at www.leavenworthks.org.

There were 2 SSO events that reached the Waters of the United States between January 1, 2020 and June 30, 2020. A summary of each event is below.

- 1. Around 10:54 a.m. on April 6, 2020, Water Pollution Control (WPC) received a report of sewage running down the alley behind 407 Olive and going into the storm drain. WPC personnel responded to the call and determined that a private property cleanout was leaking sewage that had been running down the alley into storm box #1388. When the WPC crew arrived, there was no sewage running down the alley. E-coli samples were taken. The WPC crew cleaned the area and put signs out notifying residents of the contaminated creek. The signs were removed when the E-Coli levels in the creek were within the acceptable limits set by KDHE. The City asked that all residents stay out of the creek water until the signs were removed. The affected areas were the 400, 300, and 200 blocks of Olive Street.*
- 2. On May 27, 2020, at 3:50 p.m., a concerned citizen called Water Pollution Control (WPC) to report a sewage leak from a private lateral at a sanitary sewer creek crossing behind 3000 Lakeview Court. WPC employees responded and an overflow was discovered at the stream that runs into 5-Mile Creek behind 3000 Lakeview Court.*

Further investigation revealed the City's main line was blocked with grease. The WPC crew cleared the blockage, which stopped the overflow at 6:00 p.m. The WPC crew put signs out notifying residents of the contaminated creek. The signs were removed when the E-Coli levels in the creek were within the acceptable limits set by KDHE. The City asked that all residents stay out of the creek water until the signs were removed. The City has designed a project to stabilize the sewer main and replace the private lateral connection at this location. The project is expected to be completed in late summer 2020.

A copy of the transparency reports related to these two (2) events is attached. The transparency reports are available for viewing on the City webpage at www.leavenworthks.org.

Paragraph 38. Describe actions taken by the City between January 1, 2020 and June 30, 2020 to comply with this order, and attach copies of all SSO reports submitted to KDHE.

(a.) The number of unauthorized discharges which occur within the City's POTW (Publicly-Owned Treatment Works) during the reporting period:

22 SSO events occurred during this period and reported to KDHE. A report showing each event and resolution of the event is included with this letter.

- 17 Private-Line Events. 1 event reached the Waters of the United States.
 - 0 events from contractor actions
 - 17 events were not related to contractor actions
- 4 City-Line Events. 1 reached the Waters of the United States.
 - 3 events were in City Lines
 - 1 event was at the wastewater treatment facility
 - 0 events were from contractor actions
 - 4 events were not related to contractor actions
- 1 Fort Leavenworth Event was reported to KDHE by American Water. It is unknown if any discharge from this event reached the Waters of the United States. A copy of the report is included. (The City of Leavenworth has no jurisdiction on Fort Leavenworth even though it is inside the City limits.)
 - 1 event was from contractor actions
 - 0 events were not related to contractor actions
- 0 USP Leavenworth (Bureau of Prisons) SSO Events were reported to KDHE. It is unknown if USP Leavenworth had overflows that were not reported. (The City of Leavenworth has no jurisdiction on USP Leavenworth even though it is inside the City limits.)

(b.) The specific measures taken by the City to correct and prevent recurrence of each unauthorized discharge which occurred within the City's POTW during the reporting period:

The City and residents have taken the actions as noted in the summary report related to Paragraph 38, section (a) above. In addition to those efforts, the following work occurred in the reporting period:

1. City continues to operate a CCTV crew. 4.45 miles were inspected during the reporting period for a total of 4.45 miles in 2020.
2. City crews inspected 251 manholes during the reporting period.
3. City continues to operate a cleaning and root elimination crew. 30.7 miles were cleaned during the reporting period for a total of 30.7 miles in 2020.
4. City inspected the results of root control operations performed in 2019. No areas were identified for warranty work. A root control project was completed in this reporting period with 14,855 feet of sewer line being treated.
5. City continues to operate a Grease Trap Inspection Program. Letters are sent to selected relevant businesses periodically and all known owners are contacted at least one time each year to request copies of their maintenance records. The City has identified 68 grease trap locations in both open and closed businesses. Physical inspections have been completed in 36 of the 68 grease trap installations during the reporting period. Three (3) new installations were completed and two (2) businesses closed during the reporting period. Currently there are no known businesses that are noncompliant.

The City continues to review and look at updates for the Grease Trap Inspection Program. Recommendations for the creation of fees and enforcement actions in the form of fines and/or the disconnection of water or sewer service have been proposed. The proposals were reviewed by the City Commission at the June 2, 2020 meeting for a review of the Stormwater Program. Revisions based on comments have been sent to the City Manager and City Attorney for a final review and final action by the commission. The final revisions are still under review.

6. Construction plans for the 2020 Sewer Inflow and Infiltration Project have been completed. The occurrence of the COVID-19 Pandemic has resulted in the 2020 I & I Project being placed on hold until 2021 with smaller more localized issues being the focus of repairs in 2020. Creek crossing inspections were completed in April and June of this year.
 - 0 contracts for creek crossing repairs were necessary.
 - 6 projects for manhole replacement or sewer line repairs totaling \$39,851.79 were awarded and completed during the reporting period.

The Thornton Street Replacement Project is currently under construction and will result in the following sewer line repairs/replacement at a cost of \$413,792.00
16 manholes replaced

639 LF. of private service line connections replaced to the property line (ROW)
(24 residences)
801 LF. of sewer mains replaced
4,295 LF. of CIPP sewer main lining

The 3000 Lakeview Sewer Project will replace a private service line connection, replace approximately 50' of sewer main, and stabilize 2 sanitary sewer main creek crossings at an estimated cost of \$100,000 to be constructed in 2020.

7. City efforts related to retention of employees have resulted in the following during the reporting period:
 - a. 0 employees separated from WPC during the reporting period. 2 new employees were hired, and 0 employees were promoted. The department was fully staffed with operator positions at the end of this reporting period. The Assistant Superintendent position is currently vacant.
 - b. Training and education opportunities are available for all operators to include in-house, formal training, and three California correspondence courses. All KDHE-certified operators are current in their requirements.
 - 12 employees attended in-house training for Slips, Trips and Falls
 - 2 employees attended HAZWOPER training
 - 2 employees attended NASCO training
 - 2 employees attended the Defensive Driving Course
 - 1 employee took the Truckers Against Trafficking Course
8. 2 cycles of creek-crossing inspections have occurred in the reporting period with 0 issues noted during this reporting period.

The Cody Park Sewer Crossing & Bank Stabilization Project is a result of the quarterly inspections. The project includes the replacement of an aerial sewer crossing support column and the stabilization of a creek bank where erosion is threatening the stability of a sewer main. The project was bid in June with construction to start in early August. Cost of the project is \$200,200.

9. The "Trouble Line" list continues to be investigated by City staff. These lines are subjected to additional routine cleaning or inspection on approximately a monthly basis due to previous situations. 20 lines remain on the "Trouble Line" list.
10. City has contracted with Service Line Warranties of America to provide an affordable repair option for all residential sewer lines (private lines). This optional program began in January 2017. Records indicate that 15 new customers registered for the sewer line warranty program during the reporting period of January 1, 2020 to June 30, 2020. The program currently has 319 residential structures under contract.
11. City Community Development Block Grant (CDBG) funds may be used to fund homeowner private sewer line repair or water line repair up to a maximum cap of \$5,000

depending on income qualifications. There were 0 CDBG sewer line repairs during the reporting period using grants for a total of \$0.00.

12. City Housing Trust Fund (HTF) resources may be used to assist homeowner private sewer line repair or water line repair up to a maximum cap of \$5,000 depending on income qualifications. There were 0 HTF sewer line repairs during the reporting period for a total of \$0.00.
13. In early 2018, the City of Leavenworth and City of Lansing signed a Memorandum of Understanding related to use of City of Lansing facilities for disposing of solids from the Vactor truck. The Memorandum of Understanding between the two cities remains in place. Staff used the Lansing facility to dispose of solids 1 time during this reporting period.
14. The City evaluates all SSOs related to contractor actions. There were 0 City-related SSOs involving contractor actions during the reporting period. 1 SSO related to contractor actions occurred at Fort Leavenworth during this reporting period. The need for situational awareness has been stressed to City inspectors and the contractors.

(c.) A copy of each unauthorized discharge report submitted to KDHE: Copies of 22 KDHE SSO reports are attached to this letter. This includes 1 event on Fort Leavenworth.

If you have any questions or need additional documentation, please don't hesitate to contact me at 913-684-0375 or by email at mmcdonald@firstcity.org.

Sincerely,



Michael G. McDonald, P.E.,
Director of Public Works

cc: Paul Kramer, City Manager
Tom Stiles, Director, Bureau of Water, KDHE (sent via U.S. mail)
Brittany A. Barrientos, Attorney

Attachments

- Screenshots of on-line Transparency Reports with details of the 2 events
- Spreadsheet with summary of 22 SSO events with dates and corrective actions
- KDHE SSO reports (22 events)
- Listing of 20 "Trouble Lines" currently receiving enhanced maintenance
- Summary email from Service Line Warranties of America Program

CITY OF LEAVENWORTH
2020 EPA REPORT - SUMMARY OF ATTACHMENTS
January 1 - June 30

Sanitary Sewer Overflows - **22**
Transparency Reports - **2**
Dukes Root Contract - **14,855 feet treated**
Sanitary Lines Repaired by WPC - **\$39,851.79**
Lines Cleaned - **30.7 miles**
Lines CCTV'd - **4.45 miles**
Maintenance Line List - **20**
Training/Promoted: **(See attached)**
Employees departed since January 1 - **0**
Employees hired since January 1 - **2**
Use of Inter-Local Agreement with Lansing - **1**



City of

LEAVENWORTH Kansas

Government

Departments



PUBLIC WORKS

TRASH AND RECYCLING	
ANNUAL STORMWATER REPORTS	+
INSPECTIONS & PERMITS DIVISION	+

Sanitary Sewer Overflow Transparency Reports 2020

Title

Attachments

Sanitary Sewer Overflow at 407 Olive St. on April 6 2020

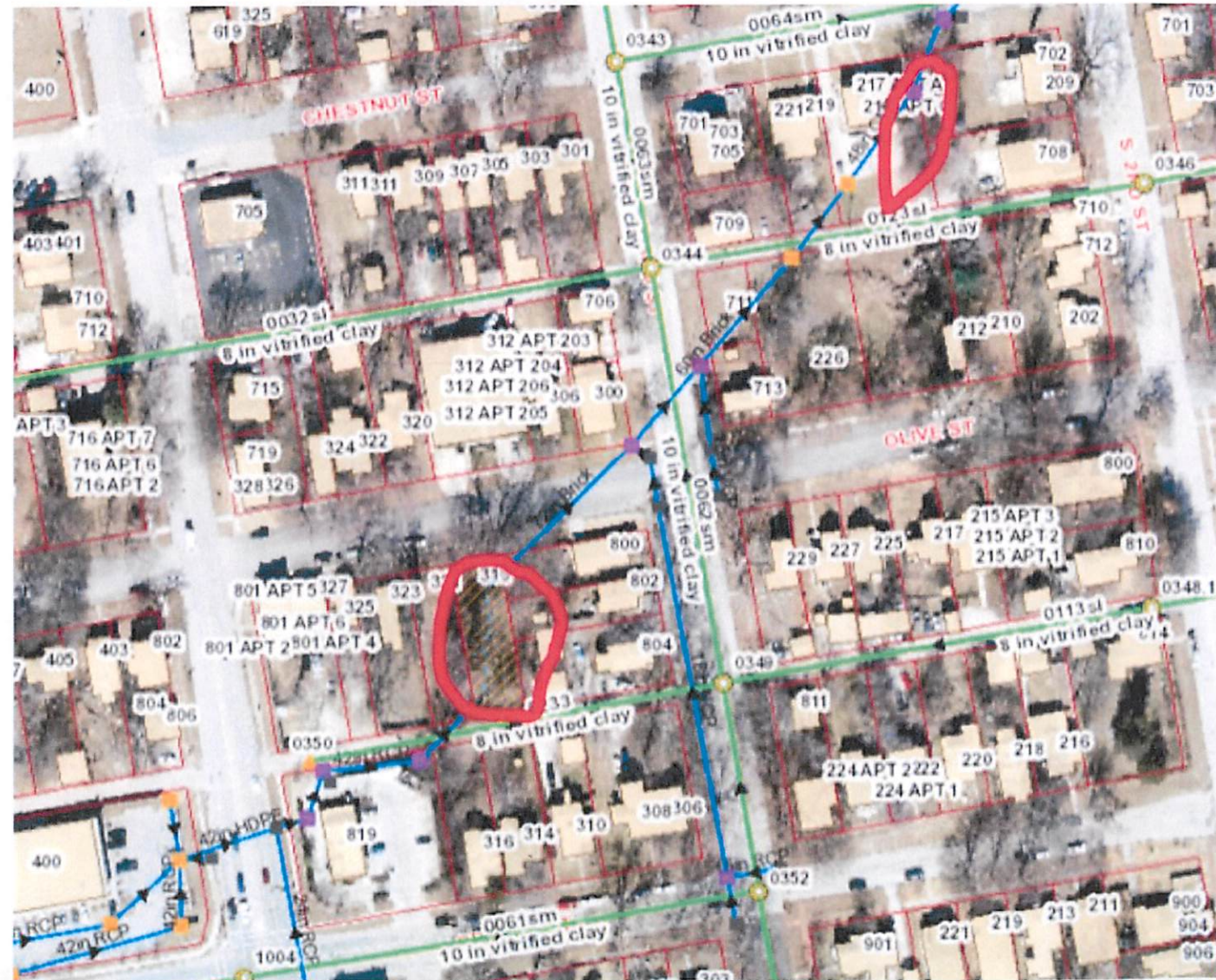
Sanitary Sewer Overflow for May 27, 2020

Sanitary Sewer Overflow for July 9, 2020

PUBLIC WORKS

TRASH AND RECYCLING	
ANNUAL STORMWATER REPORTS	+
INSPECTIONS & PERMITS DIVISION	+
STORMWATER PROJECTS	
STREET MAINTENANCE	+
BRUSH SITE	
WATER POLLUTION CONTROL	-
Sanitary Sewer Overflow Transparency Reports	
Sanitary Sewer Overflow Transparency Reports 2020	
Sanitary Sewer Overflow Transparency Reports 2017	
Sanitary Sewer Overflow Transparency Reports 2018	
Sanitary Sewer Overflow Transparency Reports 2019	
Sanitary Sewer Overflow at 407 Olive St. on April 11, 2020	
Sanitary Sewer Overflow for July 9, 2020	
Sanitary Sewer Overflow for June 23, 2019	
Sanitary Sewer Overflow report for Dec. 27, 2019	
CONSTRUCTION PROJECTS	
ENGINEERING	+

Sanitary Sewer Overflow at 407 Olive St. on April 6 2020



City of Leavenworth Transparency Report - 407 Olive April 6, 2020

Around 10:54 a.m. on April 6, 2020, Water Pollution Control (WPC) was informed of a sewage running down the alley and going into the storm drain. The WPC responded to the call and determined that a cleanout was leaking. This had been running down the alley and into storm box #1388. When City crews arrived, there was no sewage running down the alley. City crews cleaned the area and put creek-contaminated signs out while E-coli samples were taken. The signs will be removed when it is determined the E-Coli levels in the creek are within acceptable limits set by KDHE. The City would ask that residents stay away from the creek water until signs are removed. The affected areas will be from the 300 - 200 blocks of Olive Street.



PUBLIC WORKS

TRASH AND RECYCLING	
ANNUAL STORMWATER REPORTS	+
INSPECTIONS & PERMITS DIVISION	+
STORMWATER PROJECTS	
STREET MAINTENANCE	+
BRUSH SITE	
WATER POLLUTION CONTROL	+
CONSTRUCTION PROJECTS	
ENGINEERING	+

Sanitary Sewer Overflow for May 27, 2020

Transparency Report

POSTED May 28, 2020

On May 27, 2020 at 3:50 p.m. a concerned citizen called in to report a sewage leak from a lateral at a sanitary sewer creek crossing at 3000 Lakeview Ct.

Water Pollution Control employees responded and an overflow was discovered at a stream that runs into 5-Mile Creek behind 3000 Lakeview Ct.

Further investigation revealed the city's main line was blocked with grease. The crew cleared the blockage, which stopped the overflow at 6 p.m. Signs that read "creek contaminated" and "Notice: Stay out of the creek" were placed at the point of overflow. Citizens should stay out of the creek until the signs are removed. E-coli samples will be taken and a follow up inspection will be conducted.

Share/Save through Social Media



City of Leavenworth
Transparency Report - 3000 Lakeview Court
May 27, 2020

On May 27, 2020 at 3:50 p.m. a concerned citizen called in to report a sewage leak from a lateral at a sanitary sewer creek crossing at 3000 Lakeview Court.

Water Pollution Control employees responded and an overflow was discovered at a stream that runs into 5-Mile Creek behind 3000 Lakeview Court.

Further investigation revealed the City's main line was blocked with grease. The crew cleared the blockage, which stopped the overflow at 6:00 p.m. Signs that read "**Creek Contaminated**" and "**Notice: Stay Out of the Creek**" were placed at the point of overflow. Citizens should stay out of the creek until the signs are removed. E-coli samples will be taken and a follow-up inspection will be conducted.



City of Leavenworth - Water Treatment Plant - January 1, 2020 to June 30, 2020

SSO Summary

No.	Date	Address	Nature of Problem	SSO	Problem	Transparency Report	Cause	Solution
1	1/3/2020	910 Olive Street	Sewage coming from cleanout	Y	PLT	No	Private line blocked	Had plumber clear out line.
2	1/16/2020	400 S. 10th Street	CCTV found tile in line	Y	CLT	No	Tile in line	City crews cleaned line.
3	1/18/2020	309 Chestnut Street	House is backing up as well as neighbor's house	Y	PLT	No	Private line blocked	Had plumber clear out line.
4	1/24/2020	2020 S. 2nd Avenue	Sewer backed up	Y	PLT	No	Private line blocked	Plumber cleared roots from private line.
5	1/27/2020	1420 Kiowa Street	Water/sewage in basement	Y	PLT	No	Private line blocked	Plumber cleared roots from private line.
6	2/3/2020	1416 Kiowa Street	Cleanout leaking into ditch	Y	PLT	No	Private line blocked	Plumber cleared roots from private line.
7	2/7/2020	1402 Dakota Street	Drain backing up	Y	PLT	No	Private line blocked	Homeowner called plumber.
8	3/2/2020	1312 Broadway	Sewage running down street	Y	PLT	No	Private line blocked	Line had been cleared when City arrived.
9	3/9/2020	100 Highway Terrace	CORECIVIC called stating grinder pump backed up	Y	PLT	No	Their grinder pump stopped	They called company to repair.
10	3/17/2020	108 Olive Street	Possible sewage running down side of house	Y	PLT	No	Private line blocked	Homeowner called Roto-Rooter.
11	4/6/2020	407 Olive Street	Sewage is coming from cleanout and running down alley	Y	PLT	No	Private line blocked	Called plumber.
12	4/8/2020	801 S. 9th Street	Manhole is backing up	Y	PLT	Yes	Private line blocked	Plumber had cleared.
13	4/17/2020	3037 Shrine Park Road	Slow draining	Y	CLT	No	City line has slight block	City crews cleaned line.
14	4/22/1990	1400 Kingman Street	Sewer smell in back yard of neighbor's	Y	PLT	No	Private line blocked	Homeowner called Roto-Rooter.
15	4/24/2020	920-922 Brookside Street	Sewer backup	Y	PLT	No	Private line blocked	Property management cleared roots from lateral.
16	5/6/2020	Fort Leavenworth (Warehouse Rd)	Contractor hit force main	Y	FTLV	No	Private force main	Force main was repaired.
17	5/18/2020	518 Buttinger Street	Backing up in basement	Y	PLT	No	Private line blocked	Roots removed from lateral.
18	5/19/2020	2300 Hebbeln Drive	Backing up in basement	Y	PLT	No	Septic tank full	Septic tank cleaned.
19	5/26/2020	713 Pottawatomie Street	Drains running slow	Y	PLT	No	Private line blocked	Plumber cleaned line.
20	5/27/2020	3000 Lakeview Court	Sewage leaking around creek crossing	Y	CLT	Yes	City line had blockage	City crews cleaned line.
21	6/7/2020	1800 S. 2nd Street	Power was lost to PLC in settled sewage building	Y	Plant	No	Power lost	Reset building.
22	6/18/2020	1013 N. 10th Street	Sewage is backing up in basement	Y	PLT	No	Private line blocked	Homeowner was to take care of.

1st Half of 2020	
SSO	22
City Line Overflows	3
Private Line Overflows	17
Plant	1
Lift Station	0
Ft. Leavenworth	1

CLT - City Line Trouble
PLT - Private Line Trouble

SANITARY SEWER OVERFLOWS

JANUARY 2020

**KANSAS DEPARTMENT OF HEALTH AND ENVIRONMENT
WASTEWATER INCIDENT REPORT FORM**

Definitions are available at <http://www.kdheks.gov/water/tech.html>

Collection System Bypass In-Plant Diversion Upset In-Plant Flow Through Spill

1. FACILITY NAME: Leavenworth, City of Kansas Permit # M-MO12-IO01
2. Within 24 hours of discovery, notify the KDHE Central Office (email – chris.seeds@ks.gov), (fax 785.296.0086), (telephone 785.296.5517) or your local KDHE district office. Written notification is required within 5 days of discovery. If the incident is not corrected within 5 days, send a written notification to KDHE indicating the status. This form is to be sent to KDHE when the incident ends.

KDHE Person Contacted: Chris Seeds Date: 1/6/2020 Time: 9:14 am

3. Date Incident Discovered: 1/3/2020 Time: 1:16 pm
4. Date Incident Ended: 1/3/2020 Time: 3:07 pm
5. Total estimated gallons bypassed, spilled, or routed through failed equipment for all locations on this form: 10 Gallons
6. If rainfall induced event, approximate inches of rainfall n/a
If multiple locations listed below due to rain event, check here

7. Incident Location: (check all that apply)
- | | |
|--|--|
| <input type="checkbox"/> Plant | <input type="checkbox"/> City Collection Line (Line Break / Joint) |
| <input type="checkbox"/> Lift/Pump Station | <input checked="" type="checkbox"/> Private Sewer Line |
| <input type="checkbox"/> Peak Flow Basin | <input type="checkbox"/> Basement |
| <input type="checkbox"/> Manhole(s) | <input type="checkbox"/> Other (specify below) |

Identify **All** Incident Locations by Name, Street Address or Manhole Number as appropriate.
910 Olive St. out of cleanout on corner of 9th and Olive st.

8. Cause of Incident:
- | | |
|---|--|
| <input type="checkbox"/> Intentional Bypass for Repair/Construction | <input type="checkbox"/> Equipment Failure |
| <input type="checkbox"/> Excessive Rainfall, Snow Melt | <input type="checkbox"/> Control System Failure |
| <input type="checkbox"/> Unplanned Construction Related Break | <input type="checkbox"/> Power Related Failure |
| <input type="checkbox"/> City Line Break (Not Construction Related) | <input type="checkbox"/> Operations Related Failure |
| <input type="checkbox"/> City Line Blockage | <input type="checkbox"/> Maintenance Related Failure |
| <input type="checkbox"/> Private Line Break | <input type="checkbox"/> Vandalism |
| <input checked="" type="checkbox"/> Private Line Blockage | <input type="checkbox"/> Other |
| <input type="checkbox"/> Lagoon High Level | |

Additional explanation of reason for Incident: (use additional page if necessary)
Private line blocked and leaking out of cleanout.

9. Corrective Action, if any: (use additional page if necessary)
City crew dyed and found house attached to lateral. Contacted Homeowner and they had Walt's Plumbing out and clear their line. City crews cleaned area and put lime down in yard.

Name: Tim Guardado Date: 1/6/2020
Title: Superintendent Phone: 913-682-1090

When Completed, E-mail to: chris.seeds@ks.gov
Kansas Department of Health & Environment – Attn: Chris Seeds
Or Mail to: 1000 SW Jackson St., Suite 420, Topeka, KS 66612-1367
Fax 785.296.0086

**KANSAS DEPARTMENT OF HEALTH AND ENVIRONMENT
WASTEWATER INCIDENT REPORT FORM**

Definitions are available at <http://www.kdheks.gov/water/tech.html>

Collection System Bypass In-Plant Diversion Upset In-Plant Flow Through Spill

1. FACILITY NAME: Leavenworth, City of Kansas Permit # M-MO12-IO01
2. Within 24 hours of discovery, notify the KDHE Central Office (email – chris.seeds@ks.gov), (fax 785.296.0086), (telephone 785.296.5517) or your local KDHE district office. Written notification is required within 5 days of discovery. If the incident is not corrected within 5 days, send a written notification to KDHE indicating the status. This form is to be sent to KDHE when the incident ends.

KDHE Person Contacted: Chris Seeds Date: 1/16/2020 Time: 3:37 pm

3. Date Incident Discovered: 1/16/2020 Time: 9:45 am
4. Date Incident Ended: 1/16/2020 Time: 12:20 pm
5. Total estimated gallons bypassed, spilled, or routed through failed equipment for all locations on this form: 15 Gallons
6. If rainfall induced event, approximate inches of rainfall n/a
If multiple locations listed below due to rain event, check here

7. Incident Location: (check all that apply)
- | | |
|--|--|
| <input type="checkbox"/> Plant | <input type="checkbox"/> City Collection Line (Line Break / Joint) |
| <input type="checkbox"/> Lift/Pump Station | <input type="checkbox"/> Private Sewer Line |
| <input type="checkbox"/> Peak Flow Basin | <input type="checkbox"/> Basement |
| <input checked="" type="checkbox"/> Manhole(s) | <input type="checkbox"/> Other (specify below) |

Identify **All** Incident Locations by Name, Street Address or Manhole Number as appropriate.
400 S 10th St. Leavenworth Seeping through asphalt of covered manhole 0281.

8. Cause of Incident:
- | | |
|--|--|
| <input type="checkbox"/> Intentional Bypass for Repair/Construction | <input type="checkbox"/> Equipment Failure |
| <input type="checkbox"/> Excessive Rainfall, Snow Melt | <input type="checkbox"/> Control System Failure |
| <input type="checkbox"/> Unplanned Construction Related Break | <input type="checkbox"/> Power Related Failure |
| <input checked="" type="checkbox"/> City Line Break (Not Construction Related) | <input type="checkbox"/> Operations Related Failure |
| <input type="checkbox"/> City Line Blockage | <input type="checkbox"/> Maintenance Related Failure |
| <input type="checkbox"/> Private Line Break | <input type="checkbox"/> Vandalism |
| <input type="checkbox"/> Private Line Blockage | <input type="checkbox"/> Other |
| <input type="checkbox"/> Lagoon High Level | |

Additional explanation of reason for Incident: (use additional page if necessary)
Tile or Brick wedge in VCP city main causing obstruction.

9. Corrective Action, if any: (use additional page if necessary)
City Crews used Jet truck to remove tile/brick out of line removing obstruction.

Name: Tim Guardado Date: 1/17/2020
Title: Superintendent Phone: 913-682-1090

When Completed, E-mail to: Chris.seeds@ks.gov
Kansas Department of Health & Environment – Attn: Chris Seeds
Or Mail to: 1000 SW Jackson St., Suite 420, Topeka, KS 66612-1367
Fax 785.296.0086

**KANSAS DEPARTMENT OF HEALTH AND ENVIRONMENT
WASTEWATER INCIDENT REPORT FORM**

Definitions are available at <http://www.kdheks.gov/water/tech.html>

Collection System Bypass In-Plant Diversion Upset In-Plant Flow Through Spill

1. FACILITY NAME: Leavenworth, City of Kansas Permit # M-MO12-IO01
2. Within 24 hours of discovery, notify the KDHE Central Office (email – chris.seeds@ks.gov), (fax 785.296.0086), (telephone 785.296.5517) or your local KDHE district office. Written notification is required within 5 days of discovery. If the incident is not corrected within 5 days, send a written notification to KDHE indicating the status. This form is to be sent to KDHE when the incident ends.

KDHE Person Contacted: Chris Seeds Date: 1/18/2020 Time: 1:17 pm

3. Date Incident Discovered: 1/18/2020 Time: 11:40 am
4. Date Incident Ended: 1/18/2020 Time: 12:45 pm
5. Total estimated gallons bypassed, spilled, or routed through failed equipment for all locations on this form: 2 Gallons
6. If rainfall induced event, approximate inches of rainfall n/a
If multiple locations listed below due to rain event, check here

7. Incident Location: (check all that apply)
- | | |
|--|--|
| <input type="checkbox"/> Plant | <input type="checkbox"/> City Collection Line (Line Break / Joint) |
| <input type="checkbox"/> Lift/Pump Station | <input type="checkbox"/> Private Sewer Line |
| <input type="checkbox"/> Peak Flow Basin | <input checked="" type="checkbox"/> Basement |
| <input type="checkbox"/> Manhole(s) | <input type="checkbox"/> Other (specify below) |

Identify **All** Incident Locations by Name, Street Address or Manhole Number as appropriate.
309 Chestnut St. Plumber called and said backing up in basement just around drain.

8. Cause of Incident:
- | | |
|---|--|
| <input type="checkbox"/> Intentional Bypass for Repair/Construction | <input type="checkbox"/> Equipment Failure |
| <input type="checkbox"/> Excessive Rainfall, Snow Melt | <input type="checkbox"/> Control System Failure |
| <input type="checkbox"/> Unplanned Construction Related Break | <input type="checkbox"/> Power Related Failure |
| <input type="checkbox"/> City Line Break (Not Construction Related) | <input type="checkbox"/> Operations Related Failure |
| <input type="checkbox"/> City Line Blockage | <input type="checkbox"/> Maintenance Related Failure |
| <input type="checkbox"/> Private Line Break | <input type="checkbox"/> Vandalism |
| <input checked="" type="checkbox"/> Private Line Blockage | <input type="checkbox"/> Other |
| <input type="checkbox"/> Lagoon High Level | |

Additional explanation of reason for Incident: (use additional page if necessary)
Private lateral blocked causing backup in house.

9. Corrective Action, if any: (use additional page if necessary)
Plumber cleared blockage in private line. Plumber called city because a neighbor in the area said their toilet was running slow.

Name: Tim Guardado Date: 1/24/2020
Title: Superintendent Phone: 913-682-1090

When Completed, E-mail to: cseeds@kdheks.gov
Kansas Department of Health & Environment – Attn: Chris Seeds
Or Mail to: 1000 SW Jackson St., Suite 420, Topeka, KS 66612-1367
Fax 785.296.0086

**KANSAS DEPARTMENT OF HEALTH AND ENVIRONMENT
WASTEWATER INCIDENT REPORT FORM**

Definitions are available at <http://www.kdheks.gov/water/tech.html>

Collection System Bypass In-Plant Diversion Upset In-Plant Flow Through Spill

1. FACILITY NAME: Leavenworth, City of Kansas Permit # M-MO12-IO01
2. Within 24 hours of discovery, notify the KDHE Central Office (email – chris.seeds@ks.gov), (fax 785.296.0086), (telephone 785.296.5517) or your local KDHE district office. Written notification is required within 5 days of discovery. If the incident is not corrected within 5 days, send a written notification to KDHE indicating the status. This form is to be sent to KDHE when the incident ends.

KDHE Person Contacted: Chris Seeds Date: 1.24.2020 Time: 2:43 pm

3. Date Incident Discovered: 1.24.2020 Time: 1:45 pm

4. Date Incident Ended: 1.28.2020 Time: 10:00 am

5. Total estimated gallons bypassed, spilled, or routed through failed equipment for all locations on this form: 10 Gallons

6. If rainfall induced event, approximate inches of rainfall n/a

If multiple locations listed below due to rain event, check here

7. Incident Location: (check all that apply)

- | | |
|--|--|
| <input type="checkbox"/> Plant | <input type="checkbox"/> City Collection Line (Line Break / Joint) |
| <input type="checkbox"/> Lift/Pump Station | <input type="checkbox"/> Private Sewer Line |
| <input type="checkbox"/> Peak Flow Basin | <input checked="" type="checkbox"/> Basement |
| <input type="checkbox"/> Manhole(s) | <input type="checkbox"/> Other (specify below) |

Identify **All** Incident Locations by Name, Street Address or Manhole Number as appropriate.

2020 S 2nd Ave sewage confined to the basement around floor drain.

8. Cause of Incident:

- | | |
|---|--|
| <input type="checkbox"/> Intentional Bypass for Repair/Construction | <input type="checkbox"/> Equipment Failure |
| <input type="checkbox"/> Excessive Rainfall, Snow Melt | <input type="checkbox"/> Control System Failure |
| <input type="checkbox"/> Unplanned Construction Related Break | <input type="checkbox"/> Power Related Failure |
| <input type="checkbox"/> City Line Break (Not Construction Related) | <input type="checkbox"/> Operations Related Failure |
| <input type="checkbox"/> City Line Blockage | <input type="checkbox"/> Maintenance Related Failure |
| <input type="checkbox"/> Private Line Break | <input type="checkbox"/> Vandalism |
| <input checked="" type="checkbox"/> Private Line Blockage | <input type="checkbox"/> Other |
| <input type="checkbox"/> Lagoon High Level | |

Additional explanation of reason for Incident: (use additional page if necessary)

Private lateral was blocked and when they ran washing machine it came up through floor drain.

9. Corrective Action, if any: (use additional page if necessary)

Homeowner informed city that plumber came out and pulled roots from their Private lateral.

Name: Tim Guardado Date: 1.28.2020

Title: Superintendent Phone: 913-682-1090

When Completed, E-mail to: chris.seeds@ks.gov

Or Mail to: Kansas Department of Health & Environment – Attn: Chris Seeds

1000 SW Jackson St., Suite 420, Topeka, KS 66612-1367

Fax 785.296.0086

**KANSAS DEPARTMENT OF HEALTH AND ENVIRONMENT
WASTEWATER INCIDENT REPORT FORM**

Definitions are available at <http://www.kdheks.gov/water/tech.html>

Collection System Bypass In-Plant Diversion Upset In-Plant Flow Through Spill

1. FACILITY NAME: Leavenworth, City of Kansas Permit # M-MO12-IO01
2. Within 24 hours of discovery, notify the KDHE Central Office (email – chris.seeds@ks.gov), (fax 785.296.0086), (telephone 785.296.5517) or your local KDHE district office. Written notification is required within 5 days of discovery. If the incident is not corrected within 5 days, send a written notification to KDHE indicating the status. This form is to be sent to KDHE when the incident ends.

KDHE Person Contacted: Chris Seeds Date: 1.28.2020 Time: 9:28 am

3. Date Incident Discovered: 1.27.2020 Time: 5:00 pm
4. Date Incident Ended: 1.29.2020 Time: 3:00 pm
5. Total estimated gallons bypassed, spilled, or routed through failed equipment for all locations on this form: 20 Gallons
6. If rainfall induced event, approximate inches of rainfall n/a
 If multiple locations listed below due to rain event, check here

7. Incident Location: (check all that apply)
- | | |
|--|--|
| <input type="checkbox"/> Plant | <input type="checkbox"/> City Collection Line (Line Break / Joint) |
| <input type="checkbox"/> Lift/Pump Station | <input type="checkbox"/> Private Sewer Line |
| <input type="checkbox"/> Peak Flow Basin | <input checked="" type="checkbox"/> Basement |
| <input type="checkbox"/> Manhole(s) | <input type="checkbox"/> Other (specify below) |

Identify **All** Incident Locations by Name, Street Address or Manhole Number as appropriate.
1420 Kiowa St in their basement

8. Cause of Incident:
- | | |
|---|--|
| <input type="checkbox"/> Intentional Bypass for Repair/Construction | <input type="checkbox"/> Equipment Failure |
| <input type="checkbox"/> Excessive Rainfall, Snow Melt | <input type="checkbox"/> Control System Failure |
| <input type="checkbox"/> Unplanned Construction Related Break | <input type="checkbox"/> Power Related Failure |
| <input type="checkbox"/> City Line Break (Not Construction Related) | <input type="checkbox"/> Operations Related Failure |
| <input type="checkbox"/> City Line Blockage | <input type="checkbox"/> Maintenance Related Failure |
| <input type="checkbox"/> Private Line Break | <input type="checkbox"/> Vandalism |
| <input checked="" type="checkbox"/> Private Line Blockage | <input type="checkbox"/> Other |
| <input type="checkbox"/> Lagoon High Level | |

Additional explanation of reason for Incident: (use additional page if necessary)
Private line blocked. City checked city Mains and found no Issues. Homeowner advised to call plumber Back.

9. Corrective Action, if any: (use additional page if necessary)
Homeowner called plumber (Kevin Lis). He cleared roots from the private lateral.

Name: Tim Guardado Date: 1.30.2020
Title: Superintendent Phone: 913-682-1090

When Completed, E-mail to: chris.seeds@ks.gov
Kansas Department of Health & Environment – Attn: Chris Seeds
Or Mail to: 1000 SW Jackson St., Suite 420, Topeka, KS 66612-1367
Fax 785.296.0086



SANITARY SEWER OVERFLOWS

FEBRUARY 2020



**KANSAS DEPARTMENT OF HEALTH AND ENVIRONMENT
WASTEWATER INCIDENT REPORT FORM**

Definitions are available at <http://www.kdheks.gov/water/tech.html>

Collection System Bypass In-Plant Diversion Upset In-Plant Flow Through Spill

1. FACILITY NAME: Leavenworth, City of Kansas Permit # M-MO12-IO01
2. Within 24 hours of discovery, notify the KDHE Central Office (email – chris.seeds@ks.gov), (fax 785.296.0086), (telephone 785.296.5517) or your local KDHE district office. Written notification is required within 5 days of discovery. If the incident is not corrected within 5 days, send a written notification to KDHE indicating the status. This form is to be sent to KDHE when the incident ends.

KDHE Person Contacted: Chris Seeds Date: 2/4/2020 Time: 8:06 am

3. Date Incident Discovered: 2/3/2020 Time: 2:02 pm
4. Date Incident Ended: 2/3/2020 Time: 5:00 pm
5. Total estimated gallons bypassed, spilled, or routed through failed equipment for all locations on this form: 30 Gallons
6. If rainfall induced event, approximate inches of rainfall n/a
 If multiple locations listed below due to rain event, check here

7. Incident Location: (check all that apply)
- | | |
|--|--|
| <input type="checkbox"/> Plant | <input type="checkbox"/> City Collection Line (Line Break / Joint) |
| <input type="checkbox"/> Lift/Pump Station | <input checked="" type="checkbox"/> Private Sewer Line |
| <input type="checkbox"/> Peak Flow Basin | <input type="checkbox"/> Basement |
| <input type="checkbox"/> Manhole(s) | <input type="checkbox"/> Other (specify below) |

Identify **All** Incident Locations by Name, Street Address or Manhole Number as appropriate.
1416 Kiowa St. Sewage was coming out of a cleanout in front of address.

8. Cause of Incident:
- | | |
|---|--|
| <input type="checkbox"/> Intentional Bypass for Repair/Construction | <input type="checkbox"/> Equipment Failure |
| <input type="checkbox"/> Excessive Rainfall, Snow Melt | <input type="checkbox"/> Control System Failure |
| <input type="checkbox"/> Unplanned Construction Related Break | <input type="checkbox"/> Power Related Failure |
| <input type="checkbox"/> City Line Break (Not Construction Related) | <input type="checkbox"/> Operations Related Failure |
| <input type="checkbox"/> City Line Blockage | <input type="checkbox"/> Maintenance Related Failure |
| <input type="checkbox"/> Private Line Break | <input type="checkbox"/> Vandalism |
| <input checked="" type="checkbox"/> Private Line Blockage | <input type="checkbox"/> Other |
| <input type="checkbox"/> Lagoon High Level | |

Additional explanation of reason for Incident: (use additional page if necessary)
Private lateral was blocked and leaking out of cleanout.

9. Corrective Action, if any: (use additional page if necessary)
Plumber(Kevin Lis) pulled roots from private lateral. Also asked Kevin to put a screw on cap on lateral To help prevent leaking from cleanout.

Name: Tim Guardado Date: 2/5/2020
Title: Superintendent Phone: 913-682-1090

When Completed, E-mail to: chris.seeds@ks.gov
Kansas Department of Health & Environment – Attn: Chris Seeds
Or Mail to: 1000 SW Jackson St., Suite 420, Topeka , KS 66612-1367
Fax 785.296.0086

KANSAS DEPARTMENT OF HEALTH AND ENVIRONMENT
WASTEWATER INCIDENT REPORT FORM

5.5.1

Definitions are available at <http://www.kdheks.gov/water/tech.html>

Collection System Bypass In-Plant Diversion Upset In-Plant Flow Through Spill

1. FACILITY NAME: Leavenworth, City of Kansas Permit # M-MO12-IO01
2. Within 24 hours of discovery, notify the KDHE Central Office (email – chris.seeds@ks.gov), (fax 785.296.0086), (telephone 785.296.5517) or your local KDHE district office. Written notification is required within 5 days of discovery. If the incident is not corrected within 5 days, send a written notification to KDHE indicating the status. This form is to be sent to KDHE when the incident ends.

KDHE Person Contacted: Chris Seeds Date: 2.7.2020 Time: 3:38 pm

3. Date Incident Discovered: 2.7.2020 Time: 1:00 pm
4. Date Incident Ended: 2.24.2020 Time: 2:26 pm
5. Total estimated gallons bypassed, spilled, or routed through failed equipment for all locations on this form: 20 Gallons
6. If rainfall induced event, approximate inches of rainfall n/a

If multiple locations listed below due to rain event, check here

7. Incident Location: (check all that apply)
- | | |
|--|--|
| <input type="checkbox"/> Plant | <input type="checkbox"/> City Collection Line (Line Break / Joint) |
| <input type="checkbox"/> Lift/Pump Station | <input type="checkbox"/> Private Sewer Line |
| <input type="checkbox"/> Peak Flow Basin | <input checked="" type="checkbox"/> Basement |
| <input type="checkbox"/> Manhole(s) | <input type="checkbox"/> Other (specify below) |

Identify **All** Incident Locations by Name, Street Address or Manhole Number as appropriate.

1402 Kiewa St sewage contained to garage.

Dakota - To 2.17.20

8. Cause of Incident:
- | | |
|---|--|
| <input type="checkbox"/> Intentional Bypass for Repair/Construction | <input type="checkbox"/> Equipment Failure |
| <input type="checkbox"/> Excessive Rainfall, Snow Melt | <input type="checkbox"/> Control System Failure |
| <input type="checkbox"/> Unplanned Construction Related Break | <input type="checkbox"/> Power Related Failure |
| <input type="checkbox"/> City Line Break (Not Construction Related) | <input type="checkbox"/> Operations Related Failure |
| <input type="checkbox"/> City Line Blockage | <input type="checkbox"/> Maintenance Related Failure |
| <input type="checkbox"/> Private Line Break | <input type="checkbox"/> Vandalism |
| <input checked="" type="checkbox"/> Private Line Blockage | <input type="checkbox"/> Other |
| <input type="checkbox"/> Lagoon High Level | |

Additional explanation of reason for Incident: (use additional page if necessary)
private line blockage

9. Corrective Action, if any: (use additional page if necessary)
City crews checked city main. Main had no problems. Homeowner was advised she would need to get A plumber. City CCTV'd line to check homeowners lateral and found no problems.

Name: Tim Guardado Date: 2.24.2020
Title: Superintendent Phone: 913-682-1090

When Completed, E-mail to: chris.seeds@ks.gov
Kansas Department of Health & Environment – Attn: Chris Seeds
Or Mail to: 1000 SW Jackson St., Suite 420, Topeka, KS 66612-1367
Fax 785.296.0086

SANITARY SEWER OVERFLOWS

MARCH 2020

**KANSAS DEPARTMENT OF HEALTH AND ENVIRONMENT
WASTEWATER INCIDENT REPORT FORM**

Definitions are available at <http://www.kdheks.gov/water/tech.html>

Collection System Bypass In-Plant Diversion Upset In-Plant Flow Through Spill

1. FACILITY NAME: Leavenworth, City of Kansas Permit # M-MO12-IO01
 2. Within 24 hours of discovery, notify the KDHE Central Office (email – chris.seeds@ks.gov), (fax 785.296.0086), (telephone 785.296.5517) or your local KDHE district office. Written notification is required within 5 days of discovery. If the incident is not corrected within 5 days, send a written notification to KDHE indicating the status. This form is to be sent to KDHE when the incident ends.

KDHE Person Contacted: Chris Seeds Date: 3.2.2020 Time: 3:00 pm

3. Date Incident Discovered: 3.2.2020 Time: 12:00 pm

4. Date Incident Ended: 3.2.2020 Time: 1:00 pm

5. Total estimated gallons bypassed, spilled, or routed through failed equipment for all locations on this form: 10 Gallons

6. If rainfall induced event, approximate inches of rainfall n/a

If multiple locations listed below due to rain event, check here

7. Incident Location: (check all that apply)

- | | |
|--|--|
| <input type="checkbox"/> Plant | <input type="checkbox"/> City Collection Line (Line Break / Joint) |
| <input type="checkbox"/> Lift/Pump Station | <input checked="" type="checkbox"/> Private Sewer Line |
| <input type="checkbox"/> Peak Flow Basin | <input type="checkbox"/> Basement |
| <input type="checkbox"/> Manhole(s) | <input type="checkbox"/> Other (specify below) |

Identify **All** Incident Locations by Name, Street Address or Manhole Number as appropriate.

The house the lateral belongs to is 1312 S Broadway. The cleanout is in the yard of 1327 Columbia Ave. which is who called this in.

8. Cause of Incident:

- | | |
|---|--|
| <input type="checkbox"/> Intentional Bypass for Repair/Construction | <input type="checkbox"/> Equipment Failure |
| <input type="checkbox"/> Excessive Rainfall, Snow Melt | <input type="checkbox"/> Control System Failure |
| <input type="checkbox"/> Unplanned Construction Related Break | <input type="checkbox"/> Power Related Failure |
| <input type="checkbox"/> City Line Break (Not Construction Related) | <input type="checkbox"/> Operations Related Failure |
| <input type="checkbox"/> City Line Blockage | <input type="checkbox"/> Maintenance Related Failure |
| <input type="checkbox"/> Private Line Break | <input type="checkbox"/> Vandalism |
| <input checked="" type="checkbox"/> Private Line Blockage | <input type="checkbox"/> Other |
| <input type="checkbox"/> Lagoon High Level | |

Additional explanation of reason for Incident: (use additional page if necessary)

Private line was blocked but had already been cleared before city crews arrived. Caller said sewage discharged out of cleanout 2.28.2020.

9. Corrective Action, if any: (use additional page if necessary)

When crews arrived lateral was already cleared and no longer backed up. City crews ran main sanitary Line and cleaned up what was around cleanout.

Name: Tim Guardado Date: 3.2.2020

Title: Superintendent Phone: 913-682-1090

When Completed, E-mail to: chris.seeds@ks.gov

Or Mail to: Kansas Department of Health & Environment – Attn: Chris Seeds
 1000 SW Jackson St., Suite 420, Topeka, KS 66612-1367
 Fax 785.296.0086

**KANSAS DEPARTMENT OF HEALTH AND ENVIRONMENT
WASTEWATER INCIDENT REPORT FORM**

Definitions are available at <http://www.kdheks.gov/water/tech.html>

Collection System Bypass In-Plant Diversion Upset In-Plant Flow Through Spill

1. FACILITY NAME: Leavenworth, City of Kansas Permit # M-MO12-IO01
2. Within 24 hours of discovery, notify the KDHE Central Office (email – chris.seeds@ks.gov), (fax 785.296.0086), (telephone 785.296.5517) or your local KDHE district office. Written notification is required within 5 days of discovery. If the incident is not corrected within 5 days, send a written notification to KDHE indicating the status. This form is to be sent to KDHE when the incident ends.

KDHE Person Contacted: Chris Seeds Date: 3/9/2020 Time: 3:52 pm

3. Date Incident Discovered: 3/9/2020 Time: 3:20 pm

4. Date Incident Ended: 3/9/2020 Time: 3:40 pm

5. Total estimated gallons bypassed, spilled, or routed through failed equipment for all locations on this form: 75 Gallons

6. If rainfall induced event, approximate inches of rainfall n/a

If multiple locations listed below due to rain event, check here

7. Incident Location: (check all that apply)

- | | |
|--|--|
| <input type="checkbox"/> Plant | <input type="checkbox"/> City Collection Line (Line Break / Joint) |
| <input type="checkbox"/> Lift/Pump Station | <input checked="" type="checkbox"/> Private Sewer Line |
| <input type="checkbox"/> Peak Flow Basin | <input type="checkbox"/> Basement |
| <input type="checkbox"/> Manhole(s) | <input type="checkbox"/> Other (specify below) |

Identify **All** Incident Locations by Name, Street Address or Manhole Number as appropriate.

100 Highway Terrace, pump station

8. Cause of Incident:

- | | |
|---|---|
| <input type="checkbox"/> Intentional Bypass for Repair/Construction | <input checked="" type="checkbox"/> Equipment Failure |
| <input type="checkbox"/> Excessive Rainfall, Snow Melt | <input type="checkbox"/> Control System Failure |
| <input type="checkbox"/> Unplanned Construction Related Break | <input type="checkbox"/> Power Related Failure |
| <input type="checkbox"/> City Line Break (Not Construction Related) | <input type="checkbox"/> Operations Related Failure |
| <input type="checkbox"/> City Line Blockage | <input type="checkbox"/> Maintenance Related Failure |
| <input type="checkbox"/> Private Line Break | <input type="checkbox"/> Vandalism |
| <input type="checkbox"/> Private Line Blockage | <input type="checkbox"/> Other |
| <input type="checkbox"/> Lagoon High Level | |

Additional explanation of reason for Incident: (use additional page if necessary)

CoreCivic has a grinder pump that stopped working. They are pumping around the grinder pump.

9. Corrective Action, if any: (use additional page if necessary)

They have called in a company to repair their grinder pump.

Name: Tim Guardado Date: 3/9/2020

Title: Superintendent Phone: 913-682-1090

When Completed, E-mail to: chris.seeds@ks.gov

Kansas Department of Health & Environment – Attn: Chris Seeds

Or Mail to: 1000 SW Jackson St., Suite 420, Topeka, KS 66612-1367

Fax 785.296.0086

**KANSAS DEPARTMENT OF HEALTH AND ENVIRONMENT
WASTEWATER INCIDENT REPORT FORM**

Definitions are available at <http://www.kdheks.gov/water/tech.html>

Collection System Bypass In-Plant Diversion Upset In-Plant Flow Through Spill

1. FACILITY NAME: Leavenworth, City of Kansas Permit # M-MO12-IO01
2. Within 24 hours of discovery, notify the KDHE Central Office (email – chris.seeds@ks.gov), (fax 785.296.0086), (telephone 785.296.5517) or your local KDHE district office. Written notification is required within 5 days of discovery. If the incident is not corrected within 5 days, send a written notification to KDHE indicating the status. This form is to be sent to KDHE when the incident ends.

KDHE Person Contacted: Chris Seeds Date: 3/19/2020 Time: 11:35 am

3. Date Incident Discovered: 3/17/2020 Time: 9:11 am
4. Date Incident Ended: 3/19/2020 Time: 11:02 am
5. Total estimated gallons bypassed, spilled, or routed through failed equipment for all locations on this form: 50 Gallons
6. If rainfall induced event, approximate inches of rainfall n/a

If multiple locations listed below due to rain event, check here

7. Incident Location: (check all that apply)

<input type="checkbox"/> Plant	<input type="checkbox"/> City Collection Line (Line Break / Joint)
<input type="checkbox"/> Lift/Pump Station	<input checked="" type="checkbox"/> Private Sewer Line
<input type="checkbox"/> Peak Flow Basin	<input type="checkbox"/> Basement
<input type="checkbox"/> Manhole(s)	<input type="checkbox"/> Other (specify below)

Identify **All** Incident Locations by Name, Street Address or Manhole Number as appropriate.

102 Olive St. out of cleanout running into neighbor's yard. Caller is neighbor at 108 Olive St.

8. Cause of Incident:

<input type="checkbox"/> Intentional Bypass for Repair/Construction	<input type="checkbox"/> Equipment Failure
<input type="checkbox"/> Excessive Rainfall, Snow Melt	<input type="checkbox"/> Control System Failure
<input type="checkbox"/> Unplanned Construction Related Break	<input type="checkbox"/> Power Related Failure
<input type="checkbox"/> City Line Break (Not Construction Related)	<input type="checkbox"/> Operations Related Failure
<input type="checkbox"/> City Line Blockage	<input type="checkbox"/> Maintenance Related Failure
<input type="checkbox"/> Private Line Break	<input type="checkbox"/> Vandalism
<input checked="" type="checkbox"/> Private Line Blockage	<input type="checkbox"/> Other
<input type="checkbox"/> Lagoon High Level	

Additional explanation of reason for Incident: (use additional page if necessary)

Private line was blocked. City checked city main it was clear. City crews put absorbent socks out to contain back up.

9. Corrective Action, if any: (use additional page if necessary)

Homewoner was advised to call a plumber and not to use any water. Roto-Rooter was called and Cleared line.

Name: Tim Guardado Date: 3/19/2020
Title: Superintendent Phone: 913-682-1090

When Completed, E-mail to: chris.seeds@ks.gov

Kansas Department of Health & Environment – Attn: Chris Seeds
Or Mail to: 1000 SW Jackson St., Suite 420, Topeka, KS 66612-1367
Fax 785.296.0086

SANITARY SEWER OVERFLOWS

APRIL 2020

**KANSAS DEPARTMENT OF HEALTH AND ENVIRONMENT
WASTEWATER INCIDENT REPORT FORM**

Definitions are available at <http://www.kdheks.gov/water/tech.html>

Collection System Bypass In-Plant Diversion Upset In-Plant Flow Through Spill

1. FACILITY NAME: Leavenworth, City of Kansas Permit # M-MO12-IO01
2. Within 24 hours of discovery, notify the KDHE Central Office (email – chris.seeds@ks.gov), (fax 785.296.0086), (telephone 785.296.5517) or your local KDHE district office. Written notification is required within 5 days of discovery. If the incident is not corrected within 5 days, send a written notification to KDHE indicating the status. This form is to be sent to KDHE when the incident ends.

KDHE Person Contacted: Chris Seeds Date: 4/9/2020 Time: 6:22 am

3. Date Incident Discovered: 4/8/2020 Time: 11:14 am
4. Date Incident Ended: 4/8/2020 Time: 11:56 am
5. Total estimated gallons bypassed, spilled, or routed through failed equipment for all locations on this form: 75 Gallons
6. If rainfall induced event, approximate inches of rainfall n/a
If multiple locations listed below due to rain event, check here

7. Incident Location: (check all that apply)
- | | |
|--|--|
| <input type="checkbox"/> Plant | <input type="checkbox"/> City Collection Line (Line Break / Joint) |
| <input type="checkbox"/> Lift/Pump Station | <input type="checkbox"/> Private Sewer Line |
| <input type="checkbox"/> Peak Flow Basin | <input checked="" type="checkbox"/> Basement |
| <input type="checkbox"/> Manhole(s) | <input type="checkbox"/> Other (specify below) |

Identify **All** Incident Locations by Name, Street Address or Manhole Number as appropriate.

801 S 9th St. confined to basement of house

8. Cause of Incident:
- | | |
|---|--|
| <input type="checkbox"/> Intentional Bypass for Repair/Construction | <input type="checkbox"/> Equipment Failure |
| <input type="checkbox"/> Excessive Rainfall, Snow Melt | <input type="checkbox"/> Control System Failure |
| <input type="checkbox"/> Unplanned Construction Related Break | <input type="checkbox"/> Power Related Failure |
| <input type="checkbox"/> City Line Break (Not Construction Related) | <input type="checkbox"/> Operations Related Failure |
| <input type="checkbox"/> City Line Blockage | <input type="checkbox"/> Maintenance Related Failure |
| <input type="checkbox"/> Private Line Break | <input type="checkbox"/> Vandalism |
| <input checked="" type="checkbox"/> Private Line Blockage | <input type="checkbox"/> Other |
| <input type="checkbox"/> Lagoon High Level | |

Additional explanation of reason for Incident: (use additional page if necessary)

Plumber was on site said started draining and went down. Plumber said manhole was backed up but when city crews arrived on-site there was no manhole backed up.

9. Corrective Action, if any: (use additional page if necessary)
City crews went ahead and cleaned line.

Name: Tim Guardado Date: 4/9/2020
Title: Superintendent Phone: 913-682-1090

When Completed, E-mail to: chris.seeds@ks.gov

Kansas Department of Health & Environment – Attn: Chris Seeds
Or Mail to: 1000 SW Jackson St., Suite 420, Topeka, KS 66612-1367
Fax 785.296.0086

**KANSAS DEPARTMENT OF HEALTH AND ENVIRONMENT
WASTEWATER INCIDENT REPORT FORM**

Definitions are available at <http://www.kdheks.gov/water/tech.html>

Collection System Bypass In-Plant Diversion Upset In-Plant Flow Through Spill

1. FACILITY NAME: Leavenworth, City of Kansas Permit # M-MO12-IO01
2. Within 24 hours of discovery, notify the KDHE Central Office (email – chris.seeds@ks.gov), (fax 785.296.0086), (telephone 785.296.5517) or your local KDHE district office. Written notification is required within 5 days of discovery. If the incident is not corrected within 5 days, send a written notification to KDHE indicating the status. This form is to be sent to KDHE when the incident ends.

KDHE Person Contacted: Chris Seeds Date: 4/14/20 Time: 8:21 am

3. Date Incident Discovered: 4/6/20 Time: 10:54 am
4. Date Incident Ended: 4/11/20 Time: 8:22 pm
5. Total estimated gallons bypassed, spilled, or routed through failed equipment for all locations on this form: 100 gallons
6. If rainfall induced event, approximate inches of rainfall n/a
If multiple locations listed below due to rain event, check here

7. Incident Location: (check all that apply)
- | | |
|--|--|
| <input type="checkbox"/> Plant | <input type="checkbox"/> City Collection Line (Line Break / Joint) |
| <input type="checkbox"/> Lift/Pump Station | <input checked="" type="checkbox"/> Private Sewer Line |
| <input type="checkbox"/> Peak Flow Basin | <input type="checkbox"/> Basement |
| <input type="checkbox"/> Manhole(s) | <input type="checkbox"/> Other (specify below) |

Identify **All** Incident Locations by Name, Street Address or Manhole Number as appropriate.
407 Olive St. leaking from cleanout.

8. Cause of Incident:
- | | |
|---|--|
| <input type="checkbox"/> Intentional Bypass for Repair/Construction | <input type="checkbox"/> Equipment Failure |
| <input type="checkbox"/> Excessive Rainfall, Snow Melt | <input type="checkbox"/> Control System Failure |
| <input type="checkbox"/> Unplanned Construction Related Break | <input type="checkbox"/> Power Related Failure |
| <input type="checkbox"/> City Line Break (Not Construction Related) | <input type="checkbox"/> Operations Related Failure |
| <input type="checkbox"/> City Line Blockage | <input type="checkbox"/> Maintenance Related Failure |
| <input type="checkbox"/> Private Line Break | <input type="checkbox"/> Vandalism |
| <input checked="" type="checkbox"/> Private Line Blockage | <input type="checkbox"/> Other |
| <input type="checkbox"/> Lagoon High Level | |

Additional explanation of reason for Incident: (use additional page if necessary)

Private lateral blocked. Waiting for homeowner to get plumber to clean line out. 4/11/2020 called back to 401 Olive. Homeowner said he was cleaning area after plumber fixed.

9. Corrective Action, if any: (use additional page if necessary)
Homeowner had plumber out to clean line. Wanting confirmation from homeowner got a receipt from Plumber being there.

Name: Tim Guardado Date: 4/14/2020
Title: Superintendent Phone: 913-682-1090

When Completed, E-mail to: chris.seeds@ks.gov

Or Mail to: Kansas Department of Health & Environment – Attn: Chris Seeds
1000 SW Jackson St., Suite 420, Topeka, KS 66612-1367
Fax 785.296.0086

**KANSAS DEPARTMENT OF HEALTH AND ENVIRONMENT
WASTEWATER INCIDENT REPORT FORM**

Definitions are available at <http://www.kdheks.gov/water/tech.html>

Collection System Bypass In-Plant Diversion Upset In-Plant Flow Through Spill

1. FACILITY NAME: Leavenworth, City of Kansas Permit # M-MO12-IO01
2. Within 24 hours of discovery, notify the KDHE Central Office (email – chris.seeds@ks.gov), (fax 785.296.0086), (telephone 785.296.5517) or your local KDHE district office. Written notification is required within 5 days of discovery. If the incident is not corrected within 5 days, send a written notification to KDHE indicating the status. This form is to be sent to KDHE when the incident ends.

KDHE Person Contacted: Chris Seeds Date: 4/21/2020 Time: 11:11 am

3. Date Incident Discovered: 4/17/2020 Time: 3:40 pm
4. Date Incident Ended: 4/17/2020 Time: 4:40 pm
5. Total estimated gallons bypassed, spilled, or routed through failed equipment for all locations on this form: 50 gallons
6. If rainfall induced event, approximate inches of rainfall n/a
If multiple locations listed below due to rain event, check here

7. Incident Location: (check all that apply)
- | | |
|--|--|
| <input type="checkbox"/> Plant | <input type="checkbox"/> City Collection Line (Line Break / Joint) |
| <input type="checkbox"/> Lift/Pump Station | <input type="checkbox"/> Private Sewer Line |
| <input type="checkbox"/> Peak Flow Basin | <input checked="" type="checkbox"/> Basement |
| <input type="checkbox"/> Manhole(s) | <input type="checkbox"/> Other (specify below) |

Identify **All** Incident Locations by Name, Street Address or Manhole Number as appropriate.
2914 Shrine Park Rd. Basement

8. Cause of Incident:
- | | |
|---|--|
| <input type="checkbox"/> Intentional Bypass for Repair/Construction | <input type="checkbox"/> Equipment Failure |
| <input type="checkbox"/> Excessive Rainfall, Snow Melt | <input type="checkbox"/> Control System Failure |
| <input type="checkbox"/> Unplanned Construction Related Break | <input type="checkbox"/> Power Related Failure |
| <input type="checkbox"/> City Line Break (Not Construction Related) | <input type="checkbox"/> Operations Related Failure |
| <input checked="" type="checkbox"/> City Line Blockage | <input type="checkbox"/> Maintenance Related Failure |
| <input type="checkbox"/> Private Line Break | <input type="checkbox"/> Vandalism |
| <input type="checkbox"/> Private Line Blockage | <input type="checkbox"/> Other |
| <input type="checkbox"/> Lagoon High Level | |

Additional explanation of reason for Incident: (use additional page if necessary)
City main had slight blockage. Still allowing sewage by.

9. Corrective Action, if any: (use additional page if necessary)
City crews cleaned line and sewage in basement receded.

Name: Tim Guardado Date: 4/21/2020
Title: Superintendent Phone: 913-682-1090

When Completed, E-mail to: chris.seeds@ks.gov
Kansas Department of Health & Environment – Attn: Chris Seeds
Or Mail to: 1000 SW Jackson St., Suite 420, Topeka, KS 66612-1367
Fax 785.296.0086

**KANSAS DEPARTMENT OF HEALTH AND ENVIRONMENT
WASTEWATER INCIDENT REPORT FORM**

Definitions are available at <http://www.kdheks.gov/water/tech.html>

Collection System Bypass In-Plant Diversion Upset In-Plant Flow Through Spill

1. FACILITY NAME: Leavenworth, City of Kansas Permit # M-MO12-IO01
2. Within 24 hours of discovery, notify the KDHE Central Office (email – chris.seeds@ks.gov), (fax 785.296.0086), (telephone 785.296.5517) or your local KDHE district office. Written notification is required within 5 days of discovery. If the incident is not corrected within 5 days, send a written notification to KDHE indicating the status. This form is to be sent to KDHE when the incident ends.

KDHE Person Contacted: Chris Seeds Date: 4.22.2020 Time: 1:12 pm

3. Date Incident Discovered: 4.22.2020 Time: 11:25 am
4. Date Incident Ended: 4.22.2020 Time: 1:05pm
5. Total estimated gallons bypassed, spilled, or routed through failed equipment for all locations on this form: 30 Gallons
6. If rainfall induced event, approximate inches of rainfall n/a

If multiple locations listed below due to rain event, check here

7. Incident Location: (check all that apply)

<input type="checkbox"/> Plant	<input type="checkbox"/> City Collection Line (Line Break / Joint)
<input type="checkbox"/> Lift/Pump Station	<input checked="" type="checkbox"/> Private Sewer Line
<input type="checkbox"/> Peak Flow Basin	<input type="checkbox"/> Basement
<input type="checkbox"/> Manhole(s)	<input type="checkbox"/> Other (specify below)

Identify **All** Incident Locations by Name, Street Address or Manhole Number as appropriate.

1400 Kingman St. back of house out of a houses cleanout.

8. Cause of Incident:

<input type="checkbox"/> Intentional Bypass for Repair/Construction	<input type="checkbox"/> Equipment Failure
<input type="checkbox"/> Excessive Rainfall, Snow Melt	<input type="checkbox"/> Control System Failure
<input type="checkbox"/> Unplanned Construction Related Break	<input type="checkbox"/> Power Related Failure
<input type="checkbox"/> City Line Break (Not Construction Related)	<input type="checkbox"/> Operations Related Failure
<input type="checkbox"/> City Line Blockage	<input type="checkbox"/> Maintenance Related Failure
<input type="checkbox"/> Private Line Break	<input type="checkbox"/> Vandalism
<input checked="" type="checkbox"/> Private Line Blockage	<input type="checkbox"/> Other
<input type="checkbox"/> Lagoon High Level	

Additional explanation of reason for Incident: (use additional page if necessary)

Private lateral was blocked.

9. Corrective Action, if any: (use additional page if necessary)

Homeowner had Roto Rooter clear line 4/23/2020 late afternoon. They have Roto Rooter cctv'ing their line as well 4/24/2020.

Name: Tim Guardado Date: 4.24.2020

Title: Superintendent Phone: 913-682-1090

When Completed, E-mail to: chris.seeds@ks.gov

Kansas Department of Health & Environment – Attn: Chris Seeds
Or Mail to: 1000 SW Jackson St., Suite 420, Topeka, KS 66612-1367
Fax 785.296.0086

**KANSAS DEPARTMENT OF HEALTH AND ENVIRONMENT
WASTEWATER INCIDENT REPORT FORM**

Definitions are available at <http://www.kdheks.gov/water/tech.html>

Collection System Bypass In-Plant Diversion Upset In-Plant Flow Through Spill

1. FACILITY NAME: Leavenworth, City of Kansas Permit # M-MO12-IO01
2. Within 24 hours of discovery, notify the KDHE Central Office (email – chris.seeds@ks.gov), (fax 785.296.0086), (telephone 785.296.5517) or your local KDHE district office. Written notification is required within 5 days of discovery. If the incident is not corrected within 5 days, send a written notification to KDHE indicating the status. This form is to be sent to KDHE when the incident ends.

KDHE Person Contacted: Chris Seeds Date: 4/26/2020 Time: _____

3. Date Incident Discovered: 4/24/2020 Time: 10:15 pm

4. Date Incident Ended: 4/25/2020 Time: 12:50 am

5. Total estimated gallons bypassed, spilled, or routed through failed equipment for all locations on this form: unknown

6. If rainfall induced event, approximate inches of rainfall n/a

If multiple locations listed below due to rain event, check here

7. Incident Location: (check all that apply)

- | | |
|--|--|
| <input type="checkbox"/> Plant | <input type="checkbox"/> City Collection Line (Line Break / Joint) |
| <input type="checkbox"/> Lift/Pump Station | <input type="checkbox"/> Private Sewer Line |
| <input type="checkbox"/> Peak Flow Basin | <input checked="" type="checkbox"/> Basement |
| <input type="checkbox"/> Manhole(s) | <input checked="" type="checkbox"/> Other (specify below) |

Identify **All** Incident Locations by Name, Street Address or Manhole Number as appropriate.

920 & 922 Brookside St. Sewage was in basement. But no access granted to check. Property Manager said it was coming out of cleanout. If so it had stopped upon arrival. Raining hard to tell.

8. Cause of Incident:

- | | |
|---|--|
| <input type="checkbox"/> Intentional Bypass for Repair/Construction | <input type="checkbox"/> Equipment Failure |
| <input type="checkbox"/> Excessive Rainfall, Snow Melt | <input type="checkbox"/> Control System Failure |
| <input type="checkbox"/> Unplanned Construction Related Break | <input type="checkbox"/> Power Related Failure |
| <input type="checkbox"/> City Line Break (Not Construction Related) | <input type="checkbox"/> Operations Related Failure |
| <input type="checkbox"/> City Line Blockage | <input type="checkbox"/> Maintenance Related Failure |
| <input type="checkbox"/> Private Line Break | <input type="checkbox"/> Vandalism |
| <input checked="" type="checkbox"/> Private Line Blockage | <input type="checkbox"/> Other |
| <input type="checkbox"/> Lagoon High Level | |

Additional explanation of reason for Incident: (use additional page if necessary)

City crews CCTV line found the lateral from the house was full of roots.

9. Corrective Action, if any: (use additional page if necessary)

Property management cleared line. As well city crews cleaned line.

Name: Tim Guardado Date: 4/28/2020

Title: Superintendent Phone: 913-682-1090

When Completed, E-mail to: chris.seeds@ks.gov

Or Mail to: Kansas Department of Health & Environment – Attn: Chris Seeds
1000 SW Jackson St., Suite 420, Topeka, KS 66612-1367
Fax 785.296.0086

SANITARY SEWER OVERFLOWS

MAY 2020

**KANSAS DEPARTMENT OF HEALTH AND ENVIRONMENT
WASTEWATER BYPASS REPORT FORM**

1. FACILITY NAME: Fort Leavenworth Kansas Permit # M-MO12-IO 01

2. Within 24 Hours of Discovery, Notify the KDHE Central Office (email – cseeds@kdhe.state.ks.us), (fax 785.296.0086), (telephone 785.296.5517) or your KDHE local district office. Written notification required within 5 days of discovery.

KDHE Person Contacted: Chris Seeds Date: 5/6/2020 Time: 3:12pm

3. Date Bypass Discovered: 5/6/2020 Time: 10:15am

4. Date Bypass Ended: 5/6/2020 Time: 1:30pm

5. Total Estimated Gallons Bypassed for All Locations on this Form: 300 gallons

6. If rainfall event, approximate inches of rainfall N/A

If multiple bypass locations listed below due to rain event, check here _____

7. Bypass Location (check all that apply):

<input type="checkbox"/> Plant	<input type="checkbox"/> City Collection Line
<input checked="" type="checkbox"/> Lift/Pump Station	<input checked="" type="checkbox"/> Private Sewer Line
<input type="checkbox"/> Peak Flow Basin	<input type="checkbox"/> Other (specify below)
<input type="checkbox"/> Manhole(s) (list manhole #'s below)	
<u>Force Main Near Disciplinary Barracks Lift Station – N Warehouse Rd, Fort Leavenworth, KS, 66027</u>	

8. Cause of Bypass: (definitions available at <http://www.kdheks.gov/water/tech.html>)

<input type="checkbox"/> Intentional Bypass for Repair/Construction	<input type="checkbox"/> Equipment Failure
<input type="checkbox"/> Excessive Rainfall, Snow Melt	<input type="checkbox"/> Control System Failure
<input checked="" type="checkbox"/> Unplanned Construction Related Break	<input type="checkbox"/> Power Related Failure
<input type="checkbox"/> City Line Break (Not Construction Related)	<input type="checkbox"/> Operations Related Failure
<input type="checkbox"/> City Line Blockage	<input type="checkbox"/> Maintenance Related Failure
<input type="checkbox"/> Private Line Break	<input type="checkbox"/> Vandalism
<input type="checkbox"/> Private Line Blockage	<input type="checkbox"/> Spill
<input type="checkbox"/> Lagoon High Level	<input type="checkbox"/> Other

Additional explanation of reason for bypass: (use additional page if necessary)

A contractor working near the DB Lift Station struck a force main causing wastewater to leak. The wastewater was confined to the excavation near the break. The wet wells of the DB Lift Station held all incoming wastewater while the force main was repaired. The waste was collected using the vacuum truck and the area was disinfected with lime once the break was repaired.

9. Corrective Action, if any: (use additional page if necessary)

Force main was repaired while the DB Lift Station held all incoming wastewater.

Name: Andrew Turner Date: 5/7/2020

Title: Specialist, Environmental, Health and Safety

When Completed, Mail to: Kansas Department of Health and Environment
Attn: Chris Seeds
1000 SW Jackson St., Suite 420
Topeka, KS 66612-1367

**KANSAS DEPARTMENT OF HEALTH AND ENVIRONMENT
WASTEWATER INCIDENT REPORT FORM**

Definitions are available at <http://www.kdheks.gov/water/tech.html>

Collection System Bypass In-Plant Diversion Upset In-Plant Flow Through Spill

1. FACILITY NAME: Leavenworth, City of Kansas Permit # M-MO12-IO01
 2. Within 24 hours of discovery, notify the KDHE Central Office (email – chris.seeds@ks.gov), (fax 785.296.0086), (telephone 785.296.5517) or your local KDHE district office. Written notification is required within 5 days of discovery. If the incident is not corrected within 5 days, send a written notification to KDHE indicating the status. This form is to be sent to KDHE when the incident ends.

KDHE Person Contacted: Chris Seeds Date: 5.16.20 ~~11.19.2020~~ Time: 7:30am

3. Date Incident Discovered: 5.18.2020 Time: 12:22 pm
 4. Date Incident Ended: 5.22.2020 Time: 9:24am
 5. Total estimated gallons bypassed, spilled, or routed through failed equipment for all locations on this form: unknown(homeowner cleaned)
 6. If rainfall induced event, approximate inches of rainfall n/a
 If multiple locations listed below due to rain event, check here

7. Incident Location: (check all that apply)
- | | |
|--|--|
| <input type="checkbox"/> Plant | <input type="checkbox"/> City Collection Line (Line Break / Joint) |
| <input type="checkbox"/> Lift/Pump Station | <input type="checkbox"/> Private Sewer Line |
| <input type="checkbox"/> Peak Flow Basin | <input checked="" type="checkbox"/> Basement |
| <input type="checkbox"/> Manhole(s) | <input type="checkbox"/> Other (specify below) |

Identify **All** Incident Locations by Name, Street Address or Manhole Number as appropriate.
517 Buttinger St. basement of the house.

8. Cause of Incident:
- | | |
|---|--|
| <input type="checkbox"/> Intentional Bypass for Repair/Construction | <input type="checkbox"/> Equipment Failure |
| <input type="checkbox"/> Excessive Rainfall, Snow Melt | <input type="checkbox"/> Control System Failure |
| <input type="checkbox"/> Unplanned Construction Related Break | <input type="checkbox"/> Power Related Failure |
| <input type="checkbox"/> City Line Break (Not Construction Related) | <input type="checkbox"/> Operations Related Failure |
| <input type="checkbox"/> City Line Blockage | <input type="checkbox"/> Maintenance Related Failure |
| <input checked="" type="checkbox"/> Private Line Break | <input type="checkbox"/> Vandalism |
| <input type="checkbox"/> Private Line Blockage | <input type="checkbox"/> Other |
| <input type="checkbox"/> Lagoon High Level | |

Additional explanation of reason for incident: (use additional page if necessary)
Private line was blocked. City CCTV the city main looked up private line and seen that it was full of roots.

9. Corrective Action, if any: (use additional page if necessary)
City crews cleaned city main then inspected main. Found lateral was full of roots. Homeowner cleaned Line.

Name: Tim Guardado Date: 5.26.2020
 Title: Superintendent Phone: 913-682-1090

When Completed, E-mail to: chris.seeds@ks.gov
 Kansas Department of Health & Environment – Attn: Chris Seeds
 Or Mail to: 1000 SW Jackson St., Suite 420, Topeka, KS 66612-1367
 Fax 785.296.0086

**KANSAS DEPARTMENT OF HEALTH AND ENVIRONMENT
WASTEWATER INCIDENT REPORT FORM**

Definitions are available at <http://www.kdheks.gov/water/tech.html>

Collection System Bypass In-Plant Diversion Upset In-Plant Flow Through Spill

1. FACILITY NAME: Leavenworth, City of Kansas Permit # M-MO12-IO01

2. Within 24 hours of discovery, notify the KDHE Central Office (email – chris.seeds@ks.gov), (fax 785.296.0086), (telephone 785.296.5517) or your local KDHE district office. Written notification is required within 5 days of discovery. If the incident is not corrected within 5 days, send a written notification to KDHE indicating the status. This form is to be sent to KDHE when the incident ends.

KDHE Person Contacted: Chris Seeds Date: 5.19.2020 Time: 1:48pm

3. Date Incident Discovered: 5.19.2020 Time: 12:05pm

4. Date Incident Ended: 5.26.2020 Time: 8:59am

5. Total estimated gallons bypassed, spilled, or routed through failed equipment for all locations on this form: 10 gallons

6. If rainfall induced event, approximate inches of rainfall n/a

If multiple locations listed below due to rain event, check here

7. Incident Location: (check all that apply)

- | | |
|--|--|
| <input type="checkbox"/> Plant | <input type="checkbox"/> City Collection Line (Line Break / Joint) |
| <input type="checkbox"/> Lift/Pump Station | <input type="checkbox"/> Private Sewer Line |
| <input type="checkbox"/> Peak Flow Basin | <input checked="" type="checkbox"/> Basement |
| <input type="checkbox"/> Manhole(s) | <input checked="" type="checkbox"/> Other (specify below) |

Identify **All** Incident Locations by Name, Street Address or Manhole Number as appropriate.

2300 Hebbeln dr in the basement and signs of backup in stand up shower and stool. This was stopped On the 5.19.2020. Got confirmation from Mr Sip on 5.26.2020 that he had gotten septic tank cleaned.

8. Cause of Incident:

- | | |
|---|--|
| <input type="checkbox"/> Intentional Bypass for Repair/Construction | <input type="checkbox"/> Equipment Failure |
| <input type="checkbox"/> Excessive Rainfall, Snow Melt | <input type="checkbox"/> Control System Failure |
| <input type="checkbox"/> Unplanned Construction Related Break | <input type="checkbox"/> Power Related Failure |
| <input type="checkbox"/> City Line Break (Not Construction Related) | <input type="checkbox"/> Operations Related Failure |
| <input type="checkbox"/> City Line Blockage | <input type="checkbox"/> Maintenance Related Failure |
| <input type="checkbox"/> Private Line Break | <input type="checkbox"/> Vandalism |
| <input checked="" type="checkbox"/> Private Line Blockage | <input type="checkbox"/> Other |
| <input type="checkbox"/> Lagoon High Level | |

Additional explanation of reason for Incident: (use additional page if necessary)

Septic tank backing up

9. Corrective Action, if any: (use additional page if necessary)

City crews checked city mains and found no problems. Later determined that he has a septic tank.

Septic tank problems fixed according to Mr. George Sip.

Name: Tim Guardado Date: 5.26.2020

Title: Superintendent Phone 913-682-1090

When Completed, E-mail to: chris.seeds@ks.gov

Or Mail to: Kansas Department of Health & Environment – Attn: Chris Seeds
1000 SW Jackson St., Suite 420, Topeka, KS 66612-1367
Fax 785.296.0086

**KANSAS DEPARTMENT OF HEALTH AND ENVIRONMENT
WASTEWATER INCIDENT REPORT FORM**

Definitions are available at <http://www.kdheks.gov/water/tech.html>

Collection System Bypass In-Plant Diversion Upset In-Plant Flow Through Spill

1. FACILITY NAME: Leavenworth, City of Kansas Permit # M-MO12-IO01
2. Within 24 hours of discovery, notify the KDHE Central Office (email – chris.seeds@ks.gov), (fax 785.296.0086), (telephone 785.296.5517) or your local KDHE district office. Written notification is required within 5 days of discovery. If the incident is not corrected within 5 days, send a written notification to KDHE indicating the status. This form is to be sent to KDHE when the incident ends.

KDHE Person Contacted: Chris Seeds Date: 5.26.2020 Time: 11:55am

3. Date Incident Discovered: 5.26.2020 Time: 10:47 am

4. Date Incident Ended: 5.26.2020 Time: 11:25 am

5. Total estimated gallons bypassed, spilled, or routed through failed equipment for all locations on this form: 5 Gallons

6. If rainfall induced event, approximate inches of rainfall n/a

If multiple locations listed below due to rain event, check here

7. Incident Location: (check all that apply)

- | | |
|--|--|
| <input type="checkbox"/> Plant | <input type="checkbox"/> City Collection Line (Line Break / Joint) |
| <input type="checkbox"/> Lift/Pump Station | <input checked="" type="checkbox"/> Private Sewer Line |
| <input type="checkbox"/> Peak Flow Basin | <input type="checkbox"/> Basement |
| <input type="checkbox"/> Manhole(s) | <input type="checkbox"/> Other (specify below) |

Identify **All** Incident Locations by Name, Street Address or Manhole Number as appropriate.

713 Pottawatomie St. had sewage standing in cleanout. 715 Pottawatomie St. had sewage in cleanout with a very little on ground out of cleanout.

8. Cause of Incident:

- | | |
|---|--|
| <input type="checkbox"/> Intentional Bypass for Repair/Construction | <input type="checkbox"/> Equipment Failure |
| <input type="checkbox"/> Excessive Rainfall, Snow Melt | <input type="checkbox"/> Control System Failure |
| <input type="checkbox"/> Unplanned Construction Related Break | <input type="checkbox"/> Power Related Failure |
| <input type="checkbox"/> City Line Break (Not Construction Related) | <input type="checkbox"/> Operations Related Failure |
| <input type="checkbox"/> City Line Blockage | <input type="checkbox"/> Maintenance Related Failure |
| <input type="checkbox"/> Private Line Break | <input type="checkbox"/> Vandalism |
| <input checked="" type="checkbox"/> Private Line Blockage | <input type="checkbox"/> Other |
| <input type="checkbox"/> Lagoon High Level | |

Additional explanation of reason for Incident: (use additional page if necessary)

Private line from these two houses was blocked.

9. Corrective Action, if any: (use additional page if necessary)

City cleaned main and advised tenants that there was no problem in city main. They called landlord

Who said he would get a plumber at 713 Pottawatomie St.

Name: Tim Guardado Date: 6.1.2020

Title: Superintendent Phone: 913-682-1090

When Completed, E-mail to: chris.seeds@ks.gov

Kansas Department of Health & Environment – Attn: Chris Seeds

Or Mail to: 1000 SW Jackson St., Suite 420, Topeka, KS 66612-1367

Fax 785.296.0086

**KANSAS DEPARTMENT OF HEALTH AND ENVIRONMENT
WASTEWATER INCIDENT REPORT FORM**

Definitions are available at <http://www.kdheks.gov/water/tech.html>

Collection System Bypass In-Plant Diversion Upset In-Plant Flow Through Spill

1. FACILITY NAME: Leavenworth, City of Kansas Permit # M-MO12-IO01
2. Within 24 hours of discovery, notify the KDHE Central Office (email – chris.seeds@ks.gov), (fax 785.296.0086), (telephone 785.296.5517) or your local KDHE district office. Written notification is required within 5 days of discovery. If the incident is not corrected within 5 days, send a written notification to KDHE indicating the status. This form is to be sent to KDHE when the incident ends.

KDHE Person Contacted: Chris Seeds Date: 5.27.2020 Time: 6:33 pm

3. Date Incident Discovered: 5.27.2020 Time: 4:10 pm
4. Date Incident Ended: 5.27.2020 Time: 6:00 pm
5. Total estimated gallons bypassed, spilled, or routed through failed equipment for all locations on this form: 2,400 estimated gallons
6. If rainfall induced event, approximate inches of rainfall n/a
 If multiple locations listed below due to rain event, check here

7. Incident Location: (check all that apply)
- | | |
|--|---|
| <input type="checkbox"/> Plant | <input checked="" type="checkbox"/> City Collection Line (Line Break / Joint) |
| <input type="checkbox"/> Lift/Pump Station | <input type="checkbox"/> Private Sewer Line |
| <input type="checkbox"/> Peak Flow Basin | <input type="checkbox"/> Basement |
| <input type="checkbox"/> Manhole(s) | <input type="checkbox"/> Other (specify below) |

Identify **All** Incident Locations by Name, Street Address or Manhole Number as appropriate.

3000 Lakeview Ct. City collection line where lateral from house ties into line. This is at a creek Crossing to a stream that runs into 5 mile creek.

8. Cause of Incident:
- | | |
|---|--|
| <input type="checkbox"/> Intentional Bypass for Repair/Construction | <input type="checkbox"/> Equipment Failure |
| <input type="checkbox"/> Excessive Rainfall, Snow Melt | <input type="checkbox"/> Control System Failure |
| <input type="checkbox"/> Unplanned Construction Related Break | <input type="checkbox"/> Power Related Failure |
| <input type="checkbox"/> City Line Break (Not Construction Related) | <input type="checkbox"/> Operations Related Failure |
| <input checked="" type="checkbox"/> City Line Blockage | <input type="checkbox"/> Maintenance Related Failure |
| <input type="checkbox"/> Private Line Break | <input type="checkbox"/> Vandalism |
| <input type="checkbox"/> Private Line Blockage | <input type="checkbox"/> Other |
| <input type="checkbox"/> Lagoon High Level | |

Additional explanation of reason for Incident: (use additional page if necessary)

City crews cleaned main. Lots of grease seen coming out of main into manhole.

9. Corrective Action, if any: (use additional page if necessary)
City crews cleaned city main to clear obstruction.

High creeks due to rain.

Name: Tim Guardado Date: 5.28.2020

Title: Superintendent Phone: 913-682-1090

When Completed, E-mail to: chris.seeds@ks.gov

Kansas Department of Health & Environment – Attn: Chris Seeds
Or Mail to: 1000 SW Jackson St., Suite 420, Topeka, KS 66612-1367
Fax 785.296.0086

SANITARY SEWER OVERFLOWS

JUNE 2020

**KANSAS DEPARTMENT OF HEALTH AND ENVIRONMENT
WASTEWATER INCIDENT REPORT FORM**

Definitions are available at <http://www.kdheks.gov/water/tech.html>

Collection System Bypass In-Plant Diversion Upset In-Plant Flow Through Spill

1. FACILITY NAME: Leavenworth, City of Kansas Permit # M-MO12-IO01
 2. Within 24 hours of discovery, notify the KDHE Central Office (email – chris.seeds@ks.gov), (fax 785.296.0086), (telephone 785.296.5517) or your local KDHE district office. Written notification is required within 5 days of discovery. If the incident is not corrected within 5 days, send a written notification to KDHE indicating the status. This form is to be sent to KDHE when the incident ends.

KDHE Person Contacted: Chris Seeds Date: 6.7.2020 Time: 1:00 pm

3. Date Incident Discovered: 6.7.2020 Time: 8:00 am
 4. Date Incident Ended: 6.7.2020 Time: 8:00 am
 5. Total estimated gallons bypassed, spilled, or routed through failed equipment for all locations on this form: 1 MG
 6. If rainfall induced event, approximate inches of rainfall n/a
 If multiple locations listed below due to rain event, check here

7. Incident Location: (check all that apply)
- | | |
|--|--|
| <input checked="" type="checkbox"/> Plant | <input type="checkbox"/> City Collection Line (Line Break / Joint) |
| <input type="checkbox"/> Lift/Pump Station | <input type="checkbox"/> Private Sewer Line |
| <input type="checkbox"/> Peak Flow Basin | <input type="checkbox"/> Basement |
| <input type="checkbox"/> Manhole(s) | <input type="checkbox"/> Other (specify below) |

Identify **All** Incident Locations by Name, Street Address or Manhole Number as appropriate.
1800 S 2nd St. Wastewater treatment plant. Partially treated Wastewater bypassed through overflow and out to the Missouri River. It was noticed at 8:00am 6.7.2020- believed to start at 6.6.2020 8:00pm

8. Cause of Incident:
- | | |
|---|---|
| <input type="checkbox"/> Intentional Bypass for Repair/Construction | <input checked="" type="checkbox"/> Equipment Failure |
| <input type="checkbox"/> Excessive Rainfall, Snow Melt | <input type="checkbox"/> Control System Failure |
| <input type="checkbox"/> Unplanned Construction Related Break | <input checked="" type="checkbox"/> Power Related Failure |
| <input type="checkbox"/> City Line Break (Not Construction Related) | <input type="checkbox"/> Operations Related Failure |
| <input type="checkbox"/> City Line Blockage | <input type="checkbox"/> Maintenance Related Failure |
| <input type="checkbox"/> Private Line Break | <input type="checkbox"/> Vandalism |
| <input type="checkbox"/> Private Line Blockage | <input type="checkbox"/> Other |
| <input type="checkbox"/> Lagoon High Level | |

Additional explanation of reason for Incident: (use additional page if necessary)
Power to PLC in Settled Sewage building was lost.

9. Corrective Action, if any: (use additional page if necessary)
Reset power and the PLC came back on turning pumps back on. Put pumps in hand until PLC came back on.

Name: Tim Guardado Date: 6.8.2020
 Title: Superintendent Phone: 913-682-1090

When Completed, E-mail to: chris.seeds@ks.gov
 Kansas Department of Health & Environment – Attn: Chris Seeds
 Or Mail to: 1000 SW Jackson St., Suite 420, Topeka, KS 66612-1367
 Fax 785.296.0086

**KANSAS DEPARTMENT OF HEALTH AND ENVIRONMENT
WASTEWATER INCIDENT REPORT FORM**

Definitions are available at <http://www.kdheks.gov/water/tech.html>

Collection System Bypass In-Plant Diversion Upset In-Plant Flow Through Spill

1. FACILITY NAME: Leavenworth, City of Kansas Permit # M-MO12-IO01
2. Within 24 hours of discovery, notify the KDHE Central Office (email – chris.seeds@ks.gov), (fax 785.296.0086), (telephone 785.296.5517) or your local KDHE district office. Written notification is required within 5 days of discovery. If the incident is not corrected within 5 days, send a written notification to KDHE indicating the status. This form is to be sent to KDHE when the incident ends.

KDHE Person Contacted: Chris Seeds Date: 6.18/2020 Time: 3:42pm

3. Date Incident Discovered: 6.18.2020 Time: 2:10 pm
4. Date Incident Ended: 6.18.2020 Time: 3:05 pm
5. Total estimated gallons bypassed, spilled, or routed through failed equipment for all locations on this form: 25 gallons
6. If rainfall induced event, approximate inches of rainfall n/a

If multiple locations listed below due to rain event, check here

7. Incident Location: (check all that apply)

<input type="checkbox"/> Plant	<input type="checkbox"/> City Collection Line (Line Break / Joint)
<input type="checkbox"/> Lift/Pump Station	<input type="checkbox"/> Private Sewer Line
<input type="checkbox"/> Peak Flow Basin	<input checked="" type="checkbox"/> Basement
<input type="checkbox"/> Manhole(s)	<input type="checkbox"/> Other (specify below)

Identify **All** Incident Locations by Name, Street Address or Manhole Number as appropriate.
1013 N. 10th St. in the basement of the house.

8. Cause of Incident:

<input type="checkbox"/> Intentional Bypass for Repair/Construction	<input type="checkbox"/> Equipment Failure
<input type="checkbox"/> Excessive Rainfall, Snow Melt	<input type="checkbox"/> Control System Failure
<input type="checkbox"/> Unplanned Construction Related Break	<input type="checkbox"/> Power Related Failure
<input type="checkbox"/> City Line Break (Not Construction Related)	<input type="checkbox"/> Operations Related Failure
<input type="checkbox"/> City Line Blockage	<input type="checkbox"/> Maintenance Related Failure
<input type="checkbox"/> Private Line Break	<input type="checkbox"/> Vandalism
<input checked="" type="checkbox"/> Private Line Blockage	<input type="checkbox"/> Other
<input type="checkbox"/> Lagoon High Level	

Additional explanation of reason for Incident: (use additional page if necessary)

Private line was blocked. Homeowner said they would take care of problem. City staff has made Multiple attempts to contact homeowner to check for repairs with no contact.

9. Corrective Action, if any: (use additional page if necessary)

City crews cleaned city main. Checked house but still had a backup. Homeowners said they would Get taken care of.

Name: Tim Guardado

Date: 07.03.2020

Title: Superintendent

Phone 913-682-1090

When Completed, E-mail to: chris.seeds@ks.gov

Kansas Department of Health & Environment – Attn: Chris Seeds
Or Mail to: 1000 SW Jackson St., Suite 420, Topeka, KS 66612-1367
Fax 785.296.0086

CITY of LEAVENWORTH WASTEWATER TREATMENT PLANT - JANUARY 1, 2020-JUNE 30, 2020

MAINTENANCE LOG

LOCATION	UP/DOWN MH	FOOTAGE	DATE/TIME	FLUSH	ROD	CHECK	CREW	VEHICLE	REASON/PROBLEM
1320 S. 4TH STREET	0619-0627	374							Sags 112' from MH 4207
210 ELM STREET	0614-0613.1	620							MH 0613.1 collects debris
306 S. 3RD STREET	0195-0194	408							Severe sags
100 N. 5TH STREET	0228-0227	828							Sewer smell in City Hall
401 DELAWARE STREET	0270-0269.1	391.5							Sags and grease
914 BROADWAY STREET	0065-0065.1	180							Sags and grease
744 POTTAWATOMIE	0165.1-0166	1000							Clean downstream flat
8TH & POTTAWATOMIE	0167-0168	200							Sags and grease
611 N. BROADWAY	0150.2-0150.1	55							Line is flat
11TH & KIOWA	0125.1-0125	200							Severe sags
1500 PAWNEE STREET	1160-1635	501							Sags 28' East MH 1159
14TH & MIAMI	1291-1290	168							Sags
2049 MARJORIE CIRCLE	1764-1763	144							Severe offset in joints and roots
GRAND AVE & IRONMOULDERS	0436-0436.1	159							Severe sags
705 SCOTT STREET	0526-0536.2	218							Roots
2109 S. 4TH STREET	0657.2-0657.1	20							Grease buildup
503 SPENCER PLACE	2437-2417-2416	475							Debris buildup in MH 2415
3917 LAKEVIEW DRIVE	1981.2-1981	414.7							Light to medium grease
CODY PARK	1443-1404	114							Creek crossing roots
2019 S. 3RD ANIMAL CONTROL	1895 - clean out	170'							Line flat collects debris

Date	Street	Up			Down			Size	Feet	Guar End
		Type	Loc	MH	Type	Loc	MH			
04/06/20	SHAWNEE STREET	M	A	0229.1	M	A	0229.2	8	314	04/06/22
04/06/20	KICKAPOO STREET	M	A	0149	M	A	0147	8	315	04/06/22
04/06/20	MIAMI STREET	M	A	0209.1	M	A	0209	8	315	04/06/22
04/06/20	MIAMI STREET	M	P	0198.3	M	P	0199	8	222	04/06/22
04/06/20	CHEROKEE STREET	M	E	0279	M	U	0278.2	8	282	04/06/22
04/06/20	CHEROKEE STREET	M	E	0279.1	M	E	0279	8	129	04/06/22
04/06/20	CHEROKEE STREET	M	U	0278.2	M	U	0278.1	8	58	04/06/22
04/06/20	CHEROKEE STREET	M	U	0278.1	M	U	0278	8	128	04/06/22
04/06/20	S 10TH STREET	M	E	0280	M	E	0279.1	8	250	04/06/22
04/06/20	OTTAWA STREET	M	A	0176.2	M	A	0176.1	8	123	04/06/22
04/06/20	PAWNEE STREET	M	A	0031	M	A	0024	8	307	04/06/23
04/06/20	CHEYENNE STREET	M	A	0045.1	M	A	0045	8	404	04/06/22
04/06/20	DAKOTA STREET	M	A	0719	M	A	0718	8	303	04/06/22
04/06/20	DAKOTA STREET	M	A	0718	M	A	0048	8	308	04/06/22
04/06/20	DAKOTA STREET	M	A	0047	M	A	0048	8	320	04/06/22
04/07/20	DAKOTA STREET	M	S	1545	M	S	1544	8	324	04/07/22
04/07/20	DENNEY LANE	M	E	1202	M	E	1201	8	317	04/07/22
04/07/20	DENNEY	M	E	1201	M	E	1200	8	321	04/07/22
04/07/20	N 18TH ST	M	E	1200	M	S	1477	8	257	04/07/22
04/07/20	N 18TH ST	M	S	1477	M	E	1199	8	60	04/07/22
04/07/20	N 18TH ST	M	E	1199	M	E	1198.1	8	318	04/07/22
04/07/20	MIAMI STREET	M	S	1647	M	C	1147	8	288	04/07/22
04/07/20	ALLEN STREET	M	S	0726	M	S	0725	8	334	04/07/22
04/07/20	TERRY STREET	M	S	0823	M	S	0821	8	255	04/07/22
04/07/20	OTTAWA STREET	M	E	0699.1	M	E	0699	12	157	04/07/23
04/07/20	RANDOLPH STREET	M	B	1154	M	S	1153	8	278	04/07/22
04/07/20	RANDOLPH STREET	M	B	1155	M	B	1154	8	351	04/07/22
04/07/20	KENTON STREET	M	B	1156	M	S	1152	8	422	04/07/22
04/07/20	KANSAS STREET	M	F	1716	M	S	1777.1	8	166	04/07/22
04/07/20	PENNSYLVANIA ST	M	F	1332	M	S	1331	8	200	04/07/22
04/07/20	MONTEZUMA STREE	M	S	1040	M	S	1039	8	188	04/07/22
04/08/20	LAWRENCE AVE	M	S	917	M	S	916	8	286	04/08/22
04/08/20	GERARD AVE	M	E	0900	M	S	0899	10	220	04/08/22
04/08/20	GARLAND STREET	M	S	0906	M	S	0905	10	327	04/08/22
04/08/20	GARLAND STREET	M	S	0904	M	S	0895	10	296	04/08/22
04/08/20	GARLAND STREET	M	E	0896	M	S	0895	10	235	04/08/22
04/08/20	4TH AVE	M	S	1308	M	S	0783	8	336	04/08/22
04/08/20	KINGMAN STREET	M	B	0978	M	B	0977	8	287	04/08/23
04/08/20	KINGMAN STREET	M	B	0977	M	S	977.1	8	299	04/08/22
04/08/20	5TH AVENUE	M	A	0537	M	S	0536.2	8	190	04/08/22
04/08/20	BUTTINGER PLACE	M	A	0791	M	A	0790	8	220	04/08/22
04/08/20	SHERMAN STREET	M	A	0941	M	A	0940	8	329	04/08/22
04/08/20	SHERMAN STREET	C	E	0941.2	M	A	0941	8	185	04/08/22
04/08/20	SHERIDAN STREET	M	E	09371.1	M	S	0937	8	421	04/08/23
04/08/20	ROSE STREET	M	S	0641	M	S	0640	8	315	04/08/23
04/09/20	ELM STREET	M	S	0585	M	A	0712	8	426	04/09/22
04/09/20	3RD AVENUE	M	E	1029	M	E	1030	8	156	04/09/22
04/09/20	2ND AVE	M	E	0804	M	E	0805	12	196	04/09/22
04/09/20	3RD AVENUE	M	B	1652	M	S	1651	8	238	04/09/23
04/09/20	4TH ST	M	A	0669	M	S	0667	8	174	04/09/22
04/09/20	LAKEVIEW DRIVE	M	S	2021	M	B	2021.1	8	209	04/09/23
04/09/20	LAKEVIEW DRIVE	M	S	1982	M	S	2021	8	175	04/09/22
04/09/20	VALLEYVIEW ROAD	M	S	1442	M	B	1441	10	178	04/09/22
04/09/20	VALHALLA PLACE	M	S	1695	M	D	1694	8	165	04/09/23
04/09/20	VALHALLA PLACE	M	D	1694	M	F	1693	8	300	04/09/23
04/09/20	INDEPENDENCE CO	M	B	1627	M	E	1626	15	262	04/09/22
04/09/20	TUDOR DRIVE	M	F	2002.1	M	F	2002	8	224	04/09/22
04/09/20	TUDOR DRIVE	M	F	2002	M	F	2003	8	192	04/09/22

Project Name: 20-0423

Job# 20-0423

Treated Dates: 04/06/20 - 04/09/20

Report Date: 04/14/20

<u>ated</u>	<u>Street</u>	<u>Up</u>	<u>Up</u>	<u>Up</u>	<u>Down</u>	<u>Down</u>	<u>Down</u>	<u>Size</u>	<u>Feet</u>	<u>Guar</u>	<u>End</u>
		<u>Type</u>	<u>Loc</u>	<u>MH</u>	<u>Type</u>	<u>Loc</u>	<u>MH</u>				

Manhole Type Codes:

C Clean Out
H House Number
L Line Number
M Manhole Number

Manhole Location Codes:

A Alley
B Backyard
E Easement (woods or no building)
F Front Yard
L Left Side Yard (when facing front)
R Right Side Yard (when facing front)
S Street
U Unknown

Break Down:

10 1,256
12 353
15 262
8 12,984
Total: 14,855

Westland Construction Inc.

20510 163rd Street
 Basehor, KS 66007
 (913) 724-3191

Invoice

Date	Invoice #
2/17/2020	8598

Bill To
City of Leavenworth, KS Attn: Tim Guardado 1800 S 2nd St Leavenworth, KS 66048

P.O. No.	Job Location	Terms
203 N Esplanade		

Description	Qty	Rate	Amount
Mobilization	1	1,500.00	1,500.00
Remove existing lamphole and install 4 ft diameter manhole up to 8ft deep and backfill all excavated areas with clean gravel.	1	8,000.00	8,000.00
Service Connection	1	850.00	850.00
<p>Exclusions: Extra depth of manhole over 8ft, Rock Excavation, Seeding, Erosion control, Surveying, Staking, Permits and Bonds of any kind. If Westar holds power poles, expenses will be passed through.</p> <p>Note: * \$2500 held for asphalt and concrete restoration.</p>			

Thank you for your business.	Total	\$10,350.00
	Payments/Credits	\$0.00
	Balance Due	\$10,350.00

Westland Construction Inc.

20510 163rd Street
 Basehor, KS 66007
 (913) 724-3191

Invoice

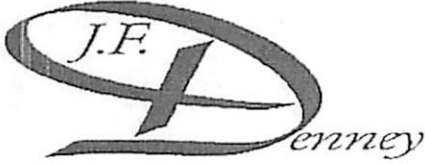
Date	Invoice #
2/17/2020	8599

Bill To
City of Leavenworth, KS Attn: Tim Guardado 1800 S 2nd St Leavenworth, KS 66048

P.O. No.	Job Location	Terms
	517 N Esplanade	

Description	Qty	Rate	Amount
Mobilization	1	1,500.00	1,500.00
Remove existing lamphole and install 4 ft diameter manhole up to 8ft deep and backfill all excavated areas with clean gravel.	1	6,000.00	6,000.00
Connect sanitary sewer services	3	850.00	2,550.00
Repair asphalt or concrete service (weather permitting). Including restoration and haul off of materials.	1	2,500.00	2,500.00
Exclusions: Extra depth of manhole over 8ft, rock excavation, seeding, erosion control, surveying, staking, permits and bonds of any kind.			

Thank you for your business.	Total	\$12,550.00
	Payments/Credits	\$0.00
	Balance Due	\$12,550.00



76 Ash Street PO Box 272
 Leavenworth Kansas 66048
 jfdenney.com
 913.682.2182

INVOICE



13606 W. 107th St.
 Lenexa, KS 66215
 jfdwater.com
 913.772.8994

Bill To: LEAV.WASTE WATER 1800 S 2ND STREET. LEAVENWORTH, KS 66048	Invoice Date: 03/25/2020	Invoice #: 199982	
	Job #: 213747	Job Site: LEAVENWORTH WASTE WATER 4808 BREWER PL LEAVENWORTH, KS 66048 Contact: TIM GUARDADO	
WO #: 213747	PO No:	Cust. # LEAV29	Terms: NET ON RECEIPT

Description of Work:

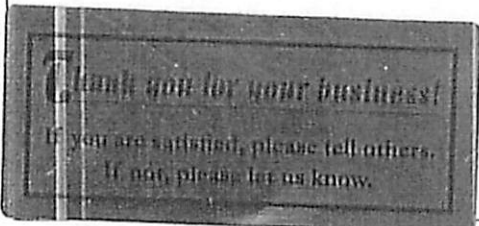
Work: 3/12/2020
 Servicemen: Brad and Dalton

Excavated and exposed 6" valve on the discharge side of the lift station.

Price per quote.

SubTotal: 1,735.00
Invoice Total: \$1,735.00

Amount Due:	\$1,735.00
--------------------	-------------------





PO Box 272
Leavenworth, KS 66048

Phone: 913-682-2182
Fax: 913-682-1437
E-mail: jfd@jfdenney.com
www.jfdenney.com

Customer: Leavenworth Wastewater Plant
1800 S 2nd Street
Leavenworth, KS 66048

Amount Due: \$7,784.29
Invoice #: 214002-1
Invoice Date: April 2, 2020
Customer ID: LEAV29

Work Date: 3/27-31/2020

Work Address: 300 Seneca
JFD W/O 214002

Description of Work:

Emergency sewer repair: remove sewer rodder nozzle from city's sewer main line

Total additional materials, labor and equipment \$7,784.29

City PO #

TOTAL: \$7,784.29

We greatly appreciate your business and hope that you are satisfied with our work.

Westland Construction Inc.

20510 163rd Street
Basehor, KS 66007
(913) 724-3191

Invoice

Date	Invoice #
5/14/2020	8838

Bill To
City of Leavenworth, KS Attn: Tim Guardado 1800 S 2nd St Leavenworth, KS 66048

P.O. No.	Job Location	Terms
	203 N Esplanade	

Description	Qty	Rate	Amount
Asphalt and concrete restoration	1	2,500.00	2,500.00

Thank you for your business.	Total	\$2,500.00
	Payments/Credits	\$0.00
	Balance Due	\$2,500.00

Leintz Lawn and
Construction
102 Timber Creek Circle
Lansing, KS 66043 US
913-683-5155
ian_leintz@yahoo.com

Invoice 1339



BILL TO
City Of Leavenworth

DATE 06/17/2020	PLEASE PAY \$3,550.00	DUE DATE 07/02/2020
--------------------	--	------------------------

ACTIVITY	QTY	RATE	AMOUNT
Excavation Replace 8" sanitary sewer main on Kiowa project as per directed.	10	275.00	2,750.00
Excavation Extra depth & service main Hookup 8" deep from edge of road	1	800.00	800.00
TOTAL DUE			\$3,550.00

THANK YOU.

McGuire Electric, LLC
 PO Box 402
 Tonganoxie, KS 66086
 913-295-1393

Invoice

Service Date	6/25/2020
--------------	-----------

Invoice # 3057

Bill To

City of Leavenworth
 100 N. 5th St.
 Leavenworth, KS 66048

Job #	Description	Purchase Order	Terms	Due Date
200221-KS	Select L/S Repairs	Tim Guardado	Net 30	7/25/2020
Quantity	Description	Rate		Amount
	Select L/S Repairs			1,500.00
Subtotal				\$1,500.00
Sales Tax (9.5%)				\$0.00
We appreciate the opportunity to serve you. Thank you for your business.			Balance Due	\$1,500.00

COMMERCIAL | INDUSTRIAL | CONTROLS | SERVICE | CONSTRUCTION

WPC Training 2020			
Employee	Training Received	Date	Location
Darrin Manna	Slips, Trips & Falls	January 9, 2020	WPC
Manual Carrera			
Lamar Conner			
Joe Kowalewski			
Patrick Fuimaono			
Sam Harrison			
Corwin Baggs			
Jon Lemke			
Mark Sedlock			
Jon Oney			
Reggie Williams			
Cassidy Williams			
Timothy Moore	HAZWOPER	February 28, 2020	Justice Center
Corwin Baggs			
Mark Sedlock	NASCO	April 2020	WPC
Patrick Fuimaono			
Timothy Moore	Defensive Driving	June 23, 2020	LVN Police
Tyriek Ford			
Timothy Moore	Truckers Against Trafficking Course	February 24, 2020	WPC

Colette Kiszka

From: Mike Hooper
Sent: Thursday, July 23, 2020 2:14 PM
To: Colette Kiszka
Subject: FW: Sewer Line Update

Mike Hooper
Deputy Director of Public Works
City of Leavenworth

From: Mike McDonald
Sent: Thursday, July 23, 2020 2:12 PM
To: Mike Hooper <mhooper@firstcity.org>
Subject: FW: Sewer Line Update

From: Steve Bieranowski <Steve.Bieranowski@homeserveusa.com>
Sent: Thursday, July 23, 2020 1:50 PM
To: Mike McDonald <MMcDonald@firstcity.org>
Subject: Sewer Line Update

Hi Mike,

This is the information finance was able to pull. Please let me know if you would like any further information.

- How many OUTSIDE SEWERLINE policies were there Dec31 2019 (or Jan 1 2020)
345
- How many OUTSIDE SEWERLINE polices were there June 30 2020
319
- How many NEW Accounts in the same time period
15 new policies from 1/1/20 – 6/30/20
- How many repairs
9 covered claims for a total of \$7083.50 (1/1/20 – 6/30/20)

Steve Bieranowski
Account Manager



Utility Service Partners, Inc.
Administrator for the National League of Cities
Service Line Warranty Program

4000 Town Center Blvd Suite 400 • Canonsburg, PA 15317
Mobile: 347-551-0244 Email: steve.bieranowski@homeserveusa.com
Phone: 724-749-1048 Web: www.utilitysp.net