



Sent via e-mail

January 23, 2020

Cynthia Sans
U.S. Environmental Protection Agency – Region 7
Water, Wetlands and Pesticides Division
11201 Renner Boulevard
Lenexa, KS 66219
sans.cynthia@epa.gov

RE: SSO Order of Compliance – Docket No. CWA-07-2015-0022
Compliance Actions – City of Leavenworth
Timeframe: July 1, 2019 to December 31, 2019

Ms. Sans:

Pursuant to Paragraphs 37 and 38 of the Order of Compliance on Consent, Docket No. CWA-07-2015-0022, the City of Leavenworth, Kansas is providing the following:

Paragraph 37. Attached is a listing of SSO “Transparency Report” notifications on the City of Leavenworth webpage at www.lvks.org and www.leavenworthks.org. These are related to SSO events that reached the Waters of the United States. Additional notifications of these events were made by the City Public Information Officer (PIO) via Social Media and elsewhere on the City’s webpage at www.lvks.org and www.leavenworthks.org. Please note that the City made substantial improvements to the webpage in 2019 which included a new URL.

There were three (3) SSO events that reached the Waters of the United States between July 1, 2019 and December 31, 2019.

August 7, 2019 - a local plumber contacted Water Pollution Control (WPC) to help locate a sanitary service line at 326 Choctaw Street. WPC personnel dye tested this line on August 5th and could not find where it entered the City sewer system. On August 8th, WPC found that the service line for 326 Choctaw Street was not connected to the sanitary sewer line, but was connected to the storm drain. Water Pollution Control placed contaminated creek signs and asked that residents stay out the water at 3-Mile Creek from 4th Street going east to the Missouri River until 326 Choctaw Street is connected to the City sewer system. The contaminated creek signs were removed when the sanitary sewer was no longer running into the storm drain.

August 26, 2019 - heavy rain caused a sanitary sewer manhole to overflow at 2nd Avenue and Thornton Street. The sewage overflow ran for 81 minutes and flowed an estimated 24,400 gallons into the storm drain and nearby creek. Water Pollution Control asked that residents stay out of this creek for a few days or until the contaminated creek signs are removed.

December 27, 2019 - 2:40 pm, a local plumber called WPC stating that a manhole was overflowing in the area of 838 Ottawa Street. When City crews responded to the call, they noticed the overflow out of manhole 0145. City crews jetted the line and cleared an obstruction. The overflow was stopped at 3:30 pm. Due to this overflow, wastewater reached a nearby creek and flowed down towards 3-Mile Creek. WPC cleaned the area and put contaminated creek signs out. Water Pollution Control asked the public to stay out of the creek from 838 Ottawa south to 3-Mile Creek until contaminated creek signs are removed.

A copy of the transparency reports related to these three (3) events is attached.

Paragraph 38. Describe actions taken by the City between July 1, 2019 and December 31, 2019 to comply with this order, and attach copies of all SSO reports submitted to KDHE.

(a.) The number of unauthorized discharges which occur within the City's POTW (Publicly-Owned Treatment Works) during the reporting period:

17 SSO events occurred during this period and were reported to KDHE. A report showing each event and resolution of the event is included with this letter.

- **12 Private-Line Events.** One (1) reached the Waters of the United States.
 - 0 events were from contractor actions
 - 12 events were not related to contractor actions
- **5 City-Line Events.** Two (2) reached Waters of the United States.
 - 1 event was from contractor actions
 - 4 events were not related to contractor actions
- **0 Fort Leavenworth Events** were reported by American Water to KDHE. It is unknown if Fort Leavenworth had overflows that were not reported. (The City of Leavenworth has no jurisdiction on Fort Leavenworth even though it is inside the City limits.)
- **0 USP Leavenworth Events (Bureau of Prisons).** Zero (0) SSO events were reported to KDHE. It is unknown if USP Leavenworth had overflows that were not reported. (The City of Leavenworth has no jurisdiction on USP Leavenworth even though it is inside the City limits.)

(b.) The specific measures taken by the City to correct and prevent recurrence of each unauthorized discharge which occurred within the City's POTW during the reporting period:

The City and residents have taken the actions as noted in the summary report related to Paragraph 38, section (a) above. In addition to those efforts, the following work occurred in the reporting period:

1. City continues to operate a CCTV crew. 4.8 miles were inspected during the reporting period for a total of 10.43 miles in 2019.
2. City continues to operate a cleaning and root elimination crew. 18.08 miles of sewer piping were cleaned during the reporting period for a total of 43.63 miles in 2019.
3. City inspected the results of the contract root control operations performed in March 2019 during the second half of 2019. Two (2) areas were identified for warranty work and the lines were re-treated. Specifications are being prepared for a similar project in 2020 which will treat approximately 15,086 feet of line for a cost of \$22,295.
4. City continues to operate a grease trap inspection program. Letters are sent to all relevant businesses annually and all known owners are contacted at least one time each year to request inspections and copies of maintenance records. The City has identified 72 grease trap locations from both open and closed businesses. Staff received copies of maintenance records from three (3) of the 72 grease trap installations during this reporting period. Zero (0) physical inspections were completed during this period with fifty (50) locations inspected during the 2019 calendar year. Three (3) new businesses installed grease traps and five (5) businesses closed during the reporting period.

The City continues to review and look at updates for the Grease Trap Program. Recommendations for the creation of fees and enforcement actions in the form of fines and/or the disconnection of water or sewer service have been sent to the City Manager and City Attorney for review.

5. City awarded construction contracts in the reporting period totaling \$480,215 for the annual Inflow/Infiltration construction. This work is under construction and will be complete in spring of 2020. Staff is currently working with engineers to design the 2020 Inflow/Infiltration project. Four (4) projects for manhole replacement or sewer line repairs totaling \$22,450 were awarded and completed.
6. City efforts related to retention of employees have resulted in the following during the reporting period:
 - a. Three (3) employees separated from WPC during the reporting period. Three (3) new employees were hired. Two (2) employees were promoted, one (1) to a Class II Operator and one (1) to WPC Superintendent. The department is down one (1) staff member at the end of this reporting period.

- b. Training and education opportunities are available for all operators; to include in-house and formal training, and three California correspondence courses. All KDHE-certified operators are current in their requirements.
- Four (4) employees attended the KDHE Annual School training,
 - One (1) employee participated in the Operation of Wastewater Treatment Plant, Volume 1 training by California State University, Sacramento.,
 - Three (3) employees attended training for NASSCO
 - One (1) employee completed CPR training
 - Ten (10) employees participated in the in-house H2S training
 - Twelve (12) employees participated in the in-house Tornado Spotter training
 - One (1) employee completed the requirements for Class 1 Wastewater Operator Certification.
 - One (1) employee completed the requirements for Class 2 Wastewater Operator Certification.
7. Two (2) cycles of creek-crossing inspections have occurred in the reporting period with zero (0) issues noted during this reporting period. Four (4) cycles of creek-crossing inspections were completed in 2019.
8. The “Trouble Line” list continues to be investigated by City staff. These lines are subjected to additional routine cleaning or inspection on approximately a monthly basis due to previous situations. There were no changes this reporting period and Twenty (20) lines remain on the “Trouble Line” list.
9. City has contracted with Service Line Warranties of America to provide an affordable repair option for all residential sewer lines (private lines). This optional program began in January 2017. Records indicate that three (3) fewer customer contracts were in place for the Sewer Line Warranty Program during the reporting period of July 1, 2019 to December 31, 2019 and four (4) warranty repairs occurred within the reporting period. Note that there were 345 service line contracts in place on December 31, 2019.
10. City Community Development Block Grant (CDBG) funds may be used to fund homeowner private sewer line repair or water line repair up to a maximum cap of \$5,000 depending on income qualifications. There was one (1) CDBG sewer line repair during the reporting period using CDBG funding for a total of \$1,155.00.
11. City Housing Trust Fund (HTF) resources may be used to assist homeowner private sewer line repair or water line repair up to a maximum cap of \$5,000 depending on income qualifications. There were no (0) HTF sewer line repairs during the reporting period.
12. In early 2018, the City of Leavenworth and City of Lansing signed a Memorandum of Understanding related to use of City of Lansing facilities for disposing of solids from the

Vactor truck. The Memorandum of Understanding between the two cities remained in place through the second half of 2019.

13. City has evaluated SSOs related to contractor actions. No patterns of behavior or actions were determined to be responsible. The need for situational awareness has been stressed to City inspectors and the contractors involved with the SSOs.
14. City has integrated all SSO events since 2009 into the publicly available GIS database. Events since 2015 are also characterized by year and volume and are linked to the KDHE Report. (<http://gis.firstcity.org/>)
15. City is pursuing a variety of stormwater related projects with stormwater utility funds. Many of these projects will result in less erosion of creek banks and back yards. Some of these projects involve stabilization of creek banks where sanitary sewer lines are exposed to excess bank degradation. Design of "Independence Court Project, No. 2018-896" was completed within the reporting period, and the estimated construction cost is in excess of \$550,000, expected to be bid in 2020.

(c.) A copy of each unauthorized discharge report submitted to KDHE: Copies of 17 KDHE SSO reports are attached to this letter. This includes zero (0) events on Fort Leavenworth and zero (0) events on USP Leavenworth.

If you have any questions or need additional documentation, please don't hesitate to contact me at 913-684-0375 or by email at mmcdonald@firstcity.org.

Sincerely,



Michael G. McDonald, P.E.,
Director of Public Works

cc: Paul Kramer, City Manager
Tom Stiles, Director, Bureau of Water, KDHE (sent via U.S. mail)
Brittany A. Barrientos, Attorney

Attachments

- Screenshots of on-line Transparency Report with details of the three events
- Spreadsheet with summary of 17 SSO events with dates and corrective actions
- KDHE SSO reports (17 events)
- Listing of 20 "Trouble Lines" currently receiving enhanced maintenance
- Summary sheet from Service Line Warranties of America program

TRANSPARENCY REPORT

August 9, 2019

Water Pollution Control (WPC) helped a local plumber locate a sanitary service line at 326 Choctaw Street. ~~contacted the WPC.~~¹ WPC dye tested this line on August 5 and could not find where it entered the City sewer system. On August 8, WPC found the service line for 326 Choctaw Street was not connected to the sanitary sewer line, but to the storm drain.

Water Pollution Control has placed contaminated creek signs and asked that residents stay out of the water at 3-Mile Creek from 4th Street going east to the Missouri River until 326 Choctaw Street is connected to the City sewer system. The contaminated creek signs will be removed when sanitary sewer is no longer running into the storm drain and to 3-Mile Creek.

¹ Text corrected to match online notice



View

Edit

Clone content

Sanitary Sewer Overflow for Aug. 8, 2019

Water Pollution Control helped a local plumber locate a sanitary service line at 326 Choctaw Street. WPC dye-tested this line on August 5 and could not find where it entered the City sewer system. On August 8, WPC found that the service line for 326 Choctaw Street was not connected to the sanitary sewer line but to the storm drain.

Water Pollution Control has placed contaminated creek signs and would ask that residents stay out the water at Three Mile Creek from Fourth Street going east to the Missouri River until 326 Choctaw St. is connected to the City sewer system. The contaminated creek sign will be removed when sanitary sewer is no longer running into the storm drain and to Three Mile Creek.

Supporting Documents

 [Map of 326 Choctaw Street \(955 KB\)](#)

Share/Save through Social Media



CO
IN

24

lin

Pu

Mu

68

Hc

Mc

Lo

Le

Edit

[]



11 cu,b hci

ParcelS

Blue: Band_3

Leavenworth City Limits

0 0.02





TRANSPARENCY REPORT

August 29, 2019

August 26th, 2019, heavy rain caused a sanitary sewer manhole to overflow at 2nd Avenue and Thornton Street. This manhole overflowed for 81 minutes and flowed an estimated 24,400 gallons into the storm drain and into the nearby creek.

Water Pollution Control asked that residents stay out of this creek for a few days or until the contaminated creek signs are removed.



[View](#)[Edit](#)[Clone content](#)

KS Sanitary Sewer Overflow for Aug. 26, 2019

Heavy rain caused a sanitary sewer manhole to overflow at Second Avenue and Thornton Street. This manhole overflowed for 81 minutes and an estimated 24,400 gallons flowed into the storm drain and into the nearby creek. When the rain slowed, the manhole was no longer overflowing.

Water Pollution Control asks that residents stay out of the area marked with "contaminated creek" signs until the signs are removed.

Supporting Documents

 [Map of 2nd and Thornton SSO \(1 MB\)](#)

Share/Save through Social Media



CC
IN

24
line

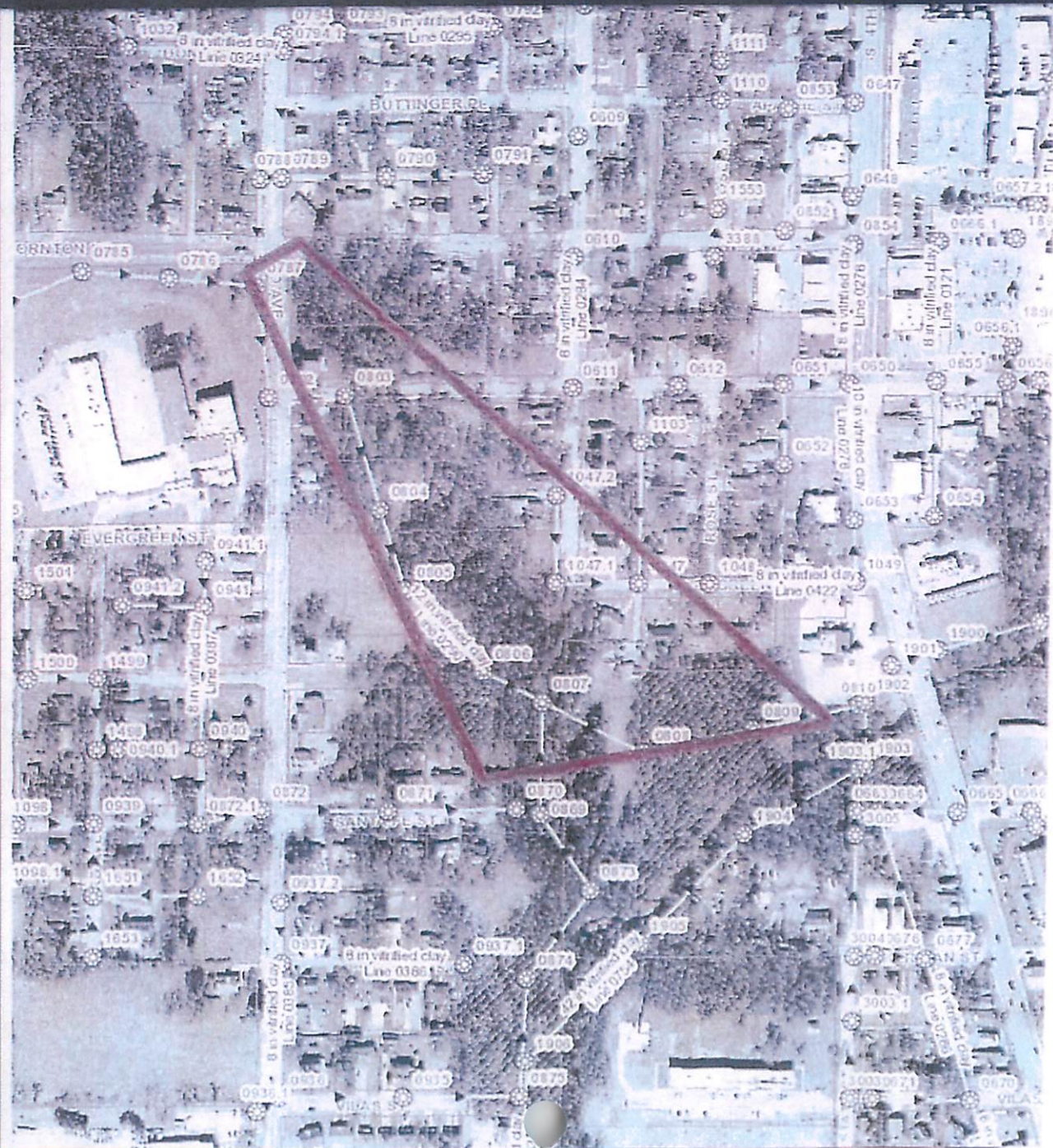
Pul
Mu

68:
Ho

Mc
Lo

Lec

Edit



TRANSPARENCY REPORT

December 30, 2019

On December 27, 2019 at 2:40 pm, a local plumber called Water Pollution Control (WPC) stating that a manhole was overflowing in the area of 838 Ottawa Street. When City crews responded to the call, they noticed the overflow out of manhole 0415. City crews jetted line and cleared obstruction and overflow was stopped at 3:30 pm. Due to this overflow, wastewater reached a nearby creek at this location down to 3-Mile Creek. WPC cleaned the area and put contaminated creek signs out. Water Pollution Control asked the public to stay out of the creek from 838 Ottawa south to 3-Mile Creek until contaminated creek signs were removed.



View

Edit

Revisions

Clone content

KS

Sanitary Sewer Overflow report for Dec. 27, 2019

On Dec. 27, 2019 at 2:40 p.m. Water Pollution Control staff responded to a call from a professional plumber regarding a sewage overflow at 838 Ottawa Street. Upon arrival, city staff noticed sewage coming from a manhole. Sewage on the ground was contained with absorbent material until the flush truck arrived and cleared the line. The overflow was stopped at 3:30 p.m. WPC cleaned the area and put out contaminated creek signs. The public is asked to stay out of the creek from 838 Ottawa Street south to Three Mile Creek, until contaminated creek signs are removed.

(see map)

UPDATE: As of Jan. 2, 2020, the creek has been tested for E. Coli and levels are within acceptable limits. Contaminated creek signs will be removed on 1/2/2020.



Supporting Documents

 [Map for SSO 27 December 2019 \(239 KB\)](#)

CO
IN

24
line

Pul

Mu

06!

Ho

Mc

Lo

Lex

Edit



SANITARY SEWAGE OVERFLOW REPORT

JULY 1 - DECEMBER 31, 2019

No.	Date	Address	Nature of Problem	SSO	Problem	Transparency Report	Cause	Solution
1	7/18/2019	1210 Spruce	Wastewater running into storm due to storm drain collapse	Y	CLT	No	Storm drain collapse	Contractor repair storm line and sanitary.
2	8/7/2019	326 Choctaw	Lateral tied into storm line	Y	PLT	Yes	Lateral connected to storm	Had plumber reconnect line to sanitary sewer.
3	8/8/2019	908 4th Avenue	Overflow from clean out	Y	PLT	No	Private line blockage	Got plumber to clear out line.
4	8/14/2019	0619-0627	Sewer backing up	Y	PLT	No	Private lateral blockage	Got plumber to clear out line.
5	8/26/2019	2nd Ave. & Thornton Street	Overflow from clean out	Y	CLT	Yes	Heavy rains roots	Flush truck used to remove roots.
6	8/30/2019	0195-0194	Black sludge comes up after heavy rains	Y	CLT	No	City line has grease	Flush truck used to remove grease.
7	10/11/2019	405 N. 11th Street	Sewer backing up in basement	Y	PLT	No	Private lateral blockage	Got plumber to clear out line.
8	10/21/2019	407 Olive Street	Sewer back up	Y	PLT	No	Private lateral blockage	Got plumber to clear out line.
9	10/29/2019	111 Shawnee Street	Sewage in lower level	Y	PLT	No	Private lateral blockage	Got plumber to clear out line.
10	11/3/2019	1216 Pottawatomie Street	Sewer back up	Y	CLT	No	City demolished house capped	City made repair to lateral.
11	11/11/2019	111 Shawnee Street	Sewage in lower level	Y	PLT	No	Private lateral blockage	Got plumber to clear out line.
12	11/4/2019	1900 5th Avenue	Sewer back up in garage	Y	PLT	No	Private line blockage	Got plumber to clear out line.
13	12/2/2019	1101 S. Broadway	Sewage in alley	Y	PLT	No	Private line blockage	Got plumber to clear out line.
14	12/3/2019	1034 Randolph Street	Sewage from cleanout	Y	PLT	No	Private line blockage	Got plumber to clear out line.
15	12/11/2019	1700 S. 5th Street	Water leaking into street	Y	PLT	No	Private line blockage	Got plumber to clear out line.
16	12/19/2019	306 Miami Street	Water in basement	Y	PLT	No	Private line blockage	Got plumber to clear out line.
17	12/27/2019	838 Ottawa Street	Water in basement and overflowing manhole	Y	CLT	Yes	City line blockage	Crews cleared obstruction with flush truck.

SSO	17
City Line Overflows	5 (1 Contractor)
Private Line Overflows	12

CLT - City Line Trouble
PLT - Private Line Trouble

**KANSAS DEPARTMENT OF HEALTH AND ENVIRONMENT
WASTEWATER INCIDENT REPORT FORM**

Definitions are available at <http://www.kdheks.gov/water/tech.html>

Collection System Bypass In-Plant Diversion Upset In-Plant Flow Through Spill

1. FACILITY NAME: City of Leavenworth Kansas Permit # M-M012-I001
 2. Within 24 hours of discovery, notify the KDHE Central Office (email – cseeds@kdheks.gov), (fax 785.296.0086), (telephone 785.296.5517) or your local KDHE district office. Written notification is required within 5 days of discovery. If the incident is not corrected within 5 days, send a written notification to KDHE indicating the status. This form is to be sent to KDHE when the incident ends.

KDHE Person Contacted: Chris Seeds Date: 7/19/19 Time: 8:38 am

3. Date Incident Discovered: 7/18/2019 Time: 10:00 am
 4. Date Incident Ended: 7/18/2019 Time: 1:00 pm

5. Total estimated gallons bypassed, spilled, or routed through failed equipment for all locations on this form: 20 gallons

6. If rainfall induced event, approximate inches of rainfall n/a
 If multiple locations listed below due to rain event, check here

7. Incident Location: (check all that apply)
- | | |
|--|---|
| <input type="checkbox"/> Plant | <input checked="" type="checkbox"/> City Collection Line (Line Break / Joint) |
| <input type="checkbox"/> Lift/Pump Station | <input type="checkbox"/> Private Sewer Line |
| <input type="checkbox"/> Peak Flow Basin | <input type="checkbox"/> Basement |
| <input type="checkbox"/> Manhole(s) | <input type="checkbox"/> Other (specify below) |

Identify **All** Incident Locations by Name, Street Address or Manhole Number as appropriate.
 J.f Denney was repairing a line at 1210 Spruce for the City. The upstream manhole is 0393 and the downstream manhole is 0395.

8. Cause of Incident:
- | | |
|--|--|
| <input type="checkbox"/> Intentional Bypass for Repair/Construction | <input type="checkbox"/> Equipment Failure |
| <input type="checkbox"/> Excessive Rainfall, Snow Melt | <input type="checkbox"/> Control System Failure |
| <input type="checkbox"/> Unplanned Construction Related Break | <input type="checkbox"/> Power Related Failure |
| <input checked="" type="checkbox"/> City Line Break (Not Construction Related) | <input type="checkbox"/> Operations Related Failure |
| <input type="checkbox"/> City Line Blockage | <input type="checkbox"/> Maintenance Related Failure |
| <input type="checkbox"/> Private Line Break | <input type="checkbox"/> Vandalism |
| <input type="checkbox"/> Private Line Blockage | <input type="checkbox"/> Other |
| <input type="checkbox"/> Lagoon High Level | |

Additional explanation of reason for Incident: (use additional page if necessary)
 While excavating for repairs the 18 inch storm line collapsed on the 8 inch sanitary causing the flow to back up and flow into the storm drain. This repair has a sanitary sandwiched between two storm lines.

9. Corrective Action, if any: (use additional page if necessary)
 The sanitary was repaired and we did not notice any waster water on the ground outside the storm box at the location. No water ran to any creek.

Name: Chuck Staples Date: 7/19/19
 Title: Superintendent Phone: 913-682-1090

When Completed, E-mail to: cseeds@kdheks.gov
 Kansas Department of Health & Environment – Attn: Chris Seeds

**KANSAS DEPARTMENT OF HEALTH AND ENVIRONMENT
WASTEWATER INCIDENT REPORT FORM**

Definitions are available at <http://www.kdheks.gov/water/tech.html>

Collection System Bypass In-Plant Diversion Upset In-Plant Flow Through Spill

1. FACILITY NAME: City of Leavenworth Kansas Permit # M-M012-I001
2. Within 24 hours of discovery, notify the KDHE Central Office (email – cseeds@kdheks.gov), (fax 785.296.0086), (telephone 785.296.5517) or your local KDHE district office. Written notification is required within 5 days of discovery. If the incident is not corrected within 5 days, send a written notification to KDHE indicating the status. This form is to be sent to KDHE when the incident ends.

KDHE Person Contacted: Chris Seeds Date: 8/9/19 Time: 10:46 am

3. Date Incident Discovered: 8/8/2019 Time: 11:14 am
4. Date Incident Ended: 8/8/2019 Time: 5:00 pm
5. Total estimated gallons bypassed, spilled, or routed through failed equipment for all locations on this form: 5 gallons
6. If rainfall induced event, approximate inches of rainfall n/a
If multiple locations listed below due to rain event, check here

7. Incident Location: (check all that apply)
- | | |
|--|--|
| <input type="checkbox"/> Plant | <input type="checkbox"/> City Collection Line (Line Break / Joint) |
| <input type="checkbox"/> Lift/Pump Station | <input checked="" type="checkbox"/> Private Sewer Line |
| <input type="checkbox"/> Peak Flow Basin | <input type="checkbox"/> Basement |
| <input type="checkbox"/> Manhole(s) | <input type="checkbox"/> Other (specify below) |

Identify **All** Incident Locations by Name, Street Address or Manhole Number as appropriate.
The resident at 908 4th Ave. called stating water was leaking from a clean out. This is a private line.

8. Cause of Incident:
- | | |
|---|--|
| <input type="checkbox"/> Intentional Bypass for Repair/Construction | <input type="checkbox"/> Equipment Failure |
| <input type="checkbox"/> Excessive Rainfall, Snow Melt | <input type="checkbox"/> Control System Failure |
| <input type="checkbox"/> Unplanned Construction Related Break | <input type="checkbox"/> Power Related Failure |
| <input type="checkbox"/> City Line Break (Not Construction Related) | <input type="checkbox"/> Operations Related Failure |
| <input type="checkbox"/> City Line Blockage | <input type="checkbox"/> Maintenance Related Failure |
| <input type="checkbox"/> Private Line Break | <input type="checkbox"/> Vandalism |
| <input checked="" type="checkbox"/> Private Line Blockage | <input type="checkbox"/> Other |
| <input type="checkbox"/> Lagoon High Level | |

Additional explanation of reason for Incident: (use additional page if necessary)
We checked the flow in manhole 0356 and had good flow,

9. Corrective Action, if any: (use additional page if necessary)
Our crew talked to the owner and informed them they needed to call a plumber. The plumber had the line opened around 5:00 pm.

Name: Chuck Staples Date: 8/9/19
Title: Superintendent Phone: 913-682-1090

When Completed, E-mail to: cseeds@kdheks.gov
Kansas Department of Health & Environment – Attn: Chris Seeds
Or Mail to: 1000 SW Jackson St., Suite 420, Topeka, KS 66612-1367
Fax 785.296.0086

KANSAS DEPARTMENT OF HEALTH AND ENVIRONMENT
WASTEWATER INCIDENT REPORT FORM

1 x 5 x 1

Definitions are available at <http://www.kdheks.gov/water/tech.html>

Collection System Bypass In-Plant Diversion Upset In-Plant Flow Through Spill

1. FACILITY NAME: City of Leavenworth Kansas Permit # M-M012-I001

2. Within 24 hours of discovery, notify the KDHE Central Office (email – cseeds@kdheks.gov), (fax 785.296.0086), (telephone 785.296.5517) or your local KDHE district office. Written notification is required within 5 days of discovery. If the incident is not corrected within 5 days, send a written notification to KDHE indicating the status. This form is to be sent to KDHE when the incident ends.

KDHE Person Contacted: Chris Seeds Date: 8/15/19 Time: 9:22 am

3. Date Incident Discovered: 8/14/2019 Time: 2:50 pm

4. Date Incident Ended: 8/14/2019 Time: 7:00 pm

5. Total estimated gallons bypassed, spilled, or routed through failed equipment for all locations on this form: 3 gallons(Contained in basement)

6. If rainfall induced event, approximate inches of rainfall n/a

If multiple locations listed below due to rain event, check here

7. Incident Location: (check all that apply)

- | | |
|--|--|
| <input type="checkbox"/> Plant | <input type="checkbox"/> City Collection Line (Line Break / Joint) |
| <input type="checkbox"/> Lift/Pump Station | <input checked="" type="checkbox"/> Private Sewer Line |
| <input type="checkbox"/> Peak Flow Basin | <input type="checkbox"/> Basement |
| <input type="checkbox"/> Manhole(s) | <input type="checkbox"/> Other (specify below) |

Identify **All** Incident Locations by Name, Street Address or Manhole Number as appropriate.
Mrs. Hare called stating that she had water backing up in her basement at 424 Young Street. The upstream manhole is 2015 and the downstream is 2014.

8. Cause of Incident:

- | | |
|---|--|
| <input type="checkbox"/> Intentional Bypass for Repair/Construction | <input type="checkbox"/> Equipment Failure |
| <input type="checkbox"/> Excessive Rainfall, Snow Melt | <input type="checkbox"/> Control System Failure |
| <input type="checkbox"/> Unplanned Construction Related Break | <input type="checkbox"/> Power Related Failure |
| <input type="checkbox"/> City Line Break (Not Construction Related) | <input type="checkbox"/> Operations Related Failure |
| <input type="checkbox"/> City Line Blockage | <input type="checkbox"/> Maintenance Related Failure |
| <input type="checkbox"/> Private Line Break | <input type="checkbox"/> Vandalism |
| <input checked="" type="checkbox"/> Private Line Blockage | <input type="checkbox"/> Other |
| <input type="checkbox"/> Lagoon High Level | |

Additional explanation of reason for Incident: (use additional page if necessary)
Upon arrival we checked both manholes with no water backing up. We rodded our line for 383 feet with no issues.

9. Corrective Action, if any: (use additional page if necessary)

We talked to the resident and was shown the water on the floor. The apartment manage was contacted and she said a plumber had been called. The line was open around 7:00 pm

Name: Chuck Staples Date: 8/15/19

Title: Superintendent Phone: 913-682-1090

When Completed, E-mail to: cseeds@kdheks.gov
Kansas Department of Health & Environment – Attn: Chris Seeds

**KANSAS DEPARTMENT OF HEALTH AND ENVIRONMENT
WASTEWATER INCIDENT REPORT FORM**

Definitions are available at <http://www.kdheks.gov/water/tech.html>

Collection System Bypass In-Plant Diversion Upset In-Plant Flow Through Spill

1. FACILITY NAME: City of Leavenworth Kansas Permit # M-M012-I001
 2. Within 24 hours of discovery, notify the KDHE Central Office (email – cseeds@kdheks.gov), (fax 785.296.0086), (telephone 785.296.5517) or your local KDHE district office. Written notification is required within 5 days of discovery. If the incident is not corrected within 5 days, send a written notification to KDHE indicating the status. This form is to be sent to KDHE when the incident ends.

KDHE Person Contacted: Chris Seeds Date: 8/26/19 Time: 4:03 pm

3. Date Incident Discovered: 8/26/2019 Time: 10:45 am

4. Date Incident Ended: 8/26/2019 Time: 12:06 pm

5. Total estimated gallons bypassed, spilled, or routed through failed equipment for all locations on this form: 24,400

6. If rainfall induced event, approximate inches of rainfall n/a

If multiple locations listed below due to rain event, check here

7. Incident Location: (check all that apply)

- | | |
|--|--|
| <input type="checkbox"/> Plant | <input type="checkbox"/> City Collection Line (Line Break / Joint) |
| <input type="checkbox"/> Lift/Pump Station | <input type="checkbox"/> Private Sewer Line |
| <input type="checkbox"/> Peak Flow Basin | <input type="checkbox"/> Basement |
| <input checked="" type="checkbox"/> Manhole(s) | <input type="checkbox"/> Other (specify below) |

Identify **All** Incident Locations by Name, Street Address or Manhole Number as appropriate.

At 10:45 this morning manhole 0787 was overflowing at 2nd Ave and Thornton Street.

8. Cause of Incident:

- | | |
|---|--|
| <input type="checkbox"/> Intentional Bypass for Repair/Construction | <input type="checkbox"/> Equipment Failure |
| <input checked="" type="checkbox"/> Excessive Rainfall, Snow Melt | <input type="checkbox"/> Control System Failure |
| <input type="checkbox"/> Unplanned Construction Related Break | <input type="checkbox"/> Power Related Failure |
| <input type="checkbox"/> City Line Break (Not Construction Related) | <input type="checkbox"/> Operations Related Failure |
| <input type="checkbox"/> City Line Blockage | <input type="checkbox"/> Maintenance Related Failure |
| <input type="checkbox"/> Private Line Break | <input type="checkbox"/> Vandalism |
| <input type="checkbox"/> Private Line Blockage | <input type="checkbox"/> Other |
| <input type="checkbox"/> Lagoon High Level | |

Additional explanation of reason for Incident: (use additional page if necessary)

Due to heavy rain the manhole overflowed at 10:45 am.

9. Corrective Action, if any: (use additional page if necessary)

At 12:06 pm the water had receded and was no longer overflowing.

Name: Chuck Staples

Date: 8/26/19

Title: Superintendent

Phone: 913-682-1090

When Completed, E-mail to: cseeds@kdheks.gov

Kansas Department of Health & Environment – Attn: Chris Seeds

Or Mail to: 1000 SW Jackson St., Suite 420, Topeka, KS 66612-1367

Fax 785.296.0086

(copy)

~~5.1.1~~
5.1.1

**KANSAS DEPARTMENT OF HEALTH AND ENVIRONMENT
WASTEWATER INCIDENT REPORT FORM**

Definitions are available at <http://www.kdheks.gov/water/tech.html>

Collection System Bypass In-Plant Diversion Upset In-Plant Flow Through Spill

1. FACILITY NAME: City of Leavenworth Kansas Permit # M-M012-1001

2. Within 24 hours of discovery, notify the KDHE Central Office (email – cseeds@kdheks.gov), (fax 785.296.0086), (telephone 785.296.5517) or your local KDHE district office. Written notification is required within 5 days of discovery. If the incident is not corrected within 5 days, send a written notification to KDHE indicating the status. This form is to be sent to KDHE when the incident ends.

KDHE Person Contacted: Chris Seeds Date: 9/3/2019 Time: 7:48 am

3. Date Incident Discovered: 8/30/2019 Time: 1:20 pm

4. Date Incident Ended: 8/30/2019 Time: 1:52 pm

5. Total estimated gallons bypassed, spilled, or routed through failed equipment for all locations on this form: 20 Gallons

6. If rainfall induced event, approximate inches of rainfall n/a
If multiple locations listed below due to rain event, check here

7. Incident Location: (check all that apply)

<input type="checkbox"/> Plant	<input type="checkbox"/> City Collection Line (Line Break / Joint)
<input type="checkbox"/> Lift/Pump Station	<input type="checkbox"/> Private Sewer Line
<input type="checkbox"/> Peak Flow Basin	<input checked="" type="checkbox"/> Basement
<input type="checkbox"/> Manhole(s)	<input type="checkbox"/> Other (specify below)

Identify **All** Incident Locations by Name, Street Address or Manhole Number as appropriate.
721 Osage st Leavenworth Kansas. sewage in basement floor drains of house.

8. Cause of Incident:

<input type="checkbox"/> Intentional Bypass for Repair/Construction	<input type="checkbox"/> Equipment Failure
<input type="checkbox"/> Excessive Rainfall, Snow Melt	<input type="checkbox"/> Control System Failure
<input type="checkbox"/> Unplanned Construction Related Break	<input type="checkbox"/> Power Related Failure
<input type="checkbox"/> City Line Break (Not Construction Related)	<input type="checkbox"/> Operations Related Failure
<input checked="" type="checkbox"/> City Line Blockage	<input type="checkbox"/> Maintenance Related Failure
<input type="checkbox"/> Private Line Break	<input type="checkbox"/> Vandalism
<input type="checkbox"/> Private Line Blockage	<input type="checkbox"/> Other
<input type="checkbox"/> Lagoon High Level	

Additional explanation of reason for Incident: (use additional page if necessary)
Grease was in line.

9. Corrective Action, if any: (use additional page if necessary)
City crews use flush truck (3374) to clear grease from line.

Name: Chuck Staples Date: 9/1/2019
Title: Superintendent Phone: 913-682-1090

When Completed, E-mail to: cseeds@kdheks.gov
Kansas Department of Health & Environment – Attn: Chris Seeds
Or Mail to: 1000 SW Jackson St., Suite 420, Topeka, KS 66612-1367
Fax 785.296.0086

**KANSAS DEPARTMENT OF HEALTH AND ENVIRONMENT
WASTEWATER INCIDENT REPORT FORM**

Definitions are available at <http://www.kdheks.gov/water/tech.html>

Collection System Bypass In-Plant Diversion Upset In-Plant Flow Through Spill

1. FACILITY NAME: City of Leavenworth Kansas Permit # M-M012-I001

2. Within 24 hours of discovery, notify the KDHE Central Office (email – cseeds@kdheks.gov), (fax 785.296.0086), (telephone 785.296.5517) or your local KDHE district office. Written notification is required within 5 days of discovery. If the incident is not corrected within 5 days, send a written notification to KDHE indicating the status. This form is to be sent to KDHE when the incident ends.

KDHE Person Contacted: Chris Seeds Date: 9/11/19 Time: 10:28 am

3. Date Incident Discovered: 8/7/2019 Time: 3:00 pm

4. Date Incident Ended: 9/6/2019 Time: 3:00 pm

5. Total estimated gallons bypassed, spilled, or routed through failed equipment for all locations on this form: _____

6. If rainfall induced event, approximate inches of rainfall n/a

If multiple locations listed below due to rain event, check here

7. Incident Location: (check all that apply)

- | | |
|--|--|
| <input type="checkbox"/> Plant | <input type="checkbox"/> City Collection Line (Line Break / Joint) |
| <input type="checkbox"/> Lift/Pump Station | <input checked="" type="checkbox"/> Private Sewer Line |
| <input type="checkbox"/> Peak Flow Basin | <input type="checkbox"/> Basement |
| <input type="checkbox"/> Manhole(s) | <input checked="" type="checkbox"/> Other (specify below) |

Identify **All** Incident Locations by Name, Street Address or Manhole Number as appropriate.

326 Choctaw St. city of Leavenworth Kansas

8. Cause of Incident:

- | | |
|---|--|
| <input type="checkbox"/> Intentional Bypass for Repair/Construction | <input type="checkbox"/> Equipment Failure |
| <input type="checkbox"/> Excessive Rainfall, Snow Melt | <input type="checkbox"/> Control System Failure |
| <input type="checkbox"/> Unplanned Construction Related Break | <input type="checkbox"/> Power Related Failure |
| <input type="checkbox"/> City Line Break (Not Construction Related) | <input type="checkbox"/> Operations Related Failure |
| <input type="checkbox"/> City Line Blockage | <input type="checkbox"/> Maintenance Related Failure |
| <input type="checkbox"/> Private Line Break | <input type="checkbox"/> Vandalism |
| <input type="checkbox"/> Private Line Blockage | <input checked="" type="checkbox"/> Other |
| <input type="checkbox"/> Lagoon High Level | |

Additional explanation of reason for Incident: (use additional page if necessary)

The bulding was having sewer issues. City crews came out to CCTV and dye building. found building was connected to Storm Sewer.

9. Corrective Action, if any: (use additional page if necessary)

Owner was made aware and asked to immediatly stop using facilities untill repairs were made to connect to sanitary main. They Hired J.F. Denney to make repairs and are completed.

Name: Tim Guardado Date: 9/11/2019

Title: Superintendent Phone 913-682-1090

When Completed, E-mail to: cseeds@kdheks.gov

Kansas Department of Health & Environment – Attn: Chris Seeds
Or Mail to: 1000 SW Jackson St., Suite 420, Topeka , KS 66612-1367

KANSAS DEPARTMENT OF HEALTH AND ENVIRONMENT
WASTEWATER INCIDENT REPORT FORM

5.1.05
①

Definitions are available at <http://www.kdheks.gov/water/tech.html>

Collection System Bypass In-Plant Diversion Upset In-Plant Flow Through Spill

1. FACILITY NAME: City of Leavenworth Kansas Permit # M-M012-I001
2. Within 24 hours of discovery, notify the KDHE Central Office (email – cseeds@kdheks.gov), (fax 785.296.0086), (telephone 785.296.5517) or your local KDHE district office. Written notification is required within 5 days of discovery. If the incident is not corrected within 5 days, send a written notification to KDHE indicating the status. This form is to be sent to KDHE when the incident ends.

KDHE Person Contacted: Chris Seeds Date: 10/14/19 Time: 8:37 am

3. Date Incident Discovered: 10/11/2019 Time: 3:40 pm
4. Date Incident Ended: 10/11/2019 Time: 4:00 pm
5. Total estimated gallons bypassed, spilled, or routed through failed equipment for all locations on this form: 20 gallons
6. If rainfall induced event, approximate inches of rainfall n/a
If multiple locations listed below due to rain event, check here

7. Incident Location: (check all that apply)
- | | |
|--|--|
| <input type="checkbox"/> Plant | <input type="checkbox"/> City Collection Line (Line Break / Joint) |
| <input type="checkbox"/> Lift/Pump Station | <input type="checkbox"/> Private Sewer Line |
| <input type="checkbox"/> Peak Flow Basin | <input checked="" type="checkbox"/> Basement |
| <input type="checkbox"/> Manhole(s) | <input type="checkbox"/> Other (specify below) |

Identify **All** Incident Locations by Name, Street Address or Manhole Number as appropriate.
405 N. 11st leavenworth kansas. Water was visible around basement floor drain. Water did not exit the structure.

8. Cause of Incident:
- | | |
|---|--|
| <input type="checkbox"/> Intentional Bypass for Repair/Construction | <input type="checkbox"/> Equipment Failure |
| <input type="checkbox"/> Excessive Rainfall, Snow Melt | <input type="checkbox"/> Control System Failure |
| <input type="checkbox"/> Unplanned Construction Related Break | <input type="checkbox"/> Power Related Failure |
| <input type="checkbox"/> City Line Break (Not Construction Related) | <input type="checkbox"/> Operations Related Failure |
| <input type="checkbox"/> City Line Blockage | <input type="checkbox"/> Maintenance Related Failure |
| <input type="checkbox"/> Private Line Break | <input type="checkbox"/> Vandalism |
| <input checked="" type="checkbox"/> Private Line Blockage | <input type="checkbox"/> Other |
| <input type="checkbox"/> Lagoon High Level | |

Additional explanation of reason for Incident: (use additional page if necessary)
Private line blockage. City main was checked and had no problems.

9. Corrective Action, if any: (use additional page if necessary)
Homeowners got plumbers to resolve issue.

Name: Tim Guardadp Date: 10/14/2019
Title: Superintendent Phone: 913-682-1090

When Completed, E-mail to: cseeds@kdheks.gov
Kansas Department of Health & Environment – Attn: Chris Seeds
Or Mail to: 1000 SW Jackson St., Suite 420, Topeka, KS 66612-1367
Fax 785.296.0086

5.5.2019

KANSAS DEPARTMENT OF HEALTH AND ENVIRONMENT WASTEWATER INCIDENT REPORT FORM

Definitions are available at <http://www.kdheks.gov/water/tech.html>

Collection System Bypass In-Plant Diversion Upset In-Plant Flow Through Spill

1. FACILITY NAME: City of Leavenworth Kansas Permit # M-M012-I001
2. Within 24 hours of discovery, notify the KDHE Central Office (email – cseeds@kdheks.gov), (fax 785.296.0086), (telephone 785.296.5517) or your local KDHE district office. Written notification is required within 5 days of discovery. If the incident is not corrected within 5 days, send a written notification to KDHE indicating the status. This form is to be sent to KDHE when the incident ends.

KDHE Person Contacted: Chris Seeds Date: 10/24/15 Time: 10:41 am

3. Date Incident Discovered: 10/21/2019 Time: 6:15 PM
4. Date Incident Ended: 10/25/2019 Time: 8:00 PM
5. Total estimated gallons bypassed, spilled, or routed through failed equipment for all locations on this form: Unknown 20 Gallons
6. If rainfall induced event, approximate inches of rainfall _____

If multiple locations listed below due to rain event, check here

7. Incident Location: (check all that apply)

<input type="checkbox"/> Plant	<input type="checkbox"/> City Collection Line (Line Break / Joint)
<input type="checkbox"/> Lift/Pump Station	<input checked="" type="checkbox"/> Private Sewer Line
<input type="checkbox"/> Peak Flow Basin	<input type="checkbox"/> Basement
<input type="checkbox"/> Manhole(s)	<input type="checkbox"/> Other (specify below)

Identify **All** Incident Locations by Name, Street Address or Manhole Number as appropriate.

407 Olive St. Leavenworth KS

8. Cause of Incident:

<input type="checkbox"/> Intentional Bypass for Repair/Construction	<input type="checkbox"/> Equipment Failure
<input type="checkbox"/> Excessive Rainfall, Snow Melt	<input type="checkbox"/> Control System Failure
<input type="checkbox"/> Unplanned Construction Related Break	<input type="checkbox"/> Power Related Failure
<input type="checkbox"/> City Line Break (Not Construction Related)	<input type="checkbox"/> Operations Related Failure
<input type="checkbox"/> City Line Blockage	<input type="checkbox"/> Maintenance Related Failure
<input type="checkbox"/> Private Line Break	<input type="checkbox"/> Vandalism
<input checked="" type="checkbox"/> Private Line Blockage	<input type="checkbox"/> Other
<input type="checkbox"/> Lagoon High Level	

Additional explanation of reason for Incident: (use additional page if necessary)

Sewage came out through the house cleanout in the back yard. Private lateral was blocked.

9. Corrective Action, if any: (use additional page if necessary)
Homeowner had plumber clear line.

Name: Tim Guardado Date: 10/24/19
 Title: Acting Superintendent Phone: 913-682-1090

When Completed, E-mail to: cseeds@kdheks.gov
 Kansas Department of Health & Environment – Attn: Chris Seeds
 Or Mail to: 1000 SW Jackson St., Suite 420, Topeka, KS 66612-1367
 Fax 785.296.0086

KANSAS DEPARTMENT OF HEALTH AND ENVIRONMENT
WASTEWATER INCIDENT REPORT FORM

Definitions are available at <http://www.kdheks.gov/water/tech.html>

Collection System Bypass In-Plant Diversion Upset In-Plant Flow Through Spill

1. FACILITY NAME: City of Leavenworth Kansas Permit # M-M012-I001

2. Within 24 hours of discovery, notify the KDHE Central Office (email – cseeds@kdheks.gov), (fax 785.296.0086), (telephone 785.296.5517) or your local KDHE district office. Written notification is required within 5 days of discovery. If the incident is not corrected within 5 days, send a written notification to KDHE indicating the status. This form is to be sent to KDHE when the incident ends.

KDHE Person Contacted: Chris Seeds Date: 10/29/19 Time: 3:18 pm

3. Date Incident Discovered: 10/29/2019 Time: 7:29

4. Date Incident Ended: 10/29/2019 Time: 1:57 pm

5. Total estimated gallons bypassed, spilled, or routed through failed equipment for all locations on this form: 60 Gallons

6. If rainfall induced event, approximate inches of rainfall n/a

If multiple locations listed below due to rain event, check here

7. Incident Location: (check all that apply)

- Plant
- Lift/Pump Station
- Peak Flow Basin
- Manhole(s)
- City Collection Line (Line Break / Joint)
- Private Sewer Line
- Basement
- Other (specify below)

Identify **All** Incident Locations by Name, Street Address or Manhole Number as appropriate.
111 Shawnee St. this is apartments the lower level had some water in the hallways.

8. Cause of Incident:

- Intentional Bypass for Repair/Construction
- Excessive Rainfall, Snow Melt
- Unplanned Construction Related Break
- City Line Break (Not Construction Related)
- City Line Blockage
- Private Line Break
- Private Line Blockage
- Lagoon High Level
- Equipment Failure
- Control System Failure
- Power Related Failure
- Operations Related Failure
- Maintenance Related Failure
- Vandalism
- Other

Additional explanation of reason for Incident: (use additional page if necessary)
Private lateral was blocked. Plumber from J.F. Denney cleared blockage.

9. Corrective Action, if any: (use additional page if necessary)

Name: Tim Guardado Date: 10.29.2019
Title: Acting Superintendent Phone: 913-682-1090

When Completed, E-mail to: cseeds@kdheks.gov
Kansas Department of Health & Environment – Attn: Chris Seeds
Or Mail to: 1000 SW Jackson St., Suite 420, Topeka, KS 66612-1367
Fax 785.296.0086

**KANSAS DEPARTMENT OF HEALTH AND ENVIRONMENT
WASTEWATER INCIDENT REPORT FORM**

Definitions are available at <http://www.kdheks.gov/water/tech.html>

Collection System Bypass In-Plant Diversion Upset In-Plant Flow Through Spill

1. FACILITY NAME: City of Leavenworth Kansas Permit # M-M012-I001

2. Within 24 hours of discovery, notify the KDHE Central Office (email – cseeds@kdheks.gov), (fax 785.296.0086), (telephone 785.296.5517) or your local KDHE district office. Written notification is required within 5 days of discovery. If the incident is not corrected within 5 days, send a written notification to KDHE indicating the status. This form is to be sent to KDHE when the incident ends.

KDHE Person Contacted: Chris Seeds Date: 11/12/19 Time: 8:45 am

3. Date Incident Discovered: 11/11/2019 Time: 9:00 am

4. Date Incident Ended: 11/11/2019 Time: 10:00 am

5. Total estimated gallons bypassed, spilled, or routed through failed equipment for all locations on this form: 60 Gallons

6. If rainfall induced event, approximate inches of rainfall _____

If multiple locations listed below due to rain event, check here

7. Incident Location: (check all that apply)

- | | |
|--|--|
| <input type="checkbox"/> Plant | <input type="checkbox"/> City Collection Line (Line Break / Joint) |
| <input type="checkbox"/> Lift/Pump Station | <input checked="" type="checkbox"/> Private Sewer Line |
| <input type="checkbox"/> Peak Flow Basin | <input type="checkbox"/> Basement |
| <input type="checkbox"/> Manhole(s) | <input type="checkbox"/> Other (specify below) |

Identify **All** Incident Locations by Name, Street Address or Manhole Number as appropriate.

111 Shawnee St. Leavenworth Ks. Cody Plaza. High rise hotel bottom floor started to flood.

8. Cause of Incident:

- | | |
|---|--|
| <input type="checkbox"/> Intentional Bypass for Repair/Construction | <input type="checkbox"/> Equipment Failure |
| <input type="checkbox"/> Excessive Rainfall, Snow Melt | <input type="checkbox"/> Control System Failure |
| <input type="checkbox"/> Unplanned Construction Related Break | <input type="checkbox"/> Power Related Failure |
| <input type="checkbox"/> City Line Break (Not Construction Related) | <input type="checkbox"/> Operations Related Failure |
| <input type="checkbox"/> City Line Blockage | <input type="checkbox"/> Maintenance Related Failure |
| <input type="checkbox"/> Private Line Break | <input type="checkbox"/> Vandalism |
| <input checked="" type="checkbox"/> Private Line Blockage | <input type="checkbox"/> Other |
| <input type="checkbox"/> Lagoon High Level | |

Additional explanation of reason for Incident: (use additional page if necessary)

Plumber J. F. Denney says they pulled roots out of the private lateral running from building.

9. Corrective Action, if any: (use additional page if necessary)

Plumber informed them line needs to be CCTV'd and repaired as necessary.

Name: Tim Guardado Date: 11/12/19

Title: Acting Superintendent Phone: 913-682-1090

When Completed, E-mail to: cseeds@kdheks.gov

Kansas Department of Health & Environment – Attn: Chris Seeds

Or Mail to: 1000 SW Jackson St., Suite 420, Topeka, KS 66612-1367

Fax 785.296.0086

**KANSAS DEPARTMENT OF HEALTH AND ENVIRONMENT
WASTEWATER INCIDENT REPORT FORM**

Definitions are available at <http://www.kdheks.gov/water/tech.html>

Collection System Bypass In-Plant Diversion Upset In-Plant Flow Through Spill

1. FACILITY NAME: City of Leavenworth Kansas Permit # M-M012-I001

2. Within 24 hours of discovery, notify the KDHE Central Office (email – cseeds@kdheks.gov), (fax 785.296.0086), (telephone 785.296.5517) or your local KDHE district office. Written notification is required within 5 days of discovery. If the incident is not corrected within 5 days, send a written notification to KDHE indicating the status. This form is to be sent to KDHE when the incident ends.

KDHE Person Contacted: Chris Seeds Date: 11/12/2019 Time: 10:25 am

3. Date Incident Discovered: 11/23/2019 Time: 10:47 am

4. Date Incident Ended: 11/23/2019 Time: 11:40 am

5. Total estimated gallons bypassed, spilled, or routed through failed equipment for all locations on this form: Unknown

6. If rainfall induced event, approximate inches of rainfall _____

If multiple locations listed below due to rain event, check here

7. Incident Location: (check all that apply)

- | | |
|--|--|
| <input type="checkbox"/> Plant | <input type="checkbox"/> City Collection Line (Line Break / Joint) |
| <input type="checkbox"/> Lift/Pump Station | <input type="checkbox"/> Private Sewer Line |
| <input type="checkbox"/> Peak Flow Basin | <input checked="" type="checkbox"/> Basement |
| <input type="checkbox"/> Manhole(s) | <input type="checkbox"/> Other (specify below) |

Identify **All** Incident Locations by Name, Street Address or Manhole Number as appropriate.

1216 Pottawatomie St Leavenworth KS 66048

8. Cause of Incident:

- | | |
|--|--|
| <input type="checkbox"/> Intentional Bypass for Repair/Construction | <input type="checkbox"/> Equipment Failure |
| <input type="checkbox"/> Excessive Rainfall, Snow Melt | <input type="checkbox"/> Control System Failure |
| <input checked="" type="checkbox"/> Unplanned Construction Related Break | <input type="checkbox"/> Power Related Failure |
| <input type="checkbox"/> City Line Break (Not Construction Related) | <input type="checkbox"/> Operations Related Failure |
| <input type="checkbox"/> City Line Blockage | <input type="checkbox"/> Maintenance Related Failure |
| <input type="checkbox"/> Private Line Break | <input type="checkbox"/> Vandalism |
| <input checked="" type="checkbox"/> Private Line Blockage | <input type="checkbox"/> Other |
| <input type="checkbox"/> Lagoon High Level | |

Additional explanation of reason for Incident: (use additional page if necessary)

Sewage in basement amount unknown as homeowner had pictures and limited access to basement.

9. Corrective Action, if any: (use additional page if necessary)

City demolished house next door and the two houses were tied into one private line. City has assumed responsibility and is making necessary repairs to home lateral.

Name: Tim Guardado

Date: 11/12/2019

Title: Acting Superintendent

Phone: 913-682-1090

When Completed, E-mail to: cseeds@kdheks.gov

Kansas Department of Health & Environment – Attn: Chris Seeds

Or Mail to: 1000 SW Jackson St., Suite 420, Topeka, KS 66612-1367

Fax 785.296.0086

KANSAS DEPARTMENT OF HEALTH AND ENVIRONMENT
WASTEWATER INCIDENT REPORT FORM

Copy

Definitions are available at <http://www.kdheks.gov/water/tech.html>

Collection System Bypass In-Plant Diversion Upset In-Plant Flow Through Spill

1. FACILITY NAME: Leavenworth, City of Kansas Permit # M-MO12-IO01
2. Within 24 hours of discovery, notify the KDHE Central Office (email – cseeds@kdheks.gov), (fax 785.296.0086), (telephone 785.296.5517) or your local KDHE district office. Written notification is required within 5 days of discovery. If the incident is not corrected within 5 days, send a written notification to KDHE indicating the status. This form is to be sent to KDHE when the incident ends.

KDHE Person Contacted: Chris Seeds Date: 11/4/2019 Time: 12:55 pm

3. Date Incident Discovered: 11/4/2019 Time: 12:30 pm
4. Date Incident Ended: 11/25/2019 Time: 2:17 pm
5. Total estimated gallons bypassed, spilled, or routed through failed equipment for all locations on this form: 10 gallons
6. If rainfall induced event, approximate inches of rainfall n/a
If multiple locations listed below due to rain event, check here

7. Incident Location: (check all that apply)
- | | |
|--|--|
| <input type="checkbox"/> Plant | <input type="checkbox"/> City Collection Line (Line Break / Joint) |
| <input type="checkbox"/> Lift/Pump Station | <input type="checkbox"/> Private Sewer Line |
| <input type="checkbox"/> Peak Flow Basin | <input type="checkbox"/> Basement |
| <input type="checkbox"/> Manhole(s) | <input checked="" type="checkbox"/> Other (specify below) |

Identify **All** Incident Locations by Name, Street Address or Manhole Number as appropriate.
1900 5th Ave leavenworth KS. According to home owner in backed up in garage but has drained.

8. Cause of Incident:
- | | |
|---|--|
| <input type="checkbox"/> Intentional Bypass for Repair/Construction | <input type="checkbox"/> Equipment Failure |
| <input type="checkbox"/> Excessive Rainfall, Snow Melt | <input type="checkbox"/> Control System Failure |
| <input type="checkbox"/> Unplanned Construction Related Break | <input type="checkbox"/> Power Related Failure |
| <input type="checkbox"/> City Line Break (Not Construction Related) | <input type="checkbox"/> Operations Related Failure |
| <input type="checkbox"/> City Line Blockage | <input type="checkbox"/> Maintenance Related Failure |
| <input type="checkbox"/> Private Line Break | <input type="checkbox"/> Vandalism |
| <input checked="" type="checkbox"/> Private Line Blockage | <input type="checkbox"/> Other |
| <input type="checkbox"/> Lagoon High Level | |

Additional explanation of reason for Incident: (use additional page if necessary)
Private line blockage. Homeowner has been in contact with water dept as they bored a new line in area. Water dept says they didn't go through his line. He would have to make the repair.

9. Corrective Action, if any: (use additional page if necessary)
Home owner had Bob Hamilton Plumbing repair his line.

Name: Tim Guardado Date: 11/25/2019
Title: Acting Superintendent Phone: 913-682-1090

When Completed, E-mail to: cseeds@kdheks.gov
Kansas Department of Health & Environment – Attn: Chris Seeds
Or Mail to: 1000 SW Jackson St., Suite 420, Topeka, KS 66612-1367
Fax 785.296.0086

5-1-1

KANSAS DEPARTMENT OF HEALTH AND ENVIRONMENT
WASTEWATER INCIDENT REPORT FORM

Definitions are available at <http://www.kdheks.gov/water/tech.html>

Collection System Bypass In-Plant Diversion Upset In-Plant Flow Through Spill

1. FACILITY NAME: City of Leavenworth Kansas Permit # M-M012-I001

2. Within 24 hours of discovery, notify the KDHE Central Office (email – cseeds@kdheks.gov), (fax 785.296.0086), (telephone 785.296.5517) or your local KDHE district office. Written notification is required within 5 days of discovery. If the incident is not corrected within 5 days, send a written notification to KDHE indicating the status. This form is to be sent to KDHE when the incident ends.

KDHE Person Contacted: Chris Seeds Date: 12/2/19 Time: 2:10 pm

3. Date Incident Discovered: 12/2/2019 Time: 10:00 am

4. Date Incident Ended: 12/2/2019 Time: 11:35 am

5. Total estimated gallons bypassed, spilled, or routed through failed equipment for all locations on this form: 15 Gallons

6. If rainfall induced event, approximate inches of rainfall _____

If multiple locations listed below due to rain event, check here

7. Incident Location: (check all that apply)

- Plant
- Lift/Pump Station
- Peak Flow Basin
- Manhole(s)
- City Collection Line (Line Break / Joint)
- Private Sewer Line
- Basement
- Other (specify below)

Identify **All** Incident Locations by Name, Street Address or Manhole Number as appropriate.

1101 S. Broadway.

8. Cause of Incident:

- Intentional Bypass for Repair/Construction
- Excessive Rainfall, Snow Melt
- Unplanned Construction Related Break
- City Line Break (Not Construction Related)
- City Line Blockage
- Private Line Break
- Private Line Blockage
- Lagoon High Level
- Equipment Failure
- Control System Failure
- Power Related Failure
- Operations Related Failure
- Maintenance Related Failure
- Vandalism
- Other

Additional explanation of reason for Incident: (use additional page if necessary)

Sewage released from private cleanout. Plumber opened cleanout to clean line.

9. Corrective Action, if any: (use additional page if necessary)

Plumber cleared line and city crews assisted clean up around cleanout and street.

Name: Tim Guardado Date: 12/02/2019

Title: Superintendent Phone: 913-682-1090

When Completed, E-mail to: cseeds@kdheks.gov

Kansas Department of Health & Environment – Attn: Chris Seeds
Or Mail to: 1000 SW Jackson St., Suite 420, Topeka, KS 66612-1367
Fax 785.296.0086

KANSAS DEPARTMENT OF HEALTH AND ENVIRONMENT
WASTEWATER INCIDENT REPORT FORM

Definitions are available at <http://www.kdheks.gov/water/tech.html>

- Collection System Bypass In-Plant Diversion Upset In-Plant Flow Through Spill

1. FACILITY NAME: Leavenworth, City of Kansas Permit # M-MO12-IO01
 2. Within 24 hours of discovery, notify the KDHE Central Office (email – cseeds@kdheks.gov), (fax 785.296.0086), (telephone 785.296.5517) or your local KDHE district office. Written notification is required within 5 days of discovery. If the incident is not corrected within 5 days, send a written notification to KDHE indicating the status. This form is to be sent to KDHE when the incident ends.

KDHE Person Contacted: Chris Seeds Date: 12/5/19 Time: 8:32 am

3. Date Incident Discovered: 12/3/2019 Time: 1:25 pm
 4. Date Incident Ended: 12/3/2019 Time: 4:20 pm

5. Total estimated gallons bypassed, spilled, or routed through failed equipment for all locations on this form: 10 Gallons

6. If rainfall induced event, approximate inches of rainfall n/a

If multiple locations listed below due to rain event, check here

7. Incident Location: (check all that apply)
- | | |
|--|--|
| <input type="checkbox"/> Plant | <input type="checkbox"/> City Collection Line (Line Break / Joint) |
| <input type="checkbox"/> Lift/Pump Station | <input checked="" type="checkbox"/> Private Sewer Line |
| <input type="checkbox"/> Peak Flow Basin | <input type="checkbox"/> Basement |
| <input type="checkbox"/> Manhole(s) | <input type="checkbox"/> Other (specify below) |

Identify **All** Incident Locations by Name, Street Address or Manhole Number as appropriate.
1034 Randolph St Leavenworth

8. Cause of Incident:
- | | |
|---|--|
| <input type="checkbox"/> Intentional Bypass for Repair/Construction | <input type="checkbox"/> Equipment Failure |
| <input type="checkbox"/> Excessive Rainfall, Snow Melt | <input type="checkbox"/> Control System Failure |
| <input type="checkbox"/> Unplanned Construction Related Break | <input type="checkbox"/> Power Related Failure |
| <input type="checkbox"/> City Line Break (Not Construction Related) | <input type="checkbox"/> Operations Related Failure |
| <input type="checkbox"/> City Line Blockage | <input type="checkbox"/> Maintenance Related Failure |
| <input type="checkbox"/> Private Line Break | <input type="checkbox"/> Vandalism |
| <input checked="" type="checkbox"/> Private Line Blockage | <input type="checkbox"/> Other |
| <input type="checkbox"/> Lagoon High Level | |

Additional explanation of reason for Incident: (use additional page if necessary)
Private line blocked. Backed up lateral leaking out of cleanout.

9. Corrective Action, if any: (use additional page if necessary)
Homeowner called J.F. Denney to repair line.

Name: Chuck Staples Date: 12/5/2019
 Title: Superintendent Phone: 913-682-1090

When Completed, E-mail to: cseeds@kdheks.gov
 Kansas Department of Health & Environment – Attn: Chris Seeds
 Or Mail to: 1000 SW Jackson St., Suite 420, Topeka , KS 66612-1367
 Fax 785.296.0086

**KANSAS DEPARTMENT OF HEALTH AND ENVIRONMENT
WASTEWATER INCIDENT REPORT FORM**

Definitions are available at <http://www.kdheks.gov/water/tech.html>

Collection System Bypass In-Plant Diversion Upset In-Plant Flow Through Spill

1. FACILITY NAME: Leavenworth, City of Kansas Permit # M-MO12-IO01
2. Within 24 hours of discovery, notify the KDHE Central Office (email – cseeds@kdheks.gov), (fax 785.296.0086), (telephone 785.296.5517) or your local KDHE district office. Written notification is required within 5 days of discovery. If the incident is not corrected within 5 days, send a written notification to KDHE indicating the status. This form is to be sent to KDHE when the incident ends.

KDHE Person Contacted: Chris Seeds Date: 12/12/19 Time: 2:29 pm

3. Date Incident Discovered: 12/11/2019 Time: 7:50 am
4. Date Incident Ended: 12/12/2019 Time: 2:20 pm
5. Total estimated gallons bypassed, spilled, or routed through failed equipment for all locations on this form: 30 gallons
6. If rainfall induced event, approximate inches of rainfall n/a
 If multiple locations listed below due to rain event, check here

7. Incident Location: (check all that apply)
- | | |
|--|--|
| <input type="checkbox"/> Plant | <input type="checkbox"/> City Collection Line (Line Break / Joint) |
| <input type="checkbox"/> Lift/Pump Station | <input checked="" type="checkbox"/> Private Sewer Line |
| <input type="checkbox"/> Peak Flow Basin | <input type="checkbox"/> Basement |
| <input type="checkbox"/> Manhole(s) | <input type="checkbox"/> Other (specify below) |

Identify **All** Incident Locations by Name, Street Address or Manhole Number as appropriate.

1700 S. 5th St. out of cleanout

8. Cause of Incident:
- | | |
|---|--|
| <input type="checkbox"/> Intentional Bypass for Repair/Construction | <input type="checkbox"/> Equipment Failure |
| <input type="checkbox"/> Excessive Rainfall, Snow Melt | <input type="checkbox"/> Control System Failure |
| <input type="checkbox"/> Unplanned Construction Related Break | <input type="checkbox"/> Power Related Failure |
| <input type="checkbox"/> City Line Break (Not Construction Related) | <input type="checkbox"/> Operations Related Failure |
| <input type="checkbox"/> City Line Blockage | <input type="checkbox"/> Maintenance Related Failure |
| <input type="checkbox"/> Private Line Break | <input type="checkbox"/> Vandalism |
| <input checked="" type="checkbox"/> Private Line Blockage | <input type="checkbox"/> Other |
| <input type="checkbox"/> Lagoon High Level | |

Additional explanation of reason for Incident: (use additional page if necessary)
Roots pulled from private line.

9. Corrective Action, if any: (use additional page if necessary)
Homeowner called plumber from Crosby plumbing. Pulled roots from private line. City cleaned street and alley way.

Name: Tim Guardado Date: 12/12/19
Title: Superintendent Phone: 913-682-1090

When Completed, E-mail to: cseeds@kdheks.gov
Kansas Department of Health & Environment – Attn: Chris Seeds
Or Mail to: 1000 SW Jackson St., Suite 420, Topeka, KS 66612-1367
Fax 785.296.0086

5.5.1

KANSAS DEPARTMENT OF HEALTH AND ENVIRONMENT
WASTEWATER INCIDENT REPORT FORM

Definitions are available at <http://www.kdheks.gov/water/tech.html>

Collection System Bypass In-Plant Diversion Upset In-Plant Flow Through Spill

1. FACILITY NAME: Leavenworth, City of Kansas Permit # M-MO12-IO01

2. Within 24 hours of discovery, notify the KDHE Central Office (email – cseeds@kdheks.gov), (fax 785.296.0086), (telephone 785.296.5517) or your local KDHE district office. Written notification is required within 5 days of discovery. If the incident is not corrected within 5 days, send a written notification to KDHE indicating the status. This form is to be sent to KDHE when the incident ends.

KDHE Person Contacted: Chris Seeds Date: 12/20/19 Time: 12:03 pm

3. Date Incident Discovered: 12/19/2019 Time: 12:30 pm

4. Date Incident Ended: 12/20/2019 Time: 10:00 am

5. Total estimated gallons bypassed, spilled, or routed through failed equipment for all locations on this form: 15 Gallons

6. If rainfall induced event, approximate inches of rainfall n/a

If multiple locations listed below due to rain event, check here

7. Incident Location: (check all that apply)

- Plant
- Lift/Pump Station
- Peak Flow Basin
- Manhole(s)
- City Collection Line (Line Break / Joint)
- Private Sewer Line
- Basement
- Other (specify below)

Identify **All** Incident Locations by Name, Street Address or Manhole Number as appropriate.

306 Miami St. Leavenworth KS, 66048 Overflow contained in Basement.

8. Cause of Incident:

- Intentional Bypass for Repair/Construction
- Excessive Rainfall, Snow Melt
- Unplanned Construction Related Break
- City Line Break (Not Construction Related)
- City Line Blockage
- Private Line Break
- Private Line Blockage
- Lagoon High Level
- Equipment Failure
- Control System Failure
- Power Related Failure
- Operations Related Failure
- Maintenance Related Failure
- Vandalism
- Other

Additional explanation of reason for Incident: (use additional page if necessary)
private line blocked

9. Corrective Action, if any: (use additional page if necessary)
Homeowner had Precision Plumbing clear line blockage.

Name: Tim Guardado

Date: 12/20/2019

Title: Superintendent

Phone: 913-682-1090

When Completed, E-mail to: cseeds@kdheks.gov

Kansas Department of Health & Environment – Attn: Chris Seeds
Or Mail to: 1000 SW Jackson St., Suite 420, Topeka, KS 66612-1367
Fax 785.296.0086

KANSAS DEPARTMENT OF HEALTH AND ENVIRONMENT
WASTEWATER INCIDENT REPORT FORM

Copy
10.1.25

Definitions are available at <http://www.kdheks.gov/water/tech.html>

Collection System Bypass In-Plant Diversion Upset In-Plant Flow Through Spill

1. FACILITY NAME: Leavenworth, City of Kansas Permit # M-MO12-IO01
2. Within 24 hours of discovery, notify the KDHE Central Office (email – cseeds@kdheks.gov), (fax 785.296.0086), (telephone 785.296.5517) or your local KDHE district office. Written notification is required within 5 days of discovery. If the incident is not corrected within 5 days, send a written notification to KDHE indicating the status. This form is to be sent to KDHE when the incident ends.

KDHE Person Contacted: Chris Seeds Date: 12/27/19 Time: 4:24pm

3. Date Incident Discovered: 12/27/2019 Time: 2:45 pm
4. Date Incident Ended: 12/27/2019 Time: 3:45 pm
5. Total estimated gallons bypassed, spilled, or routed through failed equipment for all locations on this form: 3,750 gallons
6. If rainfall induced event, approximate inches of rainfall n/a
If multiple locations listed below due to rain event, check here

7. Incident Location: (check all that apply)
- | | |
|--|--|
| <input type="checkbox"/> Plant | <input type="checkbox"/> City Collection Line (Line Break / Joint) |
| <input type="checkbox"/> Lift/Pump Station | <input type="checkbox"/> Private Sewer Line |
| <input type="checkbox"/> Peak Flow Basin | <input checked="" type="checkbox"/> Basement |
| <input checked="" type="checkbox"/> Manhole(s) | <input type="checkbox"/> Other (specify below) |

Identify **All** Incident Locations by Name, Street Address or Manhole Number as appropriate.
838 Ottawa St. basement and manhole 0145 which is behind house.

8. Cause of Incident:
- | | |
|---|--|
| <input type="checkbox"/> Intentional Bypass for Repair/Construction | <input type="checkbox"/> Equipment Failure |
| <input type="checkbox"/> Excessive Rainfall, Snow Melt | <input type="checkbox"/> Control System Failure |
| <input type="checkbox"/> Unplanned Construction Related Break | <input type="checkbox"/> Power Related Failure |
| <input type="checkbox"/> City Line Break (Not Construction Related) | <input type="checkbox"/> Operations Related Failure |
| <input checked="" type="checkbox"/> City Line Blockage | <input type="checkbox"/> Maintenance Related Failure |
| <input type="checkbox"/> Private Line Break | <input type="checkbox"/> Vandalism |
| <input type="checkbox"/> Private Line Blockage | <input type="checkbox"/> Other |
| <input type="checkbox"/> Lagoon High Level | |

Additional explanation of reason for Incident: (use additional page if necessary)
City crews pulled excessive amounts of grease out of line.

9. Corrective Action, if any: (use additional page if necessary)
City Crews will CCTV sanitary main to determine condition of main. Cleaned yard and put lime down. Sewage did reach the creek. Creek contaminated signs put along creek.

Name: Tim Guardado Date: 12/27/2019
Title: Superintendent Phone: 913-682-1090

When Completed, E-mail to: cseeds@kdheks.gov
Kansas Department of Health & Environment – Attn: Chris Seeds
Or Mail to: 1000 SW Jackson St., Suite 420, Topeka, KS 66612-1367
Fax 785.296.0086

MAINTENANCE

check manhole 0229.2 at 711 Seneca

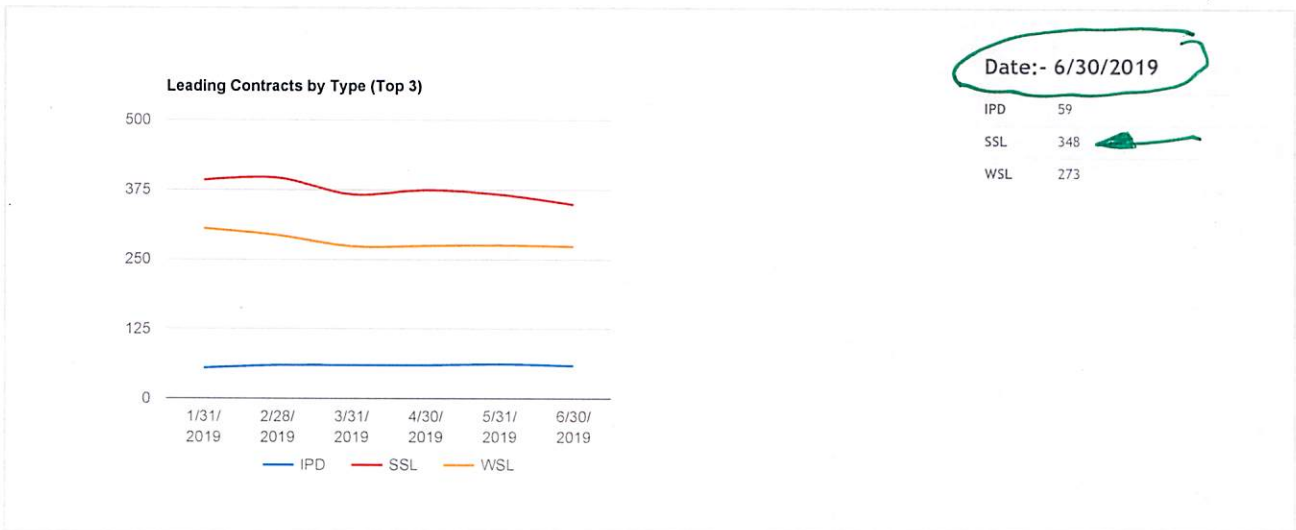
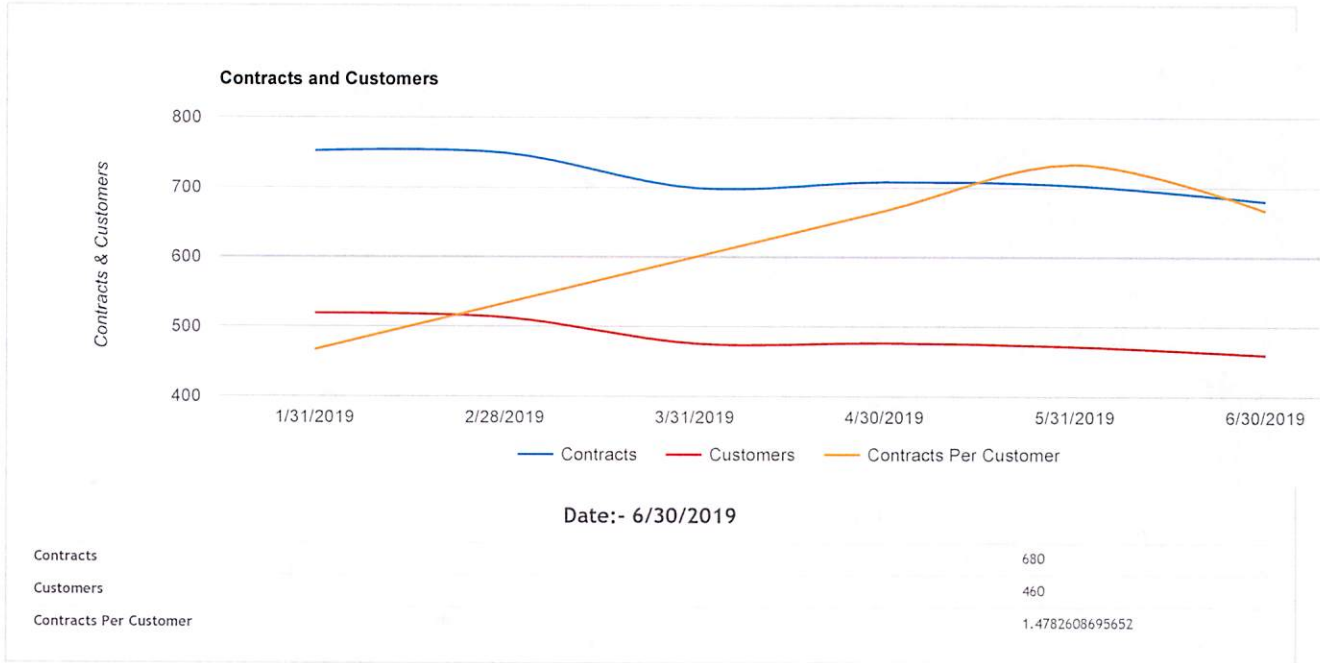
just check do not rod or dye

NO.	LOCATION	UP/DOWN MH	FOOTAGE	DATE/TIME	FLUSH	ROD	CHECK	CREW	VEHICLE	REASON/PROBLEM
1	1320 S. 4th Street	0619-0627	374							Sags 112' from MH 4207
2	210 Elm Street	0614-0613.1	620							MH 0613.1 collects debris
3	306 S. 3rd Street	0195-0194	408							Severe sags
4	100 N. 5th Street	0228-0227	828							Sewer smell in City Hall
5	401 Delaware Street	0270-0269.1	391.5							Sags and grease
6	914 Broadway	0065-0065.1	180							Sags and grease
7	744 Pottawatomie	0165.1-0166	1000							Clean downstream flat
8	8th & Pottawatomie	0167-0168	200							Sags and grease
9	611 N. Broadway	0150.2-0150.1	55							Line is flat
10	11th & Kiowa	0125.1-0125	200							Severe sags
11	1500 Pawnee Street	1160-1635	501							Sag 28' east MH 1159
12	14th & Miami	1291-1290	168							Sags
13	2049 Marjorie Circle	1764-1763	144							Severe offset in joints and roots
14	Grand Avenue & Ironmoulders	0436-0436.1	159							Severe sags
15	705 Scott Street	0526-0536.2	218							Roots
16	2109 S. 4th Street	0657.2-0657.1	20							Grease buildup
17	503 Spencer Place	2437-2417-2416	475							Debris buildup in MH 2415
18	3917 Lakeview Drive	1981.2-1981	414.7							Light to medium grease
19	Cody Park	1443-1404	114							Creek crossing roots
20	2019 S. 3rd - Animal Control	1895 - clean out	170'							Line flat collects debris

[Logout](#)



Partner Reporting Dashboard



[Logout](#)



Partner Reporting Dashboard

