



Sent via e-mail

January 12, 2018

Wayne Dillard, P.E.
U.S. Environmental Protection Agency – Region 7
Water, Wetlands and Pesticides Division
11201 Renner Boulevard
Lenexa, KS 66219
Dillard.Wayne@epa.gov

RE: SSO Order of Compliance – Docket No. CWA-07-2015-0022
Compliance Actions – City of Leavenworth
Timeframe: July 1, 2017 to December 31, 2017

Mr. Dillard:

Pursuant to Paragraphs 37 and 38 of the Order of Compliance on Consent, Docket No. CWA-07-2015-0022, the City of Leavenworth, Kansas is providing the following:

Paragraph 37. Attached is a listing of SSO “Transparency Report” notifications on the City of Leavenworth webpage at www.lvks.org. These are related to SSO events that reached the Waters of the United States. Additional notifications of these events were made by the City Public Information Officer (PIO) via Social Media and elsewhere on the City’s webpage at www.lvks.org.

There was one SSO event that reached the Waters of the United States between July 1, 2017 and December 31, 2017.

December 27, 2017. At approximately 4:15pm an off-duty City employee reported a sewer overflow near 1906 Fifth Avenue. A water main had broken causing treated water to leak into the sanitary sewer, overflow into the street, and then back into the storm drain which entered an un-named tributary to Five-Mile Creek. Leavenworth Waterworks (not a City utility) turned off the water main and stopped the overflow at 4:30 p.m. An estimated 10,000 gallons of treated drinking water leaked into the sanitary sewer, causing it to overflow into the creek. The City reported the incident to the Kansas Department of Health and Environment, placed “contaminated creek” signs near the affected areas, notified PIO to place a transparency report on the City’s webpage, and took E. coli samples. On December 29 tests shows no excessive E. coli readings and signs have been removed.

Paragraph 38. Describe actions taken by the City between July 1, 2017 and December 31, 2017 to comply with this order, and attach copies of all SSO reports submitted to KDHE.

(a.) The number of unauthorized discharges which occur within the City's POTW (Publicly-Owned Treatment Works) during the reporting period:

15 SSO events occurred during this period and were reported to KDHE. A report showing each event and resolution of the event is included with this letter.

- **8 Private-Line Events.** One reached the Waters of the United States.
 - 4 events were from contractor actions
 - 4 events were not related to contractor actions
- **3 City-Line Events.** None reached Waters of the United States.
 - 1 event was from contractor actions
 - 2 events were not related to contractor actions
- **3 Fort Leavenworth** events were reported by American Water to KDHE. Copies of those reports are included. It is unknown if any of these events reached the Waters of the United States (The City of Leavenworth has no jurisdiction on Fort Leavenworth even though it is inside the City limits.)
- **1 USP Leavenworth** (Bureau of Prisons) SSO event was reported to KDHE. A copy of that report is included. It is unknown if this event reached the Waters of the United States. The volume of the SSO was reported to be 75 gallons. (The City of Leavenworth has no jurisdiction on USP Leavenworth even though it is inside the City limits.)

(b.) The specific measures taken by the City to correct and prevent recurrence of each unauthorized discharge which occurred within the City's POTW during the reporting period:

The City and residents have taken the actions as noted in the summary report related to Paragraph 38, section (a) above. In addition to those efforts, the following work occurred in the reporting period:

1. City continues to operate a CCTV crew. 3.93 miles were inspected during the reporting period for a total of 6.3 miles in 2017.
2. City continues to operate a cleaning and root elimination crew. 22.8 miles were cleaned during the reporting period for a total of 48.8 miles for 2017.
3. City inspected the results of root control operations performed in April 2017. No areas were identified for warranty work. Specifications are being prepared for a similar project in 2018.
4. City continues to operate a grease trap inspection program. Letters are sent to selected relevant businesses monthly and all known owners are contacted at least one time each year. The letters inform businesses of the program and the City requests copies of maintenance records. City has identified 66 grease trap locations from both open and closed businesses. Physical inspections have been completed in 24 of the 66 grease trap installations during the reporting period. Four new installations were completed

during the reporting period. Currently 28 businesses have not yet complied with City request letters regarding the need for inspection.

5. City awarded construction contracts in the reporting period totaling over \$675,000 for annual Inflow/Infiltration construction. This work is currently under construction. Two contracts for creek crossing repairs and manhole adjustments totaling \$19,900 were awarded and completed. A contract for a sewer rate study was awarded to Black & Veatch in the amount of \$51,520 and is expected to be completed in early 2018.
6. City efforts related to retention of employees have resulted in the following during the reporting period:
 - a. One employee separated from WPC. One new employee was hired, and one employee was promoted. There was one vacancy at the end of the reporting period which is currently being advertised for applicants.
 - b. Training and education opportunities are available for all operators; to include in-house and formal training, and three California correspondence courses. All KDHE-certified operators are current in their requirements. Two employees attended KDHE Annual School training, two employees attended Camera NASCO training, three employees attended a math refresher course, three employees attended Pump School, three employees attended a Lift Station course, two employees attended IDDE training, and five employees completed the correspondence courses.
7. Two cycles of creek-crossing inspections have occurred in the reporting period with three issues noted. Outside contractors have completed repairs at two locations and the third location will be addressed in early 2018.
8. The "Trouble Line" list continues to be investigated by City staff. These lines are subjected to additional routine cleaning or inspection on approximately a monthly basis due to previous situations. City staff removed seven lines from the list during the reporting period due to lack of issues during the evaluation period where maintenance intervals were increased. Two new lines were added to the "Trouble Line" list which currently has 22 lines. One line is expected to be removed after a completion of a planned I/I construction project. There is currently one line under evaluation for removal from the list.
9. City has contracted with Service Line Warranties of America to provide an affordable repair option for all residential sewer lines (private lines). This optional program began in January 2017. Records indicate that 154 customers registered for the sewer line warranty program during the reporting period of July 1, 2017 to December 31, 2017. Four warranty repairs occurred within the reporting period.
10. City Community Development Block Grant (CDBG) funds may be used to fund homeowner private sewer line repair or water line repair up to a maximum cap of \$5,000

depending on income qualifications. There were no CDBG sewer line repairs during the reporting period.

11. City Housing Trust Fund (HTF) resources may be used to assist homeowner private sewer line repair or water line repair up to a maximum cap of \$5,000 depending on income qualifications. There was one HTF sewer line repair during the reporting period in the amount of \$4,223.75.
12. City of Leavenworth and City of Lansing have signed a Memorandum of Understanding related to use of City of Lansing facilities for disposing of solids from the Vector truck.
13. City has evaluated SSOs related to contractor actions. No patterns of behavior or actions were determined to be responsible. The need for situational awareness has been stressed to City inspectors and the contractors involved with the SSOs.

(c.) A copy of each unauthorized discharge report submitted to KDHE: Copies of 15 KDHE SSO reports are attached to this letter. This includes three events on Fort Leavenworth and one event originating on USP.

If you have any questions or need additional documentation, please don't hesitate to contact me at 913-684-0375 or by email at mmcdonald@firstcity.org.

Sincerely,



Michael G. McDonald, P.E.,
Director of Public Works

cc: Paul Kramer, City Manager
Jaime Gaggero, Director, Bureau of Water, KDHE (sent via U.S. mail)
Brittany A. Barrientos, Attorney

Attachments

- Screenshots of on-line Transparency Report with details of the one event
- Spreadsheet with summary of 15 SSO events with dates and corrective actions
- KDHE SSO reports (15 events)
- Listing of 22 "Trouble Lines" currently receiving enhanced maintenance
- Summary sheet from Service Line Warranties of America program
- Contractor-Related SSO events



Welcome to

Leavenworth

Kansas

SEARCH THE SITE



Home

Departments

Residents

Businesses

Visitors

Media Room

Services

Contact Us

Chuck Staples,
Supervisor, Water Pollution
Control

**Wastewater Treatment
Plant** (more)
1800 S 2nd St
Leavenworth, KS 66048
Get Directions

Assistant:
(913) 682-1090

Department Staff

Related Topics

Department Home

Topics

Grow Leavenworth
County Development
Corporation (an E-
Community)

Application for
Subdivision
Development

Economic
Development Grants

Weather and Rainfall
Information for
Leavenworth

Sister City Program

Brush Site

Sanitary Sewer
Overflow
Transparency Report

You are here: Home > Departments > Sanitary Sewer Overflow Transparency Report

About This
Topic

Documents
& Reports

More
Information

News &
Notices

Sanitary Sewer Overflow Transparency Report

City crews work to keep the main sewer lines clean and maintained. There is occasionally a break in a sewer line that can lead to discharge of untreated sewage, possibly reaching the stormwater drainage system. We urge Leavenworth residents to contact us immediately if they see signs of a sewer discharge at 913-682-1090. Crews respond to system user requests for service 24 hours a day 7 days a week.

The City of Leavenworth can only verify the City main lines. A lateral line is the line that runs from a residence or business to the City sewer mains. We cannot verify blockages in lateral lines. This must be done by a licensed plumbing company.

Information on Sanitary Sewer Overflows is made available to the general public as part of the City's transparency efforts.

2016

- Sanitary Sewer Overflow reported Feb. 22, 2016 between Seventh and Broadway and Ottawa and Kickapoo
- Sanitary Sewer Overflow reported March 23, 2016 at Iowa and Oregon streets
- Sanitary Sewer Overflow reported April 10, 2016 south of Metropolitan Avenue
- Sanitary Sewer Overflow reported April 12, 2016 at 11th and Cherokee
- Sanitary Sewer Overflow reported April 26, 2016 at 555 Ohio
- Sanitary Sewer Overflow reported May 11, 2016 at Second and Elm
- Sanitary Sewer Overflows as a result of May 26, 2016 rainstorm
- Sanitary Sewer Overflow reported June 5 at Buffalo Bill Cody Park
- Sanitary Sewer Overflow reported July 2, 2016, at manholes throughout the City.
- Sanitary Sewer Overflows on July 5, 2016
- Sanitary Sewer Overflows on Sept. 14, 2016

2017

- Sanitary Sewer Overflow reported Feb. 18, 2017 near Fourth and Spruce streets
- Sanitary Sewer Overflow reported Feb. 22, 2017
- Sanitary Sewer Overflow reported April 3, 2017
- Sanitary Sewer Overflow reported April 21, 2017
- Sanitary Sewer Overflow reported April 22, 2017
- Sanitary Sewer leak reported May 16, 2017
- Sanitary Sewer Overflow reported May 30, 2017
- Sanitary Sewer Overflow reported June 9, 2017
- Sanitary Sewer Overflow for June 19, 2017
- Sanitary Sewer Overflow for December 28, 2017



Welcome to

Leavenworth

Kansas

Site Search



- Home
- Departments
- Residents
- Businesses
- Visitors
- Media Room
- Services

Contact Us

100 N. 5th St
Leavenworth, KS 66048
Get Directions

Phone:
(913) 682-9201

Email Us

Staff Directory

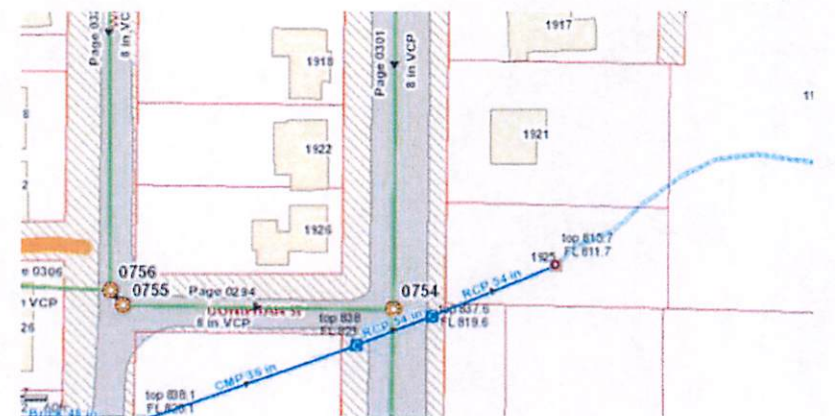
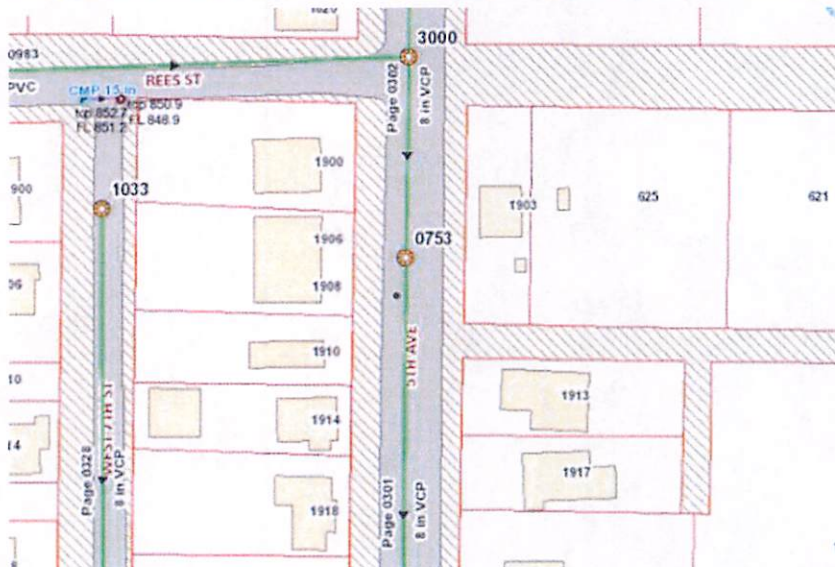
Sanitary Sewer Overflow for December 28, 2017

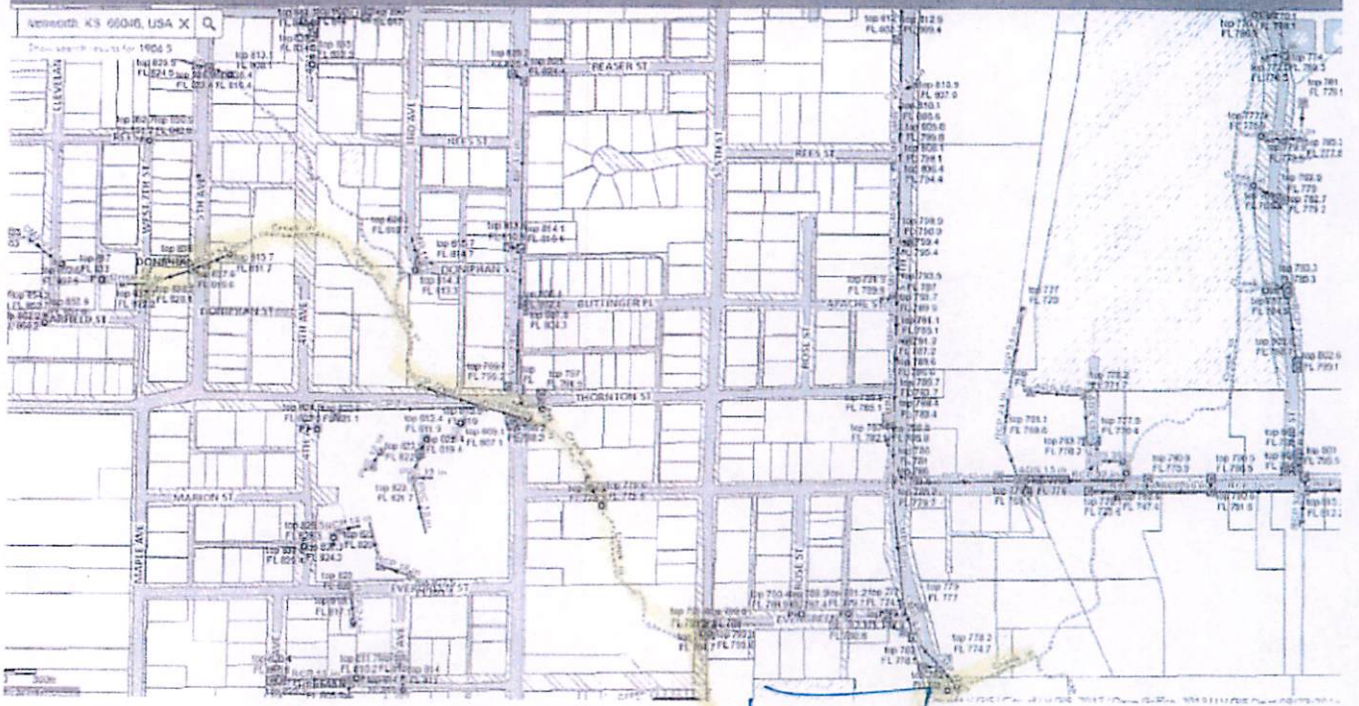
On Dec. 27, 2017, a citizen reported a sewer overflow near 1906 Fifth Avenue. A water main had broken causing treated water to leak into the sanitary sewer, overflow into the street and then back into the storm drain.

ACTIONS TAKEN: Leavenworth Water Pollution Control responded to the call at 4:15 p.m., turned off the water main and stopped the overflow at 4:30 p.m. An estimated 10,000 gallons of treated drinking water leaked into the sanitary sewer, causing it to overflow. The City reported the incident to the Kansas Department of Health and Environment.

RISK TO PUBLIC: The City placed "contaminated creek" signs near the area affected areas. The signs will be removed when E. coli levels in the creek are within acceptable limits set by the KDHE. Residents should stay away from the creek until signs are removed. The affected area is the 1900 block of Fifth Avenue to Five Mile Creek at Santa Fe and Second Avenue. **UPDATE:** On 12/29, tests shows no excessive E. coli readings and signs have been removed.

WHAT RESIDENTS CAN DO TO HELP: If you notice a sewer leaking onto the ground, call the City's 24-hour line, 913-682-1090.





*COM
PARK*



City of Leavenworth

SSO Summary July 1 - December 31, 2017

All of these events resulted in KDHE SSO Report

| No. | Date | Address | Nature of Problem | SSO | Problem | Trans. Report | ISSUE | SOLUTION |
|-----|------------|-----------------------|---|-----|---------|---------------|-------------------------|--|
| 1 | 7/17/2017 | 413 Rees st | Sewage bypass out of cleanout | y | plt | | private lateral blocked | Called plumber, repaired permit 3752 |
| 2 | 8/7/2017 | Ft Leavenworth | Power outage blunville pump station | y | plt | | power outage | Power restored vfd reset |
| 3 | 8/4/2017 | 1220 spruce | sewage in basement | y | clt | | roots in line | Line cleared of roots added to root treatment list |
| 4 | 8/21/2017 | 1042 wallis lane | construction company attaching new sewer main. Big rains flooded sewer. | y | plt | | Construction | Construction company informed to not leave lines open, building permit for repairs |
| 5 | 8/26/2017 | 1120 Dakota | sewage in basement | y | plt | | private lateral blocked | Informed to call plumber |
| 6 | 8/26/2017 | 1215 Olive st | sewage in basement | y | clt | | roots in line | Roots cleared line added to root treatment list |
| 7 | 10/13/2017 | westglen lift station | construction to force main. | y | clt | | force main repairs | Making repairs to force main, no wastewater use at this time |
| 8 | 10/3/2017 | Fort Leavenworth | Manhole 05-1702 roots and grease buildup | y | plt | | roots/grease | American Water had line cleaned |
| 9 | 10/20/2017 | 431 Topeka | backup in basement | y | plt | | private lateral blocked | Plumber on scene upon arrival problem resolved, permit 3538 |
| 10 | 10/28/2017 | 1300 Metropolitan | USP prison lift station problem during replacing old pumps. | y | plt | | equipment failure | Repairing lift station. Made repairs |
| 11 | 11/5/2017 | 914 Olive st | sewage running down st | y | plt | | private lateral blocked | Informed homeowner to call plumber/ repair made |
| 12 | 12/6/2017 | 2421 15th st | westar hit private lateral | y | plt | | construction | Westar hit sewer main. Westar called plumber to make repair, permit 3747 |
| 13 | 12/23/2017 | 1030 Randolph st | sewer backing up in basement | y | plt | | private lateral blocked | Informed homeowner to call plumber |
| 14 | 12/27/2017 | Ft Leavenworth | back up caused by tree roots | y | plt | | roots in line | American Water had line cleaned |
| 15 | 12/27/2017 | 1906 5th Ave. | water main break flowing into city main backing system up | y | plt | 12/28/2017 | Water main break | Water shut off/ Line repaired stopped excess water infiltrating city sewer main |

Note: plt = Private line trouble
 clt = city line trouble
 plant = WWTP

| |
|-------------------|
| City Line Problem |
| Fort Leavenworth |
| Bureau of Prisons |

KANSAS DEPARTMENT OF HEALTH AND ENVIRONMENT
WASTEWATER INCIDENT REPORT FORM

Definitions are available at <http://www.kdheks.gov/water/tech.html>

Collection System Bypass In-Plant Diversion Upset In-Plant Flow Through Spill

1. FACILITY NAME: Leavenworth, City of Kansas Permit # M-MO12-IO01
2. Within **24** hours of discovery, notify the KDHE Central Office (email – cseeds@kdheks.gov), (fax 785.296.0086), (telephone 785.296.5517) or your local KDHE district office. Written notification is required within 5 days of discovery. If the incident is not corrected within 5 days, send a written notification to KDHE indicating the status. This form is to be sent to KDHE when the incident ends.

KDHE Person Contacted: Chris Seeds Date: 7/17/17 Time: 12:11 pm

3. Date Incident Discovered: 7/17/2017 Time: 9:45 pm
4. Date Incident Ended: 7/17/2017 Time: 11:30 am
5. Total estimated gallons bypassed, spilled, or routed through failed equipment for all locations on this form: unknown but would estimate 50 gallons
6. If rainfall induced event, approximate inches of rainfall n/a
If multiple locations listed below due to rain event, check here

7. Incident Location: (check all that apply)

Plant City Collection Line (Line Break / Joint)
 Lift/Pump Station Private Sewer Line
 Peak Flow Basin Basement
 Manhole(s) Other (specify below)

Identify **All** Incident Locations by Name, Street Address or Manhole Number as appropriate.

A concerned citizen called stating water was running from the buildings east side at 413 Rees St. The upstream manholes is 1658 and the downstream is 0646.

8. Cause of Incident:

Intentional Bypass for Repair/Construction Equipment Failure
 Excessive Rainfall, Snow Melt Control System Failure
 Unplanned Construction Related Break Power Related Failure
 City Line Break (Not Construction Related) Operations Related Failure
 City Line Blockage Maintenance Related Failure
 Private Line Break Vandalism
 Private Line Blockage Other
 Lagoon High Level

Additional explanation of reason for Incident: (use additional page if necessary)

Upon arrival we could see that the lateral was backing up. We place containment socks around the area to keep the water in the yard.

9. Corrective Action, if any: (use additional page if necessary)

I called the plumber that works for the owner and he responded and started rodding out the lateral. The plumber stated he would clean up around the lateral.

Name: Chuck Staples Date: 7/17/17

Title: Superintendent Phone: 913-682-1090

When Completed, E-mail to: cseeds@kdheks.gov

Kansas Department of Health & Environment – Attn: Chris Seeds

**KANSAS DEPARTMENT OF HEALTH AND ENVIRONMENT
WASTEWATER INCIDENT REPORT FORM**

Definitions are available at <http://www.kdheks.gov/water/tech.html>

Collection System Bypass In-Plant Diversion Upset In-Plant Flow Through Spill

1. FACILITY NAME: Leavenworth, City of Kansas Permit # M-MO12-IO01
2. Within 24 hours of discovery, notify the KDHE Central Office (email – cseeds@kdheks.gov), (fax 785.296.0086), (telephone 785.296.5517) or your local KDHE district office. Written notification is required within 5 days of discovery. If the incident is not corrected within 5 days, send a written notification to KDHE indicating the status. This form is to be sent to KDHE when the incident ends.

KDHE Person Contacted: Chris Seeds Date: 8/4/17 Time: 12:56 pm

3. Date Incident Discovered: 8/4/2017 Time: 10:46 am
4. Date Incident Ended: 8/4/2017 Time: 11:35 am
5. Total estimated gallons bypassed, spilled, or routed through failed equipment for all locations on this form: 25 gallons
6. If rainfall induced event, approximate inches of rainfall n/a
If multiple locations listed below due to rain event, check here

7. Incident Location: (check all that apply)

- | | |
|--|--|
| <input type="checkbox"/> Plant | <input type="checkbox"/> City Collection Line (Line Break / Joint) |
| <input type="checkbox"/> Lift/Pump Station | <input type="checkbox"/> Private Sewer Line |
| <input type="checkbox"/> Peak Flow Basin | <input checked="" type="checkbox"/> Basement |
| <input type="checkbox"/> Manhole(s) | <input type="checkbox"/> Other (specify below) |

Identify **All** Incident Locations by Name, Street Address or Manhole Number as appropriate.
James Gabbert called stating he has water in his basement at 1220 Spruce st. The upstream manhole is 0392 and the downstream manhole is 0393.

8. Cause of Incident:

- | | |
|---|--|
| <input type="checkbox"/> Intentional Bypass for Repair/Construction | <input type="checkbox"/> Equipment Failure |
| <input type="checkbox"/> Excessive Rainfall, Snow Melt | <input type="checkbox"/> Control System Failure |
| <input type="checkbox"/> Unplanned Construction Related Break | <input type="checkbox"/> Power Related Failure |
| <input type="checkbox"/> City Line Break (Not Construction Related) | <input type="checkbox"/> Operations Related Failure |
| <input checked="" type="checkbox"/> City Line Blockage | <input type="checkbox"/> Maintenance Related Failure |
| <input type="checkbox"/> Private Line Break | <input type="checkbox"/> Vandalism |
| <input type="checkbox"/> Private Line Blockage | <input type="checkbox"/> Other |
| <input type="checkbox"/> Lagoon High Level | |

Additional explanation of reason for Incident: (use additional page if necessary)
Upon arrival we had good flow so we rodded from 0393 and hit a blockage 43 feet from the downstream manhole. We broke through and continued to rodded another 104 feet without problems.

9. Corrective Action, if any: (use additional page if necessary)

After rodding the line the water in the basement started to recede. We will camera this line to find out if there are roots in the line and if there are we will place this on our root list for cleaning.

Name: Chuck Staples Date: 8/04/17
Title: Superintendent Phone: 913-682-1090

When Completed, E-mail to: cseeds@kdheks.gov
Kansas Department of Health & Environment – Attn: Chris Seeds

KANSAS DEPARTMENT OF HEALTH AND ENVIRONMENT
WASTEWATER BYPASS REPORT FORM

1. FACILITY NAME: Fort Leavenworth Kansas Permit # M-MO12-IO 01
2. Within 24 Hours of Discovery, Notify the KDHE Central Office (email – cseeds@kdhe.state.ks.us), (fax 785.296.0086), (telephone 785.296.5517) or your KDHE local district office. Written notification required within 5 days of discovery.

KDHE Person Contacted: _____ Date: _____ Time: _____

3. Date Bypass Discovered: 8/2/2017 Time: 3:10pm

4. Date Bypass Ended: 8/2/2017 Time: 3:45pm

5. Total Estimated Gallons Bypassed for All Locations on this Form: Less than 100 gallons

6. If rainfall event, approximate inches of rainfall N/A

If multiple bypass locations listed below due to rain event, check here N/A

7. Bypass Location: (check all that apply)

- | | |
|--|--|
| <input type="checkbox"/> Plant | <input type="checkbox"/> City Collection Line |
| <input checked="" type="checkbox"/> Lift/Pump Station | <input type="checkbox"/> Private Sewer Line |
| <input type="checkbox"/> Peak Flow Basin | <input type="checkbox"/> Other (specify below) |
| <input type="checkbox"/> Manhole(s) (list manhole #'s below) | |

8. Cause of Bypass: (definitions available at <http://www.kdheks.gov/water/tech.html>)

- | | |
|---|---|
| <input type="checkbox"/> Intentional Bypass for Repair/Construction | <input type="checkbox"/> Equipment Failure |
| <input type="checkbox"/> Excessive Rainfall, Snow Melt | <input type="checkbox"/> Control System Failure |
| <input type="checkbox"/> Unplanned Construction Related Break | <input checked="" type="checkbox"/> Power Related Failure |
| <input type="checkbox"/> City Line Break (Not Construction Related) | <input type="checkbox"/> Operations Related Failure |
| <input type="checkbox"/> City Line Blockage | <input type="checkbox"/> Maintenance Related Failure |
| <input type="checkbox"/> Private Line Break | <input type="checkbox"/> Vandalism |
| <input type="checkbox"/> Private Line Blockage | <input type="checkbox"/> Spill |
| <input type="checkbox"/> Lagoon High Level | <input type="checkbox"/> Other |

Additional explanation of reason for bypass: (use additional page if necessary)

There was an all base power outage. This caused the generator to kick on at the pump station but did not reset the VFD (Variable Frequency Drive).

9. Corrective Action, if any: (use additional page if necessary)

Once the response crew arrived the VFD was reset and the pump started up moments later. Once the VFD was working properly the cleanup process began and the water/sewage was washed back into the pump station (no sewage left the concrete pad).

Name: Andrew J. Turner Date: 8/3/2017

Title: Environmental Health and Safety Specialist

When Completed, Mail to: Kansas Department of Health and Environment
Attn: Chris Seeds
1000 SW Jackson St., Suite 420
Topeka, KS 66612-1367

Mike McDonald

From: Chuck Staples
Sent: Friday, January 12, 2018 10:54 AM
To: Mike McDonald
Subject: Fort Leavenworth

Mike: The KDHE report we received for the SSO is dated in our file the day WPC received the KDHE report 8/7/17. The date on the KDHE report is the day the incident took place 8/02/17.

1042 Wallis Lane
KANSAS DEPARTMENT OF HEALTH AND ENVIRONMENT
WASTEWATER INCIDENT REPORT FORM

Contractor
Wolf Farm

Definitions are available at <http://www.kdheks.gov/water/tech.html>

Collection System Bypass In-Plant Diversion Upset In-Plant Flow Through Spill

1. FACILITY NAME: City of Leavenworth Kansas Permit # M-M012-I001
2. Within 24 hours of discovery, notify the KDHE Central Office (email – cseeds@kdheks.gov), (fax 785.296.0086), (telephone 785.296.5517) or your local KDHE district office. Written notification is required within 5 days of discovery. If the incident is not corrected within 5 days, send a written notification to KDHE indicating the status. This form is to be sent to KDHE when the incident ends.

KDHE Person Contacted: Chris Seeds Date: 10/13/17 Time: 12:29 pm

3. Date Incident Discovered: 10/13/2017 Time: 11:00 am
4. Date Incident Ended: 10/13/2017 Time: 11:45 am
5. Total estimated gallons bypassed, spilled, or routed through failed equipment for all locations on this form: 1600
6. If rainfall induced event, approximate inches of rainfall n/a
If multiple locations listed below due to rain event, check here

7. Incident Location: (check all that apply)
- | | |
|---|--|
| <input type="checkbox"/> Plant | <input type="checkbox"/> City Collection Line (Line Break / Joint) |
| <input checked="" type="checkbox"/> Lift/Pump Station | <input type="checkbox"/> Private Sewer Line |
| <input type="checkbox"/> Peak Flow Basin | <input type="checkbox"/> Basement |
| <input type="checkbox"/> Manhole(s) | <input type="checkbox"/> Other (specify below) |

Identify **All** Incident Locations by Name, Street Address or Manhole Number as appropriate.
Wolf Farm lift station. Eisenhower Road, Leavenworth ks. No manhole involved

8. Cause of Incident:
- | | |
|--|--|
| <input checked="" type="checkbox"/> Intentional Bypass for Repair/Construction | <input type="checkbox"/> Equipment Failure |
| <input type="checkbox"/> Excessive Rainfall, Snow Melt | <input type="checkbox"/> Control System Failure |
| <input type="checkbox"/> Unplanned Construction Related Break | <input type="checkbox"/> Power Related Failure |
| <input type="checkbox"/> City Line Break (Not Construction Related) | <input type="checkbox"/> Operations Related Failure |
| <input type="checkbox"/> City Line Blockage | <input type="checkbox"/> Maintenance Related Failure |
| <input type="checkbox"/> Private Line Break | <input type="checkbox"/> Vandalism |
| <input type="checkbox"/> Private Line Blockage | <input type="checkbox"/> Other |
| <input type="checkbox"/> Lagoon High Level | |

Additional explanation of reason for Incident: (use additional page if necessary)
While performing pressure test on forced main contractor needed to break line so WPC could cctv in both direction because pressure test failed. This intentional break cause 1600 gallon of water that was used for the test to leak into a ditch. No water flowed to the storm drain or creek nearby. Also this lift station has never pumped sewage since it was constructed 10 years ago.

9. Corrective Action, if any: (use additional page if necessary)
One the camera work is completed and pressure test are certified the line will be put back together.

Name: Chuck Staples Date: 10/13/17
Title: Superintendent Phone: 913-682-1090

When Completed, E-mail to: cseeds@kdheks.gov
Kansas Department of Health & Environment – Attn: Chris Seeds

**KANSAS DEPARTMENT OF HEALTH AND ENVIRONMENT
WASTEWATER INCIDENT REPORT FORM**

Definitions are available at <http://www.kdheks.gov/water/tech.html>

Collection System Bypass In-Plant Diversion Upset In-Plant Flow Through Spill

1. FACILITY NAME: City of Leavenworth Kansas Permit # M-M012-I001
2. Within 24 hours of discovery, notify the KDHE Central Office (email – cseeds@kdheks.gov), (fax 785.296.0086), (telephone 785.296.5517) or your local KDHE district office. Written notification is required within 5 days of discovery. If the incident is not corrected within 5 days, send a written notification to KDHE indicating the status. This form is to be sent to KDHE when the incident ends.

KDHE Person Contacted: Chris Seeds Date: 8/24/17 Time: 10:47 AM

3. Date Incident Discovered: 8/21/2017 Time: 10:40 PM
4. Date Incident Ended: _____ Time: 11:00 PM
5. Total estimated gallons bypassed, spilled, or routed through failed equipment for all locations on this form: Unknown
6. If rainfall induced event, approximate inches of rainfall 4.5 TO 6.0
If multiple locations listed below due to rain event, check here

7. Incident Location: (check all that apply)

- | | |
|--|--|
| <input type="checkbox"/> Plant | <input type="checkbox"/> City Collection Line (Line Break / Joint) |
| <input type="checkbox"/> Lift/Pump Station | <input type="checkbox"/> Private Sewer Line |
| <input type="checkbox"/> Peak Flow Basin | <input checked="" type="checkbox"/> Basement |
| <input type="checkbox"/> Manhole(s) | <input type="checkbox"/> Other (specify below) |

Identify All Incident Locations by Name, Street Address or Manhole Number as appropriate.

J. F. Denney plumbing called stating that the house at 1042 Wallis Lane was getting water in their basement. The upstream manhole is 3140 and the downstream manhole is 3140.

8. Cause of Incident:

- | | |
|---|--|
| <input type="checkbox"/> Intentional Bypass for Repair/Construction | <input type="checkbox"/> Equipment Failure |
| <input type="checkbox"/> Excessive Rainfall, Snow Melt | <input type="checkbox"/> Control System Failure |
| <input type="checkbox"/> Unplanned Construction Related Break | <input type="checkbox"/> Power Related Failure |
| <input type="checkbox"/> City Line Break (Not Construction Related) | <input type="checkbox"/> Operations Related Failure |
| <input type="checkbox"/> City Line Blockage | <input type="checkbox"/> Maintenance Related Failure |
| <input type="checkbox"/> Private Line Break | <input type="checkbox"/> Vandalism |
| <input type="checkbox"/> Private Line Blockage | <input checked="" type="checkbox"/> Other |
| <input type="checkbox"/> Lagoon High Level | |

Additional explanation of reason for Incident: (use additional page if necessary)

upon initial investigated we determined that since there was no manhole backed up that this was a storm water issue since there is a 36 inch storm line running between the housed. Also the neighbor at 1046 stating he had water in his basemnet also. Yesterday 8/23.17 we were called by the owner at 4317 Grand Ave stating he had mud in his basement.

9. Corrective Action, if any: (use additional page if necessary)

After cctv of the strom line we determined that this was not the cause of the overflow into the basements. What we found late yesterday was that the contractor has left two manholes open durning the rain event and mud and water had infiltrated the sewer line causeing these overflow. The contractor is closing the manholes today.

Name: Chuck Staples

Date: 8/24/17

Chuck Staples

From: Chuck Staples
Sent: Tuesday, January 09, 2018 12:50 PM
To: Chris A Seeds (Chris.Seeds@ks.gov)
Subject: Report dated 8/24/17

Chris: We noticed on the KDHE report(dated 8/24/17 for the address of 1042 Wallis lane) did not have an date when the incident ended. That date should read 8/21/17. Let me know if you have any questions.

**KANSAS DEPARTMENT OF HEALTH AND ENVIRONMENT
WASTEWATER INCIDENT REPORT FORM**

Definitions are available at <http://www.kdheks.gov/water/tech.html>

Collection System Bypass In-Plant Diversion Upset In-Plant Flow Through Spill

1. FACILITY NAME: City of Leavenworth Kansas Permit # M-M012-I001
 2. Within 24 hours of discovery, notify the KDHE Central Office (email – cseeds@kdheks.gov), (fax 785.296.0086), (telephone 785.296.5517) or your local KDHE district office. Written notification is required within 5 days of discovery. If the incident is not corrected within 5 days, send a written notification to KDHE indicating the status. This form is to be sent to KDHE when the incident ends.

KDHE Person Contacted: Chris Seeds Date: 8/28/17 Time: 10:06 AM

3. Date Incident Discovered: 8/26/2017 Time: 12:39 PM
 4. Date Incident Ended: 8/26/2017 Time: 4:00 PM
 5. Total estimated gallons bypassed, spilled, or routed through failed equipment for all locations on this form: Un known contained in basement
 6. If rainfall induced event, approximate inches of rainfall n/a
 If multiple locations listed below due to rain event, check here

7. Incident Location: (check all that apply)
- | | |
|--|--|
| <input type="checkbox"/> Plant | <input type="checkbox"/> City Collection Line (Line Break / Joint) |
| <input type="checkbox"/> Lift/Pump Station | <input checked="" type="checkbox"/> Private Sewer Line |
| <input type="checkbox"/> Peak Flow Basin | <input checked="" type="checkbox"/> Basement |
| <input type="checkbox"/> Manhole(s) | <input type="checkbox"/> Other (specify below) |

Identify **All** Incident Locations by Name, Street Address or Manhole Number as appropriate.
 Sandra Bohner called stating that the houe at 1120 Dakota S had water backing up in the basement.
 The upstream manhole is 0058 and the downstream manhole is 0077.

8. Cause of Incident:
- | | |
|---|--|
| <input type="checkbox"/> Intentional Bypass for Repair/Construction | <input type="checkbox"/> Equipment Failure |
| <input type="checkbox"/> Excessive Rainfall, Snow Melt | <input type="checkbox"/> Control System Failure |
| <input type="checkbox"/> Unplanned Construction Related Break | <input type="checkbox"/> Power Related Failure |
| <input type="checkbox"/> City Line Break (Not Construction Related) | <input type="checkbox"/> Operations Related Failure |
| <input type="checkbox"/> City Line Blockage | <input type="checkbox"/> Maintenance Related Failure |
| <input type="checkbox"/> Private Line Break | <input type="checkbox"/> Vandalism |
| <input checked="" type="checkbox"/> Private Line Blockage | <input type="checkbox"/> Other |
| <input type="checkbox"/> Lagoon High Level | |

Additional explanation of reason for Incident: (use additional page if necessary)
 Upon arrival our crew checked the manholes and had good flow. We rodded for 148 feet and had no problems.

9. Corrective Action, if any: (use additional page if necessary)
 I contacted the owner and infomed her that the City lines are flowing good and she needed to call a plumber. This is a private line issue.

Name: Chuck Staples Date: 8/28/17
 Title: Superintendent Phone: 913-682-1090

When Completed, E-mail to: cseeds@kdheks.gov
 Kansas Department of Health & Environment – Attn: Chris Seeds

**KANSAS DEPARTMENT OF HEALTH AND ENVIRONMENT
WASTEWATER INCIDENT REPORT FORM**

Definitions are available at <http://www.kdheks.gov/water/tech.html>

Collection System Bypass In-Plant Diversion Upset In-Plant Flow Through Spill

1. FACILITY NAME: City of Leavenworth Kansas Permit # M-M012-I001
2. Within 24 hours of discovery, notify the KDHE Central Office (email – cseeds@kdheks.gov), (fax 785.296.0086), (telephone 785.296.5517) or your local KDHE district office. Written notification is required within 5 days of discovery. If the incident is not corrected within 5 days, send a written notification to KDHE indicating the status. This form is to be sent to KDHE when the incident ends.

KDHE Person Contacted: Chris Seeds Date: 8/28/17 Time: 10:18 pm

3. Date Incident Discovered: 8/26/2017 Time: 12:00 pm

4. Date Incident Ended: 8/26/2017 Time: 3:45 pm

5. Total estimated gallons bypassed, spilled, or routed through failed equipment for all locations on this form: Unknown contained in basement

6. If rainfall induced event, approximate inches of rainfall n/a

If multiple locations listed below due to rain event, check here

7. Incident Location: (check all that apply)

- | | |
|--|--|
| <input type="checkbox"/> Plant | <input type="checkbox"/> City Collection Line (Line Break / Joint) |
| <input type="checkbox"/> Lift/Pump Station | <input type="checkbox"/> Private Sewer Line |
| <input type="checkbox"/> Peak Flow Basin | <input checked="" type="checkbox"/> Basement |
| <input checked="" type="checkbox"/> Manhole(s) | <input type="checkbox"/> Other (specify below) |

Identify All Incident Locations by Name, Street Address or Manhole Number as appropriate.

John Holt called stating that he had water in his basement and that the manhole upstream was holding water. The address is 1215 Olive St. and the upstream manhole is 0385.1 and the downstream manhole is 0393.

8. Cause of Incident:

- | | |
|---|--|
| <input type="checkbox"/> Intentional Bypass for Repair/Construction | <input type="checkbox"/> Equipment Failure |
| <input type="checkbox"/> Excessive Rainfall, Snow Melt | <input type="checkbox"/> Control System Failure |
| <input type="checkbox"/> Unplanned Construction Related Break | <input type="checkbox"/> Power Related Failure |
| <input type="checkbox"/> City Line Break (Not Construction Related) | <input type="checkbox"/> Operations Related Failure |
| <input checked="" type="checkbox"/> City Line Blockage | <input type="checkbox"/> Maintenance Related Failure |
| <input type="checkbox"/> Private Line Break | <input type="checkbox"/> Vandalism |
| <input type="checkbox"/> Private Line Blockage | <input type="checkbox"/> Other |
| <input type="checkbox"/> Lagoon High Level | |

Additional explanation of reason for Incident: (use additional page if necessary)

~~Upon arrival we were informed the the upstream manhole was holding water and when we started to rod from the downstream we could only get 8 feet. There is a bend in the pipe at that distance. We started to vactor out the upstream manhole and when the water was out we rodded from that manhole and cleared the blockage.~~

9. Corrective Action, if any: (use additional page if necessary)

Once the blockage was cleared we informed the owner that we will return on Monday August 28 to cctv this line to find out what caused the blockage. This is a City line issue.

Name: Chuck Staples

Date: 8/28/17

Title: Superintendent

Phone: 913-682-1090

**KANSAS DEPARTMENT OF HEALTH AND ENVIRONMENT
WASTEWATER BYPASS REPORT FORM**

1. FACILITY NAME: Fort Leavenworth Kansas Permit # M-MO12-IO 01

2. Within 24 Hours of Discovery, Notify the KDHE Central Office (email – cseeds@kdhe.state.ks.us), (fax 785.296.0086), (telephone 785.296.5517) or your KDHE local district office. Written notification required within 5 days of discovery.

KDHE Person Contacted: Chris Seeds Date: 10/4/2017 Time: 8:30am

3. Date Bypass Discovered: 10/3/2017 Time: 3:20pm

4. Date Bypass Ended: 10/3/2017 Time: 4:04pm

5. Total Estimated Gallons Bypassed for All Locations on this Form: 550

6. If rainfall event, approximate inches of rainfall N/A

If multiple bypass locations listed below due to rain event, check here _____

7. Bypass Location: (check all that apply)

- | | |
|---|--|
| <input type="checkbox"/> Plant | <input type="checkbox"/> City Collection Line |
| <input type="checkbox"/> Lift/Pump Station | <input type="checkbox"/> Private Sewer Line |
| <input type="checkbox"/> Peak Flow Basin | <input type="checkbox"/> Other (specify below) |
| <input checked="" type="checkbox"/> Manhole(s) (list manhole #'s below) | |
| <u>05-1702</u> | |

8. Cause of Bypass: (definitions available at <http://www.kdheks.gov/water/tech.html>)

- | | |
|---|--|
| <input type="checkbox"/> Intentional Bypass for Repair/Construction | <input type="checkbox"/> Equipment Failure |
| <input type="checkbox"/> Excessive Rainfall, Snow Melt | <input type="checkbox"/> Control System Failure |
| <input type="checkbox"/> Unplanned Construction Related Break | <input type="checkbox"/> Power Related Failure |
| <input type="checkbox"/> City Line Break (Not Construction Related) | <input type="checkbox"/> Operations Related Failure |
| <input checked="" type="checkbox"/> City Line Blockage | <input type="checkbox"/> Maintenance Related Failure |
| <input type="checkbox"/> Private Line Break | <input type="checkbox"/> Vandalism |
| <input type="checkbox"/> Private Line Blockage | <input type="checkbox"/> Spill |
| <input type="checkbox"/> Lagoon High Level | <input checked="" type="checkbox"/> Other |

Additional explanation of reason for bypass: (use additional page if necessary)
Bypass occurred due to root intrusion which lead to grease accumulation.

9. Corrective Action, if any: (use additional page if necessary)

The sewer line was jetted and the line is in the preventative maintenance plan.

Name: Andrew J. Turner Date: 10/4/2017

Title: Environmental, Health and Safety Specialist

When Completed, Mail to: Kansas Department of Health and Environment
Attn: Chris Seeds
1000 SW Jackson St., Suite 420
Topeka, KS 66612-1367

**KANSAS DEPARTMENT OF HEALTH AND ENVIRONMENT
WASTEWATER INCIDENT REPORT FORM**

Definitions are available at <http://www.kdheks.gov/water/tech.html>

Collection System Bypass In-Plant Diversion Upset In-Plant Flow Through Spill

1. FACILITY NAME: City of Leavenworth Kansas Permit # M-M012-I001
 2. Within 24 hours of discovery, notify the KDHE Central Office (email – cseeds@kdheks.gov), (fax 785.296.0086), (telephone 785.296.5517) or your local KDHE district office. Written notification is required within 5 days of discovery. If the incident is not corrected within 5 days, send a written notification to KDHE indicating the status. This form is to be sent to KDHE when the incident ends.

KDHE Person Contacted: Chris Seeds Date: 10/23/17 Time: 9:35 am

3. Date Incident Discovered: 10/20/2017 Time: 8:15 am
 4. Date Incident Ended: 10/20/2017 Time: 9:20 pm
 5. Total estimated gallons bypassed, spilled, or routed through failed equipment for all locations on this form: Unknown, contained in basement
 6. If rainfall induced event, approximate inches of rainfall n/a
 If multiple locations listed below due to rain event, check here

7. Incident Location: (check all that apply)
- | | |
|--|--|
| <input type="checkbox"/> Plant | <input type="checkbox"/> City Collection Line (Line Break / Joint) |
| <input type="checkbox"/> Lift/Pump Station | <input type="checkbox"/> Private Sewer Line |
| <input type="checkbox"/> Peak Flow Basin | <input checked="" type="checkbox"/> Basement |
| <input type="checkbox"/> Manhole(s) | <input type="checkbox"/> Other (specify below) |

Identify **All** Incident Locations by Name, Street Address or Manhole Number as appropriate.
Mr. Quinn Whimley called stating our main line was backing up at 431 Topeka Ave. The ustream manhole is 1279 and the downstream manhole is 1278.

8. Cause of Incident:
- | | |
|---|--|
| <input type="checkbox"/> Intentional Bypass for Repair/Construction | <input type="checkbox"/> Equipment Failure |
| <input type="checkbox"/> Excessive Rainfall, Snow Melt | <input type="checkbox"/> Control System Failure |
| <input type="checkbox"/> Unplanned Construction Related Break | <input type="checkbox"/> Power Related Failure |
| <input type="checkbox"/> City Line Break (Not Construction Related) | <input type="checkbox"/> Operations Related Failure |
| <input type="checkbox"/> City Line Blockage | <input type="checkbox"/> Maintenance Related Failure |
| <input type="checkbox"/> Private Line Break | <input type="checkbox"/> Vandalism |
| <input checked="" type="checkbox"/> Private Line Blockage | <input type="checkbox"/> Other |
| <input type="checkbox"/> Lagoon High Level | |

Additional explanation of reason for Incident: (use additional page if necessary)
Upon arrival our crew checked the up and downstream manholes and we had good flow. We rodde 277feet and had no problems. As our POC approached the house the plumber working had broken through the blockage in the lateral. We noticed they had some water around the floor drain.

9. Corrective Action, if any: (use additional page if necessary)

Name: Chuck Staples Date: 10/23/17
 Title: Superintendent Phone: 913-682-1090

When Completed, E-mail to: cseeds@kdheks.gov
 Kansas Department of Health & Environment – Attn: Chris Seeds

KANSAS DEPARTMENT OF HEALTH AND ENVIRONMENT
WASTEWATER INCIDENT REPORT FORM

FPO2
10/28/17 *Federal*
Prison
KDHE

Definitions are available at <http://www.kdheks.gov/water/tech.html>

Collection System Bypass In-Plant Diversion Upset In-Plant Flow Through Spill

1. FACILITY NAME: USP LEAVENWORTH Kansas Permit # FMO12P006
2. Within 24 hours of discovery, notify the KDHE Central Office (email – cseeds@kdheks.gov), (fax 785.296.0086), (telephone 785.296.5517) or your local KDHE district office. Written notification is required within 5 days of discovery. If the incident is not corrected within 5 days, send a written notification to KDHE indicating the status. This form is to be sent to KDHE when the incident ends.

IF THE INCIDENT IS AFTER HOURS AND REPRESENTS A SIGNIFICANT PUBLIC HEALTH THREAT CALL 785.296.1679 IMMEDIATELY

KDHE Person Contacted: HELEN HOLME Date: 11/02/2017 Time: 09:00 AM

3. Date Incident Discovered: 10/28/2017 Time: 08:30 AM
4. Date Incident Ended: 10/28/2017 Time: 08:35 AM

5. Total estimated gallons bypassed, spilled, or routed through failed equipment for all locations on this form: 75 GALLONS

6. If rainfall induced event, approximate inches of rainfall _____
If multiple locations listed below due to rain event, check here

7. Incident Location: (check all that apply)

- | | |
|---|--|
| <input type="checkbox"/> Plant | <input type="checkbox"/> City Collection Line (Line Break / Joint) |
| <input checked="" type="checkbox"/> Lift/Pump Station | <input type="checkbox"/> Private Sewer Line |
| <input type="checkbox"/> Peak Flow Basin | <input type="checkbox"/> Basement |
| <input type="checkbox"/> Manhole(s) | <input type="checkbox"/> Other (specify below) |

Identify **All** Incident Locations by Name, Street Address or Manhole Number as appropriate.

LIFT STATION LOCATED ON 1300 METROPOLITAN AVE

8. Cause of Incident:

- | | |
|---|---|
| <input type="checkbox"/> Intentional Bypass for Repair/Construction | <input checked="" type="checkbox"/> Equipment Failure |
| <input type="checkbox"/> Excessive Rainfall, Snow Melt | <input type="checkbox"/> Control System Failure |
| <input type="checkbox"/> Unplanned Construction Related Break | <input type="checkbox"/> Power Related Failure |
| <input type="checkbox"/> City Line Break (Not Construction Related) | <input type="checkbox"/> Operations Related Failure |
| <input type="checkbox"/> City Line Blockage | <input type="checkbox"/> Maintenance Related Failure |
| <input type="checkbox"/> Private Line Break | <input type="checkbox"/> Vandalism |
| <input type="checkbox"/> Private Line Blockage | <input type="checkbox"/> Other |
| <input type="checkbox"/> Lagoon High Level | |

Additional explanation of reason for Incident: (use additional page if necessary)

WHEN THE #1 PUMP WENT DOWN THE Back UP DID NOT TURN ON.

9. Corrective Action, if any: (use additional page if necessary)

This HAPPENED DURING THE PROCESS OF INSTALLING NEW PUMPS AND PANEL BOARD IS IS COMPLETE NOW AND WORKING

Name: BILLYE E CORDELL Date: 11/01/2017

Title: SAFETY MANAGER Phone: 913-578-1387

When Completed, E-mail to: cseeds@kdheks.gov
Kansas Department of Health & Environment – Attn: Chris Seeds
Or Mail to: 1000 SW Jackson St., Suite 420, Topeka , KS 66612-1367
Fax 785.296.0086

**KANSAS DEPARTMENT OF HEALTH AND ENVIRONMENT
WASTEWATER INCIDENT REPORT FORM**

Definitions are available at <http://www.kdheks.gov/water/tech.html>

Collection System Bypass In-Plant Diversion Upset In-Plant Flow Through Spill

1. FACILITY NAME: City of Leavenworth Kansas Permit # M-M012-I001
2. Within 24 hours of discovery, notify the KDHE Central Office (email – cseeds@kdheks.gov), (fax 785.296.0086), (telephone 785.296.5517) or your local KDHE district office. Written notification is required within 5 days of discovery. If the incident is not corrected within 5 days, send a written notification to KDHE indicating the status. This form is to be sent to KDHE when the incident ends.

KDHE Person Contacted: Chris Seeds Date: 11/13/17 Time: 10:08 am

3. Date Incident Discovered: 11/5/2017 Time: 8:30 am
4. Date Incident Ended: 11/10/2017 Time: 12:15 pm
5. Total estimated gallons bypassed, spilled, or routed through failed equipment for all locations on this form: 10 gallons
6. If rainfall induced event, approximate inches of rainfall n/a
If multiple locations listed below due to rain event, check here

7. Incident Location: (check all that apply)

- | | |
|--|--|
| <input type="checkbox"/> Plant | <input type="checkbox"/> City Collection Line (Line Break / Joint) |
| <input type="checkbox"/> Lift/Pump Station | <input checked="" type="checkbox"/> Private Sewer Line |
| <input type="checkbox"/> Peak Flow Basin | <input type="checkbox"/> Basement |
| <input type="checkbox"/> Manhole(s) | <input type="checkbox"/> Other (specify below) |

Identify **All** Incident Locations by Name, Street Address or Manhole Number as appropriate.
The owner at 802 9th street called stating there was sewage running down the street. The owner of the line causing the problem was at 914 Olive st. This is a private lateral.

8. Cause of Incident:

- | | |
|---|--|
| <input type="checkbox"/> Intentional Bypass for Repair/Construction | <input type="checkbox"/> Equipment Failure |
| <input type="checkbox"/> Excessive Rainfall, Snow Melt | <input type="checkbox"/> Control System Failure |
| <input type="checkbox"/> Unplanned Construction Related Break | <input type="checkbox"/> Power Related Failure |
| <input type="checkbox"/> City Line Break (Not Construction Related) | <input type="checkbox"/> Operations Related Failure |
| <input type="checkbox"/> City Line Blockage | <input type="checkbox"/> Maintenance Related Failure |
| <input type="checkbox"/> Private Line Break | <input type="checkbox"/> Vandalism |
| <input checked="" type="checkbox"/> Private Line Blockage | <input type="checkbox"/> Other |
| <input type="checkbox"/> Lagoon High Level | |

Additional explanation of reason for Incident: (use additional page if necessary)

We dyed the lateral of the homes on Olive Street and was able to identify the lateral causing the problem. We cleaned up the area and placed containment socks.

9. Corrective Action, if any: (use additional page if necessary)

We contacted the owner and continued to monitor the area until a plumber was able to clean out the line on November 10 at 12:15 pm.

Name: Chuck Staples Date: 11/13/17
Title: Superintendent Phone: 913-682-1090

When Completed, E-mail to: cseeds@kdheks.gov
Kansas Department of Health & Environment – Attn: Chris Seeds

**KANSAS DEPARTMENT OF HEALTH AND ENVIRONMENT
WASTEWATER INCIDENT REPORT FORM**

Definitions are available at <http://www.kdheks.gov/water/tech.html>

Collection System Bypass In-Plant Diversion Upset In-Plant Flow Through Spill

1. FACILITY NAME: City of Leavenworth Kansas Permit # M-M012-I001
2. Within 24 hours of discovery, notify the KDHE Central Office (email – cseeds@kdheks.gov), (fax 785.296.0086), (telephone 785.296.5517) or your local KDHE district office. Written notification is required within 5 days of discovery. If the incident is not corrected within 5 days, send a written notification to KDHE indicating the status. This form is to be sent to KDHE when the incident ends.

KDHE Person Contacted: Chris Seeds Date: 12/6/17 Time: 2:58 pm

3. Date Incident Discovered: 12/6/2017 Time: 10:15 am
4. Date Incident Ended: 12/6/2017 Time: 2:30 pm
5. Total estimated gallons bypassed, spilled, or routed through failed equipment for all locations on this form: two gallons
6. If rainfall induced event, approximate inches of rainfall n/a
If multiple locations listed below due to rain event, check here

7. Incident Location: (check all that apply)

- | | |
|--|--|
| <input type="checkbox"/> Plant | <input type="checkbox"/> City Collection Line (Line Break / Joint) |
| <input type="checkbox"/> Lift/Pump Station | <input checked="" type="checkbox"/> Private Sewer Line |
| <input type="checkbox"/> Peak Flow Basin | <input type="checkbox"/> Basement |
| <input type="checkbox"/> Manhole(s) | <input type="checkbox"/> Other (specify below) |

Identify All Incident Locations by Name, Street Address or Manhole Number as appropriate.

Ryan from Westar Energy called stating that while installing a power pole they hit the lateral at 2421 South 15th street.

8. Cause of Incident:

- | | |
|--|--|
| <input type="checkbox"/> Intentional Bypass for Repair/Construction | <input type="checkbox"/> Equipment Failure |
| <input type="checkbox"/> Excessive Rainfall, Snow Melt | <input type="checkbox"/> Control System Failure |
| <input checked="" type="checkbox"/> Unplanned Construction Related Break | <input type="checkbox"/> Power Related Failure |
| <input type="checkbox"/> City Line Break (Not Construction Related) | <input type="checkbox"/> Operations Related Failure |
| <input type="checkbox"/> City Line Blockage | <input type="checkbox"/> Maintenance Related Failure |
| <input type="checkbox"/> Private Line Break | <input type="checkbox"/> Vandalism |
| <input type="checkbox"/> Private Line Blockage | <input type="checkbox"/> Other |
| <input type="checkbox"/> Lagoon High Level | |

Additional explanation of reason for Incident: (use additional page if necessary)

Upon arrival our crew informed Westar that they would need to fix the lateral and also call the City inspector prior to filling up the hole with dirt. This was a contractor-caused overflow.

9. Corrective Action, if any: (use additional page if necessary)

Westar Energy called a plumbing and the line was back in service at 2:30 pm today.

Name: Chuck Staples

Date: 12/06/17

Title: Superintendent

Phone: 913-682-1090

When Completed, E-mail to: cseeds@kdheks.gov

Kansas Department of Health & Environment – Attn: Chris Seeds

Or Mail to: 1000 SW Jackson St., Suite 420, Topeka, KS 66612-1367

**KANSAS DEPARTMENT OF HEALTH AND ENVIRONMENT
WASTEWATER INCIDENT REPORT FORM**

Definitions are available at <http://www.kdheks.gov/water/tech.html>

Collection System Bypass In-Plant Diversion Upset In-Plant Flow Through Spill

1. FACILITY NAME: City of Leavenworth Kansas Permit # M-M012-1001

2. Within 24 hours of discovery, notify the KDHE Central Office (email – cseeds@kdheks.gov), (fax 785.296.0086), (telephone 785.296.5517) or your local KDHE district office. Written notification is required within 5 days of discovery. If the incident is not corrected within 5 days, send a written notification to KDHE indicating the status. This form is to be sent to KDHE when the incident ends.

KDHE Person Contacted: Chris Seeds Date: 12/26/17 Time: 8:05 am

3. Date Incident Discovered: 12/23/2017 Time: 10:06 am

4. Date Incident Ended: 12/23/2017 Time: 11:00am

5. Total estimated gallons bypassed, spilled, or routed through failed equipment for all locations on this form: Unknown contained in basement

6. If rainfall induced event, approximate inches of rainfall n/a

If multiple locations listed below due to rain event, check here

7. Incident Location: (check all that apply)

- | | |
|--|--|
| <input type="checkbox"/> Plant | <input type="checkbox"/> City Collection Line (Line Break / Joint) |
| <input type="checkbox"/> Lift/Pump Station | <input type="checkbox"/> Private Sewer Line |
| <input type="checkbox"/> Peak Flow Basin | <input checked="" type="checkbox"/> Basement |
| <input type="checkbox"/> Manhole(s) | <input type="checkbox"/> Other (specify below) |

Identify All Incident Locations by Name, Street Address or Manhole Number as appropriate.

Mr. Tuttle called stating he had sewer backing up in his basement at 1030 Randolph st. The upstream manhole is 0423 and the downstream manhole is 0423.1

8. Cause of Incident:

- | | |
|---|--|
| <input type="checkbox"/> Intentional Bypass for Repair/Construction | <input type="checkbox"/> Equipment Failure |
| <input type="checkbox"/> Excessive Rainfall, Snow Melt | <input type="checkbox"/> Control System Failure |
| <input type="checkbox"/> Unplanned Construction Related Break | <input type="checkbox"/> Power Related Failure |
| <input type="checkbox"/> City Line Break (Not Construction Related) | <input type="checkbox"/> Operations Related Failure |
| <input type="checkbox"/> City Line Blockage | <input type="checkbox"/> Maintenance Related Failure |
| <input checked="" type="checkbox"/> Private Line Break | <input type="checkbox"/> Vandalism |
| <input type="checkbox"/> Private Line Blockage | <input type="checkbox"/> Other |
| <input type="checkbox"/> Lagoon High Level | |

Additional explanation of reason for Incident: (use additional page if necessary)

Upon arrival we checked our lines and had good flow but we cleaned 200 feet with no problems.

9. Corrective Action, if any: (use additional page if necessary)

We talked to the owner and informed him he needed to call a plumber. This is a private line issue.

Name: Chuck Staples Date: 12/26/17

Title: Superintendent Phone: 913-682-1090

When Completed, E-mail to: cseeds@kdheks.gov

Kansas Department of Health & Environment – Attn: Chris Seeds

Or Mail to: 1000 SW Jackson St., Suite 420, Topeka, KS 66612-1367

Fax 785.296.0086

KANSAS DEPARTMENT OF HEALTH AND ENVIRONMENT
WASTEWATER BYPASS REPORT FORM

Fort
Leavenworth

1. FACILITY NAME: Fort Leavenworth Kansas Permit # M-MO12-IO 01

2. Within 24 Hours of Discovery, Notify the KDHE Central Office (email – cseeds@kdhe.state.ks.us), (fax 785.296.0086), (telephone 785.296.5517) or your KDHE local district office. Written notification required within 5 days of discovery.

KDHE Person Contacted: Cris Seeds Date: 12/27/2017 Time: 2:53pm

3. Date Bypass Discovered: 12/27/2017 Time: 2:00pm

4. Date Bypass Ended: 12/27/2017 Time: 2:30pm

5. Total Estimated Gallons Bypassed for All Locations on this Form: 5 gallons

6. If rainfall event, approximate inches of rainfall N/A

If multiple bypass locations listed below due to rain event, check here N/A

7. Bypass Location: (check all that apply)

| | |
|--|--|
| <input type="checkbox"/> Plant | <input type="checkbox"/> City Collection Line |
| <input type="checkbox"/> Lift/Pump Station | <input checked="" type="checkbox"/> Private Sewer Line |
| <input type="checkbox"/> Peak Flow Basin | <input type="checkbox"/> Other (specify below) |
| <input type="checkbox"/> Manhole(s) (list manhole #'s below) | |

8. Cause of Bypass: (definitions available at <http://www.kdheks.gov/water/tech.html>)

| | |
|---|--|
| <input type="checkbox"/> Intentional Bypass for Repair/Construction | <input type="checkbox"/> Equipment Failure |
| <input type="checkbox"/> Excessive Rainfall, Snow Melt | <input type="checkbox"/> Control System Failure |
| <input type="checkbox"/> Unplanned Construction Related Break | <input type="checkbox"/> Power Related Failure |
| <input type="checkbox"/> City Line Break (Not Construction Related) | <input type="checkbox"/> Operations Related Failure |
| <input type="checkbox"/> City Line Blockage | <input type="checkbox"/> Maintenance Related Failure |
| <input type="checkbox"/> Private Line Break | <input type="checkbox"/> Vandalism |
| <input checked="" type="checkbox"/> Private Line Blockage | <input type="checkbox"/> Spill |
| <input type="checkbox"/> Lagoon High Level | <input type="checkbox"/> Other |

Additional explanation of reason for bypass: (use additional page if necessary)
Back up caused by tree roots.

9. Corrective Action, if any: (use additional page if necessary)
Called Servpro on 12/27/2017 to have them come out and clean up the sewage.

Name: Andrew Turner Date: 12/27/2017

Title: Environmental, Health and Safety Specialist

When Completed, Mail to: Kansas Department of Health and Environment
Attn: Chris Seeds
1000 SW Jackson St., Suite 420
Topeka, KS 66612-1367

**KANSAS DEPARTMENT OF HEALTH AND ENVIRONMENT
WASTEWATER INCIDENT REPORT FORM**

Definitions are available at <http://www.kdheks.gov/water/tech.html>

Collection System Bypass In-Plant Diversion Upset In-Plant Flow Through Spill

1. FACILITY NAME: City of Leavenworth Kansas Permit # M-M012-I001
 2. Within 24 hours of discovery, notify the KDHE Central Office (email – cseeds@kdheks.gov), (fax 785.296.0086), (telephone 785.296.5517) or your local KDHE district office. Written notification is required within 5 days of discovery. If the incident is not corrected within 5 days, send a written notification to KDHE indicating the status. This form is to be sent to KDHE when the incident ends.

KDHE Person Contacted: Chris Seeds Date: 12/29/17 Time: 10:12 AM

3. Date Incident Discovered: 12/27/2017 Time: 4:16 PM
 4. Date Incident Ended: 12/27/2017 Time: 5:00 PM
 5. Total estimated gallons bypassed, spilled, or routed through failed equipment for all locations on this form: 10,000 Gallons of Treated Water
 6. If rainfall induced event, approximate inches of rainfall n/a
 If multiple locations listed below due to rain event, check here

7. Incident Location: (check all that apply)
- | | |
|--|--|
| <input type="checkbox"/> Plant | <input type="checkbox"/> City Collection Line (Line Break / Joint) |
| <input type="checkbox"/> Lift/Pump Station | <input type="checkbox"/> Private Sewer Line |
| <input type="checkbox"/> Peak Flow Basin | <input type="checkbox"/> Basement |
| <input checked="" type="checkbox"/> Manhole(s) | <input type="checkbox"/> Other (specify below) |

Identify **All** Incident Locations by Name, Street Address or Manhole Number as appropriate.
 WPC employee leaving work noticed water running onto the street from a manhole at 1906 5th Ave.
 The upstream manhole is 0753 and the downstream manhole is 0753.

8. Cause of Incident:
- | | |
|--|--|
| <input type="checkbox"/> Intentional Bypass for Repair/Construction | <input type="checkbox"/> Equipment Failure |
| <input type="checkbox"/> Excessive Rainfall, Snow Melt | <input type="checkbox"/> Control System Failure |
| <input checked="" type="checkbox"/> Unplanned Construction Related Break | <input type="checkbox"/> Power Related Failure |
| <input type="checkbox"/> City Line Break (Not Construction Related) | <input type="checkbox"/> Operations Related Failure |
| <input type="checkbox"/> City Line Blockage | <input type="checkbox"/> Maintenance Related Failure |
| <input type="checkbox"/> Private Line Break | <input type="checkbox"/> Vandalism |
| <input type="checkbox"/> Private Line Blockage | <input checked="" type="checkbox"/> Other |
| <input type="checkbox"/> Lagoon High Level | |

Additional explanation of reason for Incident: (use additional page if necessary)
 The City Water Department had a 8 inch water main break and the water got into the sanitary sewer causing water to backup and flow out of the manhole.

9. Corrective Action, if any: (use additional page if necessary)
 Once the water department shut off the valve the water receded and normal flow returned. We placed contaminated creek sign out and have taken e-coli samples. We are going to camera the line to see where the water entered the main.

Name: Chuck Staples Date: 12/29/17
 Title: Superintendent Phone: 913-682-1090

When Completed, E-mail to: cseeds@kdheks.gov

MAINTENANCE City of Leavenworth

Alternate lines done in odd months.
Alternate lines highlighted in gray.

Current as of 1-2 -2018

| LOCATION | UP/DOWN MH | FOOTAGE | DATE/TIME | FLUSH | ROD | CHECK | CREW | VEHICLE | REASON/PROBLEM |
|--|--------------------------|------------|-----------|-------|-----|-------|------|---------|---|
| 1320 S 4TH ST | 0619-0627 | 374 | | | | | | | Sags 112' from MH 4207 |
| 210 ELM ST. | 0614-0613.1 | 620 | | | | | | | MH 0613.1 collects debris |
| 306 S. 3RD ST. | 0195-0194 | 408 | | | | | | | Severe sags |
| 100 N. 5th St. | 0228-0227 | 828 | | | | | | | Sewer smell in city hall |
| 401 DELAWARE ST. | 0270-0269.1 | 391.5 | | | | | | | Sags and Grease |
| 1006 N. 7TH ST. | 0009-0012 | 428 | | | | | | | Sags and Grease |
| 914 BROADWAY ST | 0065-0065.1 | 180 | | | | | | | Sags and Grease |
| 744 POTTAWATOMIE | 0165.1-0166 | 1000 | | | | | | | Clean downstream flat |
| 8TH & POTTAWATOMIE | 0167-0168 | 200 | | | | | | | Sags and Grease |
| 611 N. BROADWAY | 0150.2-0150.1 | 55 | | | | | | | Line is Flat |
| 11TH & KIOWA | 0125.1-0125 | 200 | | | | | | | Severe sags |
| 1500 PAWNEE ST. | 1160-1635 | 501 | | | | | | | Sag 28' East MH 1159 |
| 14TH & MIAMI | 1291-1290 | 168 | | | | | | | Sags |
| 2049 MARJORIE CIR GRAND AVE & IRONMOULDERS | 1764-1763 0436-0436.1 | 144 159 | | | | | | | Sever offset in joints and roots Severe Sags |
| 705 SCOTT ST | 0521-0523 | 600 | | | | | | | Roots |
| 2109 S 4TH ST | 0657.2-0657.1 | 20 | | | | | | | Grease buildup |
| 503 SPENCER PL | 2437-2417-2416 | 475 | | | | | | | Debris buildup in MH 2415 |
| 3917 LAKEVIEW DR | 1981.2-1981 | 414.7 | | | | | | | Light to medium grease |
| CODY PARK | 1443-1404 | 114 | | | | | | | Creek crossing roots |
| 1215 Olive st | 0385.1-0393 | 145' | | | | | | | Line broke at 140' at 90 don't go pas |
| 2019 s 3rd animal control | 1895 - clean out | 170' | | | | | | | Line flat collects debris. |



PARTNER REPORTS

Partner Reports

PARTNER REPORT TRAINING

[Web Training Videos](#)
Coming soon!

[Partner Reporting Manual](#)

CREATE NEW USER ID

Please select which report you would like to view by clicking the drop down arrow below.

WELCOME KIT MATERIALS

Partner Summary

MATERIALS APPROVAL

Begin Date (mm-dd-yyyy) 7/1/2017 12:00:00 AM

End Date (mm-dd-yyyy) 12/31/2017 12:00:00 AM

[View Report](#)

CUSTOMER SURVEYS

Select a format

CONTRACTOR NETWORK

LOGOUT

PARTNER SUMMARY

| PARTNER NAME | PRODUCT DESCRIPTION | BEGIN DATE | END DATE | ENROLLMENTS | CLAIMS FILED |
|---|------------------------------|--------------|--------------|-------------|--------------|
| Leavenworth, KS | External Sewer Line Warranty | Jul 01, 2017 | Dec 31, 2017 | 154 | 4 |
| | External Water Line Warranty | Jul 01, 2017 | Dec 31, 2017 | 15 | 2 |
| | In-Home Plumbing Warranty | Jul 01, 2017 | Dec 31, 2017 | 4 | 3 |
| Total For 7/1/2017 To 12/31/2017 | | | | 173 | 9 |
| TOTAL (To Current Day) | | | | 560 | 15 |

During the reporting cycle the City of Leavenworth experienced five contractor-caused sanitary sewer overflows. Each of these has been discussed with City staff and contractors involved in the incident.

| City of Leavenworth Contractor-Related SSO Events | | |
|--|----------------------|--|
| July 1 – December 31, 2017 | | |
| KDHE SSO Report No. | Date of Event | Nature of Problem |
| 3 | August 21 | Contractor working in the new industrial park left newly-installed manholes uncovered during a 5-inch rain. |
| 7 | October 13 | Water used for pressure test of existing 10-inch force main was discharged on the ground. |
| 10 | October 28 | Federal Prison had SSO while new pumps were being installed. |
| 12 | December 6 | Westar Energy broke a private lateral. |
| 15 | December 27 | Leavenworth Water Department (not a City utility) experienced an 8-inch water main break that filled a sanitary sewer line and caused a manhole to overflow. |