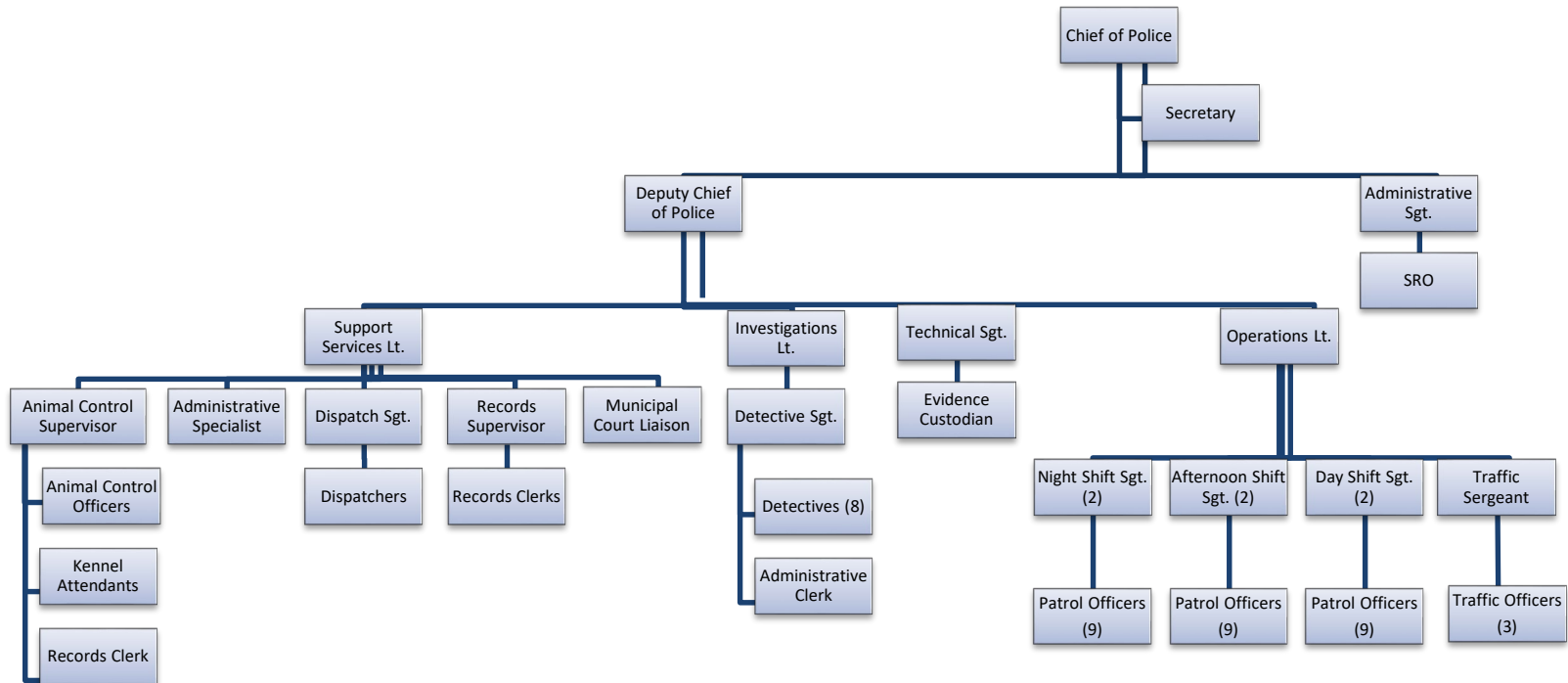




Leavenworth Police Department 2023 Annual Report



Leavenworth Police Department Organizational Chart



The Organizational Chart for the Leavenworth Police Department is established to ensure continued operations in the event of catastrophe. The Deputy Chief of Police is fully trained and experienced in all matters should it become necessary to fulfill the role of Chief of Police. Throughout the year the agency spends considerable time and effort training and preparing Officers for promotion and the transition to leadership roles. Several times each year, employees are appointed and serve in an acting role such as Acting Lieutenant or Acting Chief of Police. This helps people transition to positions of greater responsibility!



Message from Chief Kitchens

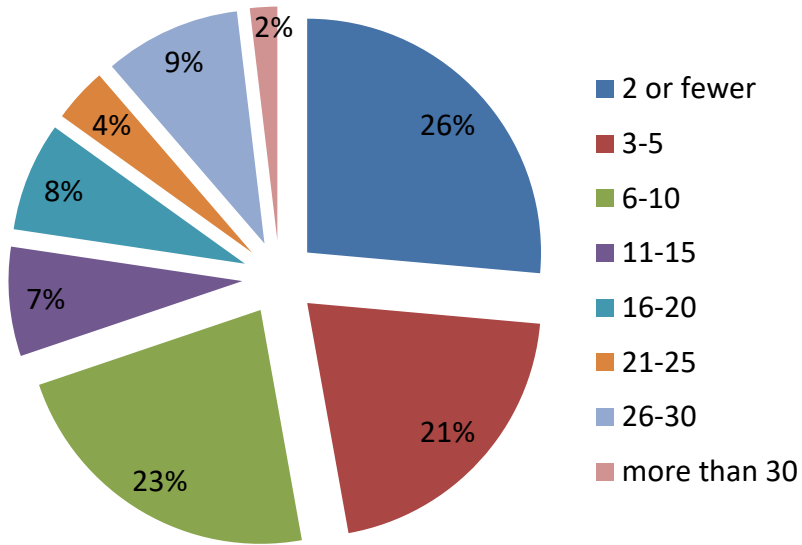
The men and women of the Leavenworth Police Department are proud to present the 2023 Annual Report. Officers and employees continued to meet the challenges of providing for the public safety of our community with great spirit.

The overall crime rate in the City of Leavenworth went up 3%. Part 1 crimes were down significantly and Part 2 crimes went up. We continue to deal with the tragedy of Domestic Violence as our primary source of all calls for service but they were just about the same.

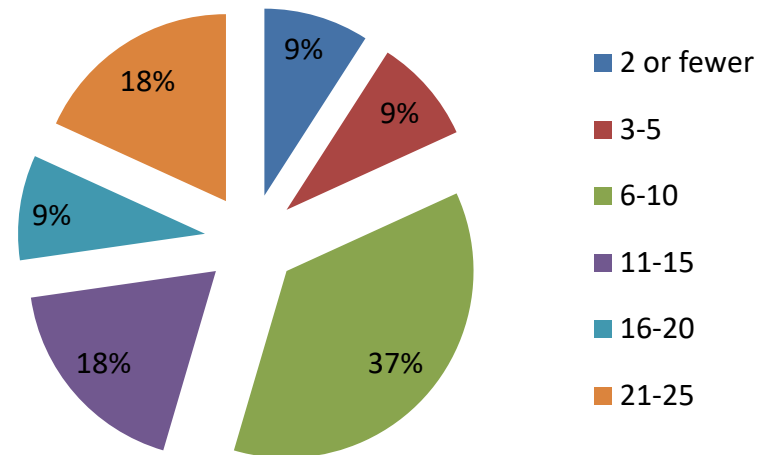
The law enforcement profession continues to focus our efforts on hiring and retention. We have been presented with serious staffing challenges, as Police Officers continue to take advantage of a highly competitive marketplace.

Police Department Employee Longevity (in years)

Officer Longevity

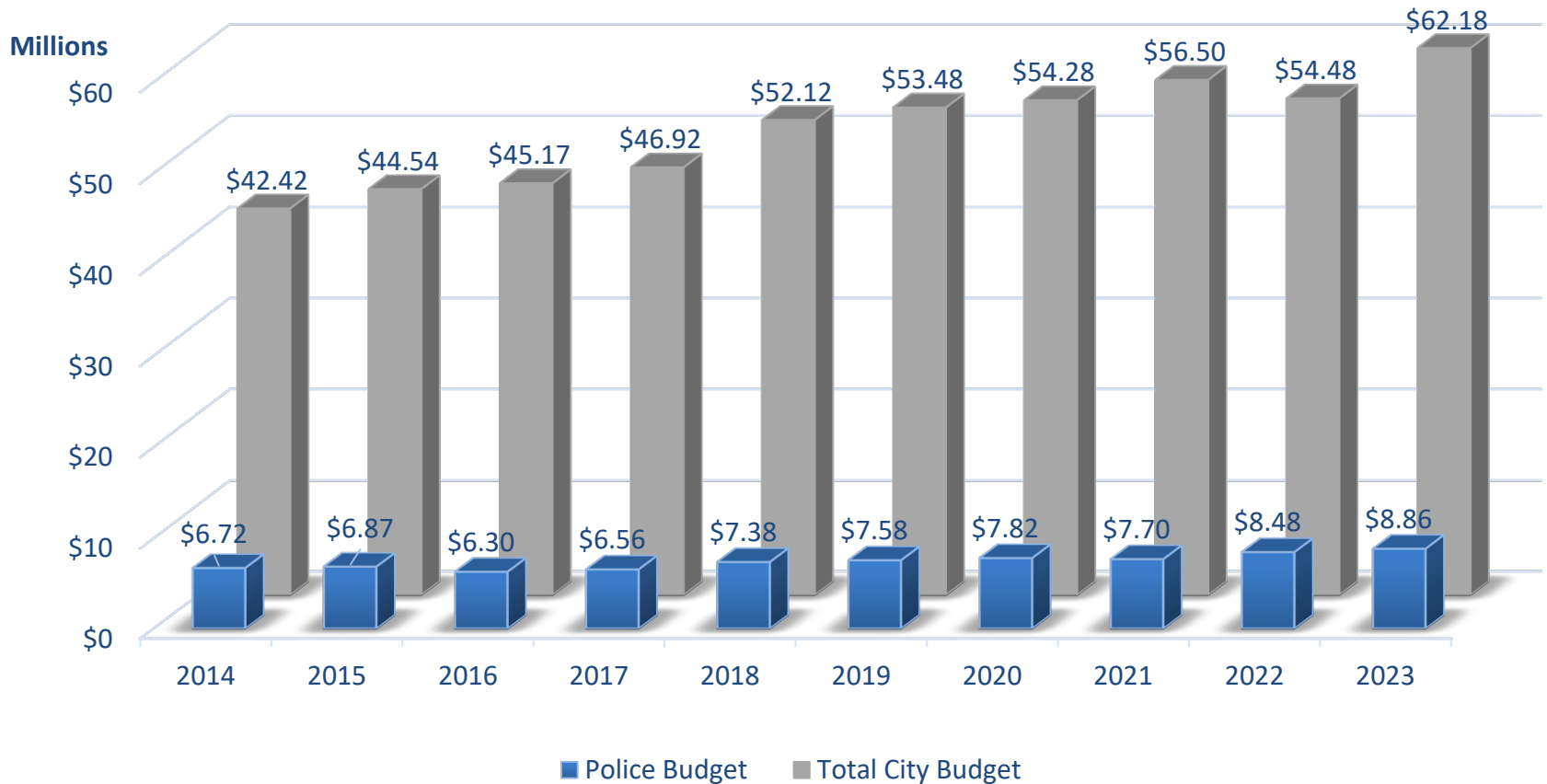


Communications Longevity



Annual City Budget

Dollar Comparison



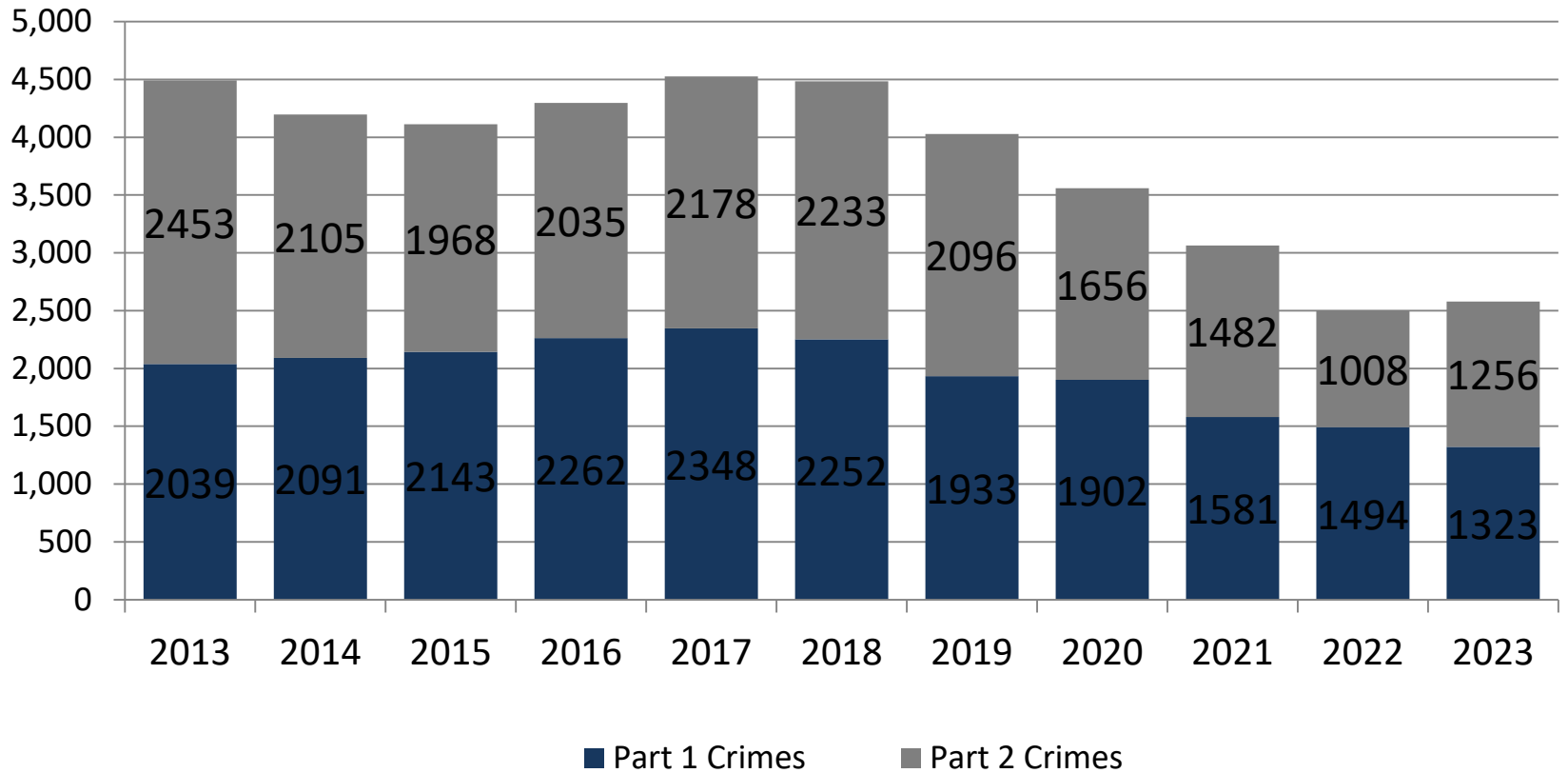
Community Engagement



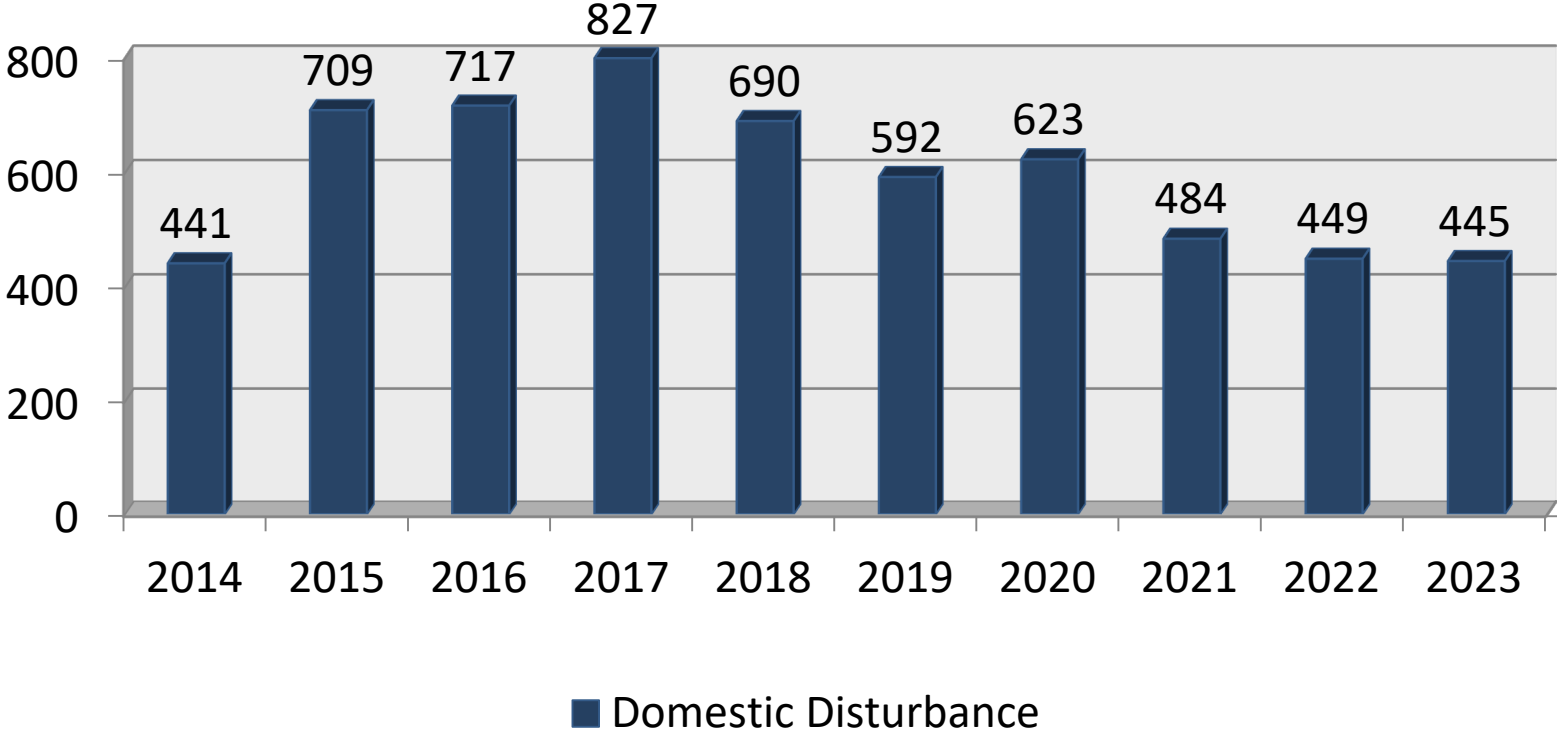
Calls For Service



Part 1 & Part 2 Crimes



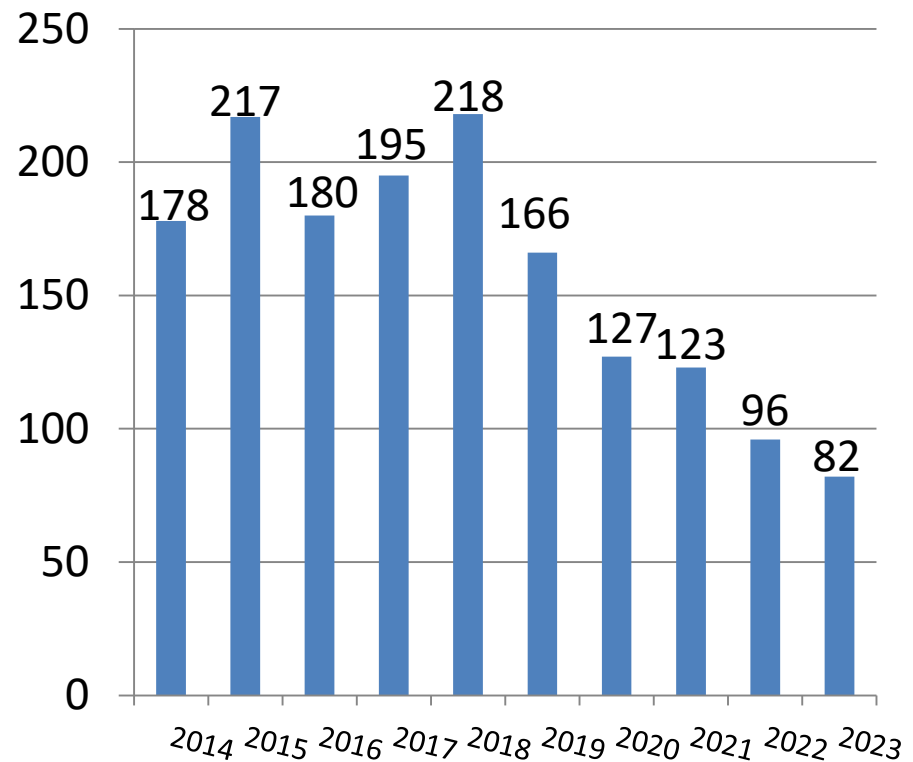
Domestic Cases



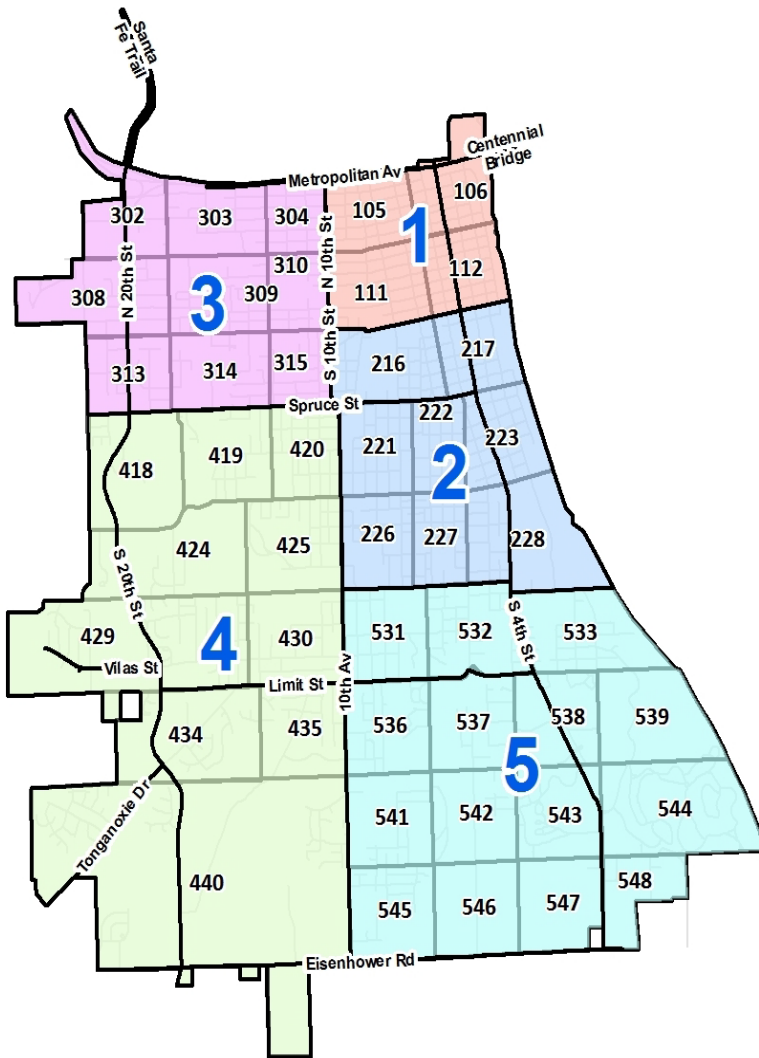
Mental Health

In the last several years the issue of mental health has risen to one of the more difficult and dangerous calls that police officers deal with.

Suicide Calls

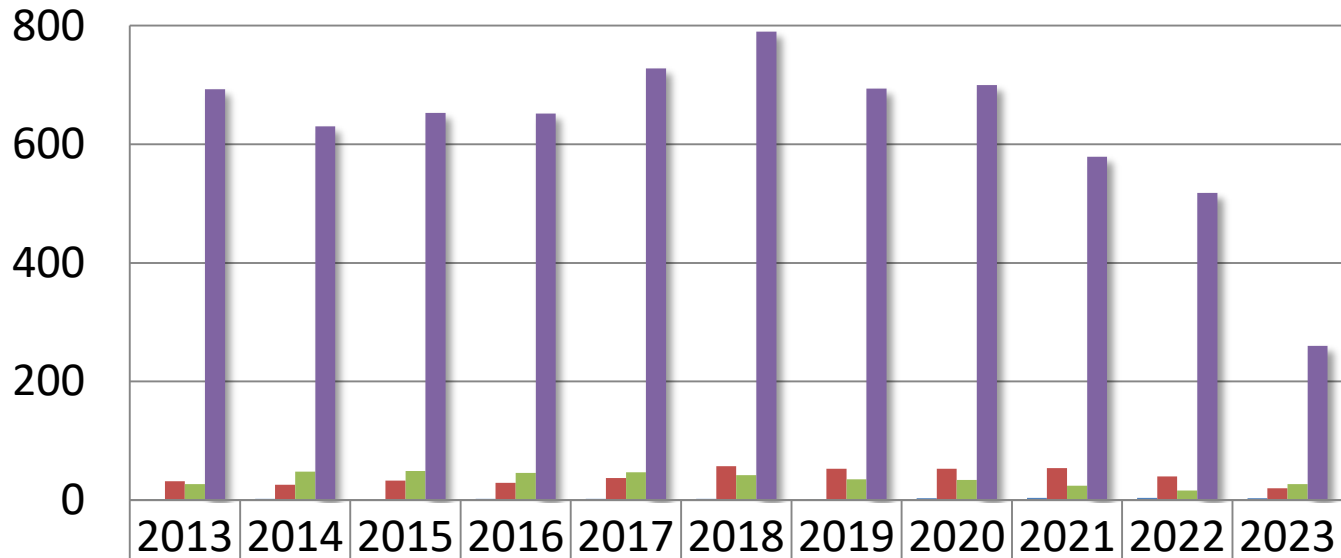


Criminal Activity – Persons 2023



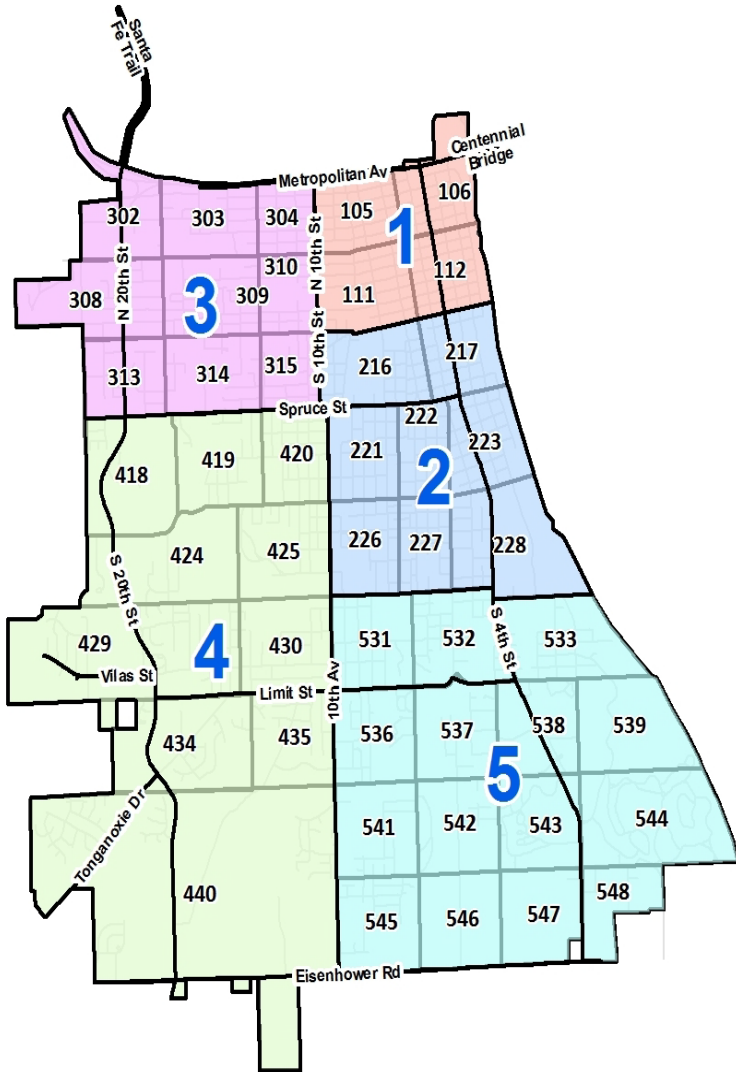
Area	Homicides	Rape	Robberies	Assaults
1	0	3	4	67
2	1	7	9	55
3	1	4	2	32
4	0	2	2	21
5	1	4	10	85

Criminal Activity Persons – 10 Year Trend



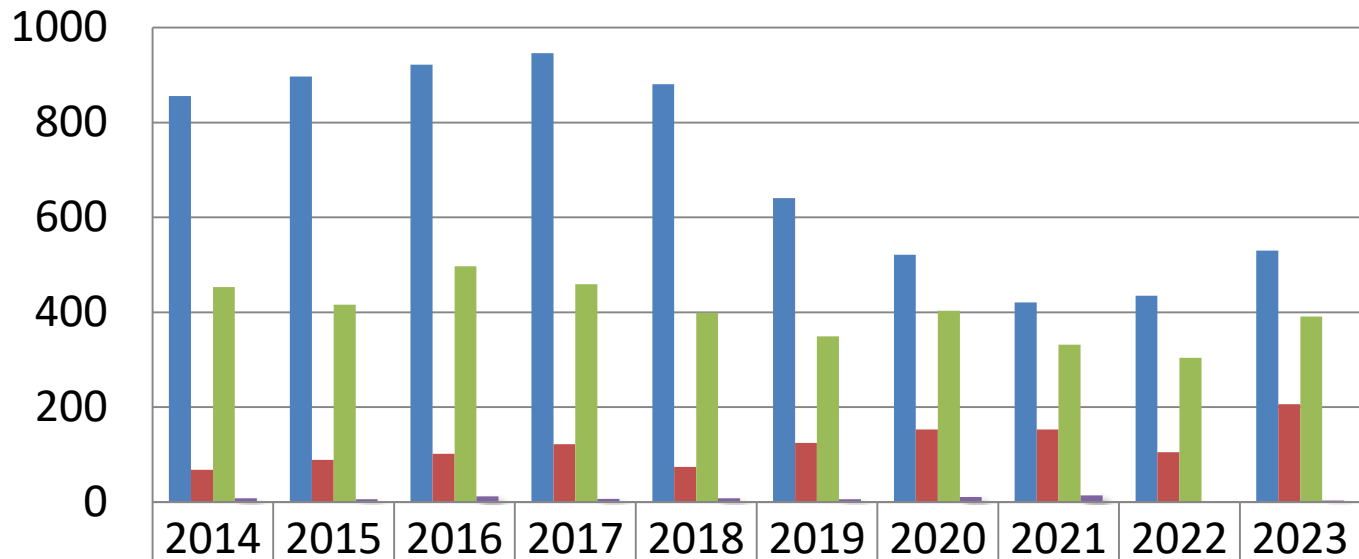
■ Homicides	1	2	0	2	2	2	1	3	4	4	3
■ Rape	32	26	33	29	37	57	53	53	54	40	20
■ Robberies	27	48	49	46	47	42	35	34	24	16	27
■ Assaults	693	630	653	652	728	790	694	700	579	518	260

Criminal Activity – Property 2023



Area	Theft	Auto Theft	Burglaries	Arson
1	104	53	97	0
2	145	48	110	1
3	67	20	27	0
4	84	18	46	1
5	130	67	111	1

Criminal Activity Property– 10 Year Trend

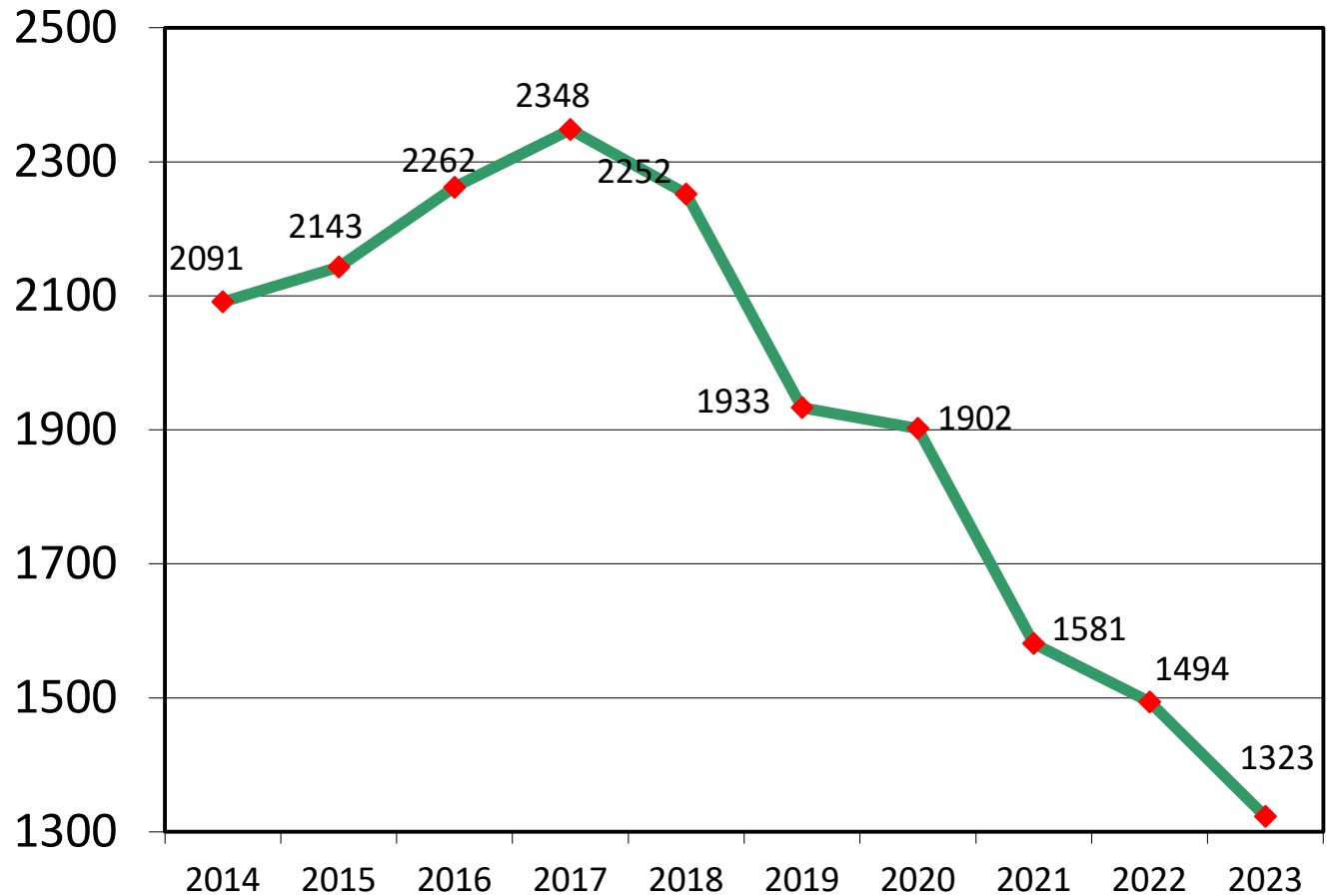


■ Theft	856	897	922	946	881	641	521	421	435	530
■ Auto Theft	68	89	102	122	74	125	153	153	105	206
■ Burglaries	453	416	497	459	399	349	403	332	304	391
■ Arson	8	6	12	7	8	6	11	14	0	3

Part 1 Crimes Reported

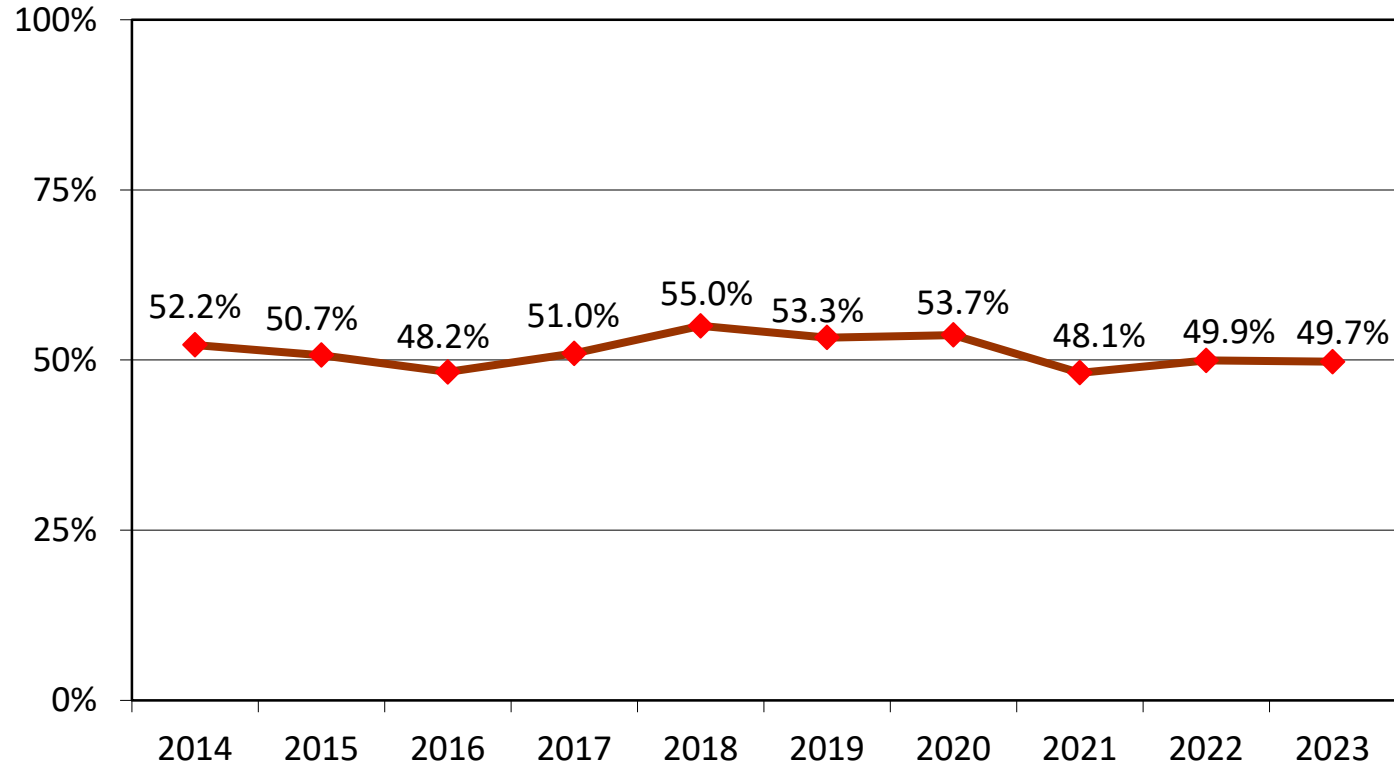
Part 1 crimes include:

- ⇒ Murder
- ⇒ Rape
- ⇒ Robbery
- ⇒ Assault
- ⇒ Burglary
- ⇒ Theft
- ⇒ Auto Theft



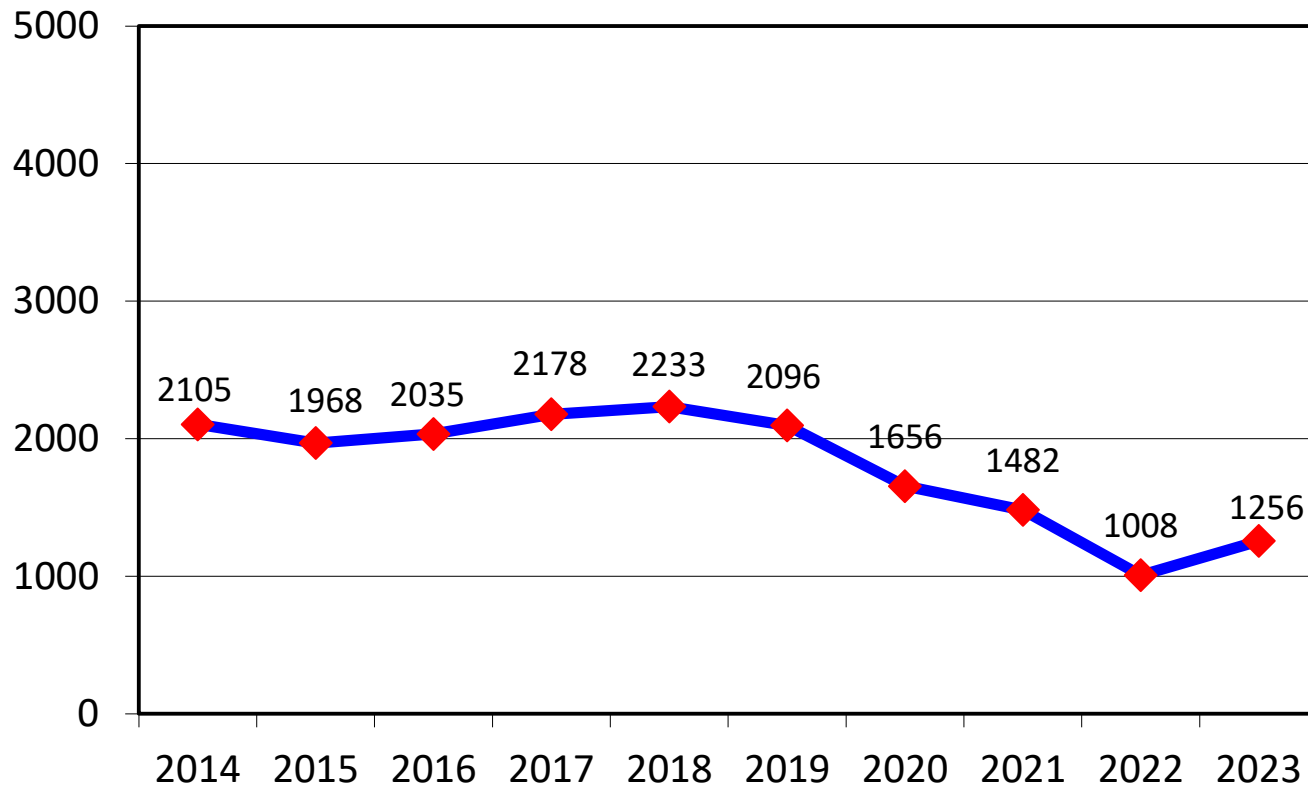
Clearances

Percent of Part 1 Crimes Cleared



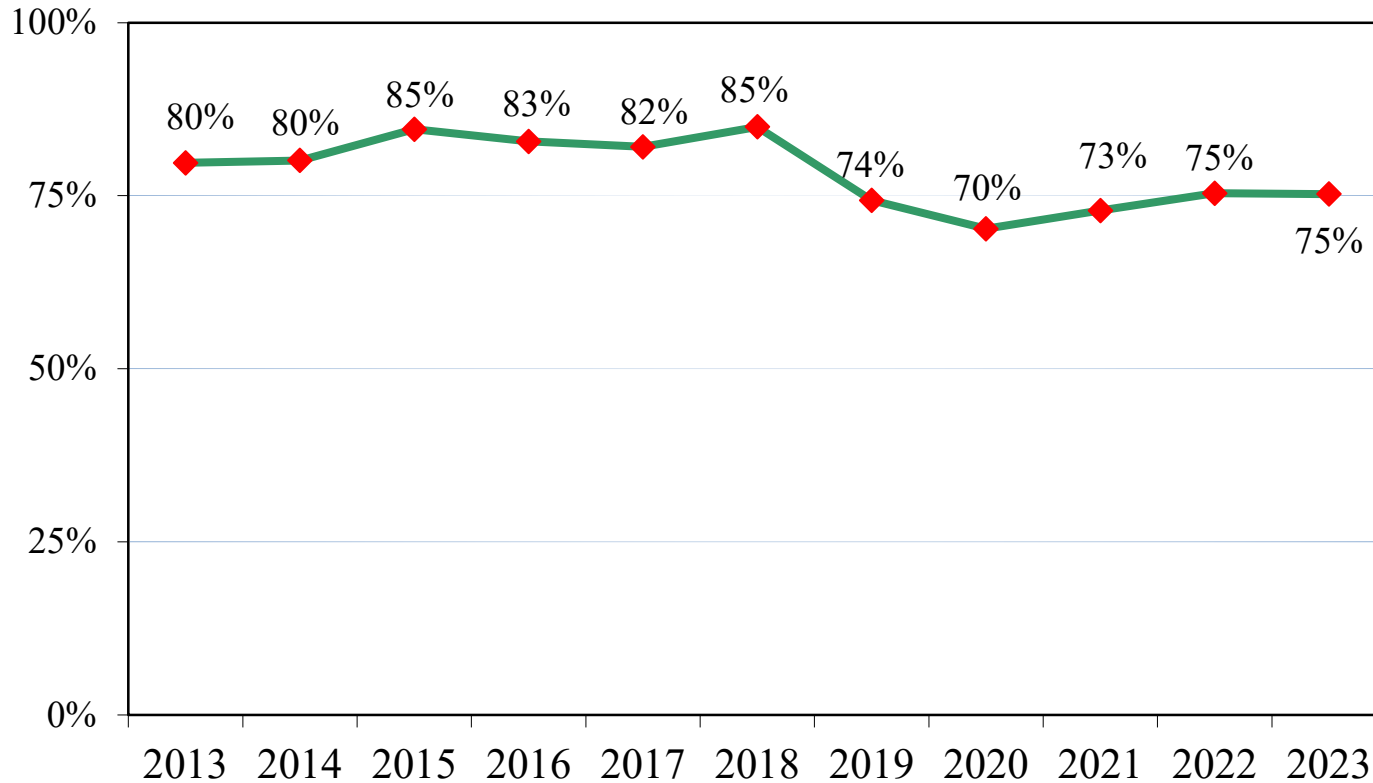
Part 2 Crimes Reported

Part 2 crimes include all criminal events not included in the Part 1 index.



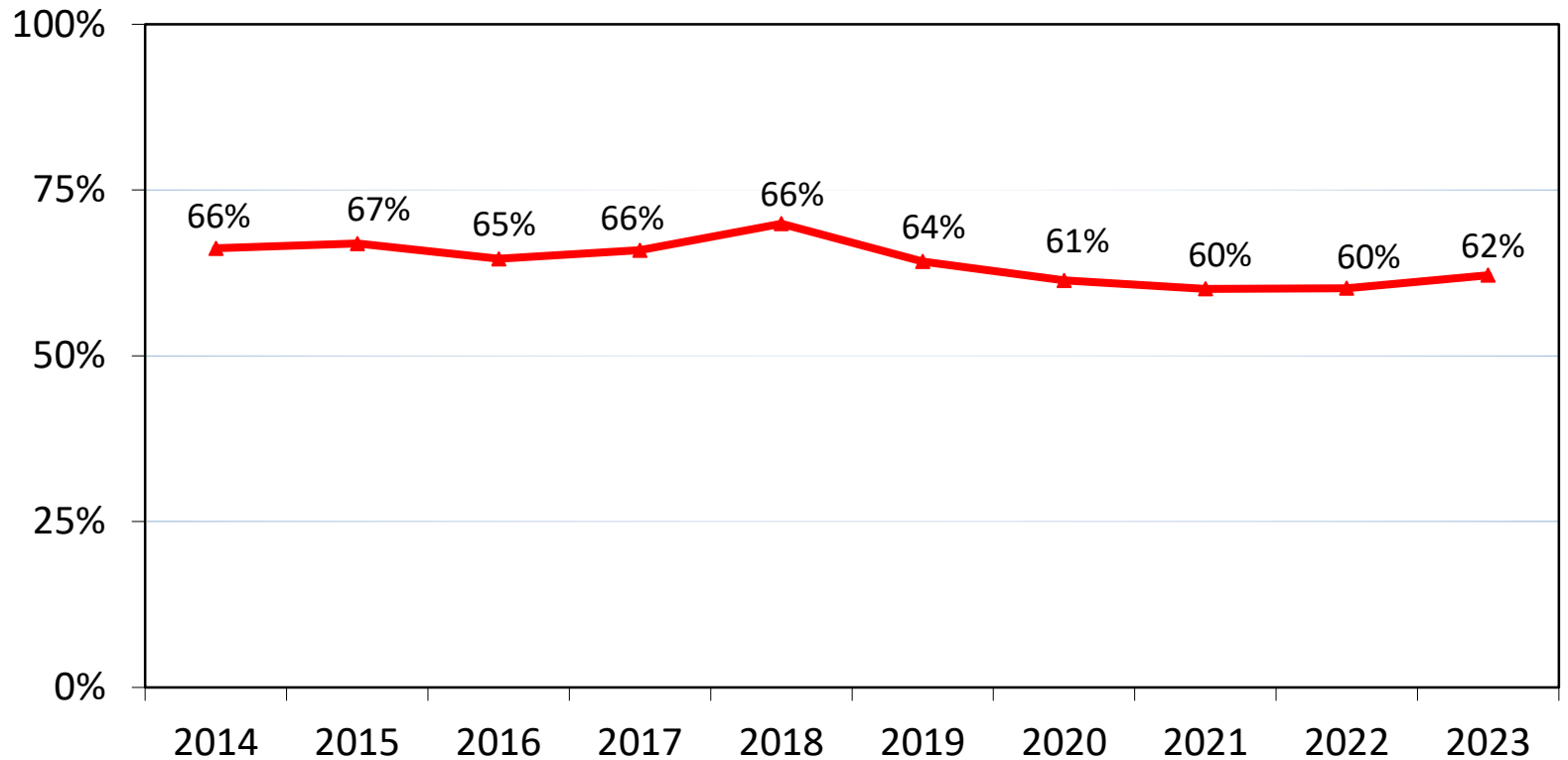
Clearances

Percent of Part 2 Crimes Cleared

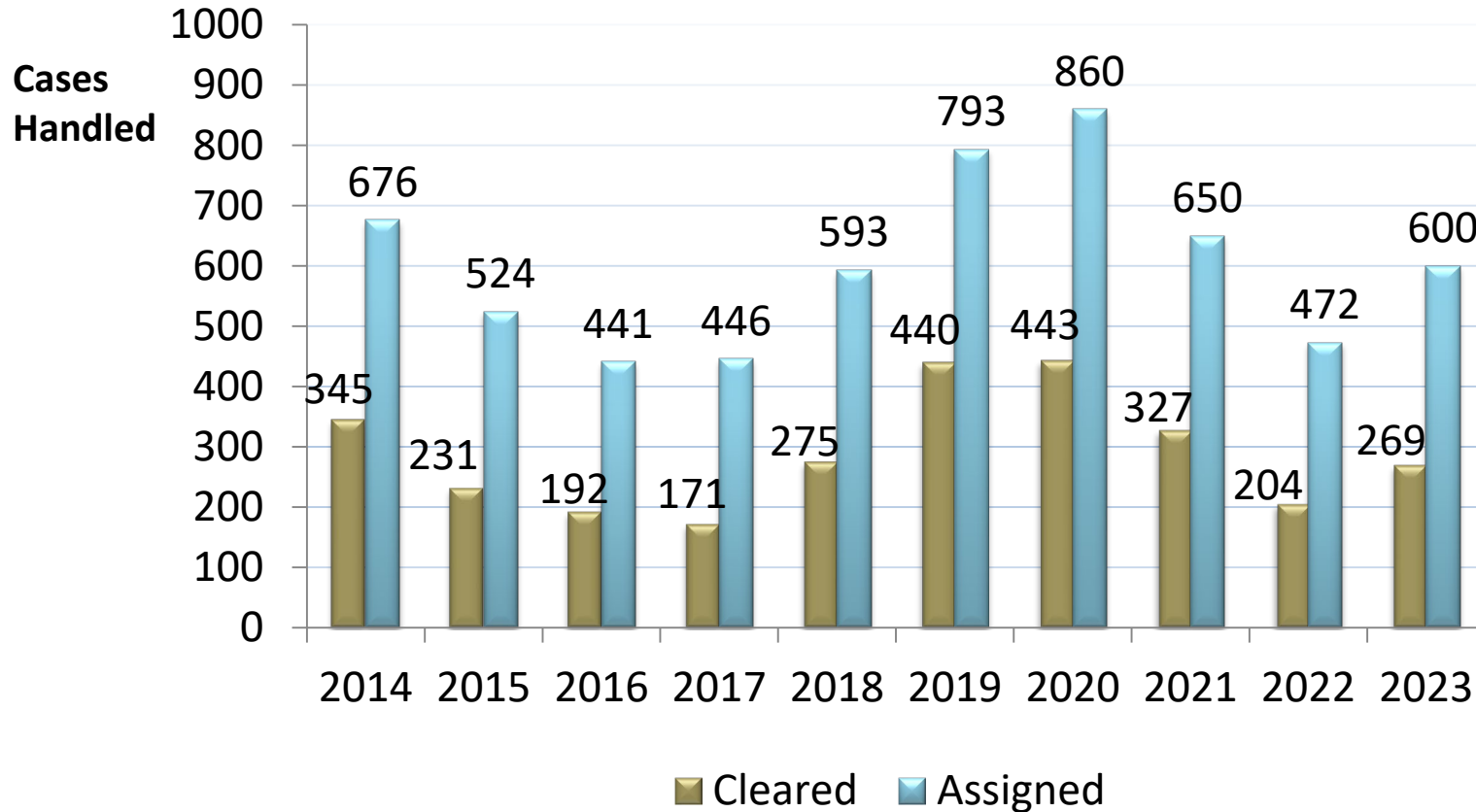


Clearances

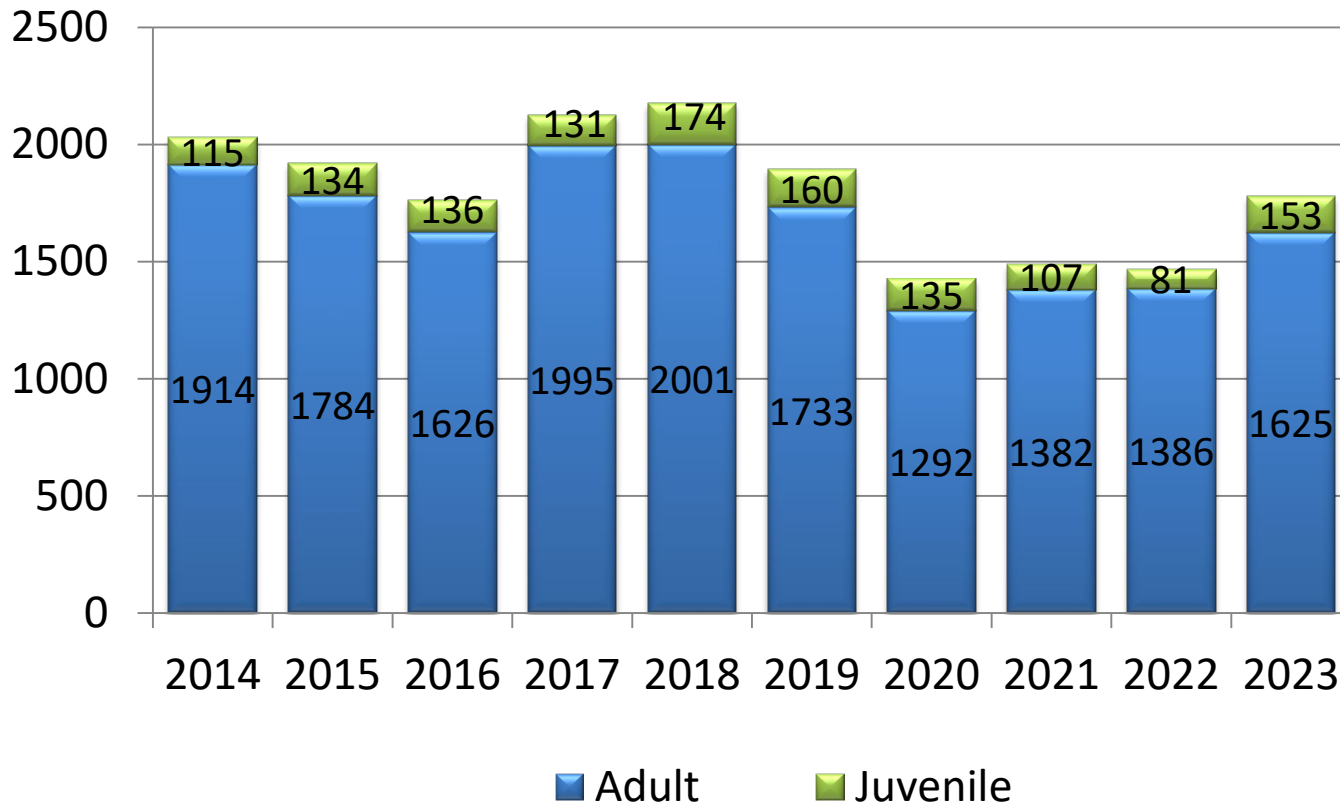
Percent of Part I & II Crimes Cleared



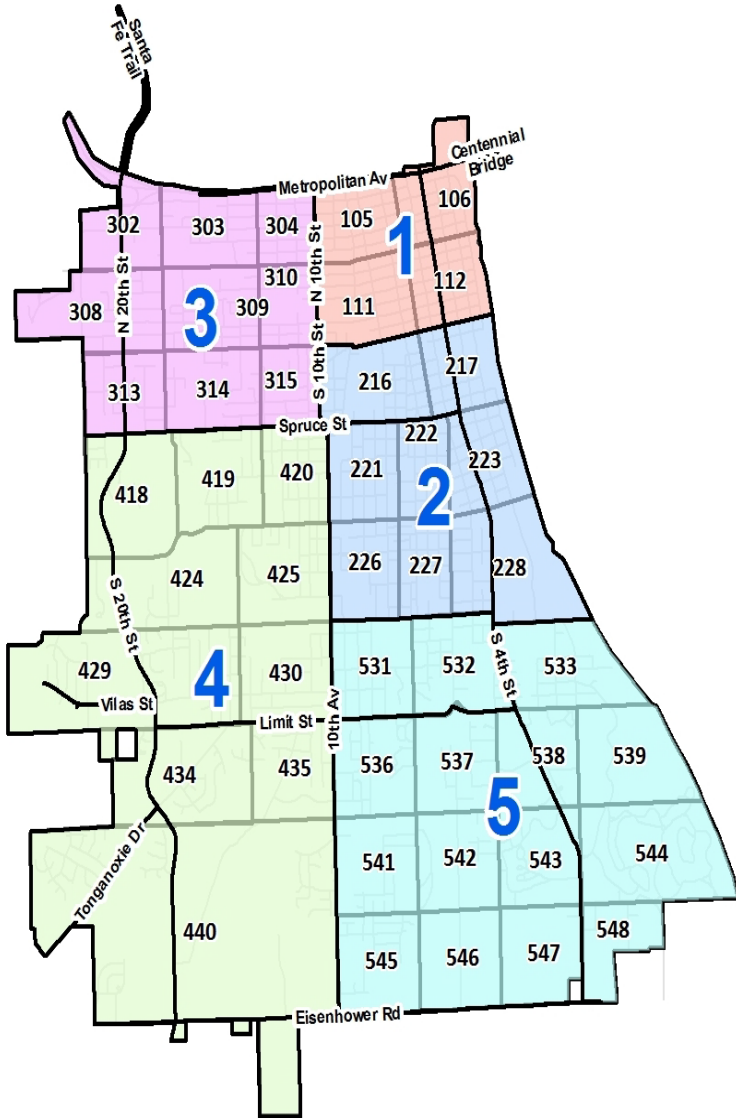
Detective Division



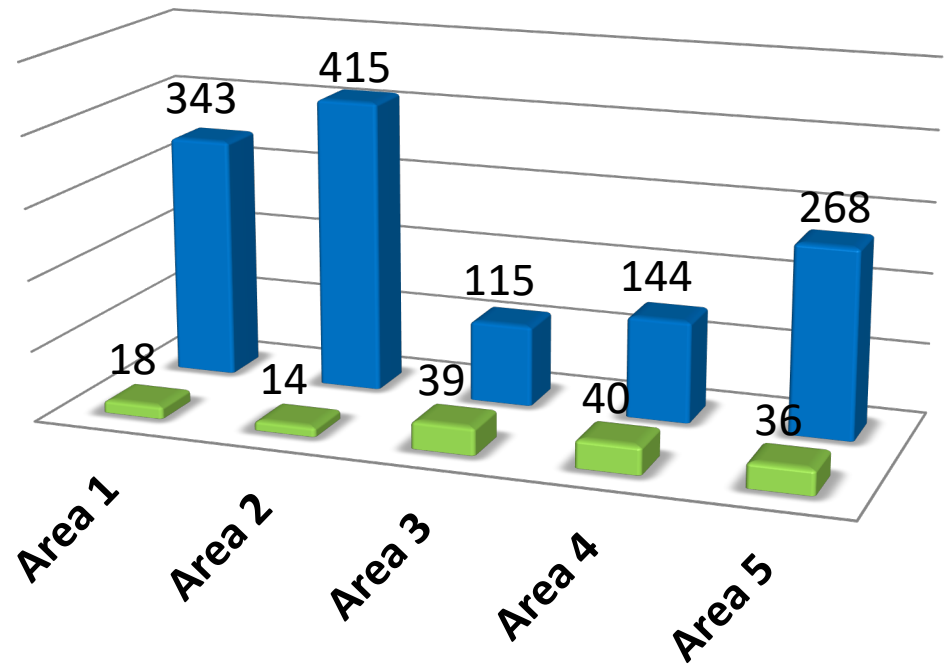
Arrests



Arrests by Area 2023

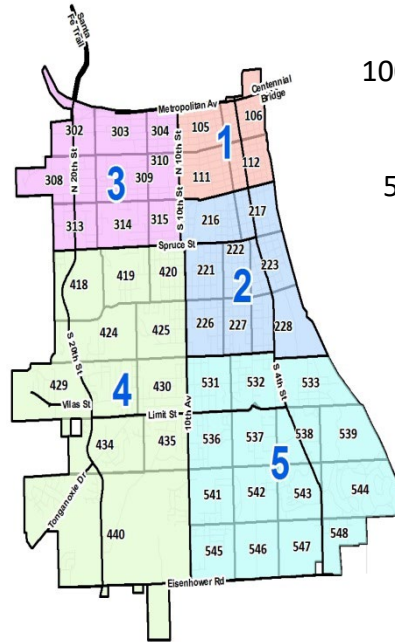
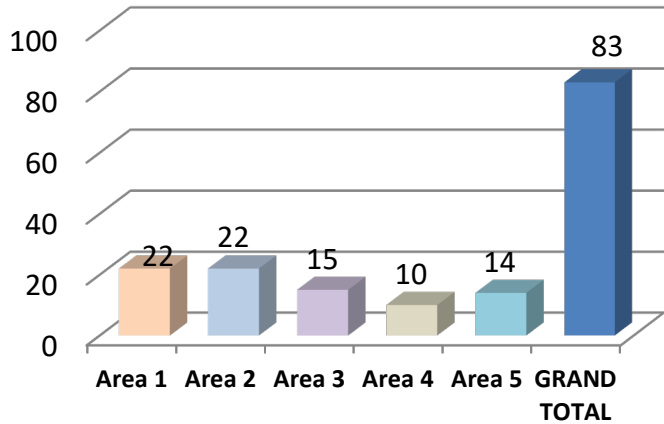


■ Juvenile ■ Adult

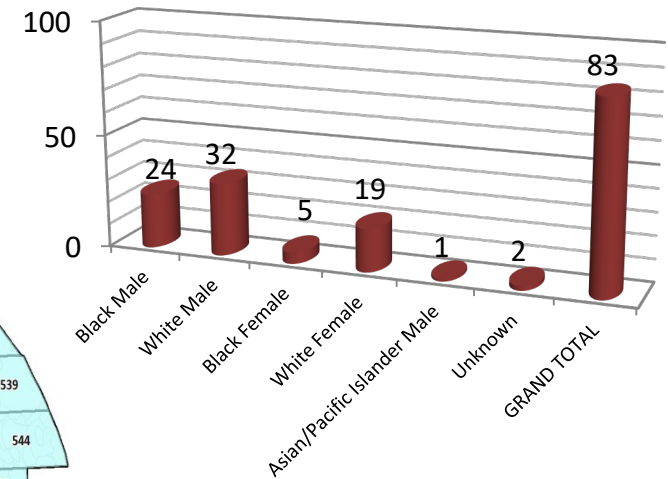


Domestic Arrests 2023

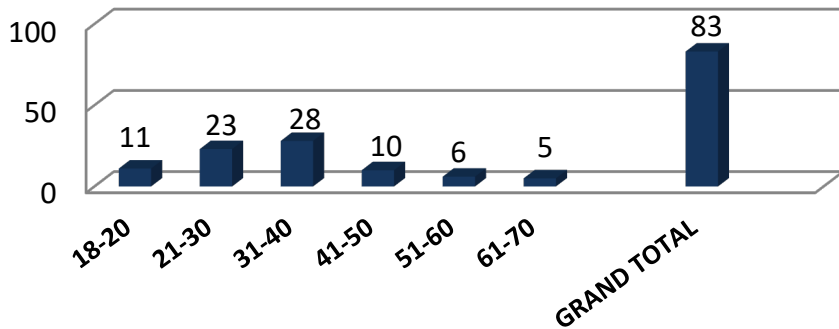
By Area



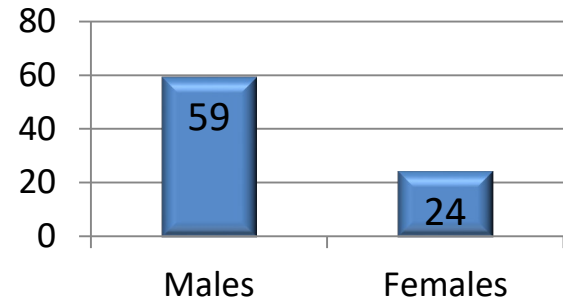
By Race



By Age

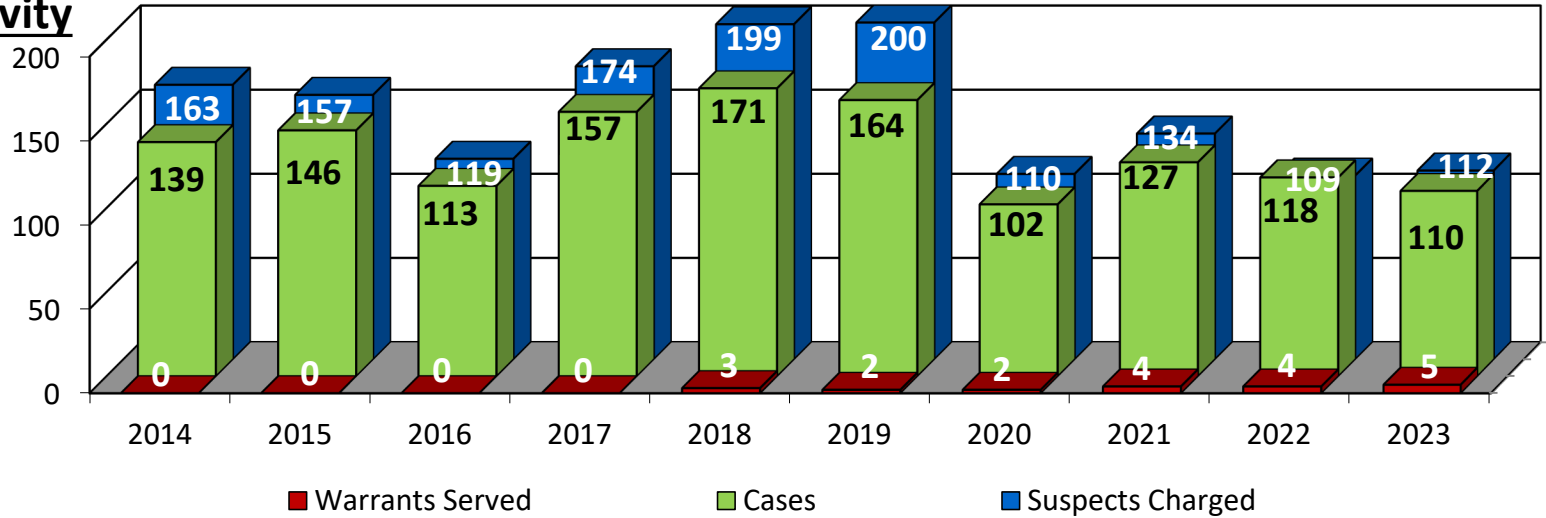


By Gender

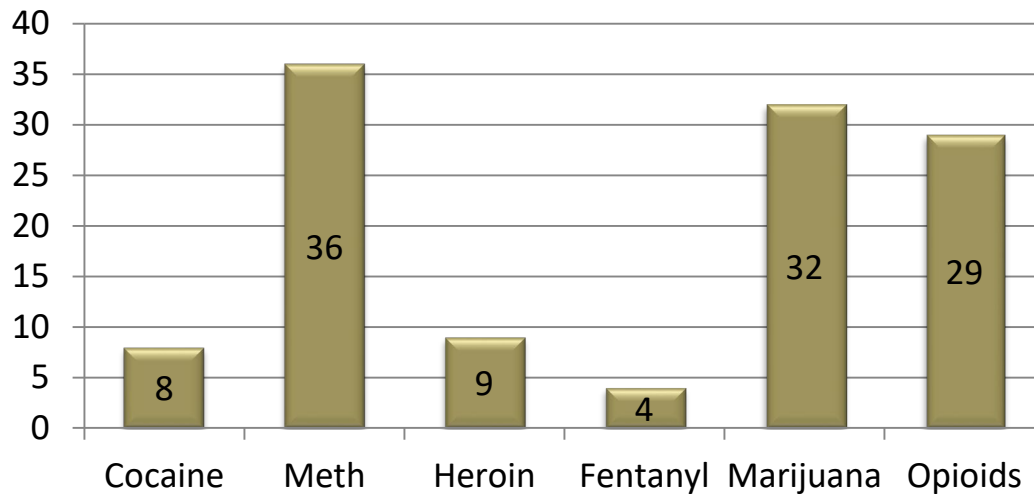


Narcotics Enforcement

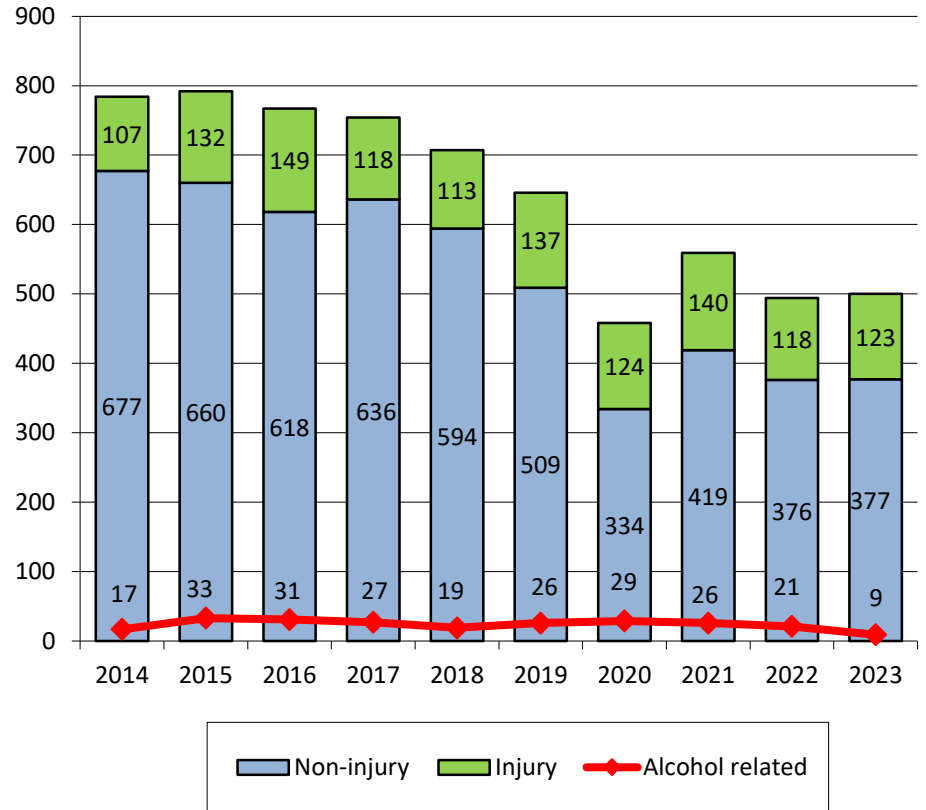
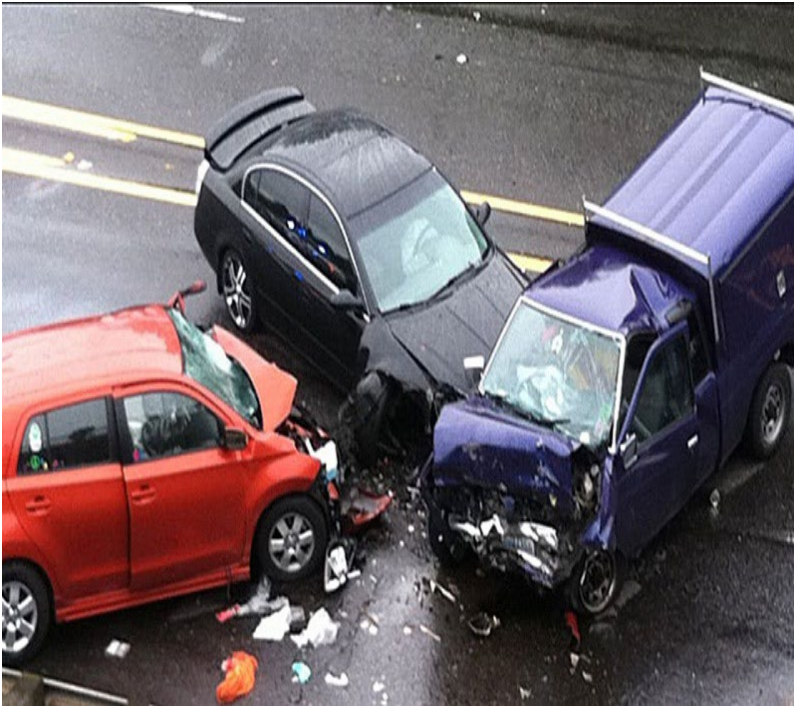
Activity



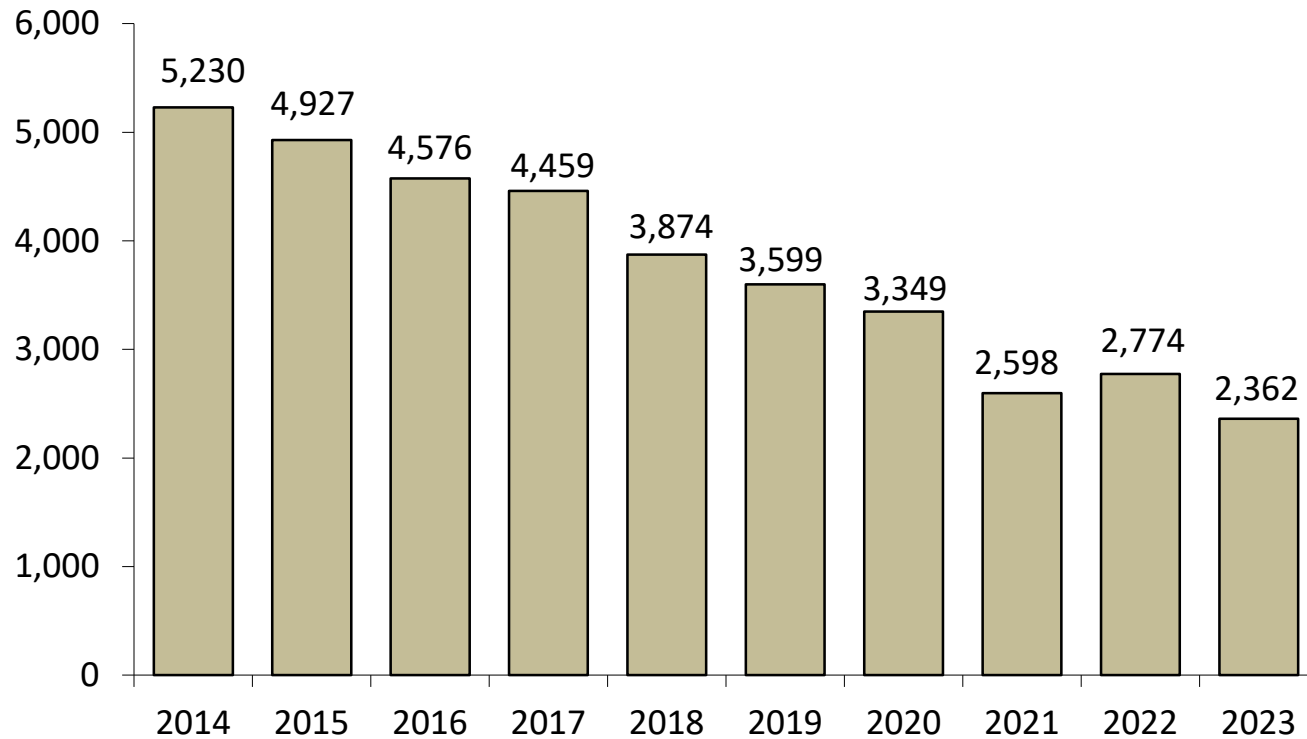
Drug Chart



Traffic Accidents



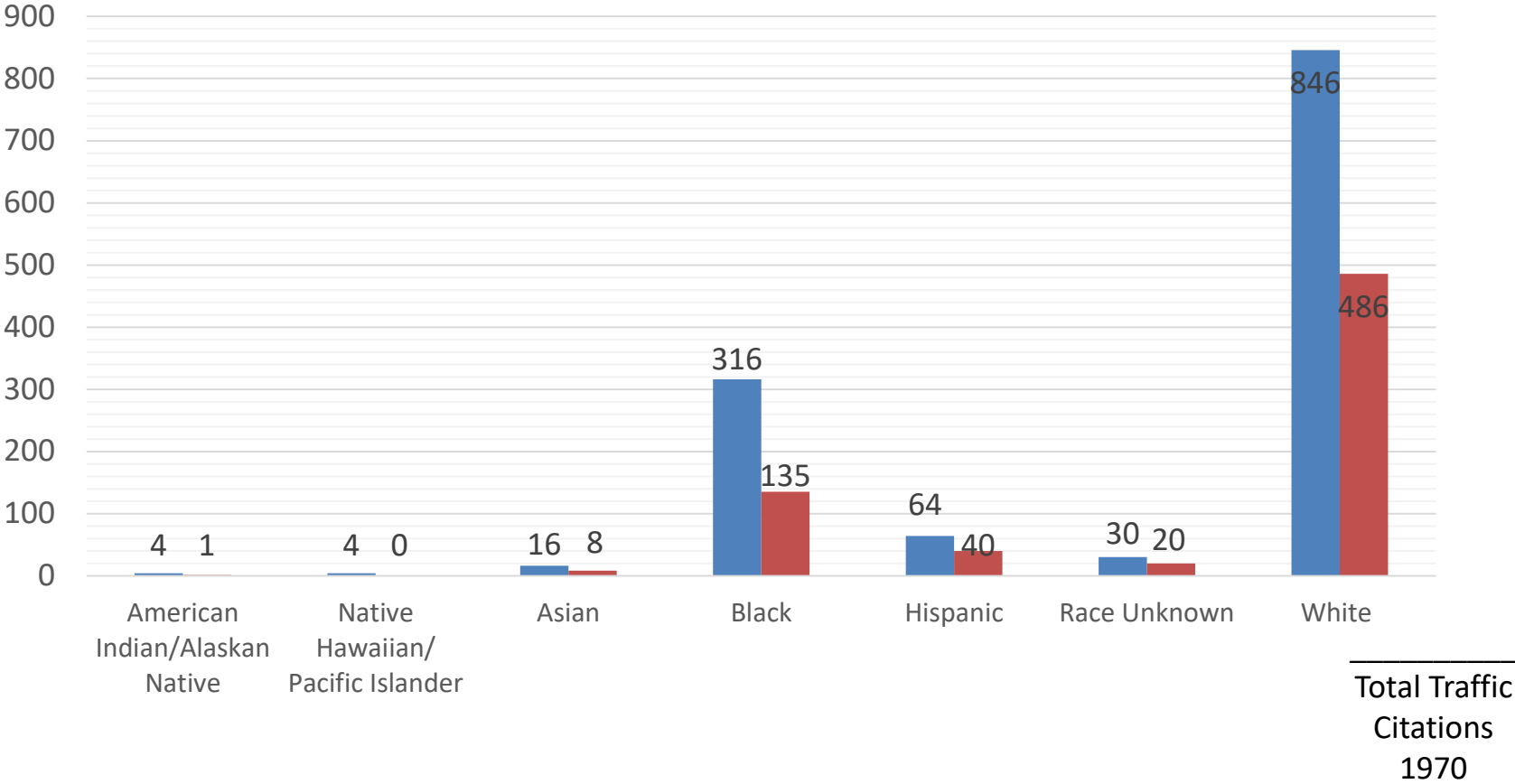
All Citations



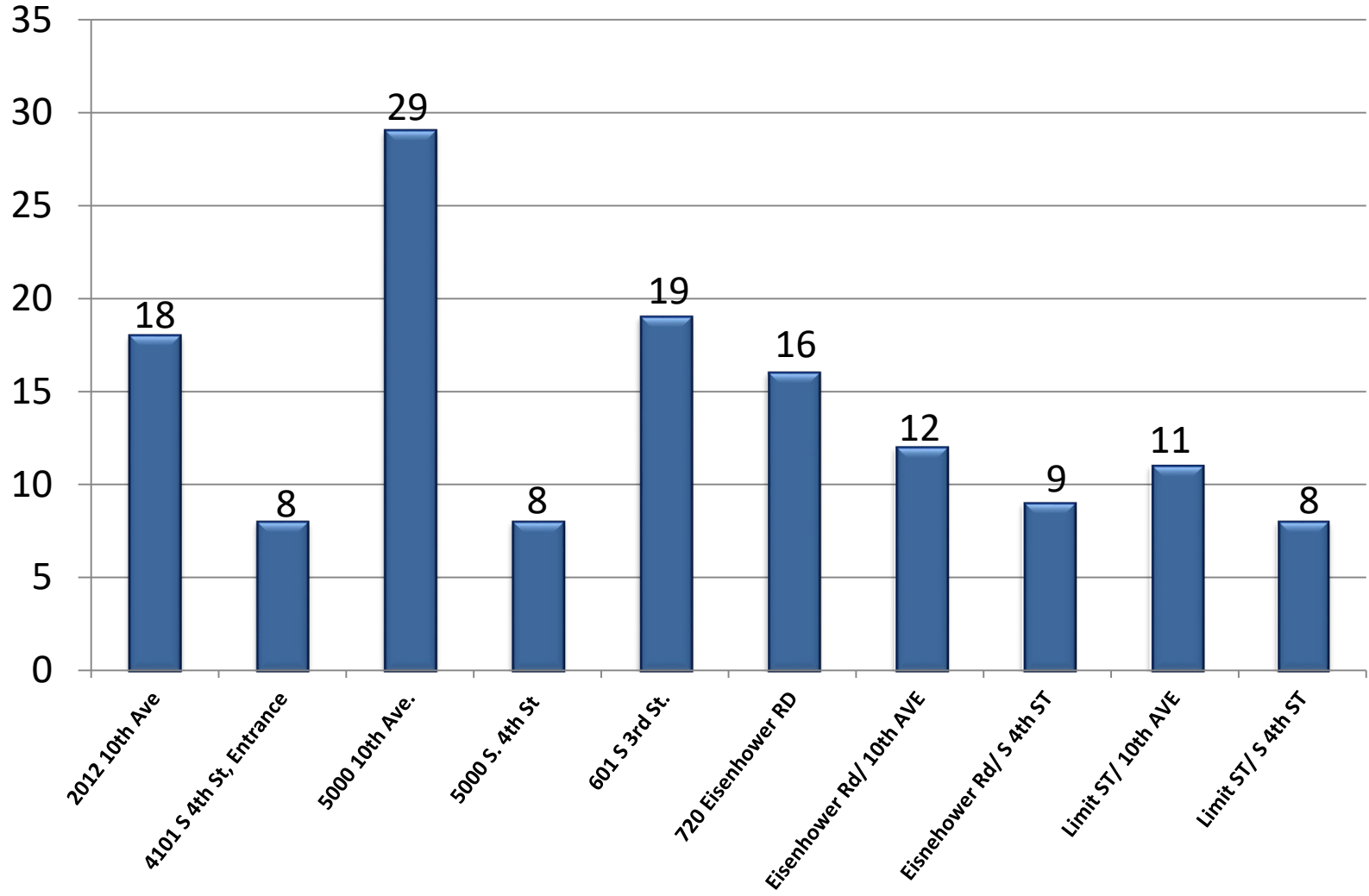
Traffic Citations 2023

By Race and Gender

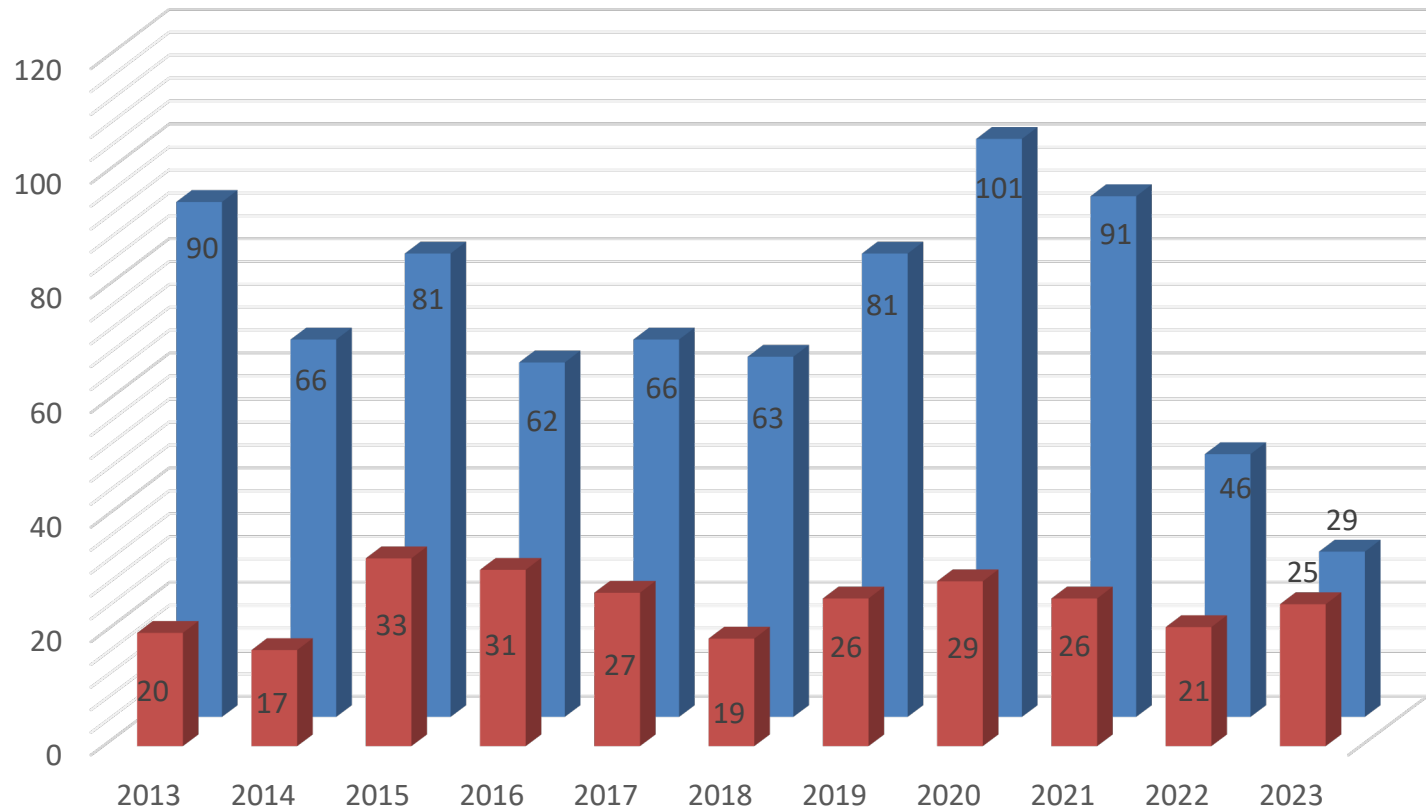
Male Female



Top Traffic Accident Locations 2023



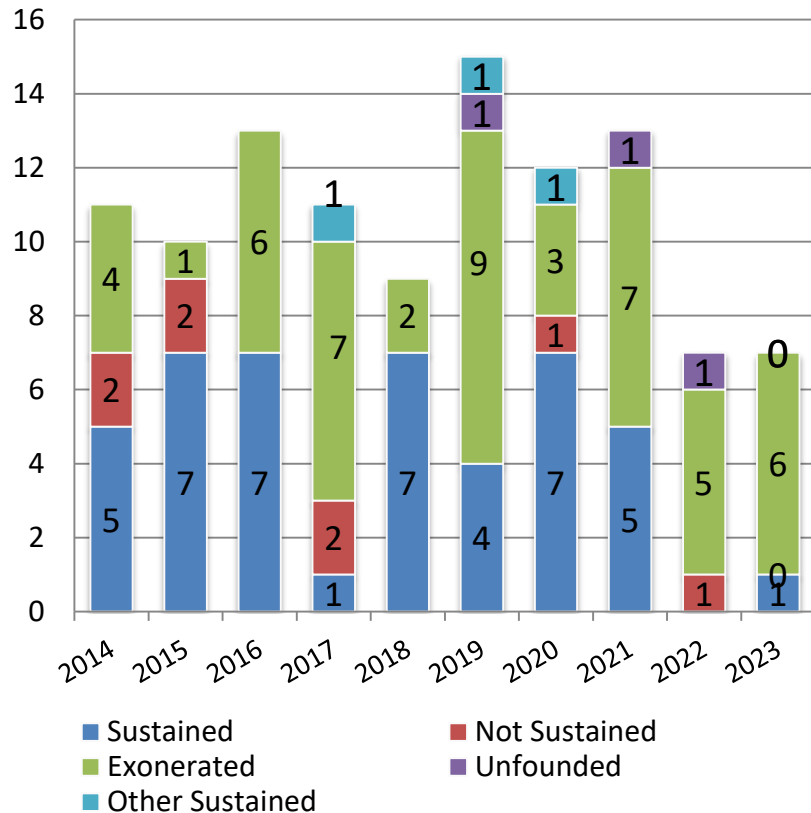
DUI Arrests/Alcohol Related Accidents



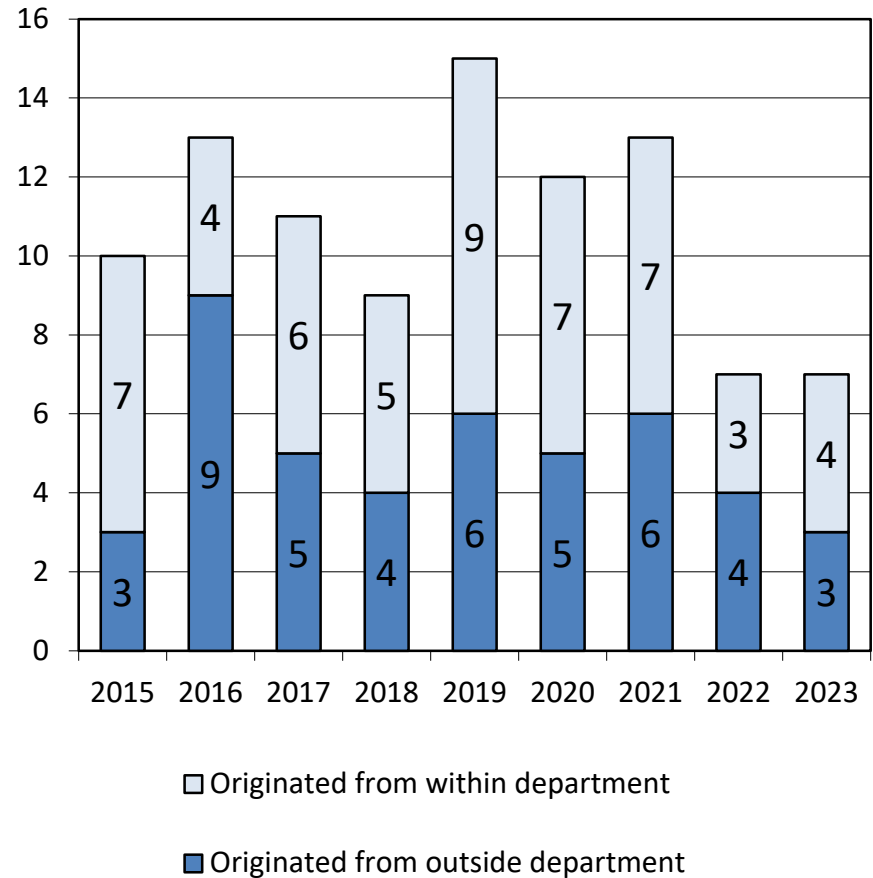
■ Alcohol Related Accidents ■ DUI Arrests

Professional Standards Investigations

A Professional Standards Investigation follows any critical event or complaint about the conduct of an officer. Other officers, supervisors, or citizens may initiate this.

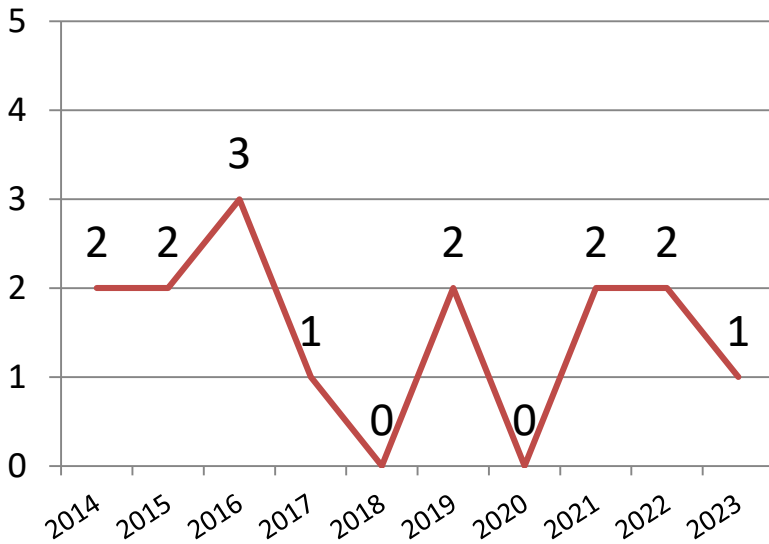


• Totals include all Bias-Based Complaints filed with the department.

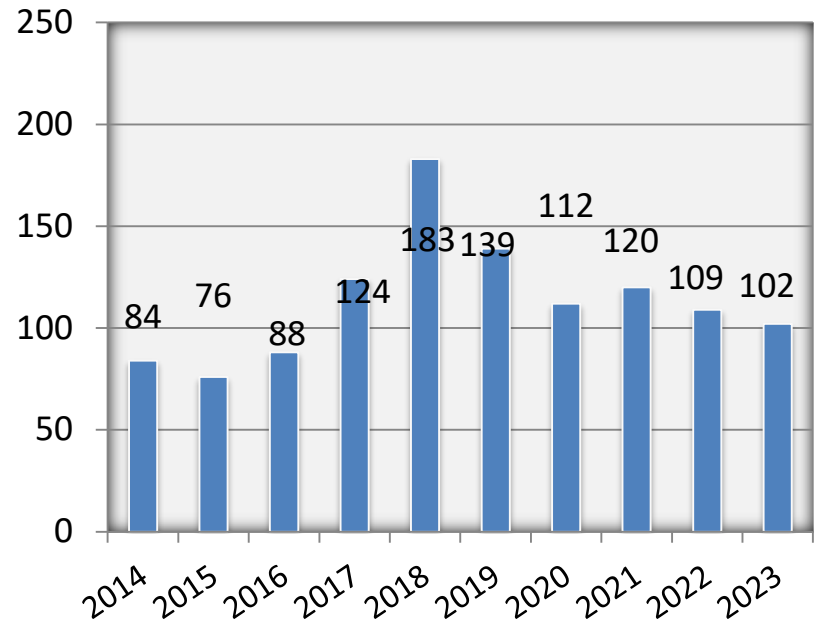


Professional Standards Investigations

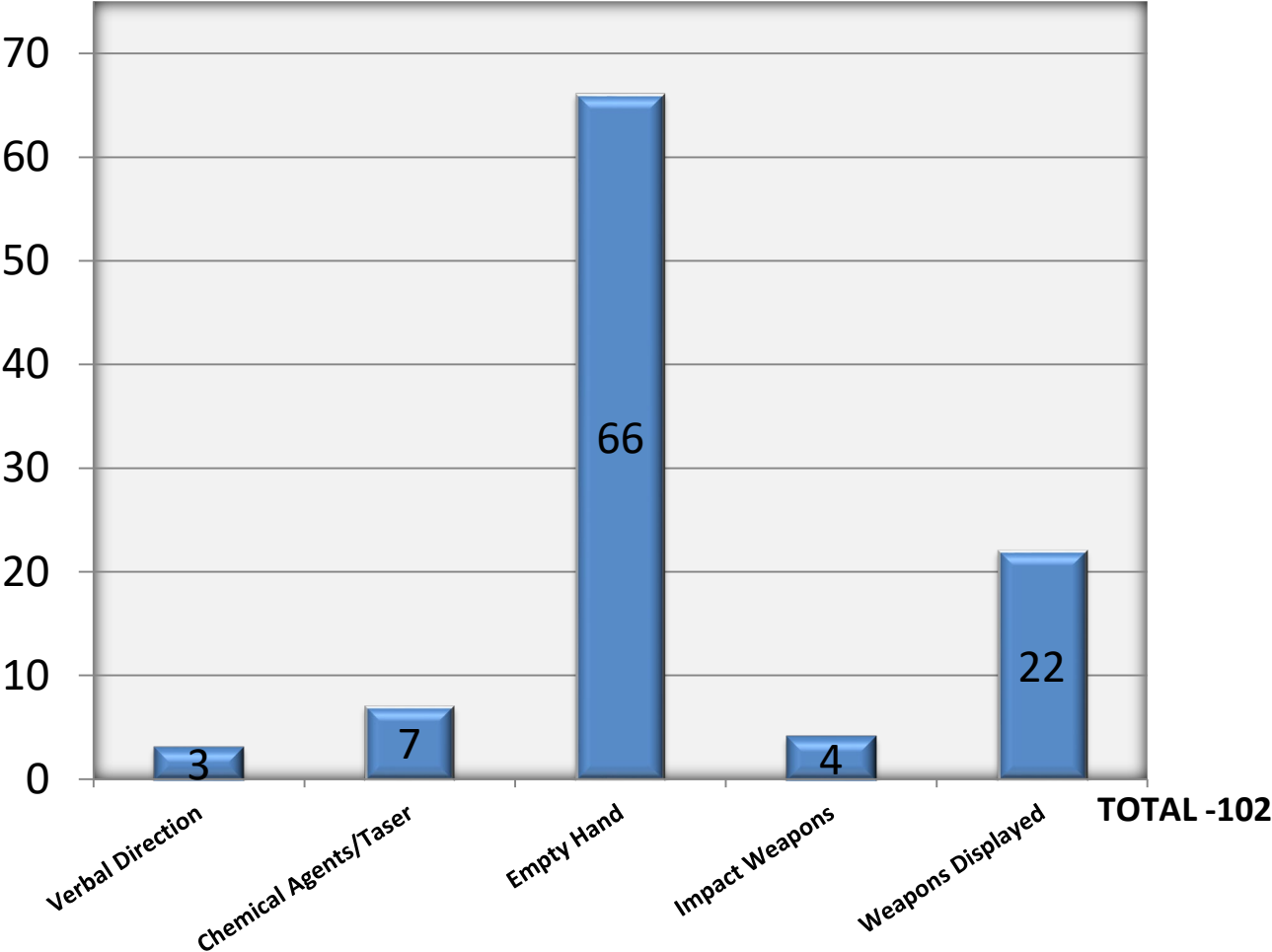
Bias-Based Policing Complaints



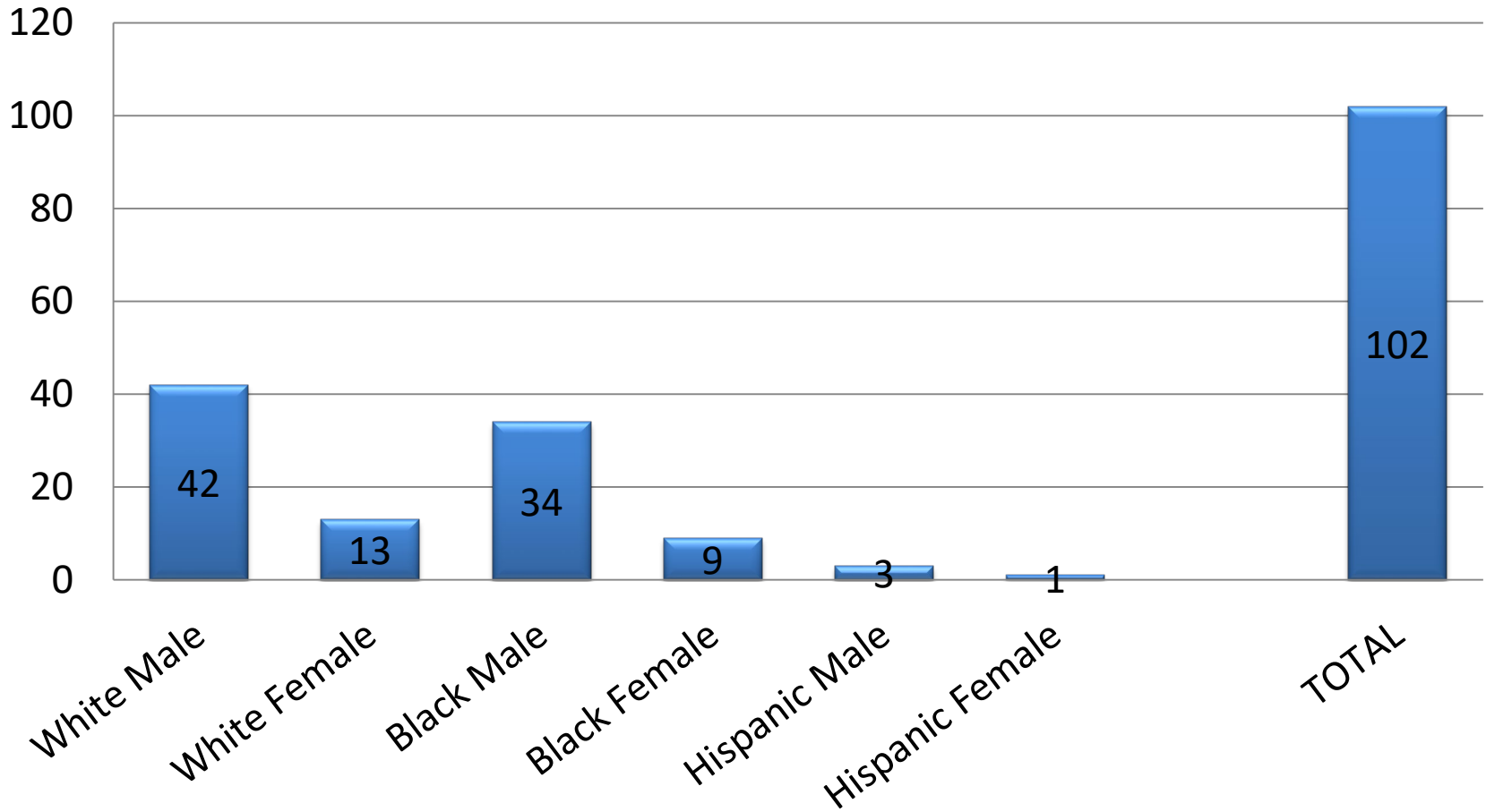
Use of Force Reports Filed by Officers



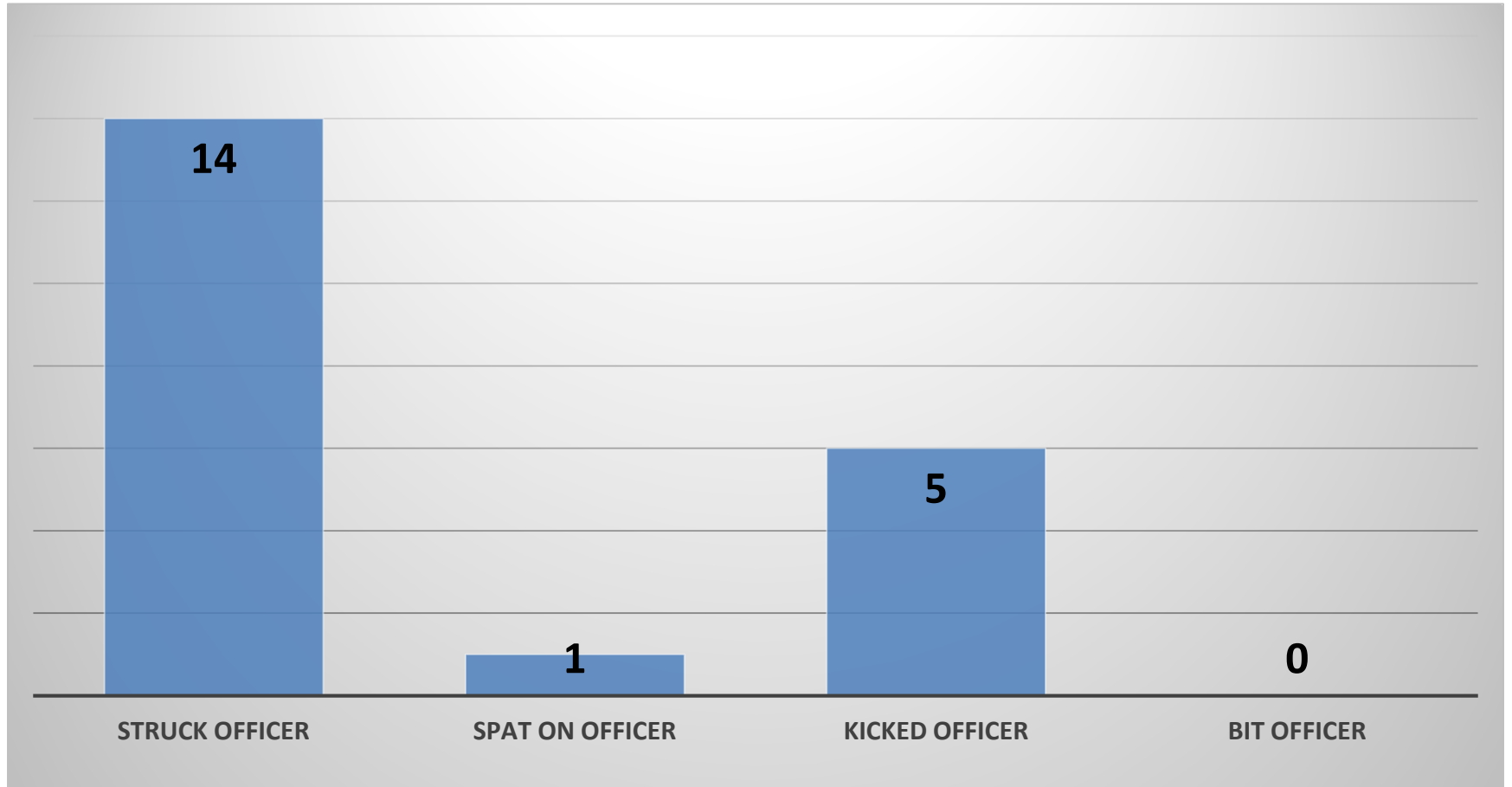
Use of Force 2023



Use of Force by Race & Gender

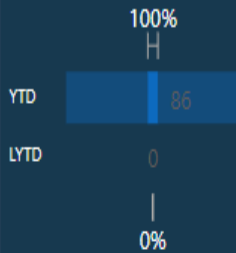


Battery LEO

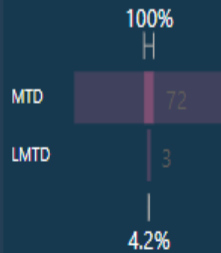


86
Arrest Count

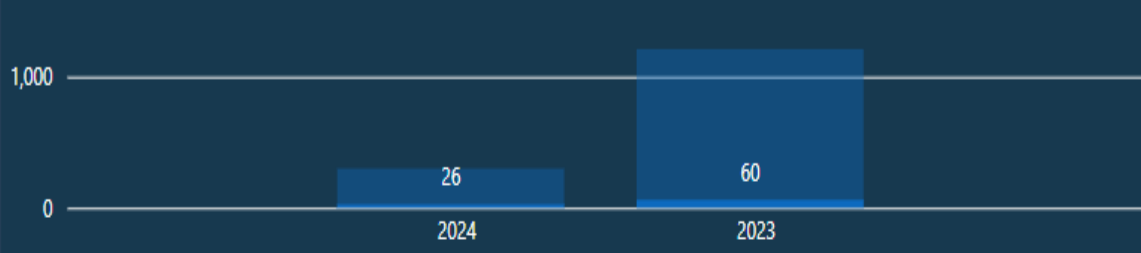
YTD Vs Last YTD



MTD Vs Last MTD



Arrest Count by Year



Date Range Filter

Last 1 Years
3/15/2023 - 3/14/2024

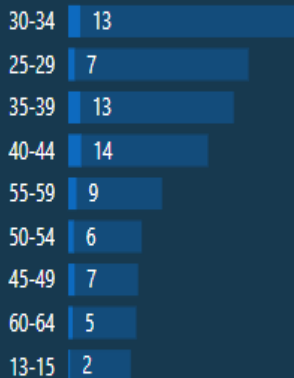
Officer

All

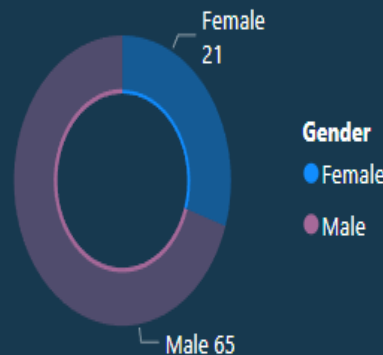
Age Range

All

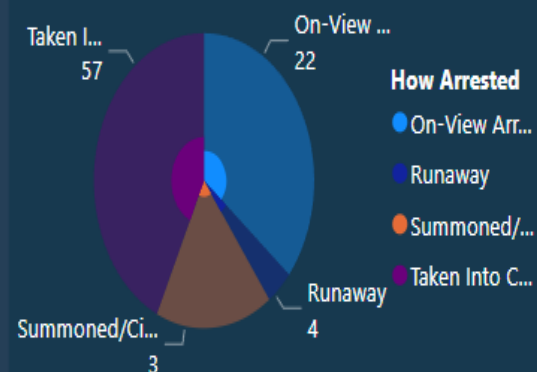
Arrest Count by Age Range



Arrest Count by Gender

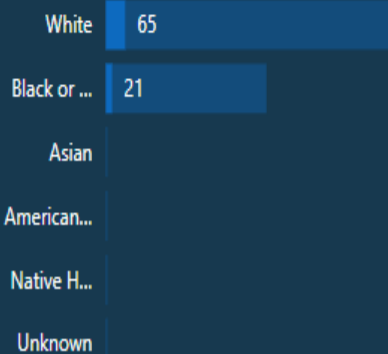


Arrest Count by How Arrested

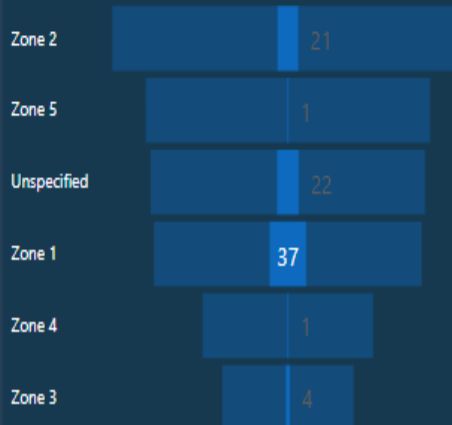


Officer	Arrest Count
Lednický, Paul T	86
Kennedy, LaCarol A	4
Kear, Cody Allen	6
Hundley, Roger M	2
Howard, Sarah L	126
Hoppe, Ryan E	12
Henley, Coby B	9
Harris, Maurice A	4
Total	1509

Arrest Count by Race



Arrest Count by Patrol Area

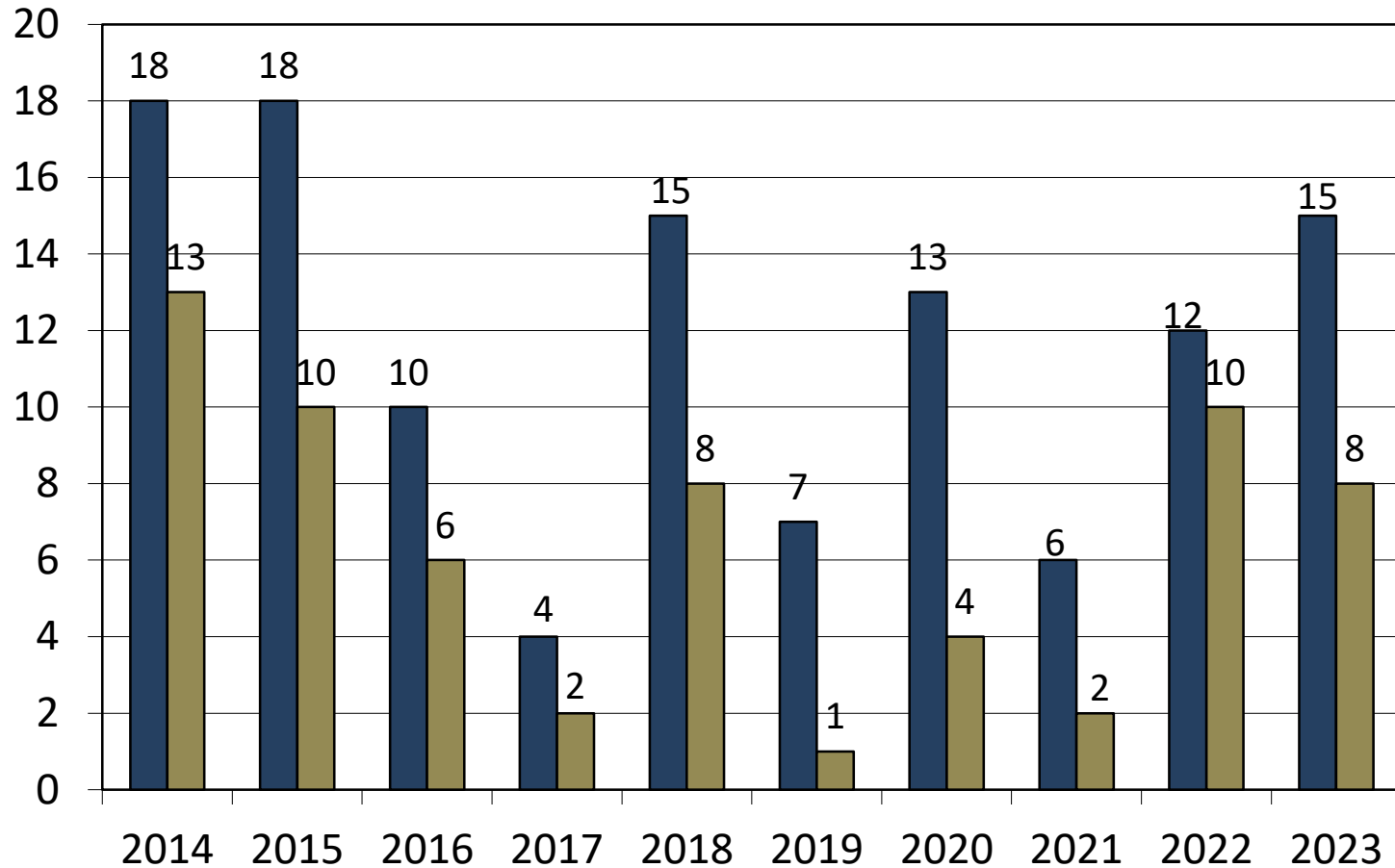


Arrest Count by Month



Arrest#	RMS
24-000297	🔗
24-000296	🔗
24-000270	🔗
24-000246	🔗
24-000240	🔗
24-000239	🔗
24-000238	🔗
24-000202	🔗
24-000201	🔗

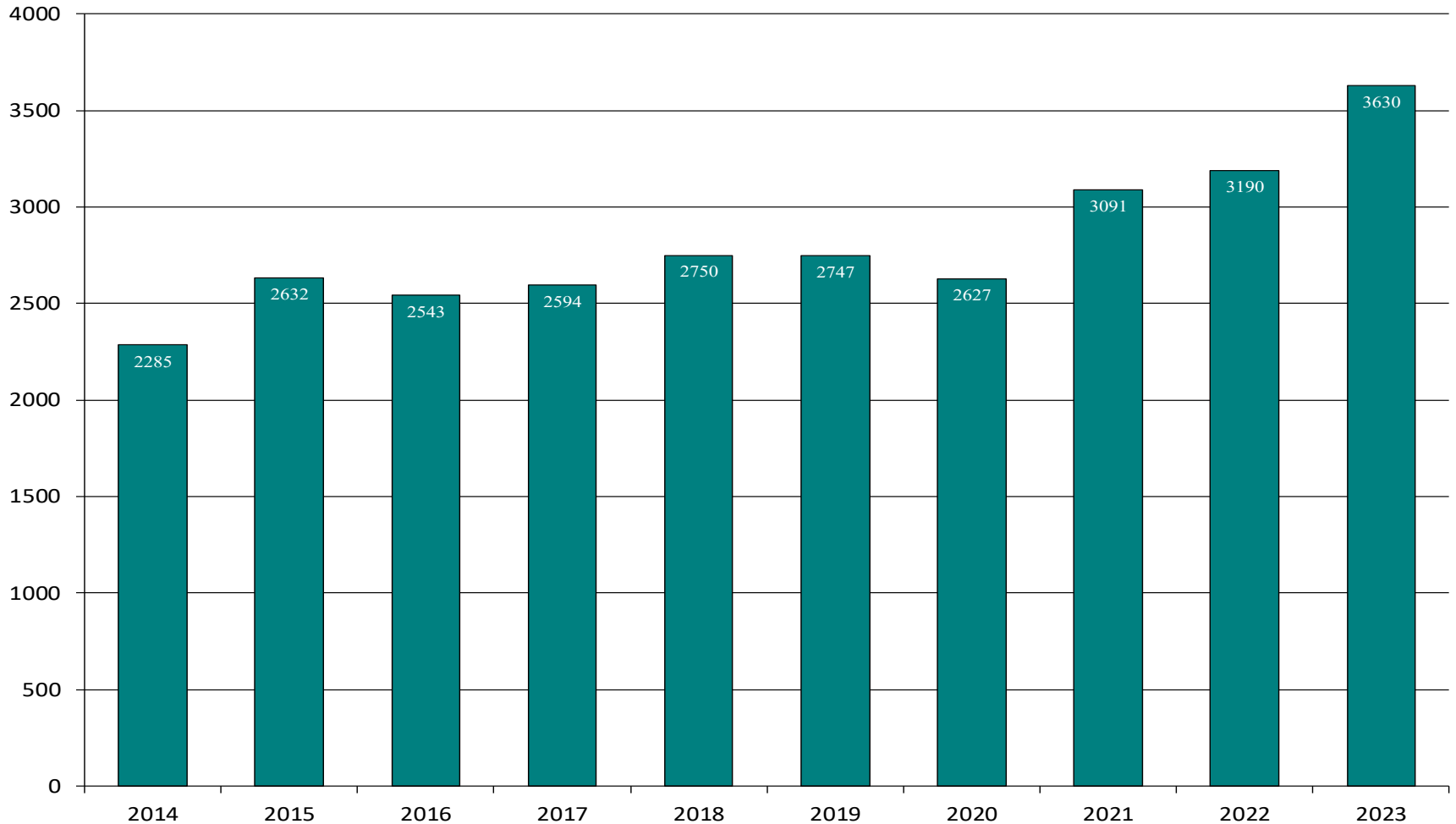
Bomb Unit



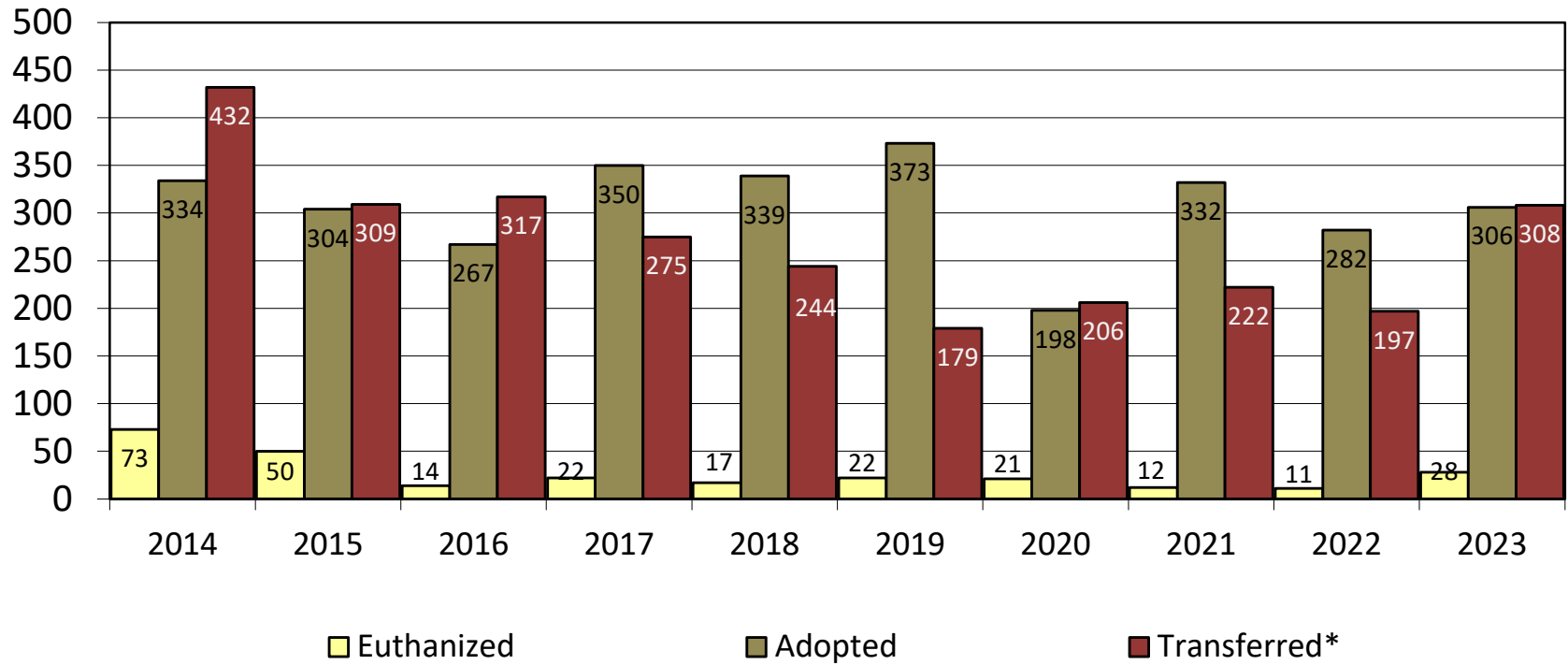
■ Bomb Unit Responses

■ Explosive Device Discovered

Fire Calls Processed by PD Communications

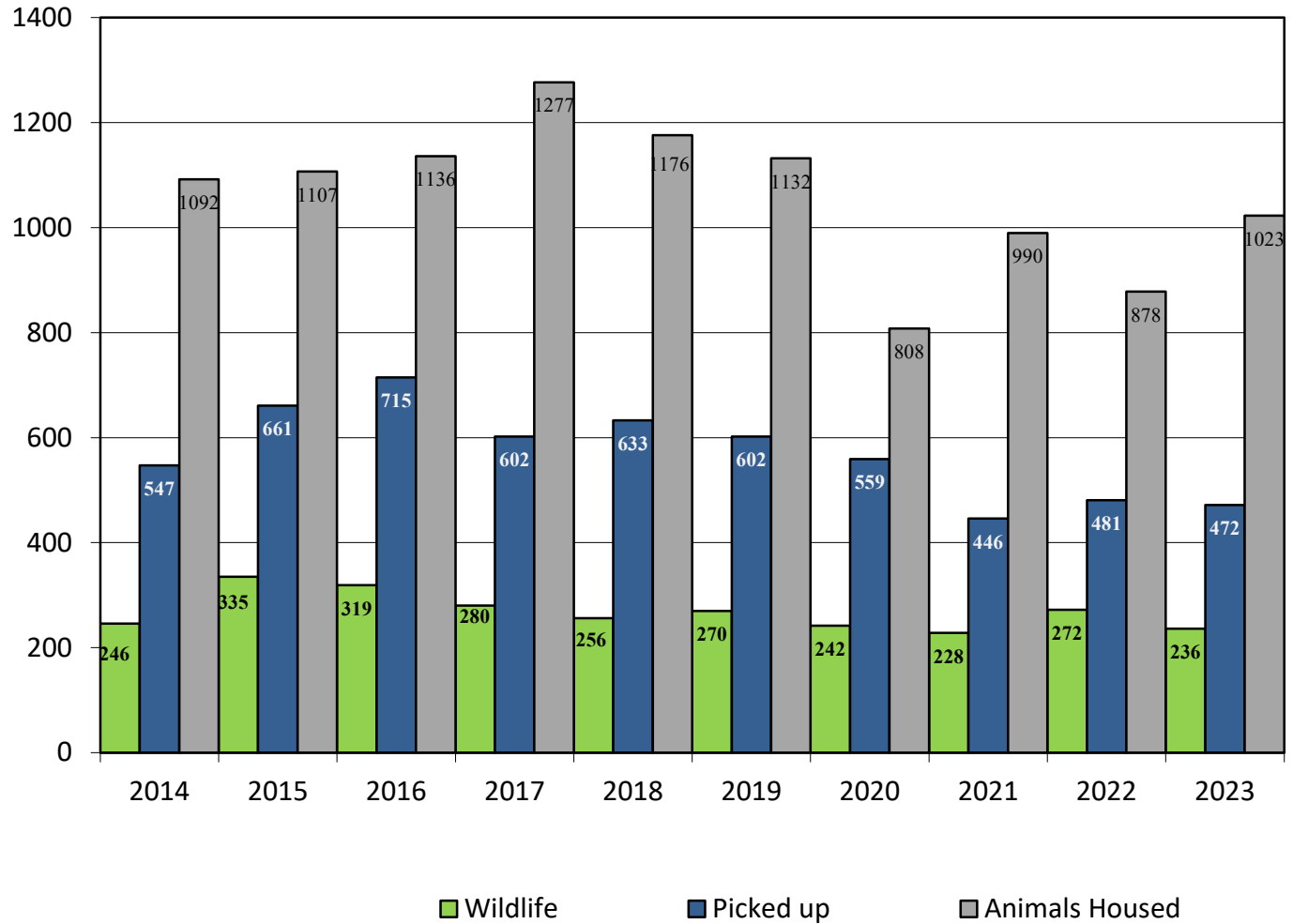


Animal Control

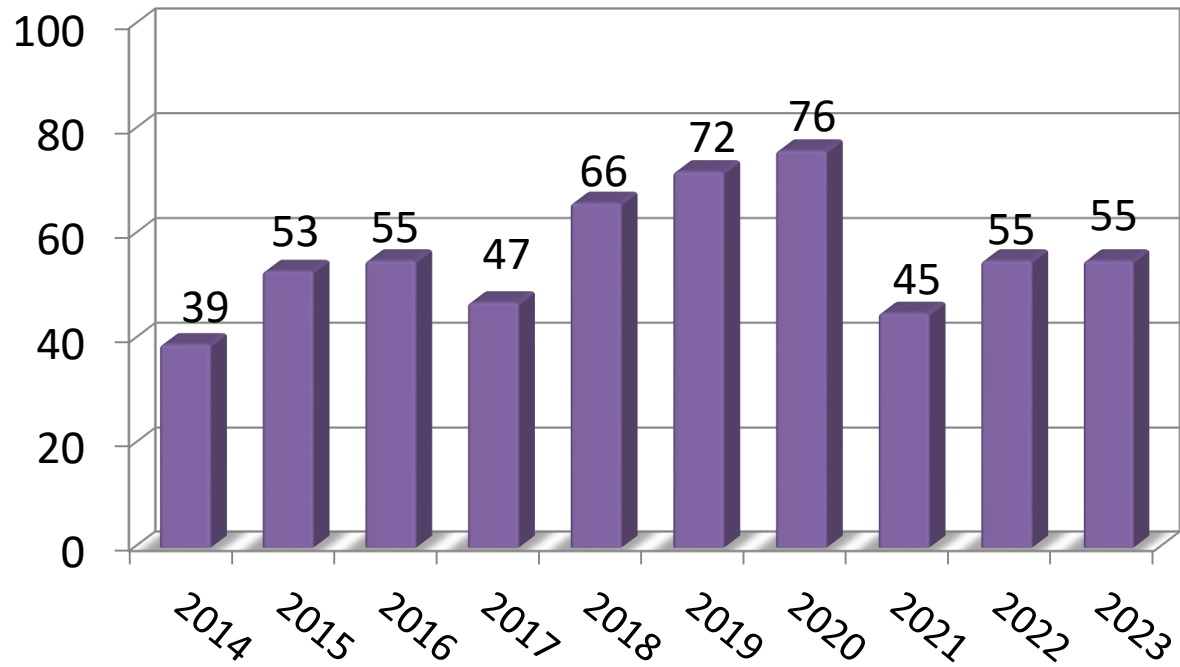


*In 2006 Animal Control began transferring animals to other organizations. These organizations include LAWS, various Humane Societies, and other State Licensed Agencies.

Animals Handled



Bite Cases



Animal Ordinance Enforcement

