



2022 ANNUAL REPORT

2023 QUARTERLY REPORT

JANUARY-MARCH

CITY OF LEAVENWORTH, KS
FIRE DEPARTMENT

Contents

Message from the Chief: 1

Mission, Vision and Values: 2

Organization and Structure: 3

City Demographics: 4

Location Information: 5

Apparatus Fleet: 6

Emergency Response Activity: 7- 8

2022 At a Glance: 9

Training: 10

Community Activities: 11

Station Life: 12



Message from the Chief



Gary W. Birch
2013-Present

"The Leavenworth Fire Department continued to experience an ever-changing environment during 2022, which again required a lot of understanding, collaboration and willingness to adapt. While a majority of our focus centered on ensuring the safest work environment for our employees, which allowed us to sustain the expected high level of service, we also maintained our goals of continual improvement.

The members of this department are dedicated and strive for excellence. This culminated in 2022 with our members' willingness to work overtime to prevent others from being mandated to do so. The Covid years of 2020-2021 presented us with operational challenges, but unlike those years, 2022 presented us with staffing shortages never experienced in the history of this department with eight of our members resigning for other fire departments.

Management and Labor collaborated and made some adjustments in our procedures, which maintained our daily minimum staffing while minimizing a hardship placed on our members.

Much appreciation to our City Manager and City Commission for approving our Finance Director's plan who, through hours of researching and effort, eventually adjusted our starting salary to be more competitive to the surrounding departments.

Although there were obstacles to overcome, the morale of our department has remained high. Members took it upon themselves to do extra work like landscaping around the stations, pouring concrete around the training tower, and even built a roof prop for realistic training.

It is very humbling to see our personnel's level of commitment to meet the continued expectations of our citizens. In nearly 47 years in the fire service, I have never worked with such great people. I am personally grateful to lead an organization that continues to focus on improvement and is up to the challenge to meet the needs of our community."



Sincerely,

Chief Birch

Mission

To protect:

- Life
- Property
- Environment

Vision

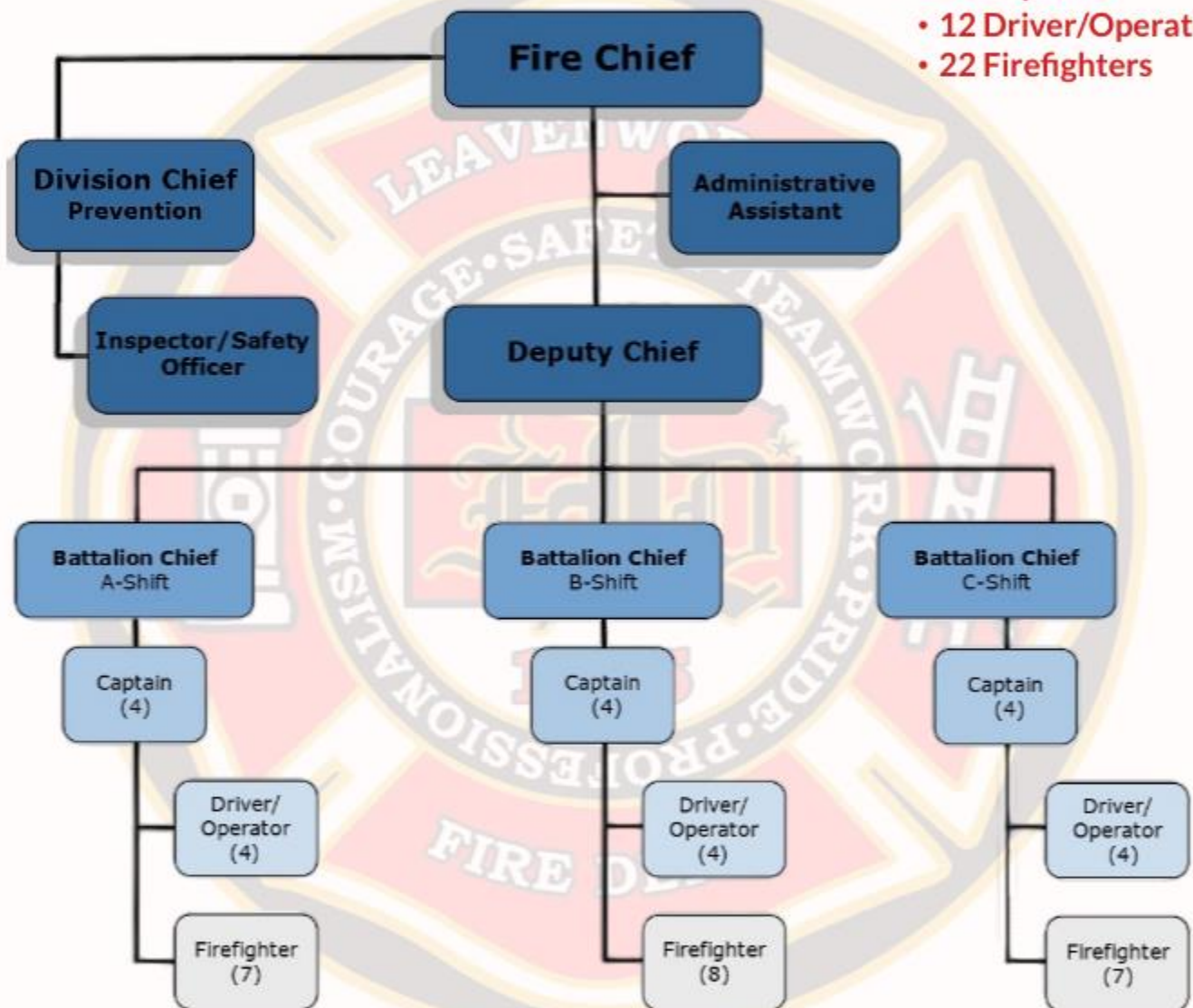
- We will strive to be role models in the community and leaders in our profession.
- We will be accountable to those we serve, our fellow firefighters, and the organizations we interact with.
- We are committed to providing the best public service through innovative training, education, and equipment.

Values

- Safety
- Teamwork
- Pride
- Professionalism
- Courage

Organization and Structure

- 5 Admin Staff
- 3 Battalion Chiefs
- 12 Captains
- 12 Driver/Operators
- 22 Firefighters





Leavenworth, Kansas

POPULATION: 37,000

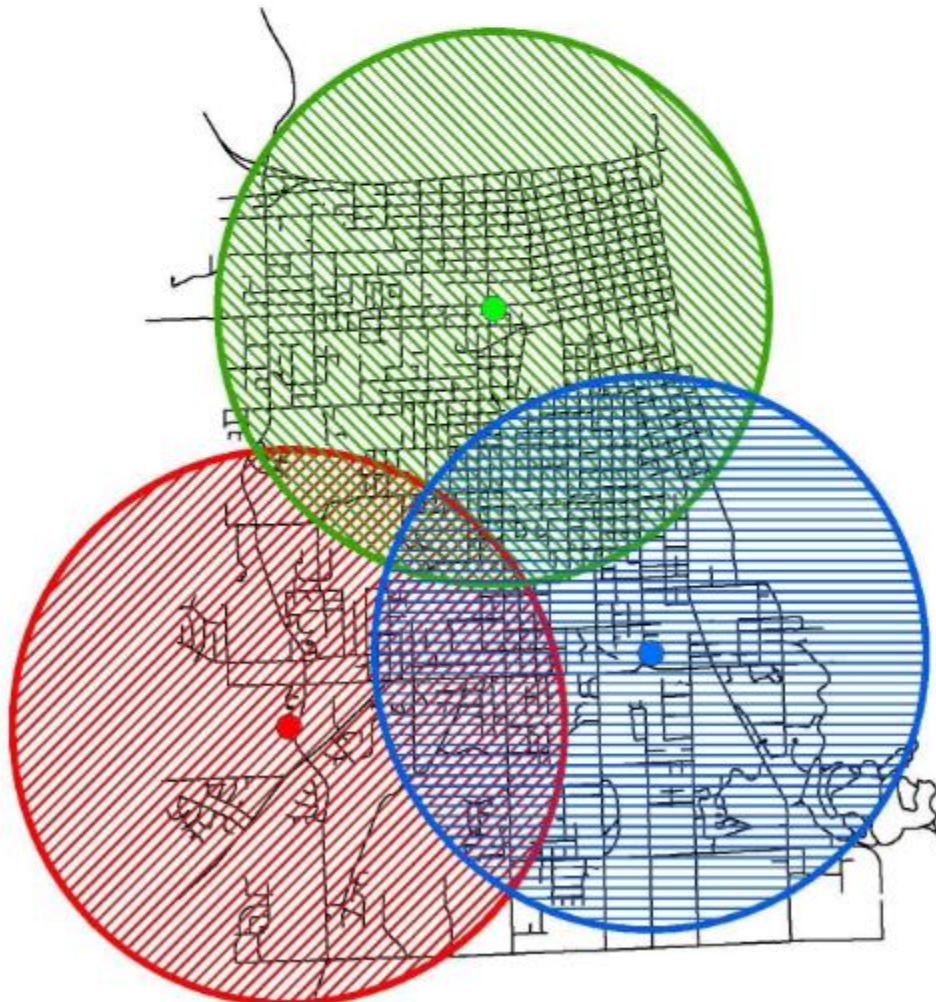
SQUARE MILES: 24

FIRE STATIONS: 3

Simple 1.5 Mile Buffers
Around Each Fire Station



Legend	
Station	
	1
	2
	3



LOCATION INFORMATION



Fire Headquarters

3600 S. 20th St.

- Admin Offices
- Battalion 101
- Engine 1
- Rescue Boat
- Haz-Mat Trailer
- Training Tower



Station 2

925 Shawnee St.

- Engine 2
- Quint 2
- Truck 2



Station 3

2805 2nd Ave.

- Engine 3

APPARATUS FLEET

1 TRAILER



PUMPERS ENGINES

3



2 BOATS

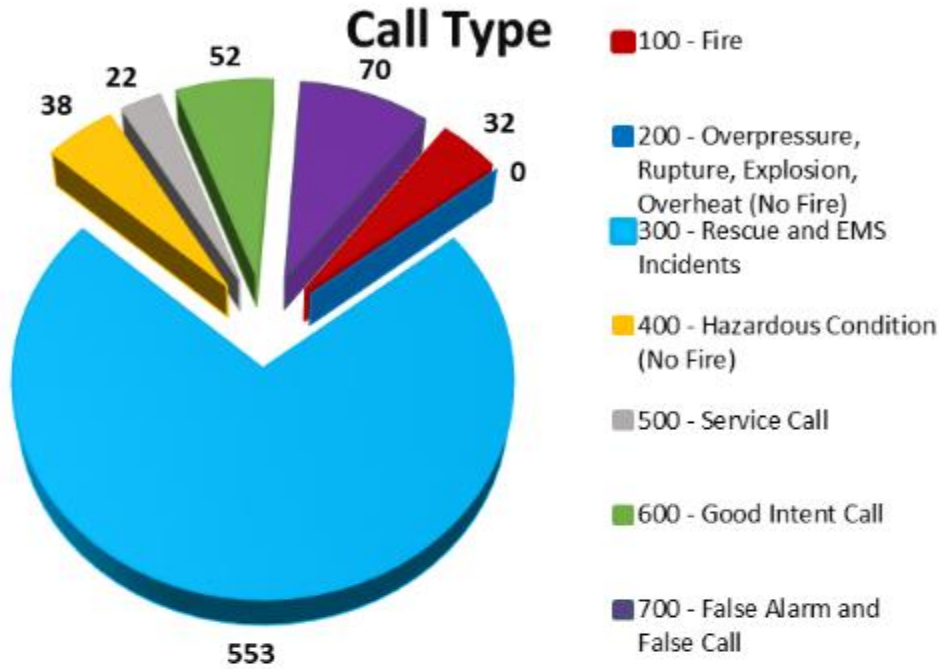


AERIALS

2



EMERGENCY RESPONSE ACTIVITY



2023 1st Quarter Total Calls

767

2023 Average Per Day

8.52

Fire % of Total

32%

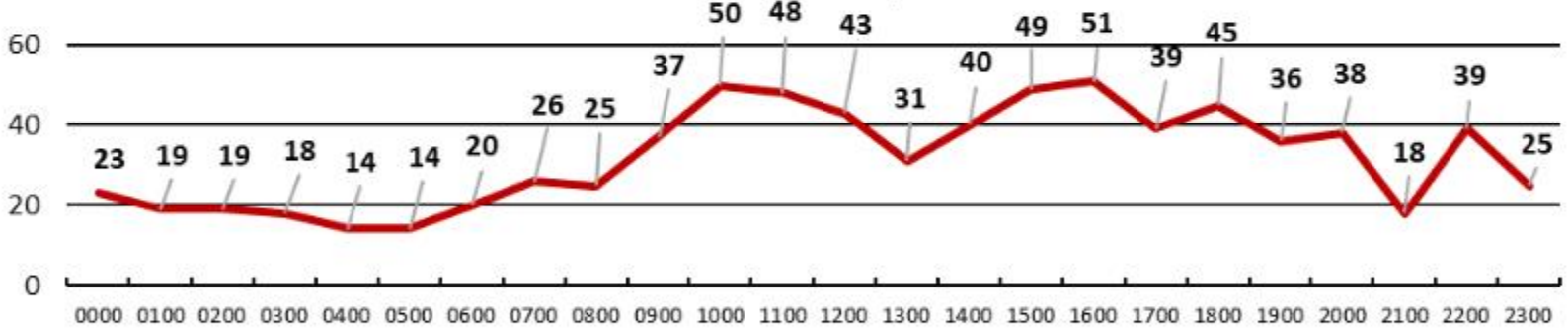
EMS % of Total

68%

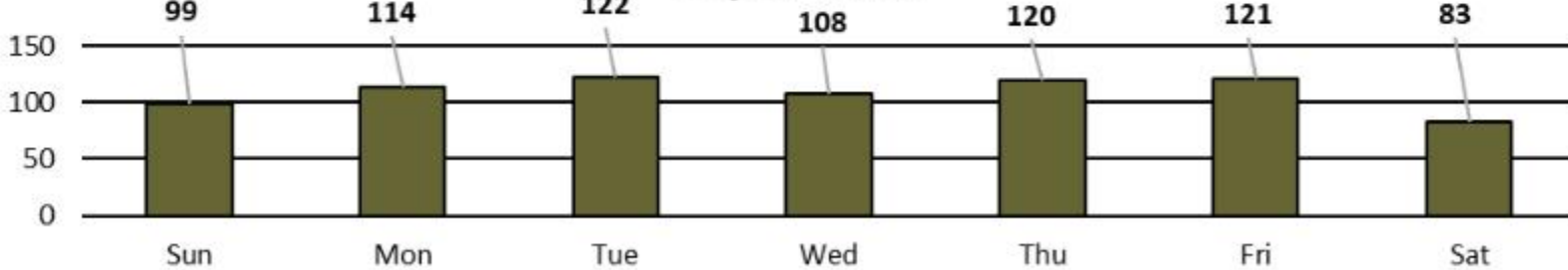
Civilian Injuries/Deaths

8/0

Time of Day



Day of Week



EMERGENCY RESPONSE ACTIVITY

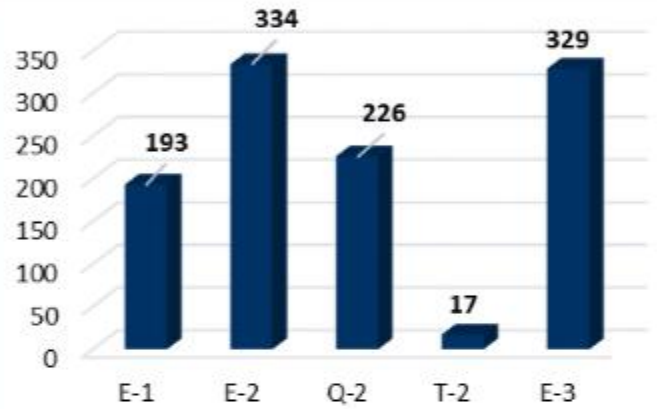
FRACTILE RESPONSE GOAL

(In Minutes)

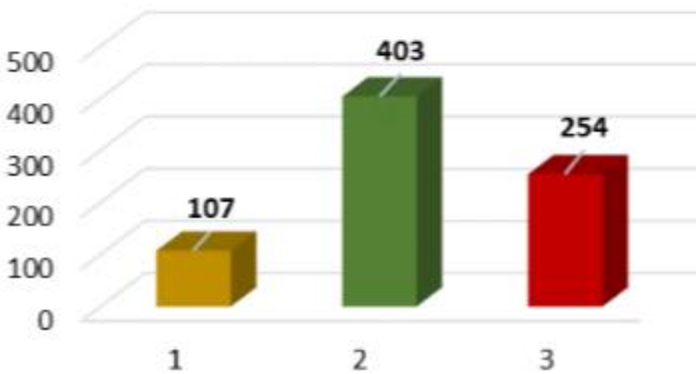
	National Average	2022	1st Quarter 2023
Turnout Time	1:20	2:26	1:32
First Travel Time	4:00	5:30	3:32



2023 CALLS PER APPARATUS



2023 CALLS PER STATION



2022 AT A GLANCE



599

BUSINESS
INSPECTIONS
COMPLETED



FIRE HYDRANTS
FLOW TESTED &
PAINTED

1353



28

GIVEN

MUTUAL AID ASSISTS



7

RECEIVED



59

SMOKE
DETECTORS
INSTALLED



22

COMMUNITY
EVENTS
ATTENDED



11

STATION
TOURS
GIVEN



9

SCHOOLS/
DAYCARES
VISITED

TRAINING



- Extrication
- Trench Rescue
- Haz-Mat
- Roof Access
- Bailout
- EMS
- Water Rescue



COMMUNITY ACTIVITIES

On any given day, staff participate in a variety of activities serving the community to promote fire safety.

Often you can find staff installing smoke detectors, giving a station tour, visiting schools, and participating in public events.

Vietnam Traveling Memorial Wall ● Carry the Load ● Salvation Army Red Kettle Campaign

Veteran's Day Parade ● Wreaths Across America ● LFD Honor Guard





Station Life

In addition to responding to fire and medical emergencies, staff are responsible for, and take pride in, performing additional tasks and activities that include maintaining the building, grounds and vehicles at their assigned stations, as well as studying and training to stay current with life-saving and firefighting techniques.

As time permits, focus on physical fitness and promotional advancement intertwines with other duties of daily life at the stations that act as their second home.

