



**City of Leavenworth**  
**100 N. 5<sup>th</sup> Street**  
**Leavenworth, Kansas 66048**

**CITY COMMISSION STUDY SESSION**  
**COMMISSION CHAMBERS**  
**TUESDAY, SEPTEMBER 6, 2022 6:00 P.M.**

**Welcome to your City Commission Study Session – Please turn off or silence all cell phones during the meeting**  
*Meetings are televised everyday on Channel 2 at 6 p.m. and midnight and available for viewing on YouTube*

**Study Session:**

1. Leavenworth School District (USD 453) Quarterly Update (pg. 02)
2. Camp Leavenworth Update (pg. 03)
3. Solid Waste Operations Discussion (pg. 04)

**STUDY SESSION POLICY REPORT  
PRESENTATION BY  
LEAVENWORTH UNIFIED SCHOOL DISTRICT NO. 453**

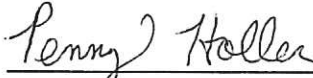
**SEPTEMBER 6, 2022**

**ISSUE:**

Leavenworth Unified School District No. 453 will provide a quarterly update to the City Commission.

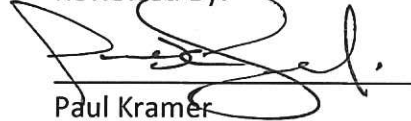
**POLICY REPORT**  
**Camp Leavenworth Update**  
**September 6, 2022**

Prepared By:



Penny Holler  
Assistant City Manager

Reviewed By:



Paul Kramer  
City Manager

**ISSUE:**

Receive update on planning for the 2022 Camp Leavenworth festival.

**BACKGROUND:**

On September 23 and 24, the City will host the third annual Camp Leavenworth festival. This free and open to the public event will draw locals and visitors alike to celebrate the City. Completed plans include a diverse music line-up spanning Friday and Saturday, along with fun activities, shopping, food vendors, and Friday night fireworks. This year's event includes greater emphasis on Leavenworth talent from craft vendors to musicians. A new business bulletin board will greet visitors near the entrance with local business flyers to encourage future visits. And the event provides a 5k run/walk opportunity, inspired by Leavenworth local Christine Frietchen who returned home after organizing competitive runs on the East Coast. Event Manager Keli O'Neill Wenzel will provide the latest event planning information.

**Policy Report**  
Solid Waste Operations Discussion  
September 6, 2022

Prepared by:



Paul Kramer  
City Manager

**Background:**

The City of Leavenworth Solid Waste Citizens Task Force (TF) presented its report to the City Commission at the Aug. 16 City Commission Study Session. The comprehensive report made several recommendations and comments related to solid waste collections.

**Issue:**

Following the presentation, staff proposes to work with the Commission through a series of meetings to drill down and reach a consensus on the key elements of the report. Each area of recommendation and area of deliberation has implementation, operational, financial and in some cases legal considerations for the Commission. To begin the process, staff has divided items into four areas of concentration, each with a unique set of key factors. Those areas and key factors include:

**1) Collection approach: Hybrid poly-carts and new regulations.**

**a) Commission direction on path forward.**

- Does the City move forward with a poly-cart program
- Communication and rollout

**b) Key factors (to be included in poly-cart policy)**

- Poly-cart election periods
- Purchase, cost and delivery of poly-carts and truck retro-fits
- Replacement and repair
- City Commission adopted Poly-cart policy

**2) Bulky item pickup: Frequency and new regulations**

**a) Commission direction on path forward**

- Does the City move forward with the proposed restrictions on weekly trash service proposed by the TF report (i.e. loose items)

**b) Key factors (to devise a method for dealing with items prohibited by new policy)**

- Is there a "call for service" element
- Is there a prescribed large item pickup – monthly, quarterly, etc.
- Communication and response

### 3) Enforcement approach: Warnings and citations

#### a) Commission direction on path forward

- What are the options to ensure prompt compliance
- Does the City want to move forward with a citation based system

#### b) Key factors

- The issuance of citations is a different approach for property maintenance violations for the City
- The City has the framework in Sec. 38-30 of the City Code of Ordinances that would require minor modifications to authorize select staff to issue citations
- What is the warning, abatement and citation process

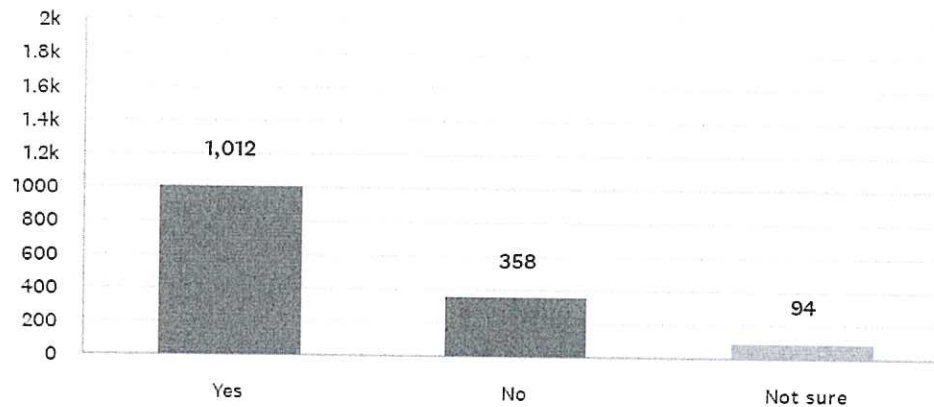
### 4) Trash bags

#### a) Commission direction on path forward.

- Determination of what to do in regards to providing trash bags, per ordinance

#### b) Key factors

- Pg. 10 of the TF report states "The citizens like the distribution of trash bags"
- Q.11 of the survey "Is it important for the City to continue to provide your household with a roll of trash bags twice a year?" was overwhelmingly in favor of continuing the service:



- If poly-carts are looked at favorably, does eliminating bags push a wider adoption of poly-carts
- The change would require an ordinance change

#### Action:

A discussion of the items above, with a consensus to move forward with the proposed approach of addressing the issue divided into the areas above.

#### Attachments:

- TF report
- Survey results





## EXECUTIVE SUMMARY

June 28, 2022

---

City of Leavenworth Solid Waste Citizens Task Force, henceforth referred to as the Task Force (TF), places these recommendations as public record.

### ISSUE

The city currently places no limits on the volume of solid waste (refuse) placed at the curb. While the vast majority of households produce a typical amount of refuse, it is common, every day of the week in different areas of the community, to see the contents of entire households dumped at the curb. This creates a burden on the system for both staff and equipment as the city provided residential trash service was never designed to be the solution for the removal of extreme quantities of discarded items. The city created the TF to recommend a common-sense procedure to address this excessive amount of refuse.

### RECOMMENDATIONS TO THE LEAVENWORTH CITY COMMISSION

After studying the solid waste collection systems in the City of Leavenworth, Kansas, the TF places the following recommendations before the City Commission:

1. The TF recommends a hybrid approach to refuse collection to include both poly-carts and plastic trash bags.
  - a. Place all refuse/yard waste in trash bags or a city-provided poly-cart, with no additional items except a "SHARP OBJECTS" container, if required, automobile tires (as allotted) and tied sticks as outlined below. The city will no longer pick up loose items with normal residential collection.
    - No loose items except tied bundles of sticks and branches (No more than 5 foot in length and no more than 60 pounds – maximum individual branch diameter of 1.5 inches)
    - Residents can use one cardboard box (not to exceed 1.5 cubic feet), to secure sharp items (glass, metal shavings, needles, etc.). Mark box with "SHARP OBJECTS." **Take caution** when exposing cardboard to rain. If rain is expected, do not place box by the curb, save for the next week, or call the Service Center
    - Process tires in the following manner. Call the Service Center for scheduled tire pickup. The city picks up no more than 5 tires at a time and no more than 10 tires a year. Residents can drop off tire at the Service Center on first free Saturdays

- b. The maximum weight for each trash bag is 60 pounds. City crews will not collect bags exceeding this weight.
- c. Contents of city provided poly-carts shall not exceed manufacturer weight restrictions. Poly-cart users shall not overstuff the container as to cause a jam - preventing the free flow of refuse out of the container - when dumped. Poly-cart lids should remain closed at all times to prevent rainwater and animals from entering the container.
- d. City residents are encouraged to use the brush site for yard waste (grass clippings, leaves, sticks, branches, etc...). The TF recommends modifying brush site hours of operation to be open later (one or two evenings per week) to address peak mowing and fall leaf seasons.
- e. The city should promote and educate residents about the brush site, first Saturdays at the Service Center, and a pickup service for "bulk" items. Look to expand or adjust hours of operation for residents to haul bulk items to the Service Center. The city should maintain a list of private, licensed contractors who can dispose of remodeling debris or disposed items from emptying a house or apartment of its contents.
- f. Residents need to coordinate with the City of Leavenworth Solid Waste Department for furniture, mattress, and appliance pick up (Grapple Box Truck) up to one time a month or drop off at the Service Center during free first Saturdays. The service is for one or two items that exceed the weight limit of 60 pounds. The Service Center will establish a pickup time (normally on a Friday). The resident should place the item at the curb no more than 24 hours prior to the pickup day.
- g. Recommend collection crews have the backing of the city to say, "No" to the pickup of refuse if a violation occurs. The TF recommends, if violations occur, that a notice/warning be provided to the resident as to the reason the refuse was not collected. Further violations may result in a fine levied.
- h. Recommend the city prohibit the disposal of the following items in household trash:
 

• Hazardous waste	• Sand	• Needles
• Tires	• Construction materials	• Metal shavings
• Bricks	• Concrete	• Large items weighing more than 60 lbs.
• Cinderblocks	• Cement	
• Soil	• Broken glass	

The definition of "Trash" in Sec 38-1 still applies.

Residents should make arrangements with the city or private a solid waste contractor to remove these items. The resident retains the option to take any items to the transfer station, landfill, or other agency for the disposal.

2. Contractors working on a resident's home must arrange to haul and dispose of construction debris which includes carpet and carpet pad removal. The city needs to educate residents and contractors on

this requirement. Recommend the city look into modifying contractor permits to address disposal of construction debris/material.

3. The TF recommends that in the best interest of the city's residents, refuse collection should remain a city-provided service.
4. Recommend keeping the 24-hour placement of refuse at the curb in advance of scheduled pickup.
5. Recommend large amounts of refuse (whole home) utilize the free first Saturdays for large items or rent a dumpster to dispose of property left by vacating renters. City should maintain a list of private contractors who, at the property owner's expense, can remove the material.
6. Recommend a date of January 2023 for the city to stop providing trash bags (recommend the repeal of Sec 38-31 – Plastic Refuse Bags Provided by the city). Currently this is not the best use of a limited budget due to the high price of plastic bags in today's economy. The poly-cart replaces the need for the city to continue issuing trash bags.
7. Recommend that Household Hazardous Waste (HHW) and materials be disposed of at the Leavenworth County Landfill.
8. Recommend keeping the restriction of "no more than ten tires a year." Residents can schedule a pickup day. The city will collect tires and dispose of them. Five tires at a time, but no more than ten tires a year. Residents can bring tires to the Service Center as well.
9. Recommend residents return moving boxes to the moving company or bring to the recycle center. Residents can also place cardboard in a poly-cart or in trash bags.
10. Recommend the city should not have ordinances that it cannot or will not enforce. Have city staff prepare a series of warnings and fines for residents who violate ordinances regarding solid waste pickup. Enforcement is necessary. Recommend enforcement of the 24-hour curbside placement of refuse through random residential checks by the Solid Waste Foreman. The TF also recommends the city Commission look at fine mechanisms in order to provide a warning for the first violation and the ability for the Solid Waste Foreman to issue additional warnings or fines for any additional occurrences.
11. The TF recommends the city purchase poly-carts using funds provided by the American Rescue Plan Act or Reserve Funds if available.
  - Recommend the purchase of 96-gallon poly-carts for distribution to those residents who request them and that the city retain ownership of the poly-carts. If/when the resident moves, the poly-cart stays with the property.
  - Recommend the city purchase 10,000 poly-carts and distribute them on an as-requested basis. Extra poly-carts will be stored at the Service Center.



- In conjunction with the poly-carts, the TF recommends using the American Rescue Plan Act funding or Reserve Funds, if available, for the retrofit of the city's refuse trucks with poly-cart tippers. These "tippers" aid the collector in dumping the contents of the poly-cart into the truck without lifting.

12. The TF also recommends that the city codify "all" these recommendations into city ordinance.

13. Recommend that the TF reconvene in July 2023 and December 2023 to evaluate the changes made and recommend any additional changes or clarifications that needed.

## PURPOSE

The City of Leavenworth has an excellent Refuse Division that strives to clear all trash on a given trash day regardless of quantity, weather, or staffing level. While the vast majority of households produce a typical amount of refuse (six to eight bags) it is common, every day of the week, in different areas of the community, to see the contents of an entire household dumped at the curb (See attached photos). The unwillingness of property owners to rent dumpsters, contracting a junk-hauling firm or making alternate arrangements hampers the residential refuse service's timely, safe, and effective collection. Property owners often placed these piles at the curb well in advance of the collection day (no more than 24 hours [Sec 38-30.7]). Sometimes weather (wind and rain) affects the items placed by the curb. Animals and pickers often distribute the pile into the street and neighboring properties. The city created the TF to recommend a common-sense procedure to address this excessive amount of refuse.

The TF consists of the following citizens:

- John Denney Jr.
- Jeff Howards
- Christian Howell
- Bryce Miller
- Gerard Overbey
- Anne Slusher
- Sarah Weygand

Regular City Department Staff present at the meetings:

- Brian Faust, Director of Public Works
- Steve King, Solid Waste Foreman
- Derek Burluson, MSC Superintendent

## MISSION

Our mission is to recommend changes, if any, to the City Commission regarding the refuse collection process (rules, regulations, and ordinances). The TF wants to maintain the streamline and safe collection of refuse and ensure common-sense boundaries on the manner in which residents place refuse by the curb each week, while not placing an incremental increase in customer's refuse fees or burdening the citizens with overbearing rules. The TF created a survey for the public outlining some of the areas where friction occurs. The report from the TF is due in the July 2022 timeframe.

The TF entertained the following categories for discussion:

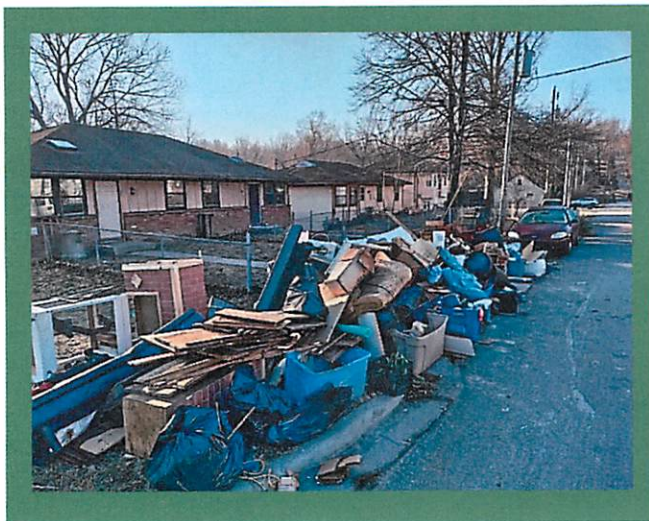
- Overall climate for the effective collection of solid waste.
- Current solid waste operations and types of refuse.
- A review of how other communities address refuse.
- The amount of refuse some citizens place by the curb that require additional trucks, refuse crews, and task hours devoted to one location.
- Safe handling of refuse. Employee injury claims.
- Privatization of refuse collection.
- Changes in collection techniques (bag v. poly-cart) pros and cons.
- City Recycling Center as part of the process.
- City Brush Site as part of the process.
- Large-item pickup or drop-off procedures.
- Resident refuse notifications for various services.

- Refuse trucks, to include Grapple Box, cost, refresh rate, transportation costs, and maintenance.

- Survey to the residents requesting opinions/recommendations on the way ahead (survey attached).

## DISCUSSION

1. The TF commends the city staff for their outstanding performance of their duties in refuse collection.
2. The TF became familiar with the current solid waste management operations for the City of Leavenworth. The TF also considered the many facets of other communities' collection process. The TF reviewed the program's successes, failures, and what it takes to build a winning collection service. The city staff guided the TF through a typical day for collection. The TF understands the requirements for the driver and collector, the transportation costs, the maintenance of trucks, and various loads and delivery locations. The TF understands the process for recycling and the collection of yard waste at the City Brush Site.
3. The TF viewed many photographs consisting of mounds of garbage, in various locations, that appeared to contain the contents of the entire household. Current collection ordinances allow for this excessive waste. This must change so that the burden be placed back onto those limited actors. Actions taken, here in this TF, address the limited actors and not the entire population. In order to address this problem, the TF entertained information from the survey that identified that residents want the option of both poly-carts and bagged refuse. All refuse will be in a poly-cart or in bags, by the curb, on scheduled pickup day, not more than 24 hours prior. The collection crew has the authority to refuse service to the non-compliant.





4. The TF viewed the employee claims of injury. To mitigate this, the TF acknowledged the current bag weight and to contain sharp objects in a cardboard box marked "SHARP." In this effort, the TF will entertain the use of poly-carts and bags. Those that use poly-carts can place sharp objects within. Those that choose bags must use the box method. The use of poly-carts reduces the need for the collector to bend, lift, turn, and throw bags. Poly-cart tippers are part of the truck retrofit which is part of the recommendation process to the City Commission. These truck upgrades and purchases of the poly-carts are available through the American Rescue Plan Act funding or through any Reserve Funding, if available.

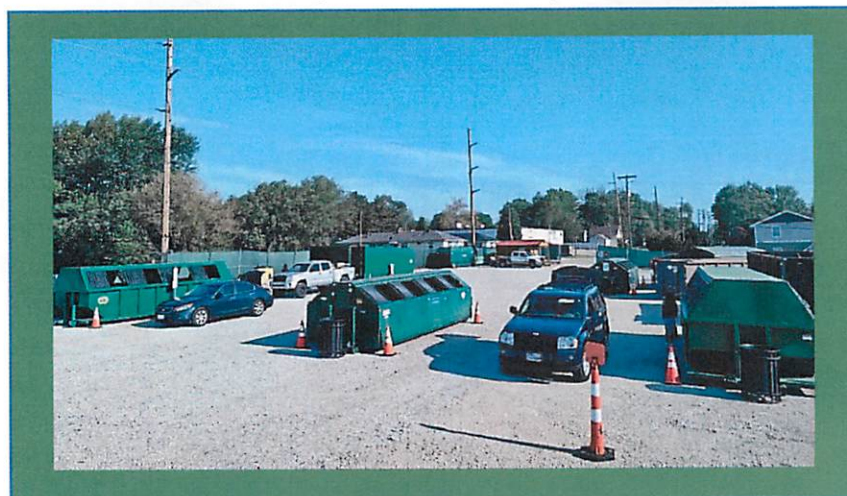
5. The TF considered privatization of services, but response time to customer's needs is paramount. The TF rejected this course of action citing too many risk factors to include:

- Loss of city jobs.
- Customer concerns over vendor's unacceptable reaction time to complaints (lack of customer service).
- Service disruption.
- Potential fee increase and increases over time.
- Loss of flexibility to provide other services.
- The city goes private and it stays private which is cost prohibitive to restart.

6. The TF considered poly-carts in lieu of plastic bags. The TF considered PROs and CONs of both collection processes and determined a hybrid solution is in the best interest of the city's residents, which the survey confirmed.

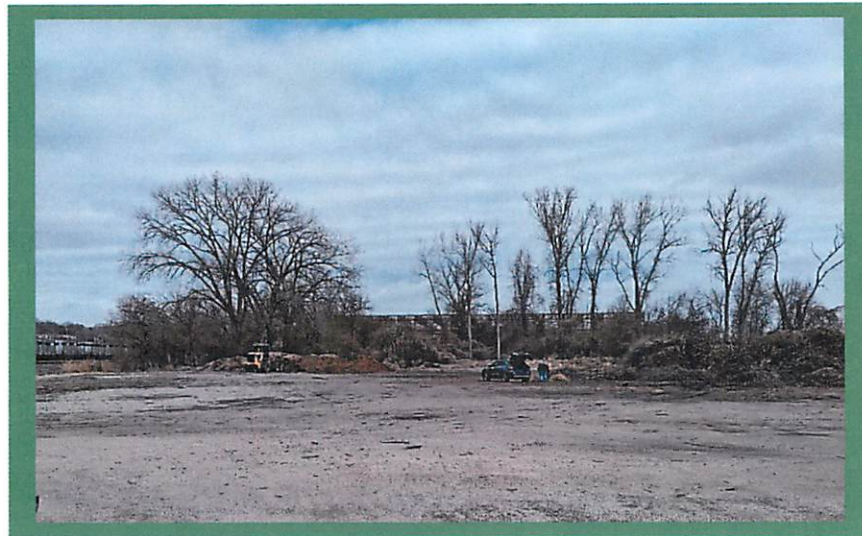
7. The city recently reconfigured the recycle center for better flow. The recycle center offers a place for citizens of the city to go and dump recyclable material. It is limited to glass, plastic, tin cans, aluminum cans, and paper/cardboard. There is also a place for electronic item disposals. There is an open period for residents to come and drop off appliances once a month. The TF asked to look at curbside pickup for recycling. We noted that the resident could pay for curbside recycling through a private contractor. The recycle center should expand hours and continue educating residents on this benefit. During the last fiscal year, the city spent approximately \$6,000 over income at the recycle center, but saved \$19,000 in landfill fees if that same waste had been picked up with the weekly collection.

City of Leavenworth Recycle Center



790 Thornton Street (Pennsylvania/Lawrence Ave Entrance)

8. The city also runs a brush site where residents can dump brush, yard waste, leaves, logs, and other plant material. This is an option to reduce the amount of trash placed at the curb. This is a city-run facility like the recycle center where the resident must bring the waste to the site. The brush site also offers mulch to residents.



City of Leavenworth Brush Site  
1803 S. 2<sup>nd</sup> Street

9. The City's Municipal Service Center offers two different ways to dispose of large appliances and furniture. The grapple box can come at the resident's request or the resident can bring the item to the Service Center.



Large Item Drop-off Area – Free First Saturdays  
790 Thornton Street (Pennsylvania/Lawrence Avenue Entrance)

10. The TF contemplated the amount of information conveyed to the residents about the refuse process, centers, and sites. Facebook has a lot of information pertaining to the process. Flyers are available and the city provides information to residents when they move in and apply for an account.



Informational flyers are in the trash bag distribution. The city also has a refuse app that can provide information on any mobile device.

11. The city has six trucks on a refresh timeline. Each truck costs about \$250K (budgeted). If poly-carts are the future, each truck must have a \$12K upgrade for one tipper. The city also has one box truck set up with a grapple claw and crane to handle heavy items like washers, dryers, stoves/ovens, and refrigerators. This machine can also handle furniture saturated from rain. The last truck considered for purchase as a sole source cost was \$179,699.72 (as of 25 January 2022) with trade-in.

12. At the recommendation of the city staff, the TF formulated and issued a survey drawing from the population on a best course of action regarding massive dumpsites on resident's lawns masquerading as residential curbside pickup. Attached to this document is the bank of questions along with an analysis matrix outlining the conclusions. These are also recommendations and may not reflect the route the TF takes for the overall recommendation based on underlying facts and assumptions bearing on the problem.

### SURVEY PREFACE

The City of Leavenworth sent out a survey to its residents. The survey contained 25 questions. Approximately 1,400 city residents participated in the survey - that is 14% of the household population of 10,000.

- Current collection process meets the need of the community. This may improve with the initiation of the poly-cart.
- There is overwhelming agreement on the city doing a good job of refuse collection.
- Yes, residents usually place items, other than bags, at the curb. [We are advocating against this for safety and streamlining pickup process.](#)
- The city must maintain the ability to pick up bulk items. [The city continues this service with notification and some restrictions.](#)
- No, the city should NOT charge for oversized loads. [TF recommends making this service available once a month. Residents can call a maximum of one time a month for bulk-item pickup. Bulk is one or two items. A bulk item equals a large item that the collection crew cannot lift without the risk of serious injury.](#)
- There should NOT be a limit on the amount of trash placed by the curb. [Residents enjoy very little limits on disposal. The TF advocates/recommends all acceptable refuse be in a poly-cart or in black refuse bags and placed by the curb each scheduled week. This includes grass clippings, and/or leaves, tied sticks, and branches of no more than five feet in length, and one cardboard box not to exceed 1.5 cubic feet for "SHARP OBJECTS". There is still no limit on the number of bags placed by the curb. Residents can use both bags and a poly-cart if needed.](#)



- The citizens like the distribution of trash bags. **While citizens want the city to continue to sell trash bags, it is not economically feasible with the acceptance of the poly-cart recommendation.**
- Citizens are resistant to any change that would increase their fees.
- Citizens do support the continuation of reduced fees for seniors who qualify as low income.
- Citizens do not support reduced fees for low-income families if that causes an increase in their fees.
- Citizens prefer trash bags to poly-carts. **The TF advocates for poly-carts/bag hybrid.**
- There were seven questions on recycling. This program continues to reduce the overall amount of refuse the city must collect. Recycling is important, but not enough to pay for curbside pickup. The city continues to spend \$6K on recyclable material disposal while saving \$16K in taking that same recycle material to the transfer station or landfill.

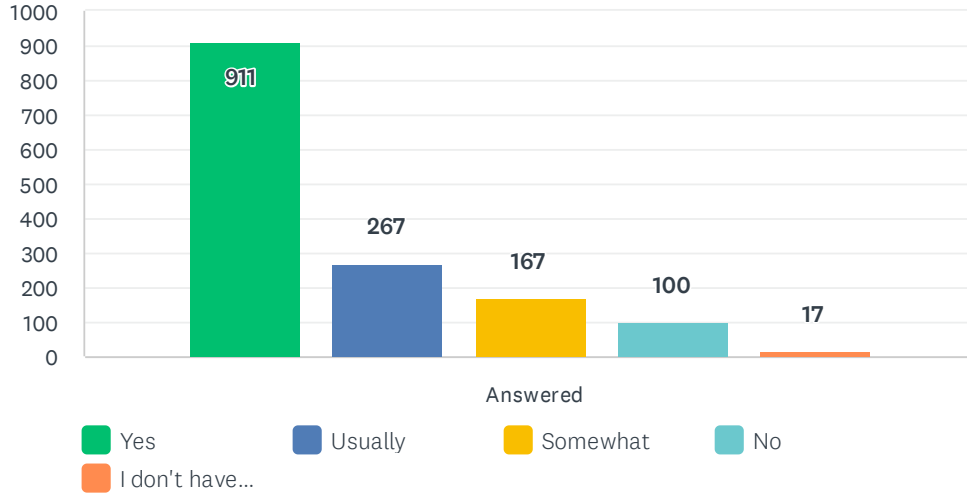
The TF combined some questions in this response. On some answers, the residents answered the question not knowing that their answers may cause their fees to increase. Most of the survey confirmed our initial assertions.

Survey attached for City Commission review.

**Blue** = Variations between what the survey showed and what the TF recommends.

# Q1 Does the current refuse collection for the City of Leavenworth meet your needs?

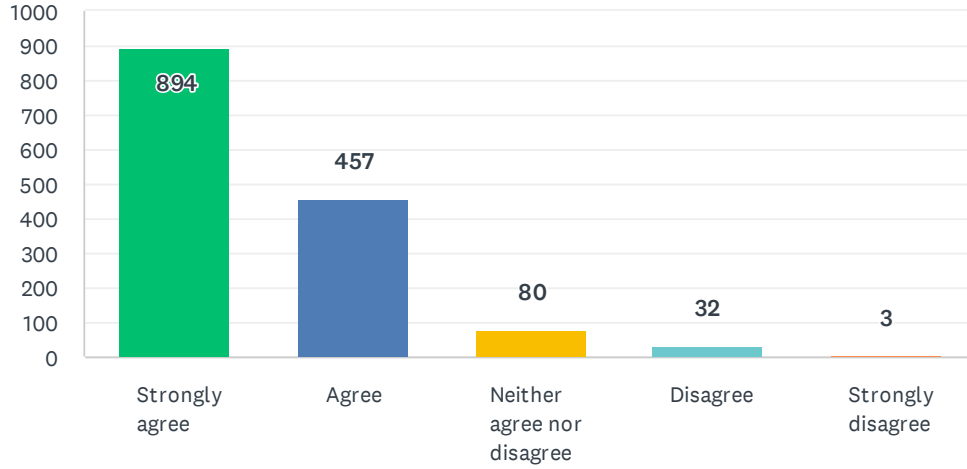
Answered: 1,462 Skipped: 9



	YES	USUALLY	SOMEWHAT	NO	I DON'T HAVE AN OPINION	TOTAL	WEIGHTED AVERAGE
Answered	62.31%	18.26%	11.42%	6.84%	1.16%	1,462	1.04
	911	267	167	100	17		

## Q2 Do you agree with this statement: "The City of Leavenworth does a good job of picking up residential trash at the curb."

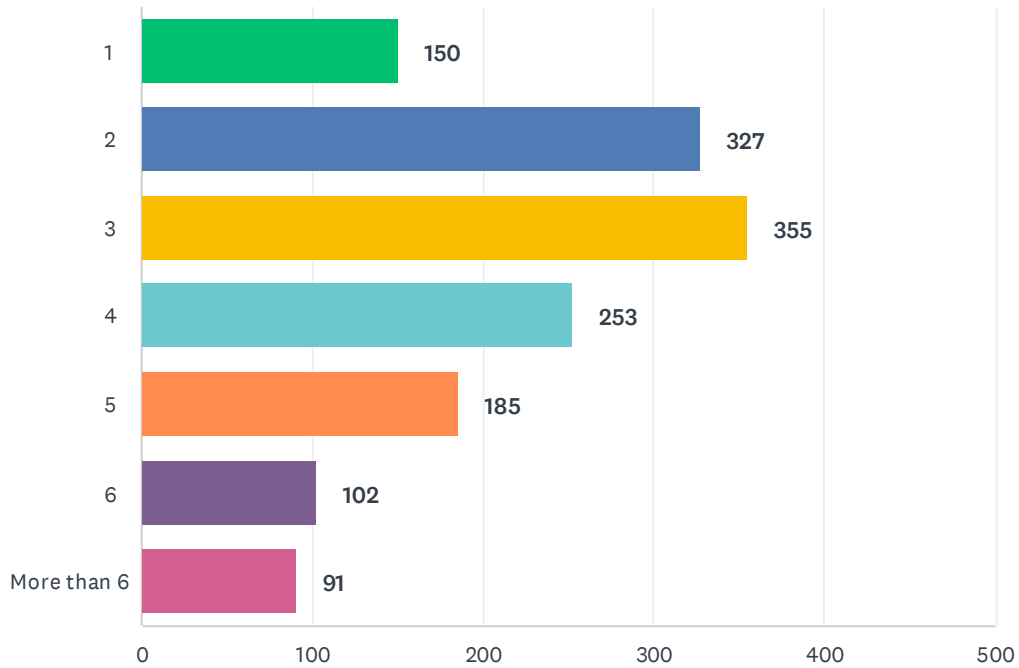
Answered: 1,466 Skipped: 5



ANSWER CHOICES	RESPONSES	
Strongly agree	60.98%	894
Agree	31.17%	457
Neither agree nor disagree	5.46%	80
Disagree	2.18%	32
Strongly disagree	0.20%	3
<b>TOTAL</b>		<b>1,466</b>

### Q3 During a typical week, how many bags of trash do you place at the curb?

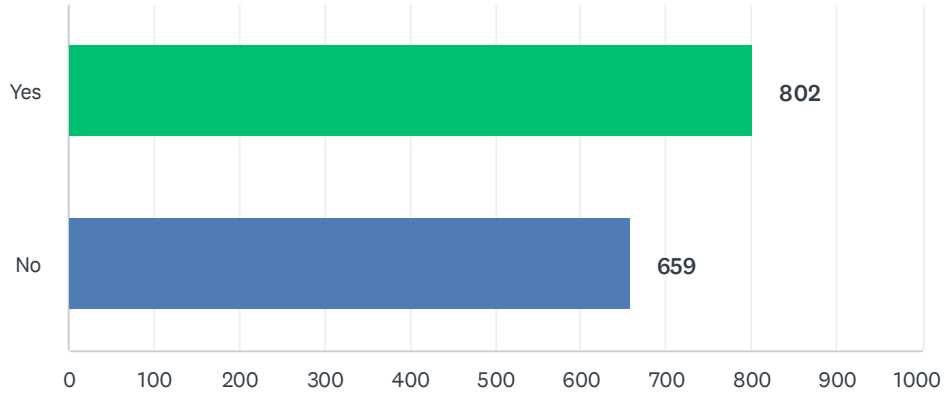
Answered: 1,463 Skipped: 8



ANSWER CHOICES	RESPONSES	
1	10.25%	150
2	22.35%	327
3	24.27%	355
4	17.29%	253
5	12.65%	185
6	6.97%	102
More than 6	6.22%	91
<b>TOTAL</b>		<b>1,463</b>

**Q4 Do you normally place items for pick-up that are not in bags? This could include boxes, loose material, construction debris, furniture or other items that don't fit in a bag.**

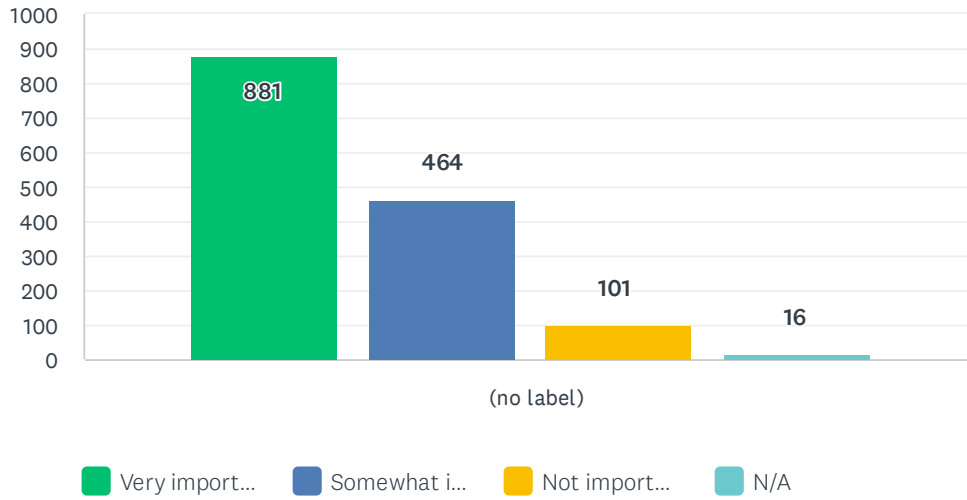
Answered: 1,461 Skipped: 10



ANSWER CHOICES	RESPONSES
Yes	54.89% 802
No	45.11% 659
TOTAL	1,461

## Q5 How important is it for the City to pick up bulk refuse, such as appliances, furniture, mattresses and other items that don't fit into trash bags?

Answered: 1,462 Skipped: 9

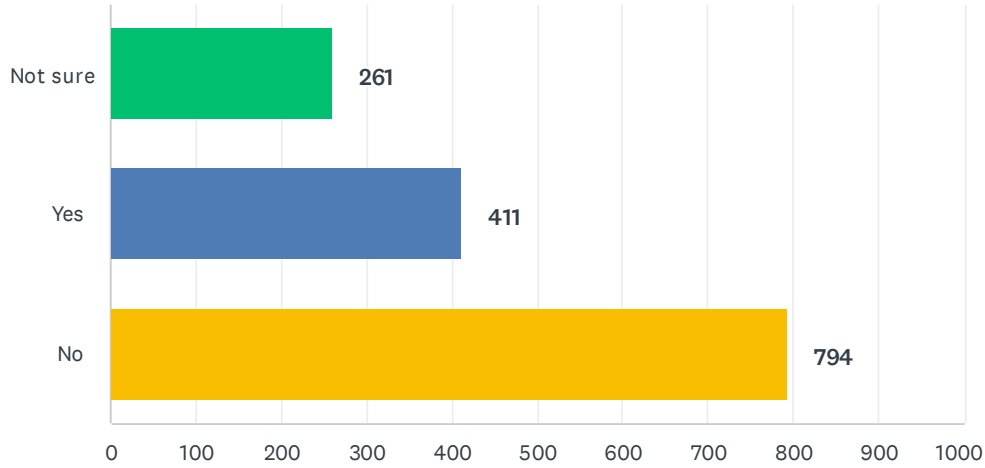


	VERY IMPORTANT	SOMEWHAT IMPORTANT	NOT IMPORTANT	N/A	TOTAL	WEIGHTED AVERAGE
(no label)	60.26% 881	31.74% 464	6.91% 101	1.09% 16	1,462	1.46



### Q6 Should the City of Leavenworth charge a separate fee for picking up oversized loads that do not fit in bags, such as appliances, furniture and mattresses?

Answered: 1,466 Skipped: 5



ANSWER CHOICES	RESPONSES	
Not sure	17.80%	261
Yes	28.04%	411
No	54.16%	794
<b>TOTAL</b>		<b>1,466</b>

## Q7 Should there be a limit on the amount of trash placed by the curb each week?

Answered: 1,463 Skipped: 8

ANSWER CHOICES	RESPONSES	
Not sure	10.66%	156
Yes	19.28%	282
No	70.06%	1,025
<b>TOTAL</b>		<b>1,463</b>

**Q8 If there is a limit on the amount of trash placed by the curb each week, should there be a restriction to bags or containers only (no loose items?)**

Answered: 1,451 Skipped: 20

ANSWER CHOICES	RESPONSES	
Yes	30.60%	444
No	69.40%	1,007
TOTAL	1,451	

## Q9 Do you think it would improve the appearance of the community if there were:

Answered: 1,465 Skipped: 6

Yes/No	YES	NO	TOTAL
A limitation on the amount of trash disposed of weekly.	23.55% 341	76.45% 1,107	1,448
A requirement that all trash must be in bags.	36.09% 524	63.91% 928	1,452
A requirement that all trash must be placed in approved containers (such as poly-carts).	45.04% 654	54.96% 798	1,452

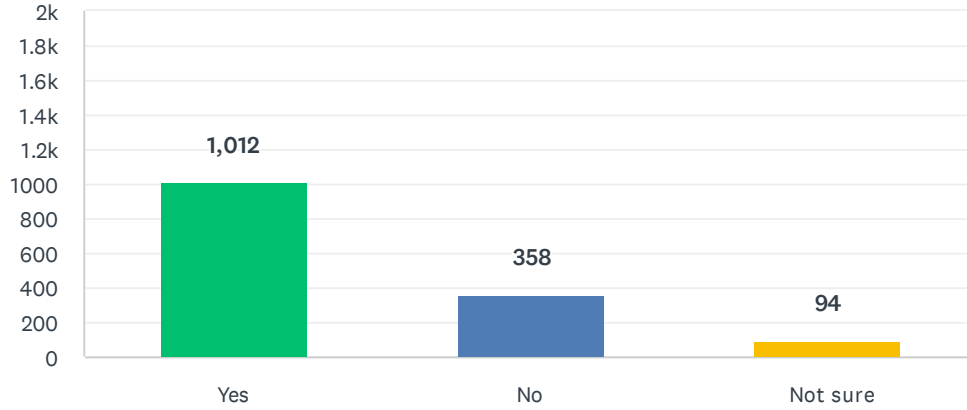
## Q10 Prioritize the importance of a program that offers the following service:

Answered: 1,467 Skipped: 4

	VERY IMPORTANT	SOMEWHAT	NEUTRAL	NOT VERY IMPORTANT	LEAST IMPORTANT	TOTAL
Regular Household Trash	95.89% 1,401	2.60% 38	1.16% 17	0.21% 3	0.14% 2	1,461
Yard Waste (leaves/grass)	43.42% 633	33.54% 489	14.13% 206	5.69% 83	3.22% 47	1,458
Bulk Items (Furniture/Appliances)	37.09% 540	38.53% 561	16.14% 235	5.49% 80	2.75% 40	1,456
Household Hazardous Waste (paints chemicals)	31.55% 461	26.01% 380	23.89% 349	10.47% 153	8.08% 118	1,461
Tree/Brush Disposal	36.85% 534	34.37% 498	17.60% 255	7.38% 107	3.80% 55	1,449
Disposal of electronics/E-Waste	28.43% 414	32.42% 472	24.73% 360	8.04% 117	6.39% 93	1,456

## Q11 Is it important for the City to continue to provide your household with a roll of trash bags twice a year?

Answered: 1,464 Skipped: 7

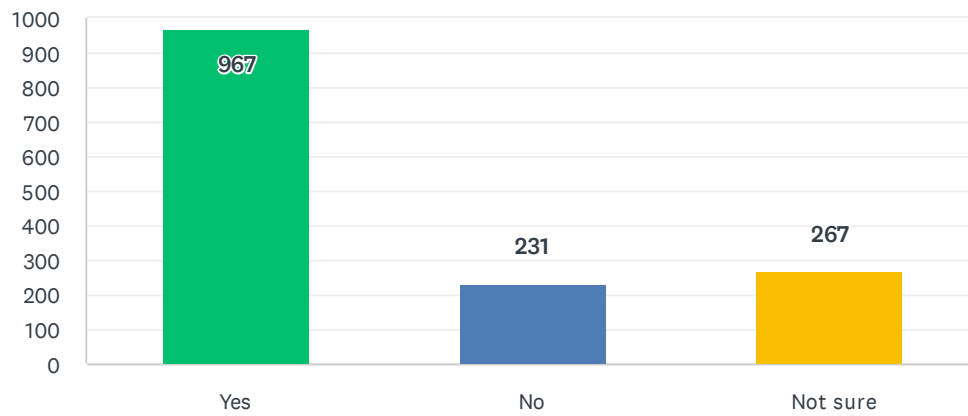


ANSWER CHOICES	RESPONSES	
Yes	69.13%	1,012
No	24.45%	358
Not sure	6.42%	94
<b>TOTAL</b>		<b>1,464</b>



## Q12 Should the City continue selling trash bags?

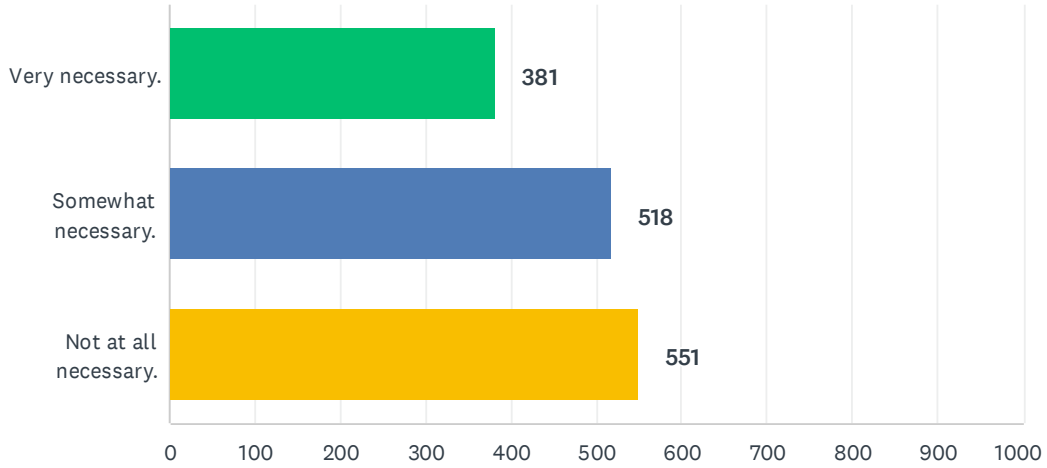
Answered: 1,465 Skipped: 6



ANSWER CHOICES	RESPONSES	
Yes	66.01%	967
No	15.77%	231
Not sure	18.23%	267
<b>TOTAL</b>		<b>1,465</b>

### Q13 How necessary is it for property owners to be responsible for coordinating with a private company for timely disposal of trash that does not fit in a bag?

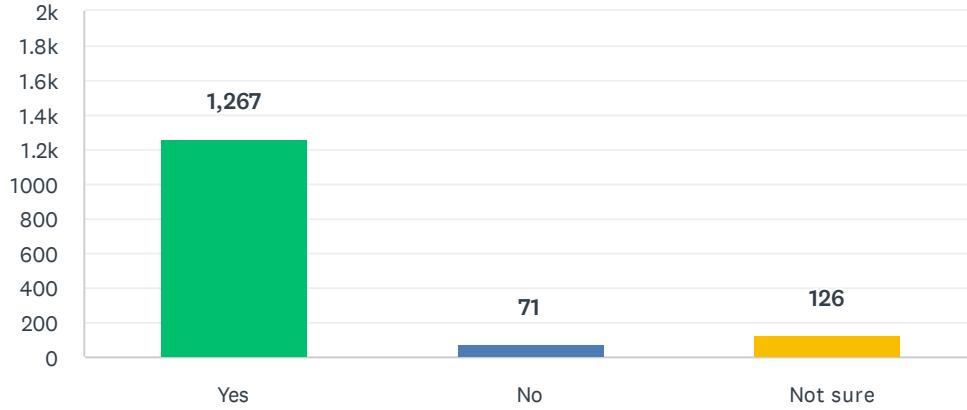
Answered: 1,450 Skipped: 21



ANSWER CHOICES	RESPONSES	
Very necessary.	26.28%	381
Somewhat necessary.	35.72%	518
Not at all necessary.	38.00%	551
TOTAL		1,450

### Q14 Should the City continue to offer a Senior Rebate Program that waives refuse and other fees for seniors who qualify as low income?

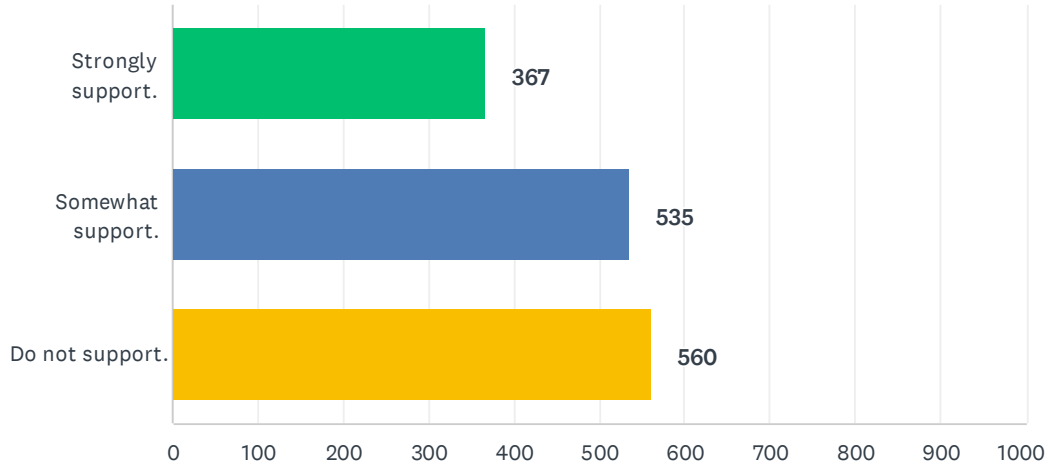
Answered: 1,464 Skipped: 7



ANSWER CHOICES	RESPONSES	
Yes	86.54%	1,267
No	4.85%	71
Not sure	8.61%	126
<b>TOTAL</b>		<b>1,464</b>

### Q15 How much would you support a program to reduce fees for trash pickup for low income families even if it increases your rates?

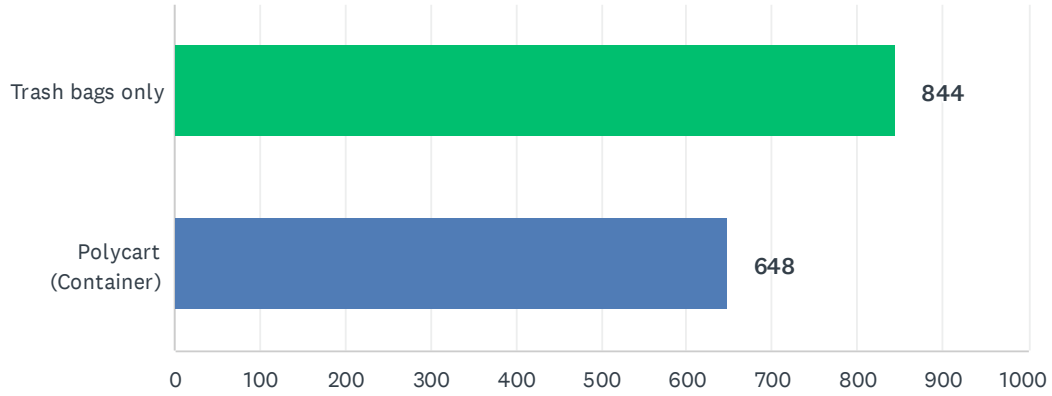
Answered: 1,462 Skipped: 9



ANSWER CHOICES	RESPONSES	
Strongly support.	25.10%	367
Somewhat support.	36.59%	535
Do not support.	38.30%	560
<b>TOTAL</b>		<b>1,462</b>

### Q16 Would you prefer to continue using trash bags only or use a poly-cart (container) instead?

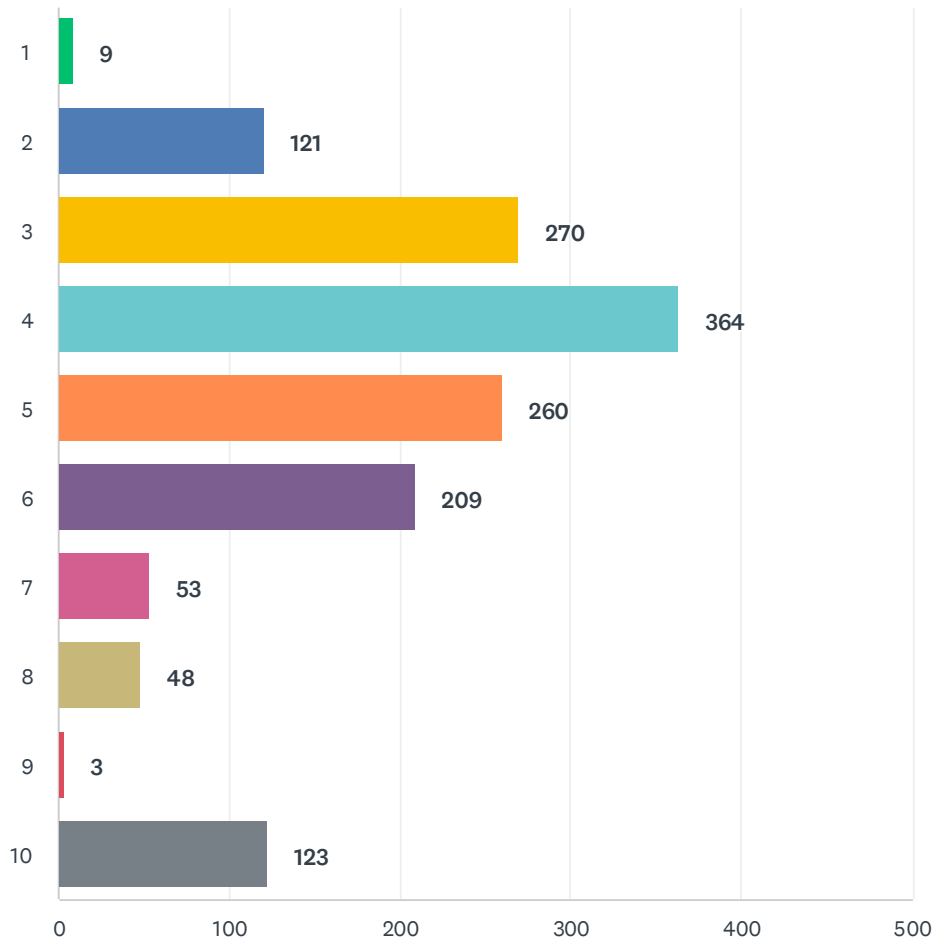
Answered: 1,455 Skipped: 16



ANSWER CHOICES	RESPONSES	
Trash bags only	58.01%	844
Polycart (Container)	44.54%	648
Total Respondents: 1,455		

### Q17 If the city continues picking up trash bags, what is a reasonable number of trash bags to use during a normal week (not including the fall leaf and holiday seasons)?

Answered: 1,460 Skipped: 11



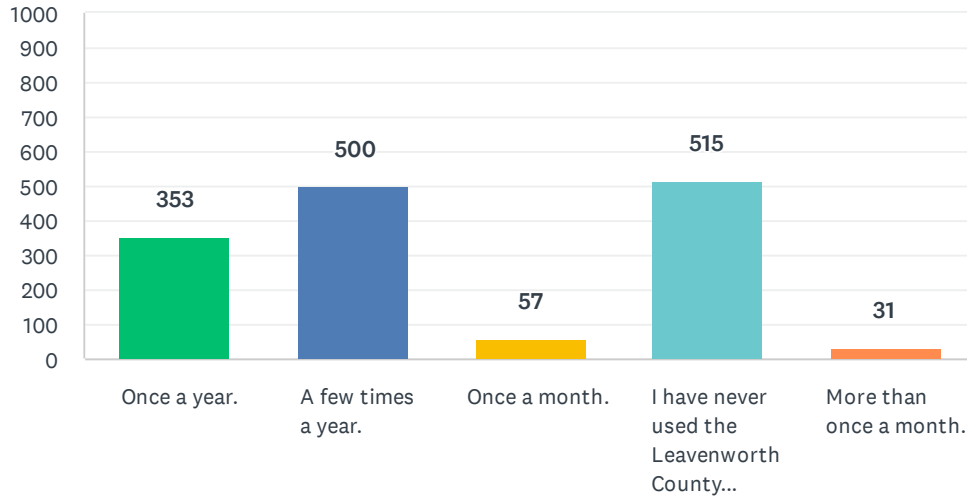


## Leavenworth Trash and Recycling Survey

ANSWER CHOICES	RESPONSES	
1	0.62%	9
2	8.29%	121
3	18.49%	270
4	24.93%	364
5	17.81%	260
6	14.32%	209
7	3.63%	53
8	3.29%	48
9	0.21%	3
10	8.42%	123
TOTAL	1,460	

### Q18 How many times a year do you use the Leavenworth County Transfer Station 24967 136th St, Lansing, KS 66043, for disposal of items?

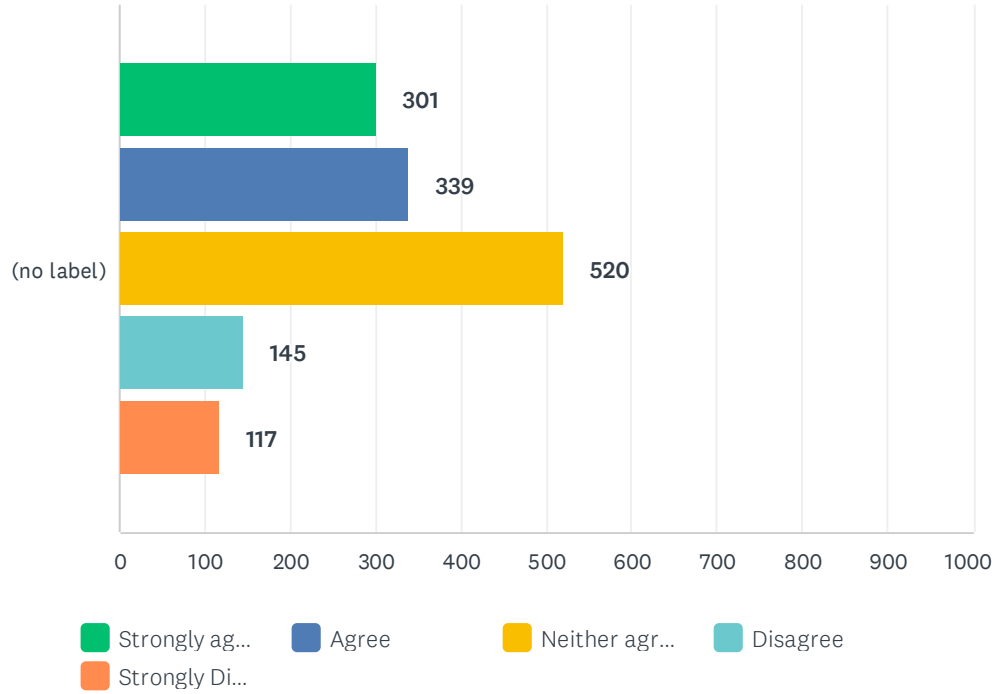
Answered: 1,456 Skipped: 15



ANSWER CHOICES	RESPONSES	
Once a year.	24.24%	353
A few times a year.	34.34%	500
Once a month.	3.91%	57
I have never used the Leavenworth County Transfer Station.	35.37%	515
More than once a month.	2.13%	31
<b>TOTAL</b>		<b>1,456</b>

### Q19 Recycling: Does the Recycling Center behind the Municipal Service Center at Pennsylvania and Lawrence Avenues meet your needs?

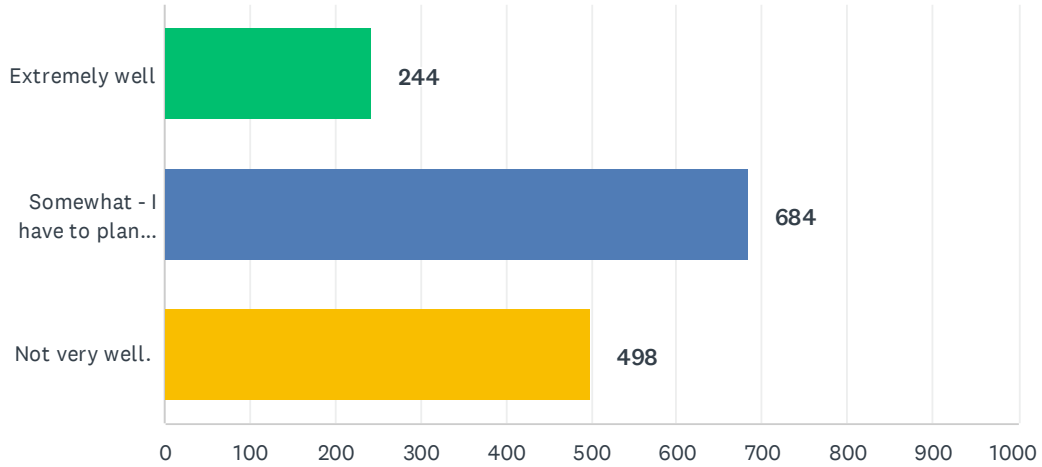
Answered: 1,422 Skipped: 49



	STRONGLY AGREE	AGREE	NEITHER AGREE NOR DISAGREE	DISAGREE	STRONGLY DISAGREE	TOTAL	WEIGHTED AVERAGE
(no label)	21.17% 301	23.84% 339	36.57% 520	10.20% 145	8.23% 117	1,422	2.60

Q20 How well do the hours of the Recycling Center meet your needs? The facility is open 8:30 a.m. - 12:30 p.m. Tuesdays through Saturdays.

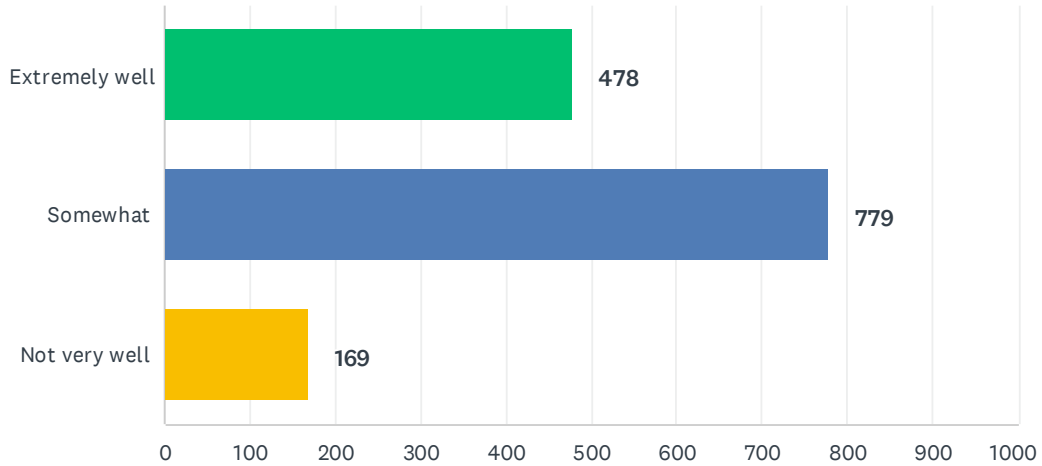
Answered: 1,426 Skipped: 45



ANSWER CHOICES	RESPONSES	
Extremely well	17.11%	244
Somewhat - I have to plan around hours.	47.97%	684
Not very well.	34.92%	498
<b>TOTAL</b>		<b>1,426</b>

Q21 How well do the hours of the Brush Site meet your needs? The site is open March through November - Tuesday, Wednesday, Friday and Saturday - 8 a.m. - 4 p.m. and for two weeks following Christmas in December and January.

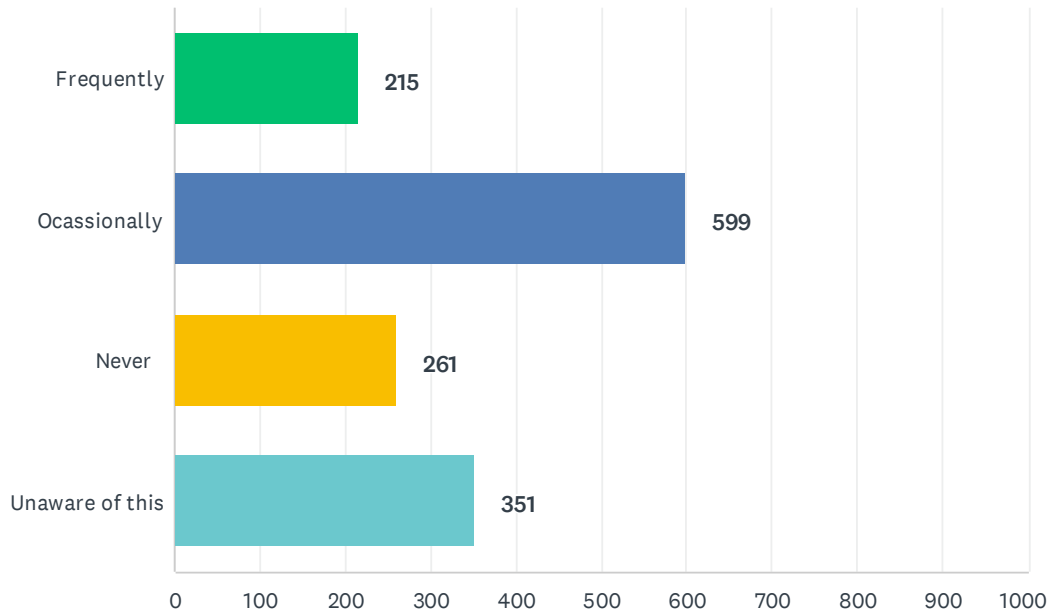
Answered: 1,426 Skipped: 45



ANSWER CHOICES	RESPONSES	
Extremely well	33.52%	478
Somewhat	54.63%	779
Not very well	11.85%	169
TOTAL		1,426

**Q22 Do you participate in the Free First Saturday disposal? (This is a service that allows residents to dispose of large/bulky items and use the brush site free of charge on the first Saturday of each month.)**

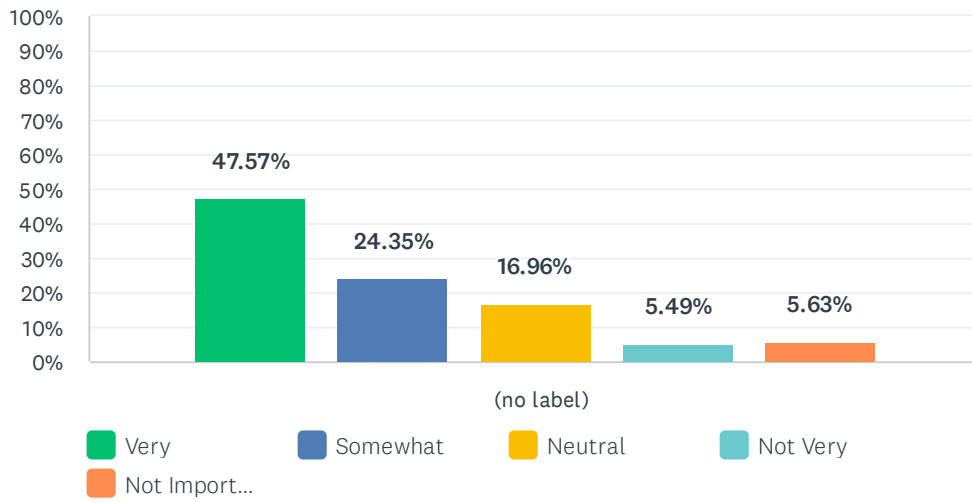
Answered: 1,426 Skipped: 45



ANSWER CHOICES	RESPONSES	
Frequently	15.08%	215
Ocassionally	42.01%	599
Never	18.30%	261
Unaware of this	24.61%	351
<b>TOTAL</b>		<b>1,426</b>

## Q23 Is having the option to recycle important to you?

Answered: 1,421 Skipped: 50

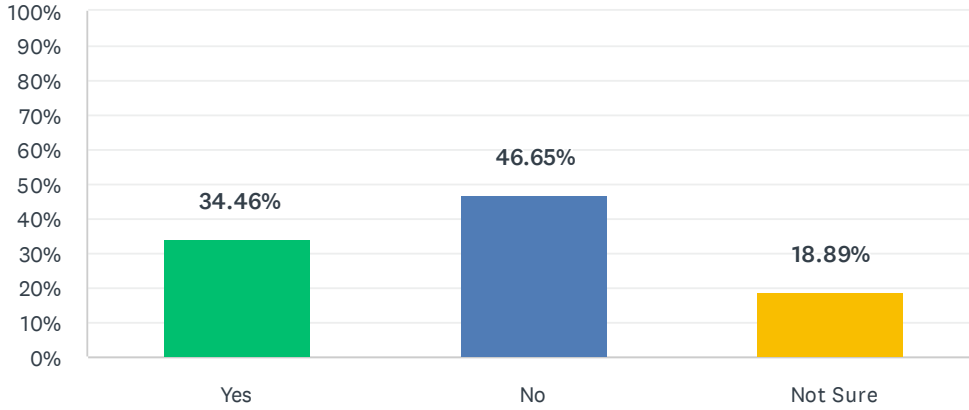


	VERY (1)	SOMEWHAT (2)	NEUTRAL (3)	NOT VERY (4)	NOT IMPORTANT (5)	TOTAL	WEIGHTED AVERAGE
(no label)	47.57% 676	24.35% 346	16.96% 241	5.49% 78	5.63% 80	1,421	1.50

BASIC STATISTICS						
Minimum		Maximum	Median	Mean	Standard Deviation	
1.00		5.00	2.00	1.97	1.17	

## Q24 Would you be willing to pay extra each month for curbside recycling (curbside option would be from a private contractor)?

Answered: 1,419 Skipped: 52



ANSWER CHOICES	RESPONSES	
Yes (1)	34.46%	489
No (2)	46.65%	662
Not Sure (3)	18.89%	268
<b>TOTAL</b>		<b>1,419</b>

BASIC STATISTICS				
Minimum	Maximum	Median	Mean	Standard Deviation
1.00	3.00	2.00	1.84	0.71



## Q25 Do you own property or have a residence in the City of Leavenworth? (You may choose more than one option)

Answered: 1,425 Skipped: 46

ANSWER CHOICES	RESPONSES	
I own residential property and live in the City of Leavenworth.	78.04%	1,112
I own residential property but do not live in the City of Leavenworth.	1.68%	24
I rent in the City of Leavenworth.	19.16%	273
I live outside the City of Leavenworth but within Leavenworth County.	2.04%	29
I live outside of Leavenworth County.	0.28%	4
I manage residential properties in the City of Leavenworth.	2.25%	32
I own a business inside the City of Leavenworth.	3.30%	47
Total Respondents: 1,425		